

CONTRACT DOCUMENTS
AND
SPECIFICATIONS

FOR

AIP 3-22-0006-116-2020

RUNWAY 31 EMAS REMOVAL AND BLAST PAD INSTALLATION

BATON ROUGE METROPOLITAN AIRPORT

ADDENDUM NO. 1

DATE ISSUED: June 24, 2026

BID DATE UNCHANGED: June 30, 2026

SCOPE:

This Addendum shall be part of the Contract Documents as provided in the Instructions to Bidders.

The following items are issued to add, modify, and clarify the Contract Documents and Specifications. These items shall have full force and effect, as the contract Documents and the cost involved shall be included in the bid prices.

Acknowledge receipt of the addendum by its number and date on the Louisiana Uniform Public Work Bid Form. Failure to do so may subject the bidder to disqualification.

Individual document changes consist of the following:

REVISIONS TO PROJECT SPECIFICATIONS:

- Addition of EMAS As-Builts to the Project Manual

REVISIONS TO CONSTRUCTION PLANS:

N/A

ADDITIONAL ITEMS:

- Pre-Bid Meeting Agenda, Meeting Notes and Sign-In Sheet
- Contractor Questions and Consultant Answers



**DIVISION IV
TECHNICAL SPECIFICATIONS**

C-100 Contractor Quality Control Program (CQCP)C-100-1
 C-102 Temporary Air and Water Pollution, Soil Erosion, and Siltation Control.....C-102-1
 C-105 Mobilization.....C-105-1

P-101 Preparation/Removal of Existing PavementsP-101-1
 P-151 Clearing and GrubbingP-151-1
 P-152 Excavation, Subgrade, and Embankment.....P-152-1
 P-155 Lime-Treated Subgrade.....P-155-1
 P-209 Crushed Aggregate Base Course.....P-209-1
 P-401 Asphalt Mix PavementP-401-1
 P-403 Asphalt Pavement MixP-403-1
 P-602 Emulsified Asphalt Prime Coat.....P-602-1
 P-603 Emulsified Asphalt Tack CoatP-603-1
 P-620 Runway and Taxiway MarkingP-620-1

T-904 SoddingT-904-1
 T-905 Topsoil.....T-905-1
 T-908 Mulching.....T-908-1

L-108 Underground Power Cable for AirportsL-108-1
 L-110 Airport Underground Electrical Duct Banks and ConduitsL-110-1
 L-115 Electrical Manholes and Junction StructuresL-115-1
 L-125 Installation of Airport Lighting Systems.....L-125-1

S-1000 Construction Safety and Phasing Plan.....S-1000-1
 S-1001 Hydroseeding.....S-1001-1
 S-1002 Engineered Materials Arresting System (EMAS) RemovalS-1002-1

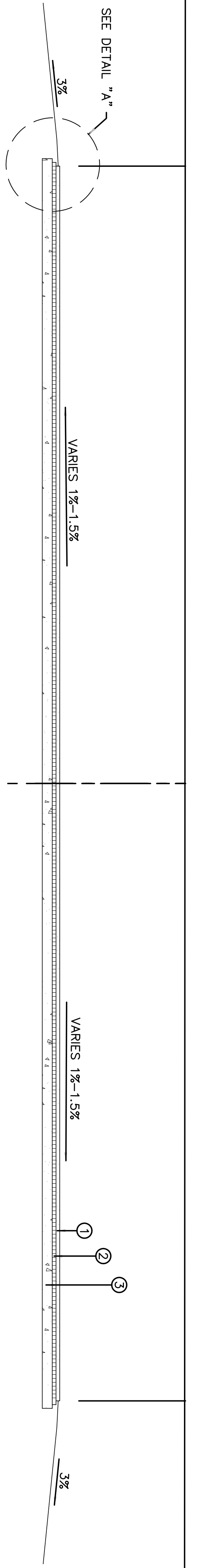
**APPENDIX A – FAA AC 150/5370-2G – Operational Safety on Airports
During Construction**

APPENDIX B – Geotechnical Report

APPENDIX C – EMAS As-Builts

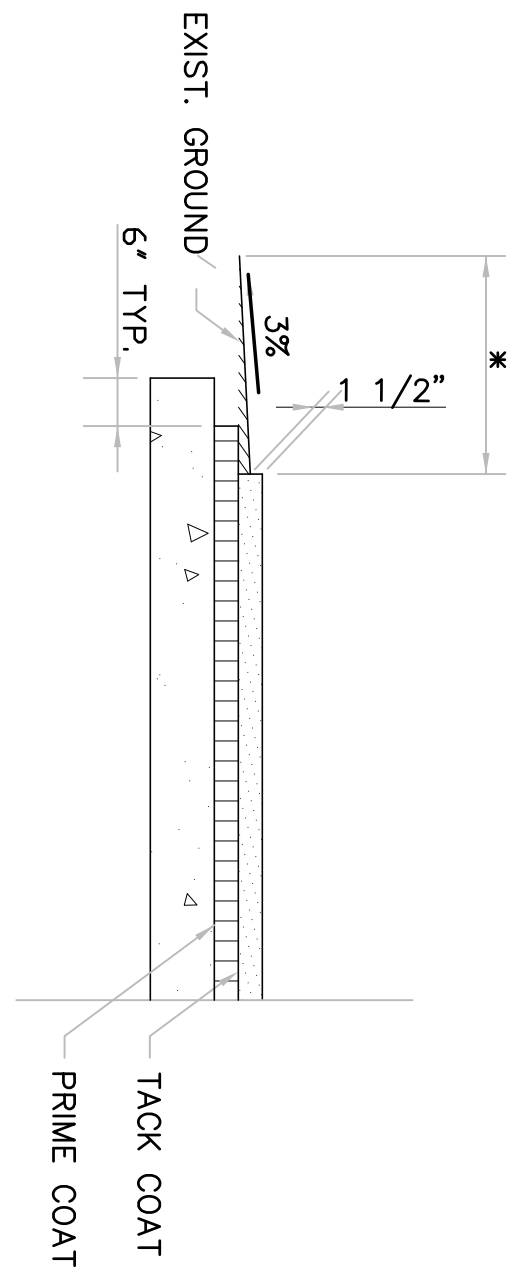
APPENDIX C

EMAS As-Builts

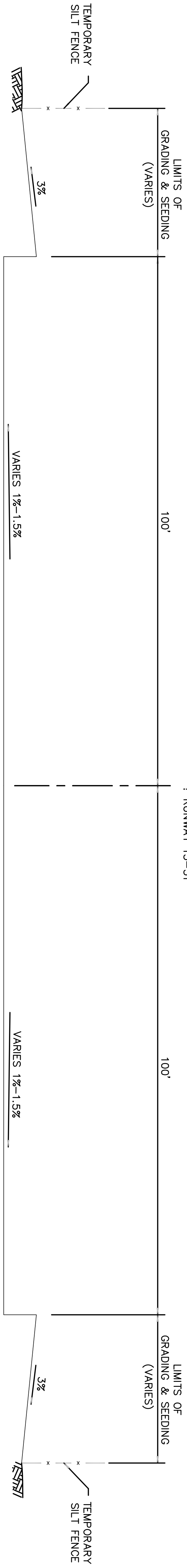


TYPICAL FINISHED SECTION
SCALE: HORIZONTAL 1"=10'
VERTICAL 1"=5'
STA. 10+00.00 TO STA. 13+14.00

- LEGEND
- ① 3" ASPHALT WEARING COURSE
 - ② 3" ASPHALT BINDER COURSE
 - ③ 8" SOIL CEMENT



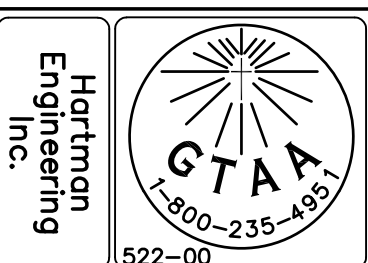
DETAIL "A"



TYPICAL GRADING SECTION
SCALE: HORIZONTAL 1"=10'
VERTICAL 1"=5'
STA. 10+00.00 TO STA. 13+14.00

△ NOTE: SEE SHEET 7 FOR GRAPHICAL GRADES

AS BUILT DRAWINGS



EMAS RUNWAY 13-31

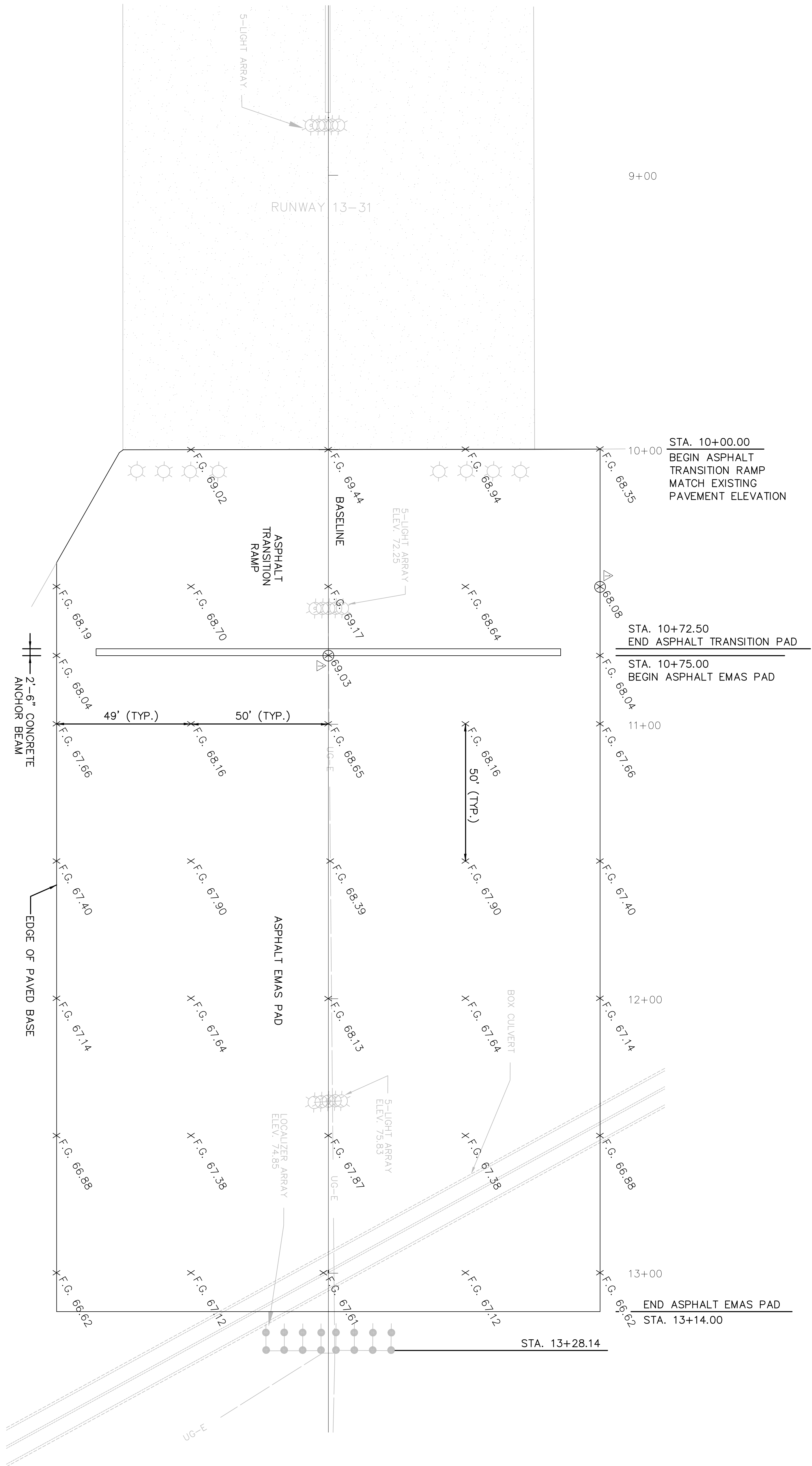
TYPICAL EMAS SECTION



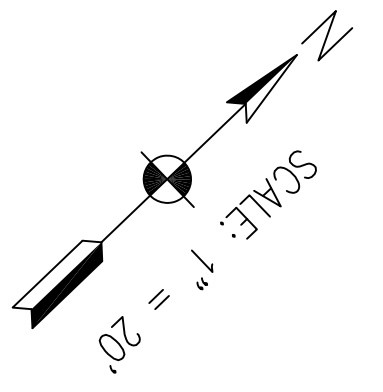
NO.	DATE	REVISION DESCRIPTION	BY
1	02/11/02	ADD GRAPHICAL GRADE NOTE	JRS

DESIGNED CHECKED	SCG WTW	PARISH	EAST BATON ROUGE PARISH	SHEET NUMBER	6
DETAILED CHECKED	BJB MGA	AIP	3-22-0006-52		
DATE SHEET	JULY 2001 10F 1	STATE PROJECT	917-01-0055		

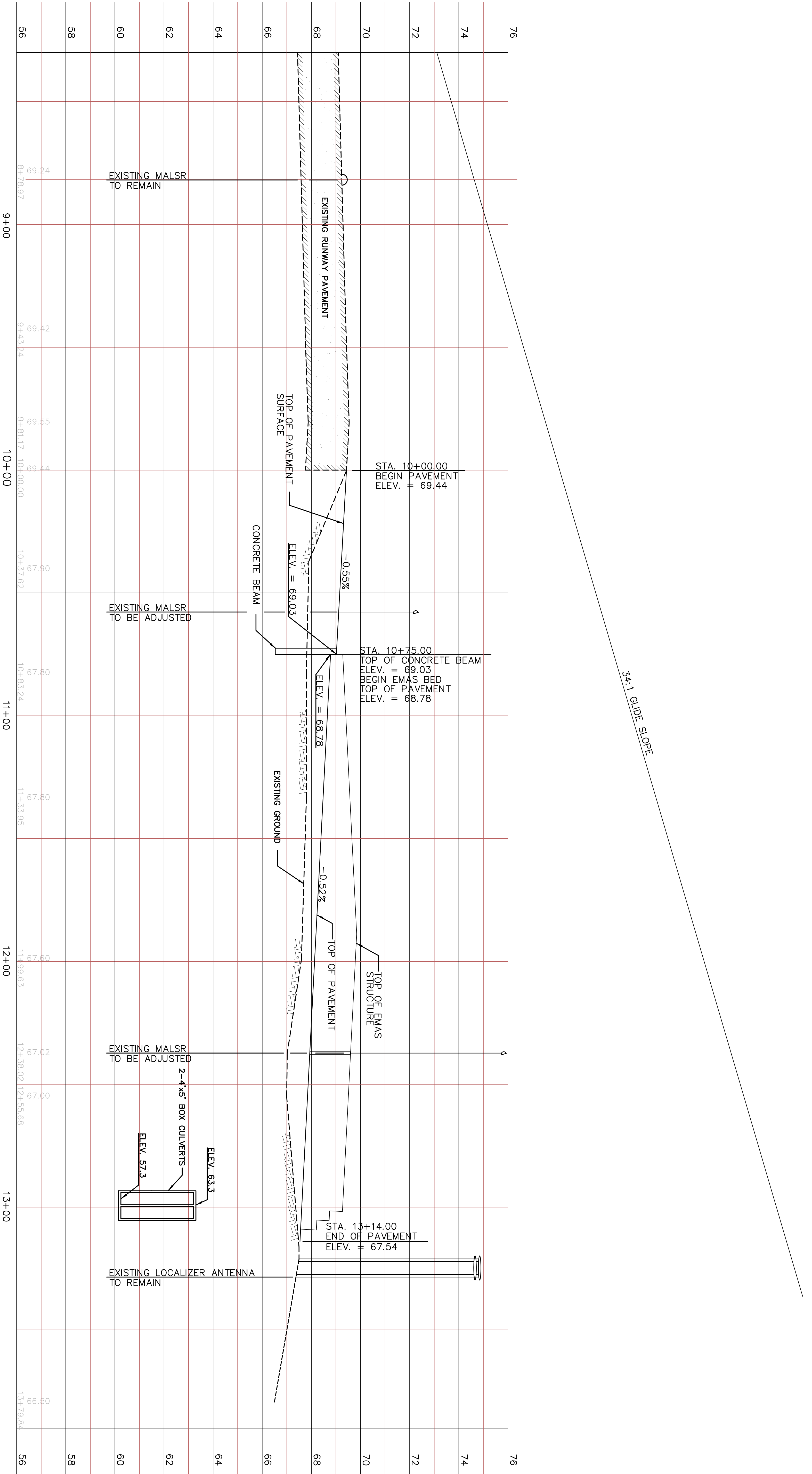
- NOTES:
1. CONTRACTOR SHALL TEMPORARILY RELOCATE THRESHOLD PRIOR TO BEGINNING CONSTRUCTION.
 2. MALSR LIGHT STRUCTURES WILL BE ADJUSTED TO MAINTAIN EXISTING LIGHT ELEVATION.



AS BUILT DRAWINGS



	EMAS RUNWAY 13-31 PLAN VIEW			DESIGNED: JRS CHECKED: DCB	PARISH: EAST BATON ROUGE PARISH	SHEET NUMBER: 7
				DETAILED CHECKED: JDB	AIP PROJECT: 3-22-0006-52	
		DATE: 02/11/02 BY: JRS	REVISION DESCRIPTION: ADD SPOT ELEVATIONS	DATE SHEET: JULY 2001 SHEET: 1 OF 1	STATE PROJECT: 917-01-0055	

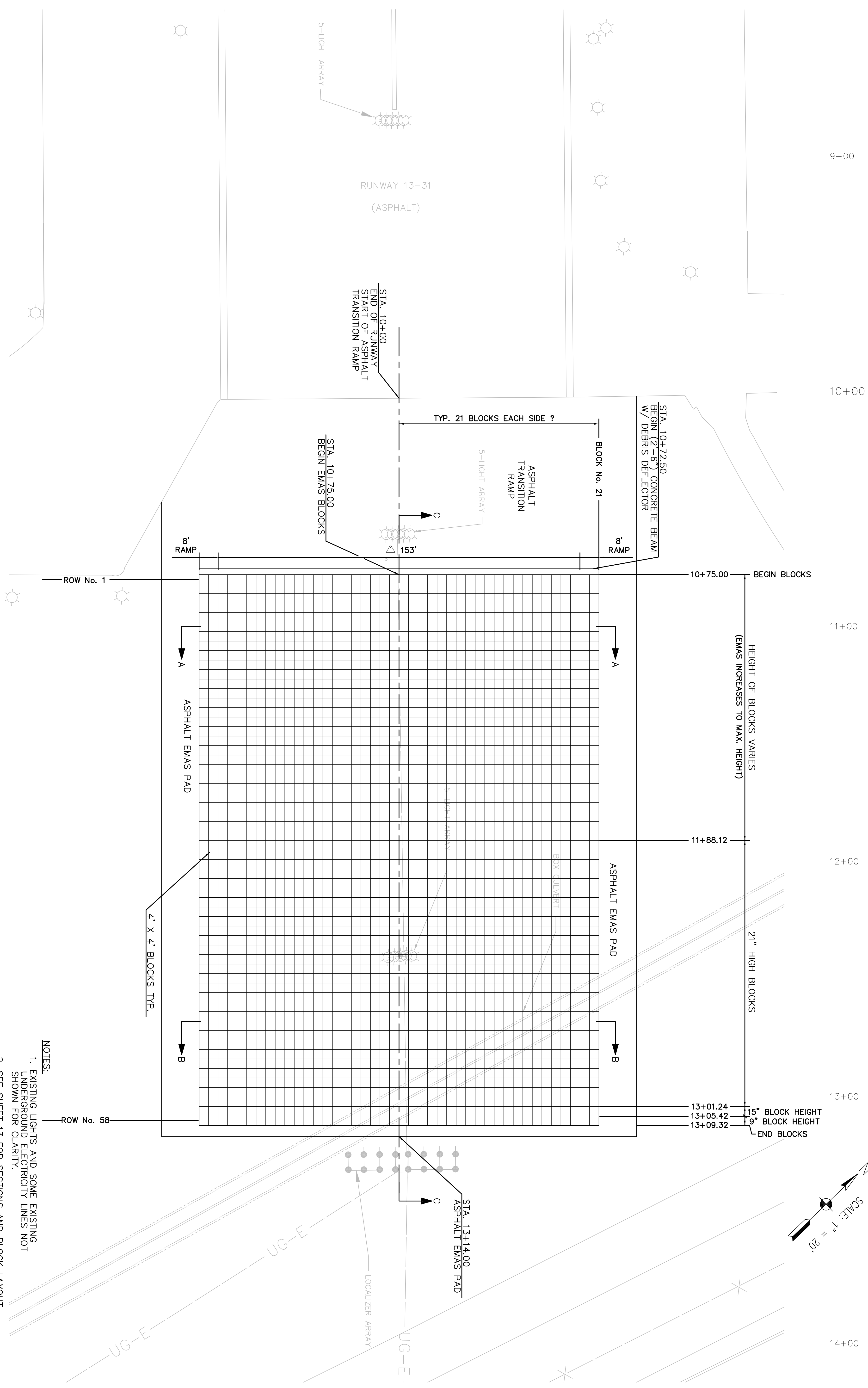


NOTE: MALSR LIGHT STRUCTURES WILL BE ADJUSTED TO MAINTAIN EXISTING LIGHT ELEVATION

SCALE: 1" = 20' HORIZONTAL
1" = 2' VERTICAL

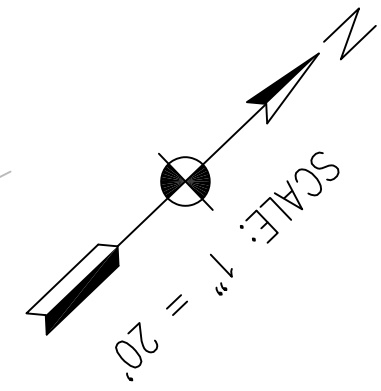
AS BUILT DRAWINGS

<p>EMAS RUNWAY 13-31</p> <p>PROFILE VIEW</p>			<p>DESIGNED</p> <p>JRS</p>	<p>PARISH</p> <p>EAST BATON ROUGE PARISH</p>	<p>SHEET NUMBER</p> <p>8</p>
<p>DCB</p>	<p>DCB</p>		<p>AIP PROJECT</p> <p>3-22-0006-52</p>		
<p>CHECKED</p> <p>-</p>	<p>JULY 2001</p> <p>1 OF 1</p>	<p>STATE PROJECT</p> <p>917-01-0055</p>	<p>DATE SHEET</p>	<p>BY</p>	<p>REVISION DESCRIPTION</p>

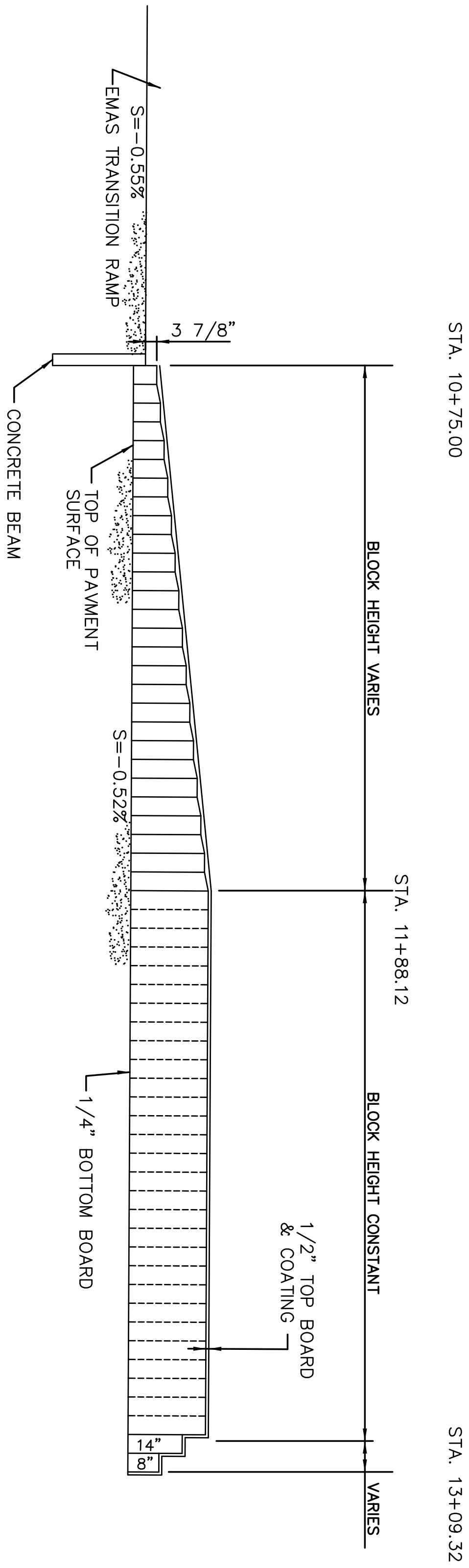


AS BUILT DRAWINGS

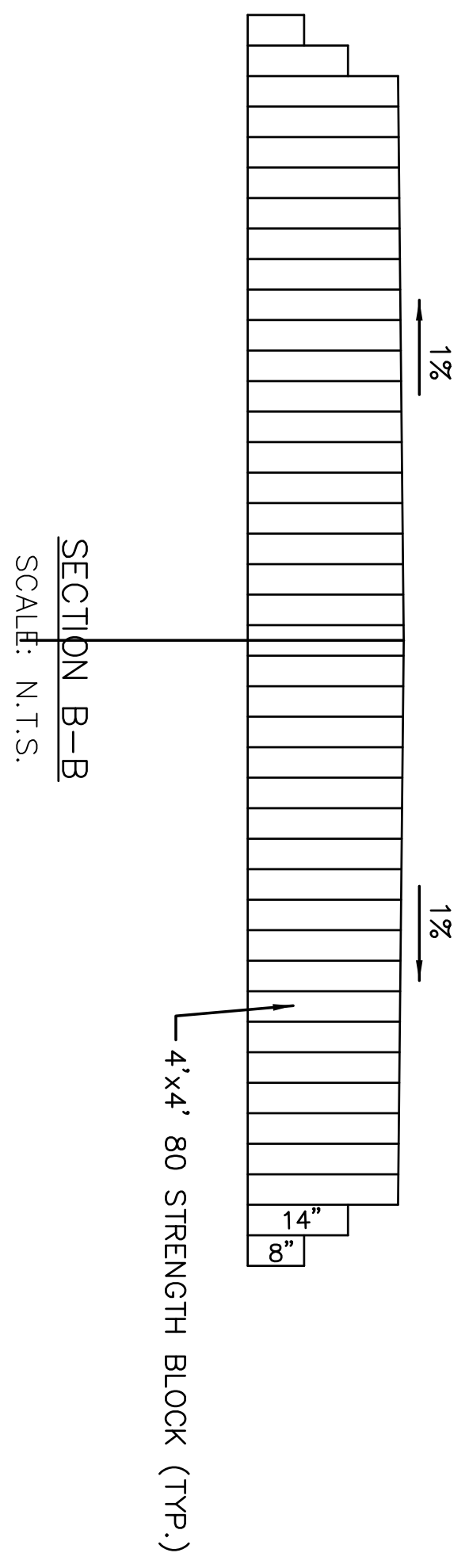
- NOTES:
1. EXISTING LIGHTS AND SOME EXISTING UNDERGROUND ELECTRICITY LINES NOT SHOWN FOR CLARITY.
 2. SEE SHEET 13 FOR SECTIONS AND BLOCK LAYOUT CHART.
 3. ALL BLOCK INSTALLATION SHALL BE DONE IN ACCORDANCE WITH EMAS BLOCK MANUFACTURERS' RECOMMENDATION.
 4. EMAS BLOCK WIDTH DIMENSIONS ARE NOMINAL. ACTUAL DIMENSIONS SHALL FOLLOW BLOCK LAYOUT SUPPLIED BY MANUFACTURER.



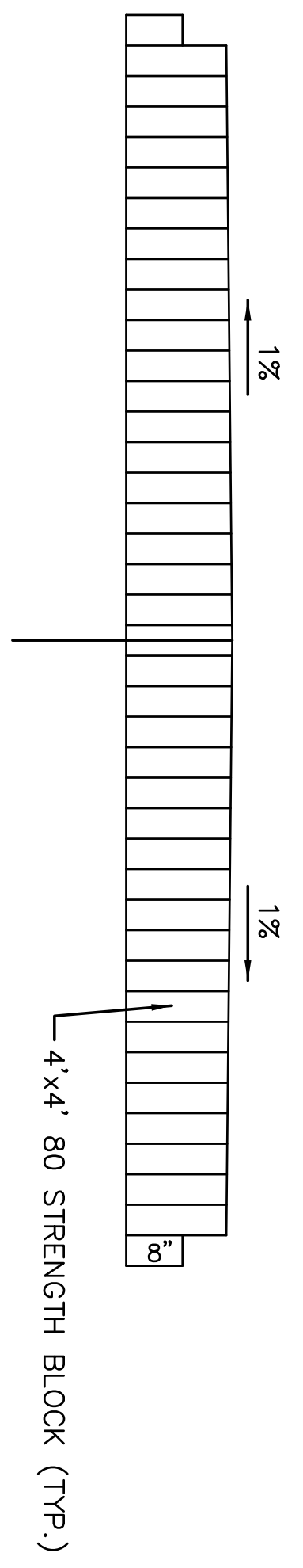
<p>EMAS RUNWAY 13-31</p> <p>EMAS DETAILS (BLOCK LAYOUT) SHEET</p>			<p>02/21/02</p> <p>DATE</p>	<p>REVISED BLOCK WIDTH LAYOUT</p> <p>REVISION DESCRIPTION</p>	<p>JRS</p> <p>BY</p>	<p>DESIGNED</p> <p>CHECKED</p> <p>JRS</p> <p>DCB</p>	<p>PARISH</p> <p>EAST BATON ROUGE PARISH</p>	<p>AIP PROJECT</p> <p>3-22-0006-52</p>	<p>STATE PROJECT</p> <p>917-01-0055</p>	<p>SHEET NUMBER</p> <p>12</p>
---	--	--	-----------------------------	---	----------------------	--	--	--	---	-------------------------------



SECTION C-C
SCALE: N.T.S.



SECTION B-B
SCALE: N.T.S.



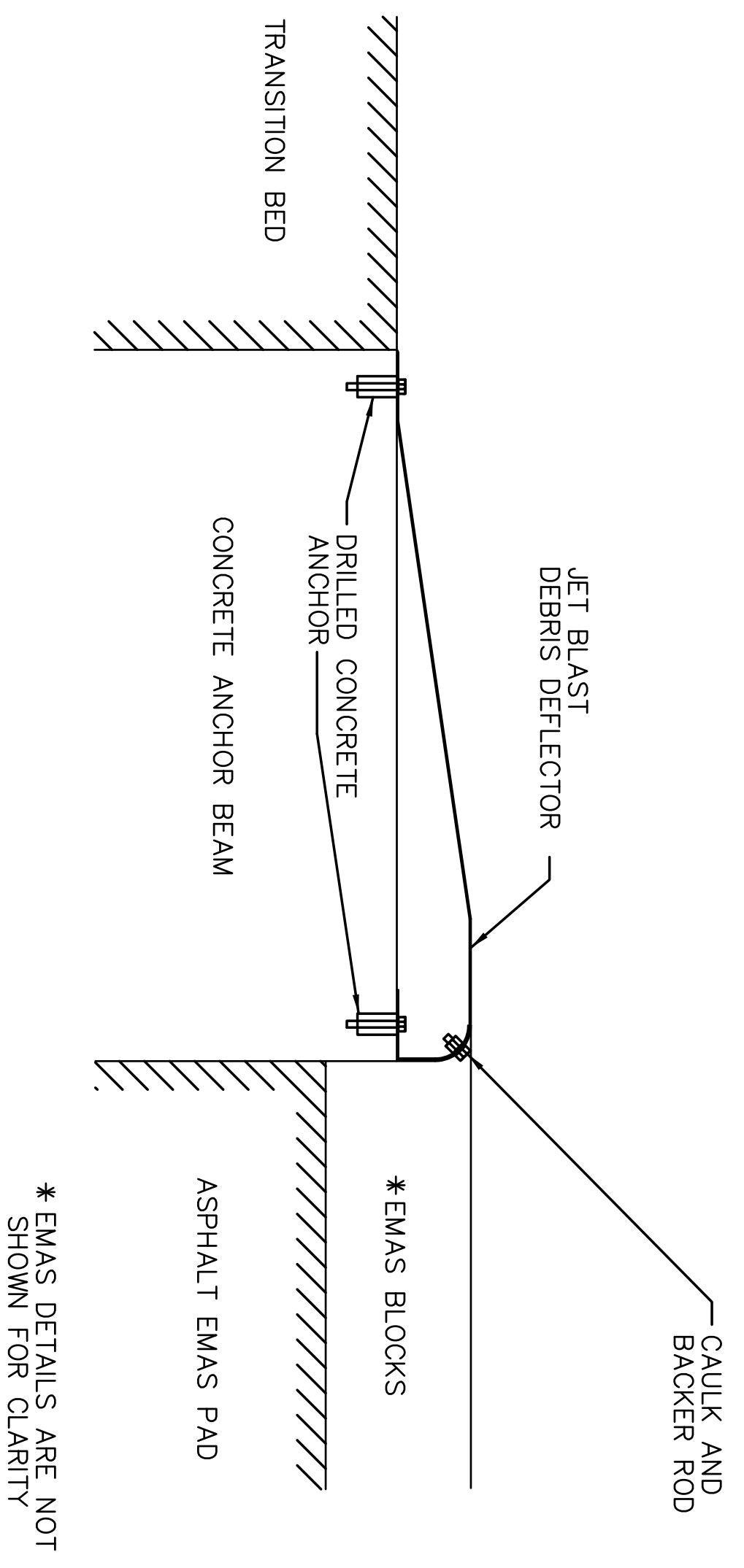
SECTION A-A
SCALE: N.T.S.

AS BUILT DRAWINGS

	DESIGNED	JRS	PARISH	EAST BATON ROUGE PARISH	SHEET NUMBER 13
	CHECKED	DCB	AIP PROJECT	3-22-0006-52	
	DATE	JULY 2001	STATE PROJECT	917-01-0055	
	NO.	3 OF 3			
	DATE	02/11/02			
	REVISION	REMOVE BLOCK LAYOUT CHART			
	DESCRIPTION				

EMAS RUNWAY 13-31
EMAS DETAILS (PROFILE) SHEET

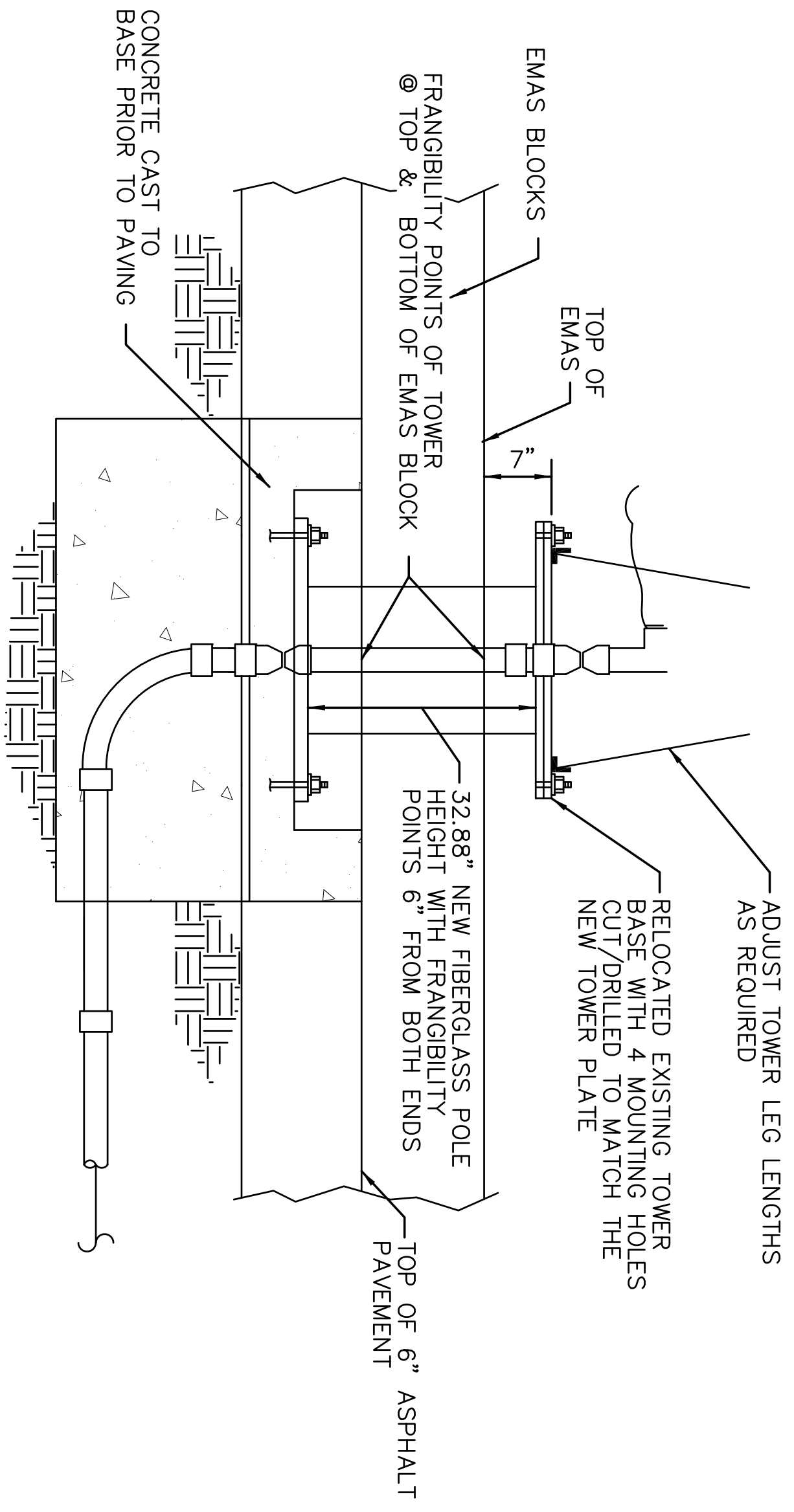
Hortman Engineering Inc.



EMAS JET BLAST DEBRIS DEFLECTOR

SCALE: N.T.S.

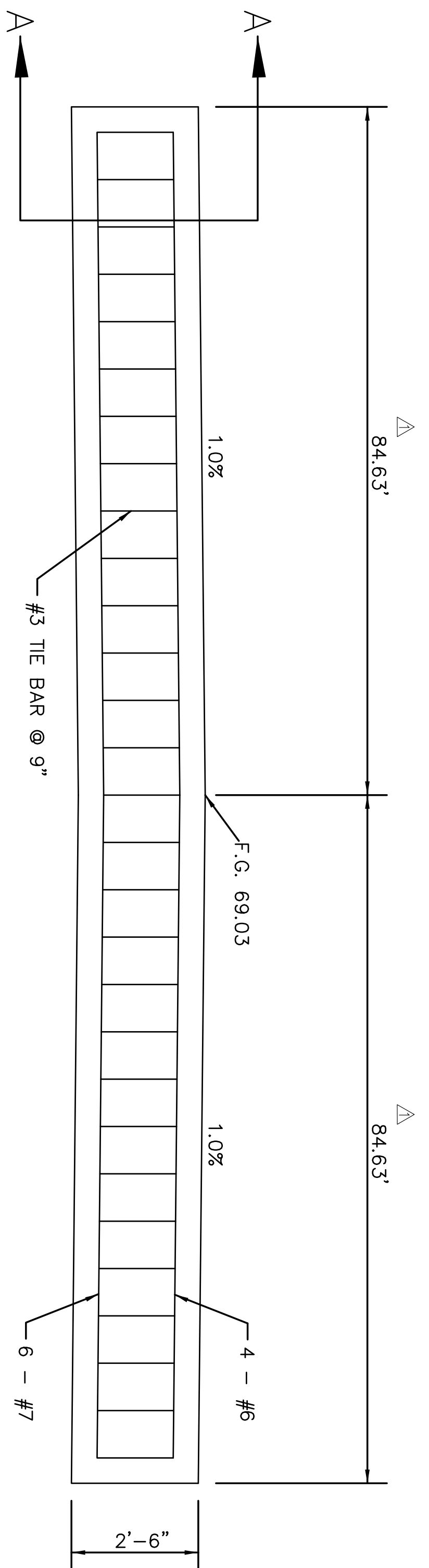
NOTE:
BLAST DEFLECTOR AND MOUNTING BOLTS TO BE SUPPLIED
AND INSTALLED BY EMAS MANUFACTURER



ELEVATION VIEW - MALS AT STA. 12+40

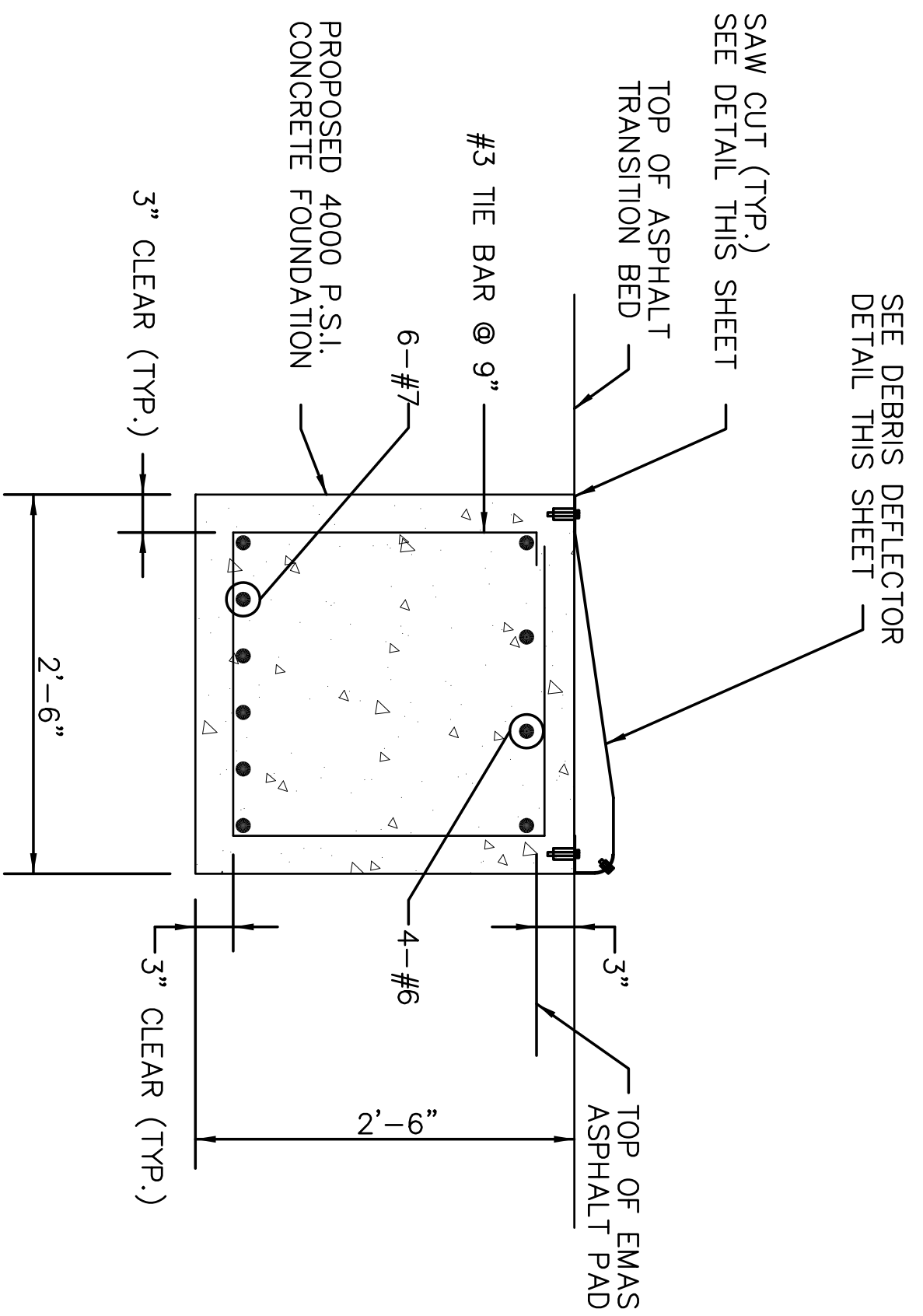
SCALE: N.T.S.

- NOTES:
1. SEE ELECTRICAL SHEETS FOR CONDUIT AND WIRE SIZE.
 2. FIBERGLASS POLE FROM CK COMPOSITES WITH FRANGIBILITY POINTS AT LOCATIONS SHOWN.
 3. ALL DIMENSIONS SHOWN ARE APPROXIMATE AND SHALL BE VERIFIED BY CONTRACTOR PRIOR TO FABRICATION.



CONCRETE BEAM DETAIL

SCALE: N.T.S.



ALL BARS SHALL BE ASTM-A615, GRADE 60 (TYP.)

SECTION A-A

SCALE: N.T.S.

AS BUILT DRAWINGS

	DESIGNED	JRS	PARISH	EAST BATON ROUGE PARISH	SHEET NUMBER	14
	CHECKED	DCB	AIP PROJECT	3-22-0006-52		
	DATE SHEET	APR. 2001 3 OF 3	STATE PROJECT	917-01-0055		
NO.	02/11/02	REVISION DESCRIPTION	REVISE CONCRETE BEAM LENGTH		DATE	JRS
EMAS RUNWAY 13-31 EMAS DETAILS SHEET						

Hortman Engineering Inc.

PRE-BID CONFERENCE AGENDA

EMAS Removal and Blast Pad Installation

10:00 AM Wednesday, June 17, 2026

Meeting Location: Airport Terminal Conference Room – First Floor

Project Location: Baton Rouge Metropolitan Airport

AIP No.: 3-22-0006-116-2020

SPONSOR: Greater Baton Rouge Airport District

SPONSOR REPRESENTATIVE: Alan Krouse, Program Manager, AMG
Phone: 225-358-4240

PROJECT ENGINEER: Blake Roussel, Stanley Consultants, Inc.
Phone: (225) 936-1604

Brady Richard, Stanley Consultants, Inc.
Phone: (225) 388-4232

INTRODUCTIONS:

1. **Baton Rouge Metropolitan Airport (Owner)**
 - a. Mike Edwards, Director of Aviation
 - b. Louis Hubbard, Assistant Director of Aviation
 - c. Chief Robert Stikes, Airport Police/ARFF
 - d. Jerry Webber, Construction Superintendent
 - e. Craig Alford, Airport Operations
2. **Program Managers (Owner's Representatives): AMG**
 - a. Alan Krouse, Program Manager
 - b. Tim Murray, Construction Project Manager
3. **Project Engineers: Stanley Consultants, Inc.**
 - a. Brady Richard, Project Engineer
 - b. Blake Roussel, Project Engineer
4. **Inspection/Testing Services: TBD**
 - a. Project Inspector TBD
 - b. Quality Assurance Laboratory, TBD
5. **DBE Instructions – No DBE Goal**
6. **Security Badging and Access – AMG – Tim Murray**
7. **Contractors**

8. **Others**

GENERAL CONTRACT REQUIREMENTS:

1. **General Type of Work** – This contract includes the demolition and removal of debris of the Runway 31 Engineered Material Arresting System (EMAS) and the construction of an asphalt blast pad in its place. Work types include EMAS demolition and removal, asphalt pavement demolition and removal, earthwork, and pavement markings. Electrical work include the removal and reinstallation of eight runway end lights, the installation of conduit, base cans, and covers for 18 MALS threshold lights, and the removal and re-installation of 2 MALS Light Bar Fixtures back into their current locations. A new MALS lighting system is not part of this scope of work and is to be completed by others under separate contract at a later date.

2. **Contract Provisions**

- a. Plans and Specifications are available online at www.centralbidding.com:
- b. Links to the plans and specs can also be provided for download via an email request to both Project Engineers from Stanley Consultants.

Brady Richard, Stanley Consultants, Inc.

RichardBrady@stanleygroup.com

Phone: (225) 388-4232

Blake Roussel, Stanley Consultants, Inc.

RousselBlake@stanleygroup.com

Phone: (225) 936-1604

- c. Bid Opening
Time & Date: 2:00 pm, Tuesday, June 30, 2026
Location: City/Parish Purchasing Office, Room 826, City Hall
- d. Addendums - Addendum 1 will be issued in the days following the Pre-Bid Meeting.
 1. Items covered
 - Pre-bid meeting minutes

3. **Project Detail:**

- Overall Project Scope includes the demolition and removal of debris of the Runway 31 Engineered Material Arresting System (EMAS), its underlying asphalt pavement and the construction of an asphalt blast pad in its place.
- This project is a small piece of the larger Runway 13-31 RSA Improvements project that will be completed under a future contract along with the realignment of Plank Road. The realignment of Plank will provide the space needed to establish a proper runway safety area. The EMAS removal portion of the project needed to be accelerated due to its failing condition. It is crumbling and represents a FOD hazard.
- Contract Time – 153 calendar days
- Construction Safety and Phasing Plan
 - No workers can enter any safety areas of active runways or taxiways.
 - Access locations, haul routes and laydown areas are as shown in the plans.
 - a. Plank Rd -> Blanche Noyes Rd -> Access Gate

- Runway 13-31 to be Closed.
- The timing of the project NTP date and resulting runway closure will need to be closely coordinated with BTR with consideration given to other projects and closures ongoing in the area.

Questions

- a. Please submit all questions in written email format to the Project Engineers as listed above by tomorrow, Thursday, June 18, 2026 at 5:00pm. They will be reviewed and responded to in an addendum, if applicable.

Pre-Bid Conference Adjourned

PRE-BID CONFERENCE MINUTES

EMAS Removal and Blast Pad Installation

10:00 AM Wednesday, June 17, 2026

Meeting Location: Airport Terminal Conference Room – First Floor

Project Location: Baton Rouge Metropolitan Airport

AIP No.: 3-22-0006-116-2020

SPONSOR: Greater Baton Rouge Airport District

SPONSOR REPRESENTATIVE: Alan Krouse, Program Manager, AMG
Phone: 225-358-4240

PROJECT ENGINEER: Blake Roussel, Stanley Consultants, Inc.
Phone: (225) 936-1604

Brady Richard, Stanley Consultants, Inc.
Phone: (225) 388-4232

INTRODUCTIONS:

1. **Baton Rouge Metropolitan Airport (Owner)**
 - a. Mike Edwards, Director of Aviation
 - b. Louis Hubbard, Assistant Director of Aviation
 - c. Chief Robert Stikes, Airport Police/ARFF
 - d. Jerry Webber, Construction Superintendent
 - e. Craig Alford, Airport Operations
2. **Program Managers (Owner's Representatives): AMG**
 - a. Alan Krouse, Program Manager
 - b. Tim Murray, Construction Project Manager
3. **Project Engineers: Stanley Consultants, Inc.**
 - a. Brady Richard, Project Engineer
 - b. Blake Roussel, Project Engineer
4. **Inspection/Testing Services: TBD**
 - a. Project Inspector ~~TBD~~, Wayne Calcote
 - b. Quality Assurance Laboratory, TBD
5. **DBE Instructions – No DBE Goal**
6. **Security Badging and Access – AMG – Tim Murray**
 - a. All security and badging requirements should be coordinated with Lindsie Seymore with BTR Police/ARFF.

b. Specific badging requirements will be coordinated between BTR Airport Ops and BTR Police/ARFF upon contract award.

7. **Contractors**

8. **Others**

GENERAL CONTRACT REQUIREMENTS:

1. **General Type of Work** – This contract includes the demolition and removal of debris of the Runway 31 Engineered Material Arresting System (EMAS) and the construction of an asphalt blast pad in its place. Work types include EMAS demolition and removal, asphalt pavement demolition and removal, earthwork, and pavement markings. Electrical work include the removal and reinstallation of eight runway end lights, the installation of conduit, base cans, and covers for 18 MALS threshold lights, and the removal and re-installation of 2 MALS Light Bar Fixtures back into their current locations. A new MALS lighting system is not part of this scope of work and is to be completed by others under separate contract at a later date.

2. **Contract Provisions**

a. Plans and Specifications are available online at www.centralbidding.com:

b. Links to the plans and specs can also be provided for download via an email request to both Project Engineers from Stanley Consultants.

Brady Richard, Stanley Consultants, Inc.

RichardBrady@stanleygroup.com

Phone: (225) 388-4232

Blake Roussel, Stanley Consultants, Inc.

RousselBlake@stanleygroup.com

Phone: (225) 936-1604

c. Bid Opening

Time & Date: 2:00 pm, Tuesday, June 30, 2026

Location: City/Parish Purchasing Office, Room 826, City Hall

d. Addendums - Addendum 1 will be issued in the days following the Pre-Bid Meeting.

1. Items covered

- Pre-bid meeting minutes

3. **Project Detail:**

- Overall Project Scope includes the demolition and removal of debris of the Runway 31 Engineered Material Arresting System (EMAS), its underlying asphalt pavement and the construction of an asphalt blast pad in its place.
- This project is a small piece of the larger Runway 13-31 RSA Improvements project that will be completed under a future contract along with the realignment of Plank Road. The realignment of Plank will provide the space needed to establish a proper runway safety area. The EMAS removal portion of the project needed to be accelerated due to its failing condition. It is crumbling and represents a FOD hazard.
- Contract Time – 153 calendar days

- Construction Safety and Phasing Plan
 - No workers can enter any safety areas of active runways or taxiways.
 - Access locations, haul routes and laydown areas are as shown in the plans.
 - a. Plank Rd -> Blanche Noyes Rd -> Access Gate
 - Runway 13-31 to be Closed.
 - The timing of the project NTP date and resulting runway closure will need to be closely coordinated with BTR with consideration given to other projects and closures ongoing in the area.

Questions

- a. Please submit all questions in written email format to the Project Engineers as listed above by tomorrow, Thursday, June 18, 2026 at 5:00pm. They will be reviewed and responded to in an addendum, if applicable.

Discussion

- a. Engineer's Estimate is included in the bid documents and is shown as \$1,488,038.51
- b. Contractors should note the Existing Concrete Beam in the EMAS that is to be removed as part of the demolition as shown on Plan Sheet CD101.
- c. All work on FAA infrastructure will require coordination with the FAA, the presence of an FAA Inspector to oversee the required work, and hydrovac to expose FAA cables.
- d. NTP is estimated towards the end of September or beginning of October (See Item 3, Project Detail, bullet 4 for agenda item on NTP).

Pre-Bid Conference Adjourned

Contractor Questions and Consultant Answers:

Q: Per the prebid you discussed having to applying for badging. Will there be a cost to that, that contractors needs to account for in their bid?

A: There will be no direct pay for badging in the project. Please contact Lindsie Seymour with BTR Police/ARFF for specific badging requirements.

Q: Can you confirm that pumped river sand is acceptable as P-152 material?

A: The proposed material shall be able to meet the proof roll and compaction requirements listed in P-152. Refer to the Geotechnical Report in the Project Manual for information about existing soils.