



JEFFERSON PARISH

DEPARTMENT OF PURCHASING



CYNTHIA LEE SHENG
PARISH PRESIDENT

RENNY SIMNO
DIRECTOR

May 5, 2026

ADDENDUM #1

Bid Number: 50-00149809

Bid Opening Date: May 14, 2026

Provide Labor, Materials, and Equipment Necessary for the Removal and Installation of Traffic Signals Equipment at Various Locations for the Jefferson Parish Department of Engineering

Addition:

Drawings were added per department.

*****PLEASE ACKNOWLEDGE ADDENDUM #1 ON BID FORM*****

Sincerely,

Stacey Champagne, Purchasing Specialist II
Jefferson Parish Purchasing Department

Bidders must acknowledge all addenda on the bid form. Bidder acknowledges receipt of this addendum on the bid form by indicating the addendum number listed above. Failure to list each addenda number on the bid form will result in bid rejection.

This addendum is a part of the contract documents and modifies the original bidding documents and specifications. The contents of this addendum shall be included in the contract documents. Changes made by this addendum shall take precedence over the documents of earlier date.

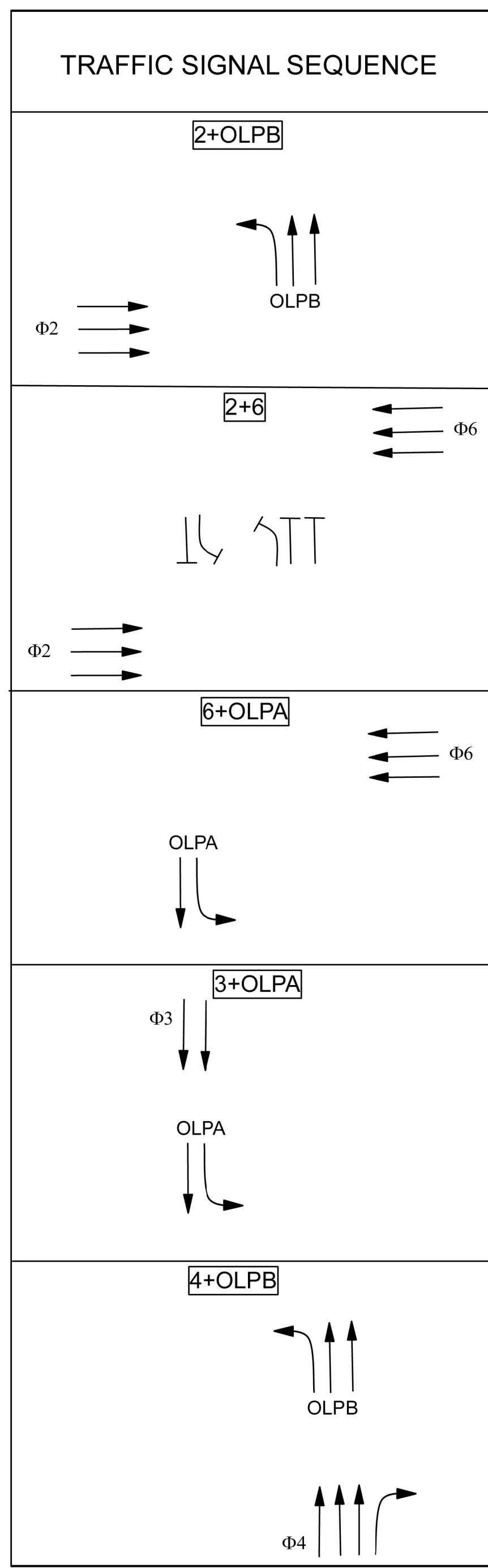
ADDENDUM #1 - ADDITION

SUMMARY OF ESTIMATED QUANTITIES

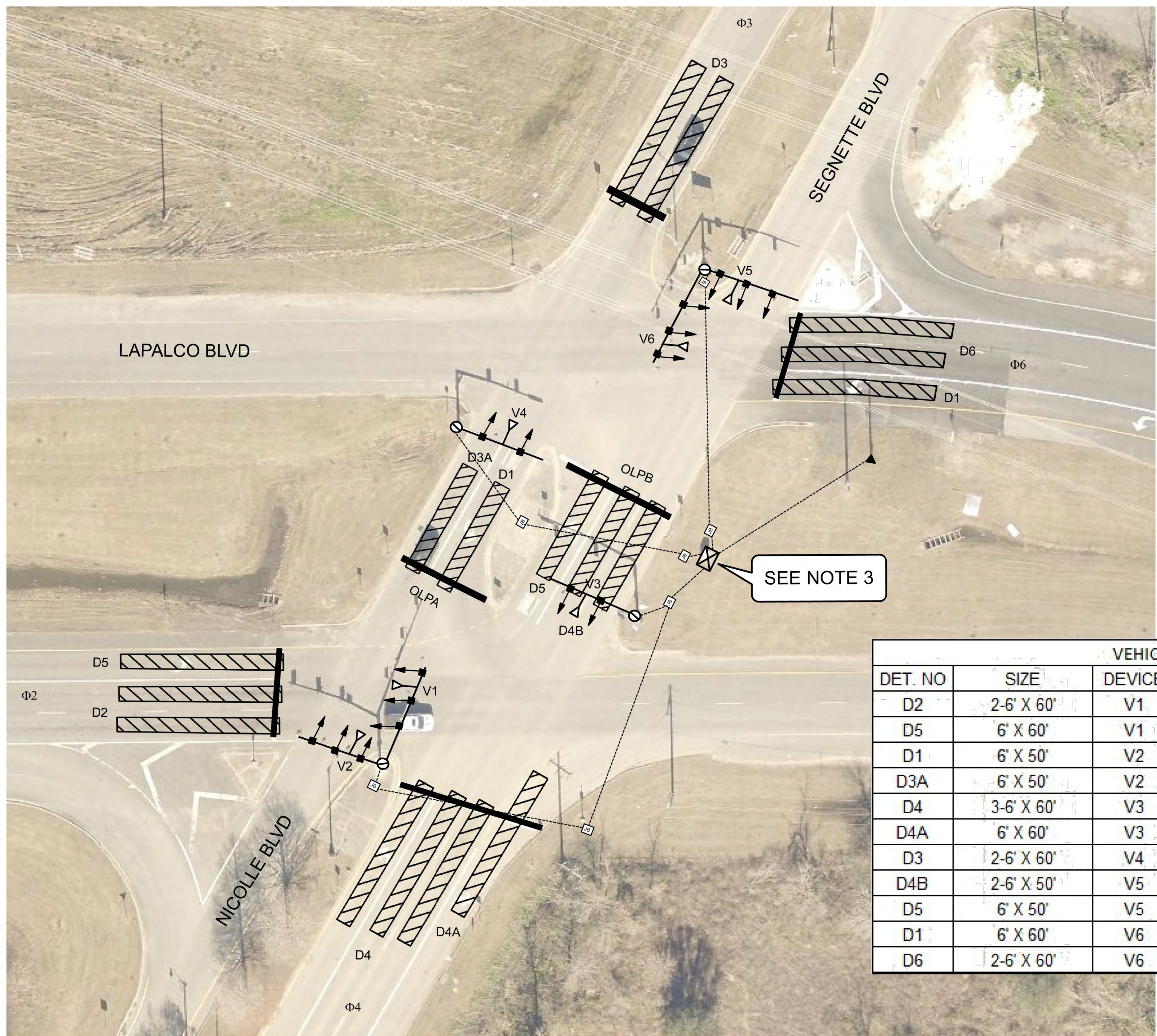
DESCRIPTION	UNIT	SEGNETTE BLVD	WESTWOOD DR	BETTY BLVD	AMES BLVD	SUPERMARKET W	SUPERMARKET E	PROMENADE BLVD	PARLANGE DR	SAULET PL	PAXTON ST	WOODMERE BLVD	BARKLEY DR	ALEX KORNMAN BLVD	VULCAN ST	BROOKLYN AVE	APOLLO AVE	MARLENE DR	WALL BLVD	TOTAL	
		LAPALCO BLVD	LAPALCO BLVD	LAPALCO BLVD	LAPALCO BLVD	LAPALCO BLVD	LAPALCO BLVD	LAPALCO BLVD	LAPALCO BLVD	LAPALCO BLVD	LAPALCO BLVD	LAPALCO BLVD	LAPALCO BLVD	LAPALCO BLVD	LAPALCO BLVD	LAPALCO BLVD	LAPALCO BLVD	LAPALCO BLVD	LAPALCO BLVD	LAPALCO BLVD	QUANTITIES
MOBILIZATION	LS																				1
TEMPORARY SIGNS AND BARRICADES	LS																				1
REMOVAL OF EXISTING TRAFFIC SIGNAL EQUIPMENT	LS																				1
ATMS SYSTEM LICENSES AND SERVICE CONTRACT EXTENSION	LS																				1
VIDEO DETECTION SYSTEM	EACH	1	1	1	1	1	1	1	1	1	1	1	1	1	1	1	1	1	1	1	18
TRAFFIC SIGNAL CONTROLLER	EACH	1	1	1	1	1	1	1	1	1	1	1	1	1	1	1	1	1	1	1	18
CONTROL CABINET AND RELATED EQUIPMENT	EACH	1	1	1	1	1	1	1	1	1	1	1	1	1	1	1	1	1	1	1	18
CONTROL CABINET FOUNDATION	EACH	1	1	1	1	1	1	1	1	1	1	0	0	0	1	1	1	1	1	1	16
BATTERY BACK UP SYSTEM	EACH	0	0	0	0	0	0	0	0	0	0	1	0	0	0	0	0	0	0	1	3
GPS PREEMPTION AND COMMUNICATIONS	EACH	1	1	1	1	1	1	1	1	1	1	1	1	1	1	1	1	1	1	1	18
1" PVC CONDUIT	LF	2	3	3	3	3	3	0	0	0	0	0	0	0	0	3	0	0	0	0	20
2" PVC CONDUIT	LF	0	3	0	3	0	0	3	3	0	0	0	0	0	0	0	3	0	5	0	20
3" PVC CONDUIT	LF	8	8	0	0	5	5	3	0	0	0	0	0	0	0	0	0	0	0	0	29
4" PVC CONDUIT	LF	0	0	5	5	0	0	5	5	5	5	5	0	0	5	5	5	5	5	5	60

SHEET NUMBER	2	JEFFERSON PARISH	2025 - 014 - TR	N/A
PARISH		PW #		STATE PROJECT
DESIGN CHECK		DETAIL CHECK		REVIEW SERIES #
<div style="display: flex; justify-content: space-between;"> <div style="width: 45%;"> <p style="text-align: center;">LAPALCO BLVD. TRAFFIC SIGNAL UPGRADE</p> <p style="text-align: center;">SUMMARY OF ESTIMATED QUANTITIES</p> </div> <div style="width: 50%; text-align: right;"> <p>NO. _____ DATE _____</p> <p>BY _____</p> <p>REVISION OR CHANGE ORDER DESCRIPTION _____</p> </div> </div>				





*ALL RED CONFLICT FLASH



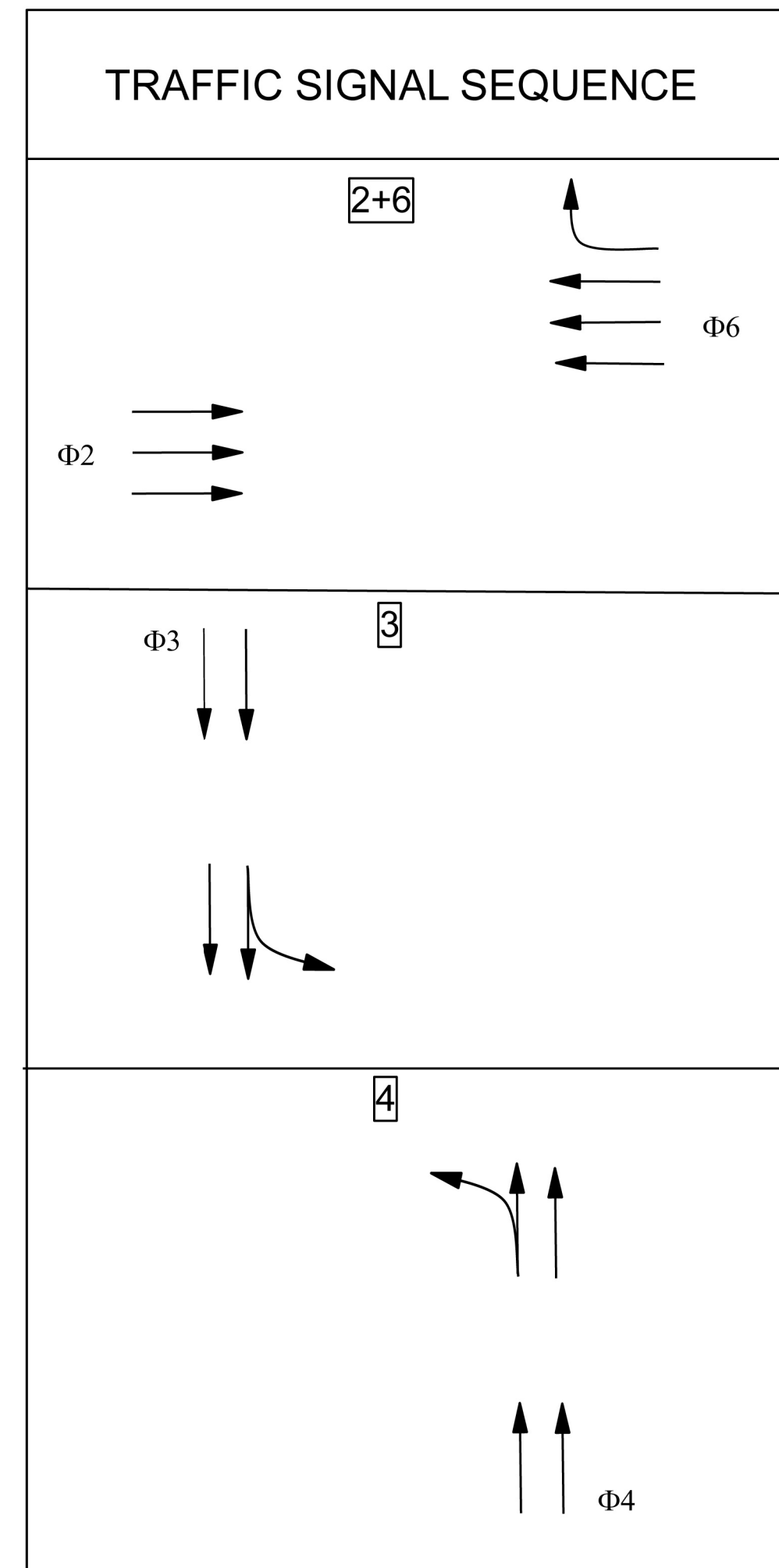
LEGEND

EXISTING	PROPOSED	DESCRIPTION
		CONTROL CABINET
		MAST ARM WITH SIGNAL
		24" STOP BAR MARKING
		VIDEO DETECTION ZONE AND NUMBER
		VIDEO DETECTION CAMERA AND NUMBER
		JUNCTION BOX
		CONDUIT
		ELECTRICAL SERVICE

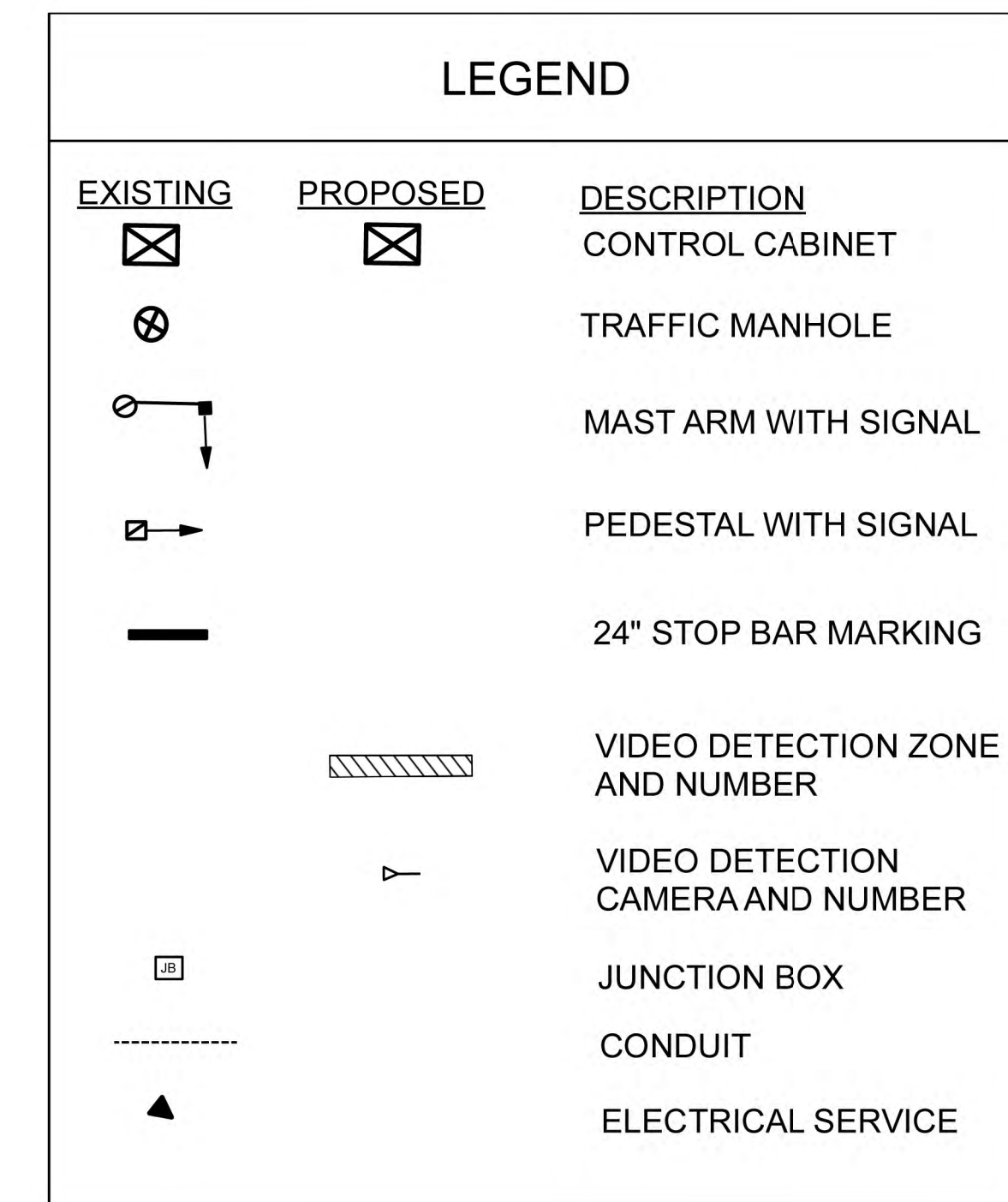
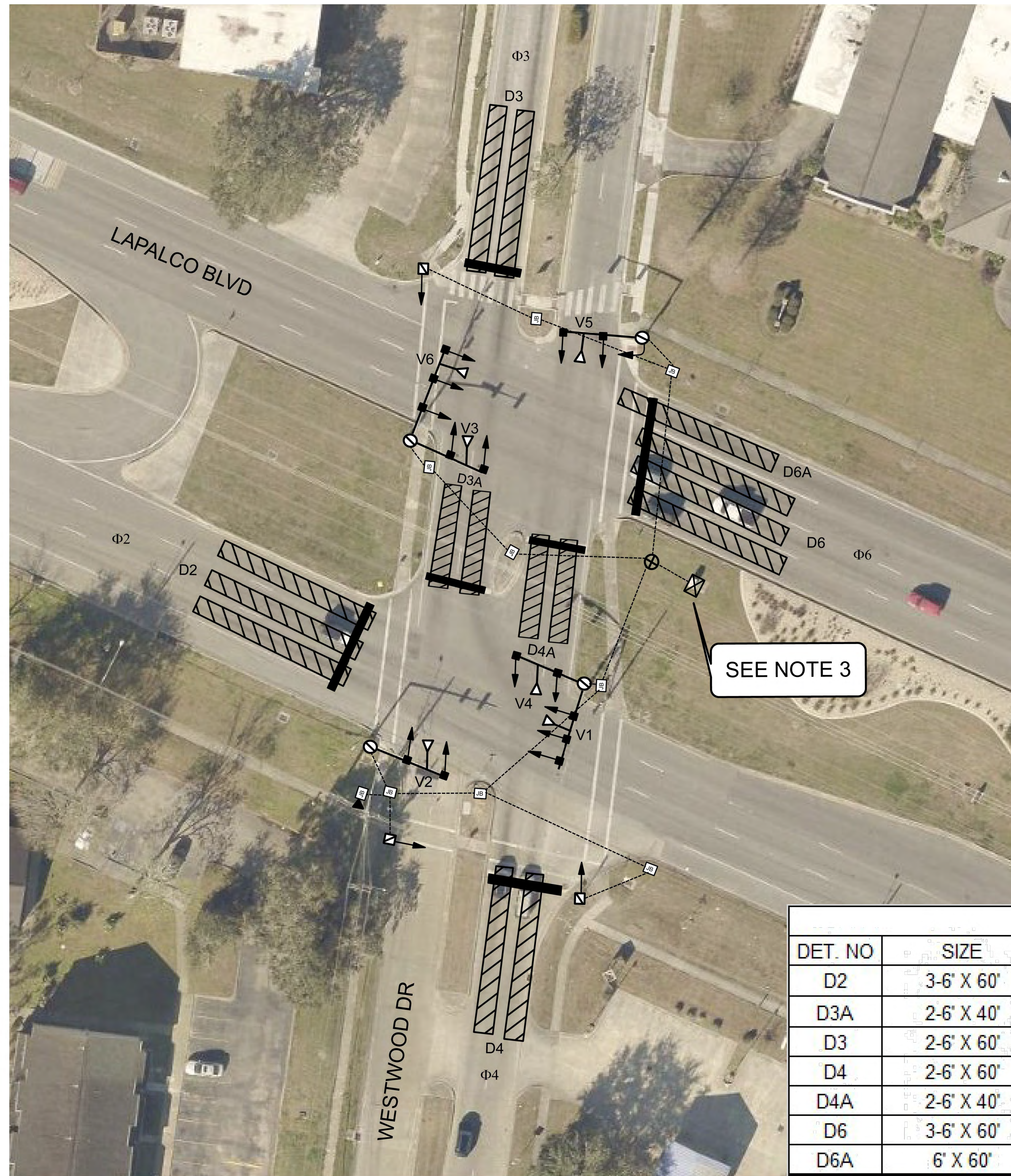
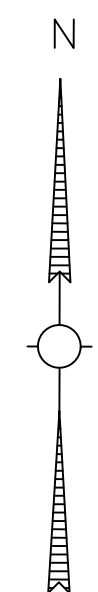
VEHICLE DETECTION CHART

DET. NO	SIZE	DEVICE	PHASE	TYPE	SPECIAL FEATURE
D2	2-6' X 60'	V1	Φ2	STOPBAR	
D5	6' X 60'	V1	Φ5	STOPBAR	
D1	6' X 50'	V2	Φ1	STOPBAR	
D3A	6' X 50'	V2	Φ3	STOPBAR	
D4	3-6' X 60'	V3	Φ4	STOPBAR	
D4A	6' X 60'	V3	Φ4	STOPBAR	DELAY, 10 SECONDS
D3	2-6' X 60'	V4	Φ3	STOPBAR	
D4B	2-6' X 50'	V5	Φ4	STOPBAR	
D5	6' X 50'	V5	Φ5	STOPBAR	
D1	6' X 60'	V6	Φ1	STOPBAR	
D6	2-6' X 60'	V6	Φ6	STOPBAR	

- NOTES:**
- ALL WORK SHALL MEET JEFFERSON PARISH STANDARDS.
 - EXISTING EQUIPMENT SHOWN ARE APPROXIMATE. CONTRACTOR TO FIELD VERIFY THE EXACT LOCATION OF JUNCTION BOXES, MANHOLES, ETC.
 - EXISTING CONTROL CABINET AND FOUNDATION IS TO BE REPLACED WITH NEW RAISED CABINET FOUNDATION AND NEW CONTROL CABINET IN THE SAME LOCATION. PROCEDURE FOR TEMPORARY SIGNAL OPERATION IMPLEMENTATION IS OUTLINED AS PER ACCOMPANYING SPECIFICATIONS.
 - EXISTING EQUIPMENT TO BE REMOVED AT PROPER TIME IN THE COURSE OF WORK AS PER ACCOMPANYING SPECIFICATIONS. ALL SALVAGED EQUIPMENT SHALL BE DELIVERED TO 2100 DICKORY AVE HARAHAN LA 70123.
 - CONTRACTOR TO INSTALL NEW TRAFFIC SIGNAL CABINET ON RAISED FOUNDATION.
 - EXISTING SIGNAL PHASING AND TIMING TO REMAIN UNLESS OTHERWISE DIRECTED BY JEFFERSON PARISH TRAFFIC ENGINEERING DIVISION.
 - CONTRACTOR SHALL PROVIDE ALL EQUIPMENT SUBMITTALS TO JEFFERSON PARISH TRAFFIC ENGINEERING DIVISION.
 - CONTRACTOR SHALL BE RESPONSIBLE FOR MAINTAINING SIGNAL OPERATIONS DURING CONSTRUCTION. CONTRACTOR MAY UTILIZE EXISTING SIGNAL EQUIPMENT, TEMPORARY SIGNAL EQUIPMENT, OR REQUIRED SIGNAL EQUIPMENT AT THEIR DISCRETION TO MAINTAIN SIGNALIZATION. POLICE CONTROL SHALL BE PROVIDED AT ANY TIME THE SIGNAL IS NOT IN FULL OPERATION. *THIS SHALL BE INCLUDED UNDER TEMPORARY SIGNS AND BARRICADES.
 - EXISTING SIGNAGE IS NOT SHOWN BUT IS TO REMAIN.
 - EXISTING DETECTION LOOPS ARE NOT SHOWN BUT ARE TO REMAIN.
 - VIDEO DETECTION CABLE TO BE INSTALLED VIA EXISTING CONDUIT, JUNCTION BOXES AND MANHOLES, AS SHOWN.
 - CONTRACTOR TO INSTALL GPS PREEMPTION AND COMMUNICATION EQUIPMENT IN NEW TRAFFIC SIGNAL CABINET AS PER ACCOMPANYING SPECIFICATIONS.



*Φ2,6 YELLOW & Φ3,4 RED CONFLICT FLASH



VEHICLE DETECTION CHART					
DET. NO	SIZE	DEVICE	PHASE	TYPE	SPECIAL FEATURE
D2	3-6' X 60'	V1	Φ2	STOPBAR	
D3A	2-6' X 40'	V2	Φ3	STOPBAR	
D3	2-6' X 60'	V3	Φ3	STOPBAR	
D4	2-6' X 60'	V4	Φ4	STOPBAR	
D4A	2-6' X 40'	V5	Φ4	STOPBAR	
D6	3-6' X 60'	V6	Φ6	STOPBAR	
D6A	6' X 60'	V6	Φ6	STOPBAR	DELAY, 10 SECONDS

NOTES:

- ALL WORK SHALL MEET JEFFERSON PARISH STANDARDS.
- EXISTING EQUIPMENT SHOWN ARE APPROXIMATE. CONTRACTOR TO FIELD VERIFY THE EXACT LOCATION OF JUNCTION BOXES, MANHOLES, ETC.
- EXISTING CONTROL CABINET AND FOUNDATION IS TO BE REPLACED WITH NEW RAISED CABINET FOUNDATION AND NEW CONTROL CABINET IN THE SAME LOCATION. PROCEDURE FOR TEMPORARY SIGNAL OPERATION IMPLEMENTATION IS OUTLINED AS PER ACCOMPANYING SPECIFICATIONS.
- EXISTING EQUIPMENT TO BE REMOVED AT PROPER TIME IN THE COURSE OF WORK AS PER ACCOMPANYING SPECIFICATIONS. ALL SALVAGED EQUIPMENT SHALL BE DELIVERED TO 2100 DICKORY AVE HARAHAN LA 70123.
- CONTRACTOR TO INSTALL NEW TRAFFIC SIGNAL CABINET ON RAISED FOUNDATION.
- EXISTING SIGNAL PHASING AND TIMING TO REMAIN UNLESS OTHERWISE DIRECTED BY JEFFERSON PARISH TRAFFIC ENGINEERING DIVISION.
- CONTRACTOR SHALL PROVIDE ALL EQUIPMENT SUBMITTALS TO JEFFERSON PARISH TRAFFIC ENGINEERING DIVISION.
- CONTRACTOR SHALL BE RESPONSIBLE FOR MAINTAINING SIGNAL OPERATIONS DURING CONSTRUCTION. CONTRACTOR MAY UTILIZE EXISTING SIGNAL EQUIPMENT, TEMPORARY SIGNAL EQUIPMENT, OR REQUIRED SIGNAL EQUIPMENT AT THEIR DISCRETION TO MAINTAIN SIGNALIZATION. POLICE CONTROL SHALL BE PROVIDED AT ANY TIME THE SIGNAL IS NOT IN FULL OPERATION. *THIS SHALL BE INCLUDED UNDER TEMPORARY SIGNS AND BARRICADES.
- EXISTING SIGNAGE IS NOT SHOWN BUT IS TO REMAIN.
- EXISTING DETECTION LOOPS ARE NOT SHOWN BUT ARE TO REMAIN.
- VIDEO DETECTION CABLE TO BE INSTALLED VIA EXISTING CONDUIT, JUNCTION BOXES AND MANHOLES, AS SHOWN.
- CONTRACTOR TO INSTALL GPS PREEMPTION AND COMMUNICATION EQUIPMENT IN NEW TRAFFIC SIGNAL CABINET AS PER ACCOMPANYING SPECIFICATIONS.

SHEET NUMBER	4	JEFFERSON PARISH	2025 - 014 - TR	N/A
PARISH	PW #	STATE PROJECT		
DESIGN CHECK	DETAIL CHECK	REVIEW	SERIES #	
NO. DATE REVISION OR CHANGE ORDER DESCRIPTION BY				
LAPALCO BLVD. TRAFFIC SIGNAL UPGRADE				
WESTWOOD DR AT LAPALCO BLVD				

ADDENDUM #1 - ADDITION

www.invarion.com

SHEET NUMBER 5

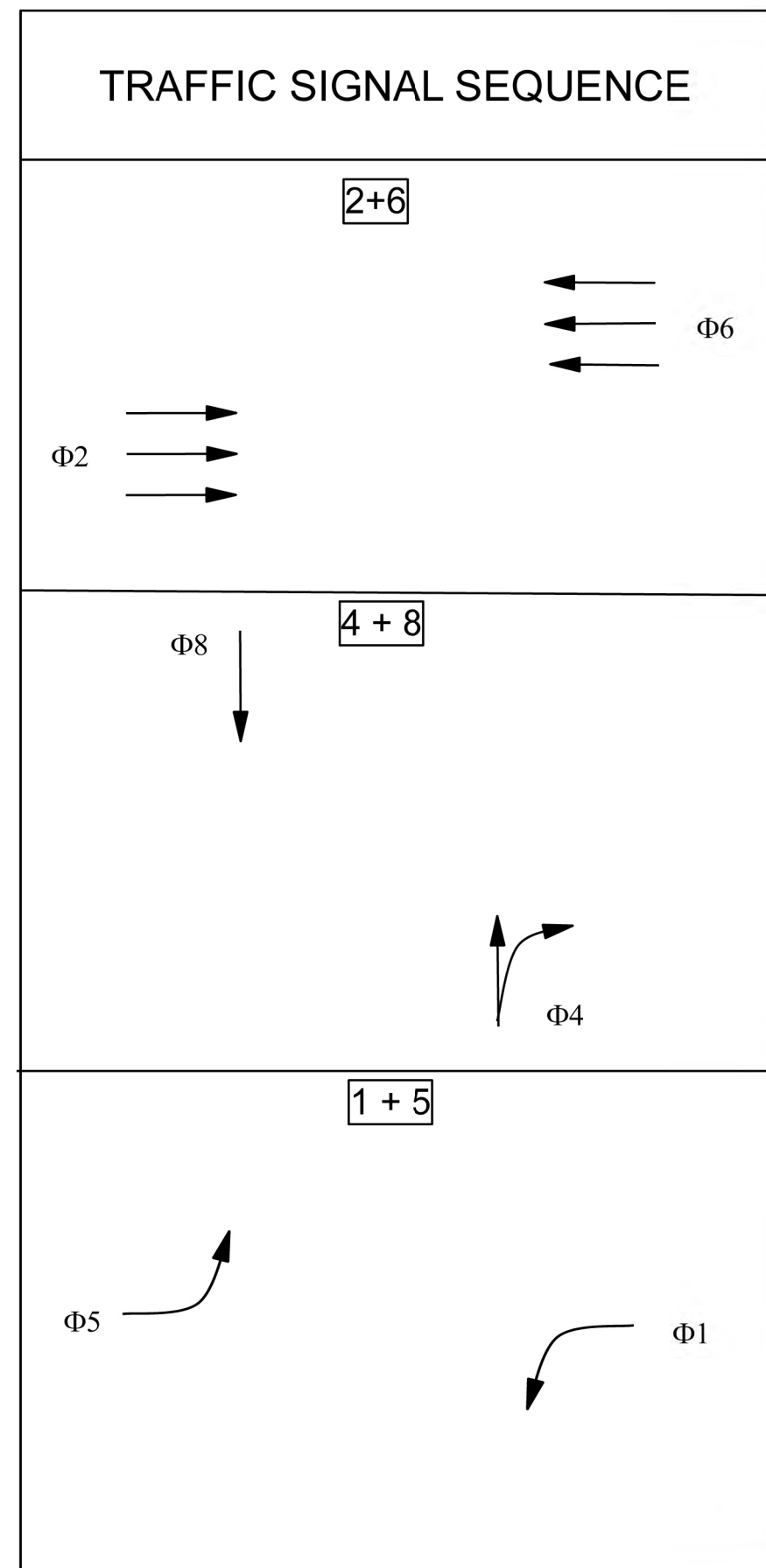
JEFFERSON PARISH
2025 - 014 - TR
N/A

DESIGN CHECK DETAIL CHECK REVIEW SERIES #

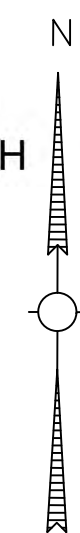
NO. DATE REVISION OR CHANGE ORDER DESCRIPTION BY

NO. DATE

LAPALCO BLVD. TRAFFIC SIGNAL UPGRADE
BETTY BLVD AT LAPALCO BLVD



*Phi 2,6 YELLOW & Phi 1,5,4,8 RED CONFLICT FLASH



LEGEND

EXISTING	PROPOSED	DESCRIPTION
		CONTROL CABINET
		TRAFFIC MANHOLE
		MAST ARM WITH SIGNAL
		PEDESTAL WITH SIGNAL
		24" STOP BAR MARKING
		VIDEO DETECTION ZONE AND NUMBER
		VIDEO DETECTION CAMERA AND NUMBER
		JUNCTION BOX
		CONDUIT
		ELECTRICAL SERVICE

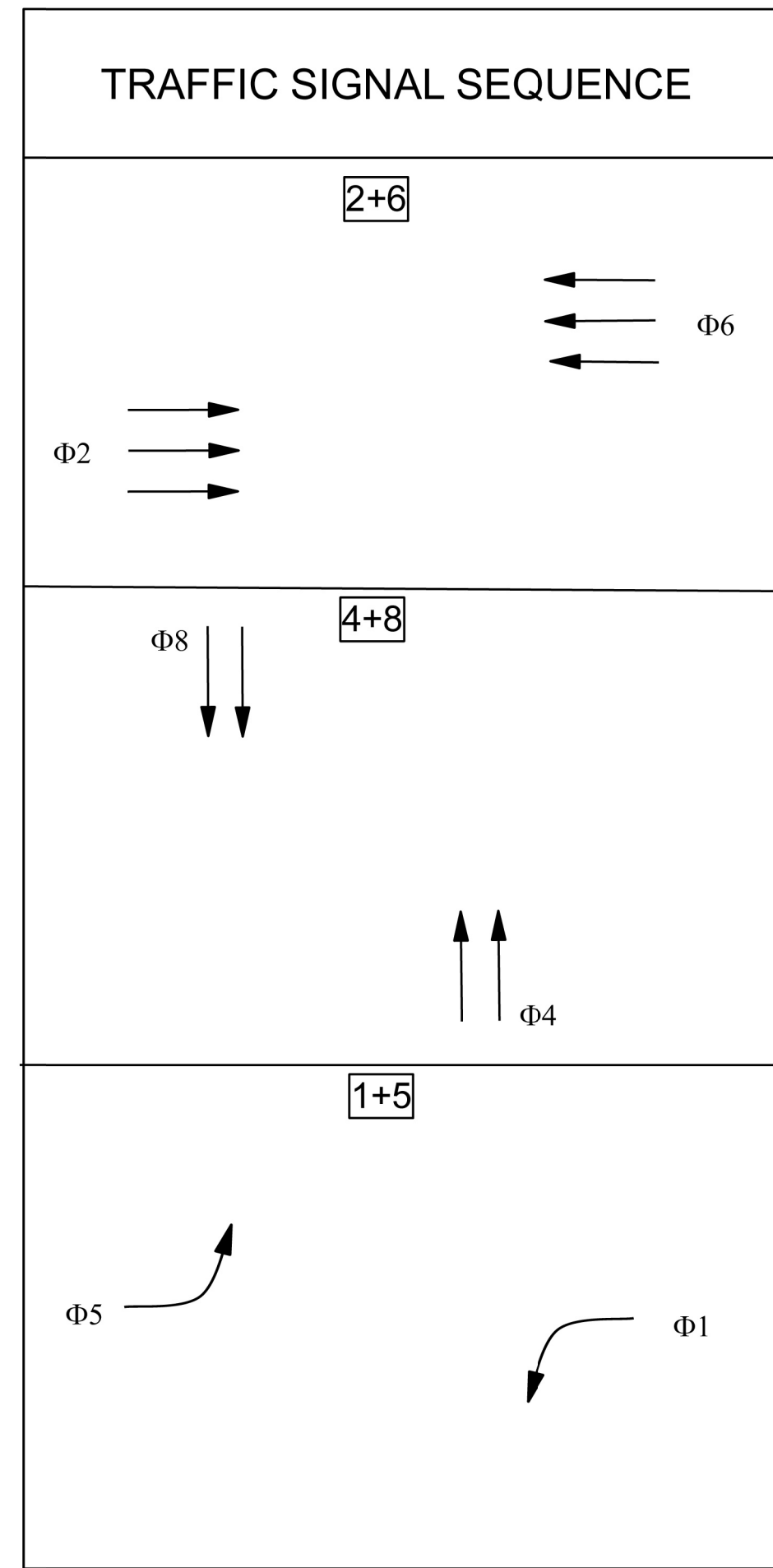
VEHICLE DETECTION CHART

DET. NO	SIZE	DEVICE	PHASE	TYPE	SPECIAL FEATURE
D1	6' X 60'	V1	Phi 1	STOPBAR	
D6	3-6' X 60'	V1	Phi 6	STOPBAR	
D2	3-6' X 60'	V2	Phi 2	STOPBAR	
D5	6' X 60'	V2	Phi 5	STOPBAR	
D4	6' X 60'	V3	Phi 4	STOPBAR	
D4A	6' X 30'	V3	Phi 4	STOPBAR	DELAY, 10 SECONDS
D8	6' X 40'	V4	Phi 8	STOPBAR	

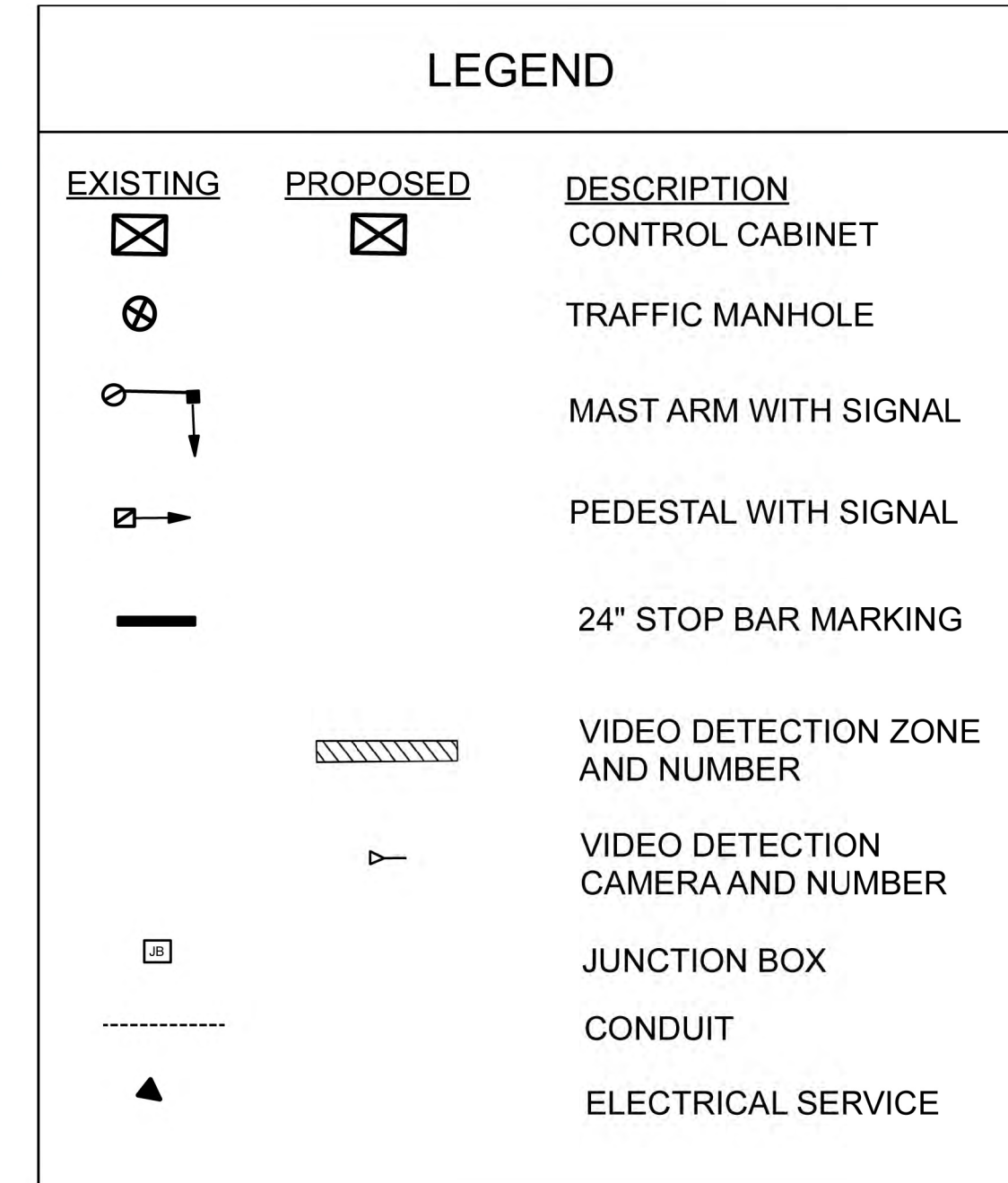
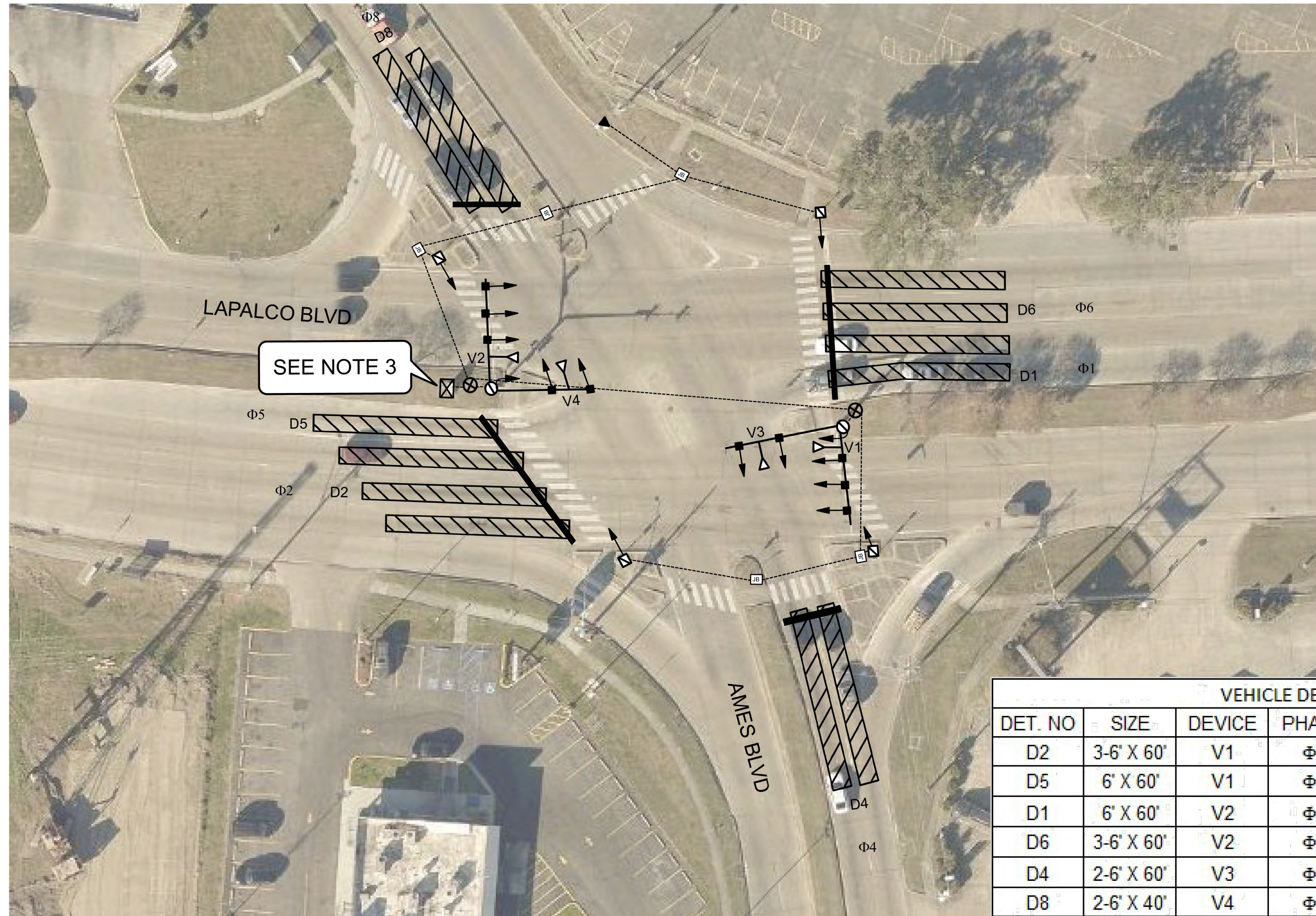
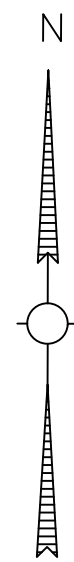
NOTES:

- ALL WORK SHALL MEET JEFFERSON PARISH STANDARDS.
- EXISTING EQUIPMENT SHOWN ARE APPROXIMATE. CONTRACTOR TO FIELD VERIFY THE EXACT LOCATION OF JUNCTION BOXES, MANHOLES, ETC.
- EXISTING CONTROL CABINET AND FOUNDATION IS TO BE REPLACED WITH NEW RAISED CABINET FOUNDATION AND NEW CONTROL CABINET IN THE SAME LOCATION. PROCEDURE FOR TEMPORARY SIGNAL OPERATION IMPLEMENTATION IS OUTLINED AS PER ACCOMPANYING SPECIFICATIONS.
- EXISTING EQUIPMENT TO BE REMOVED AT PROPER TIME IN THE COURSE OF WORK AS PER ACCOMPANYING SPECIFICATIONS. ALL SALVAGED EQUIPMENT SHALL BE DELIVERED TO 2100 DICKORY AVE HARAHAN LA 70123.
- CONTRACTOR TO INSTALL NEW TRAFFIC SIGNAL CABINET ON RAISED FOUNDATION.
- EXISTING SIGNAL PHASING AND TIMING TO REMAIN UNLESS OTHERWISE DIRECTED BY JEFFERSON PARISH TRAFFIC ENGINEERING DIVISION.
- CONTRACTOR SHALL PROVIDE ALL EQUIPMENT SUBMITTALS TO JEFFERSON PARISH TRAFFIC ENGINEERING DIVISION.
- CONTRACTOR SHALL BE RESPONSIBLE FOR MAINTAINING SIGNAL OPERATIONS DURING CONSTRUCTION. CONTRACTOR MAY UTILIZE EXISTING SIGNAL EQUIPMENT, TEMPORARY SIGNAL EQUIPMENT, OR REQUIRED SIGNAL EQUIPMENT AT THEIR DISCRETION TO MAINTAIN SIGNALIZATION. POLICE CONTROL SHALL BE PROVIDED AT ANY TIME THE SIGNAL IS NOT IN FULL OPERATION. *THIS SHALL BE INCLUDED UNDER TEMPORARY SIGNS AND BARRICADES.
- EXISTING SIGNAGE IS NOT SHOWN BUT IS TO REMAIN.
- EXISTING DETECTION LOOPS ARE NOT SHOWN BUT ARE TO REMAIN.
- VIDEO DETECTION CABLE TO BE INSTALLED VIA EXISTING CONDUIT, JUNCTION BOXES AND MANHOLES, AS SHOWN.
- CONTRACTOR TO INSTALL GPS PREEMPTION AND COMMUNICATION EQUIPMENT IN NEW TRAFFIC SIGNAL CABINET AS PER ACCOMPANYING SPECIFICATIONS.

ADDENDUM #1 - ADDITION



*ALL RED CONFLICT FLASH



VEHICLE DETECTION CHART

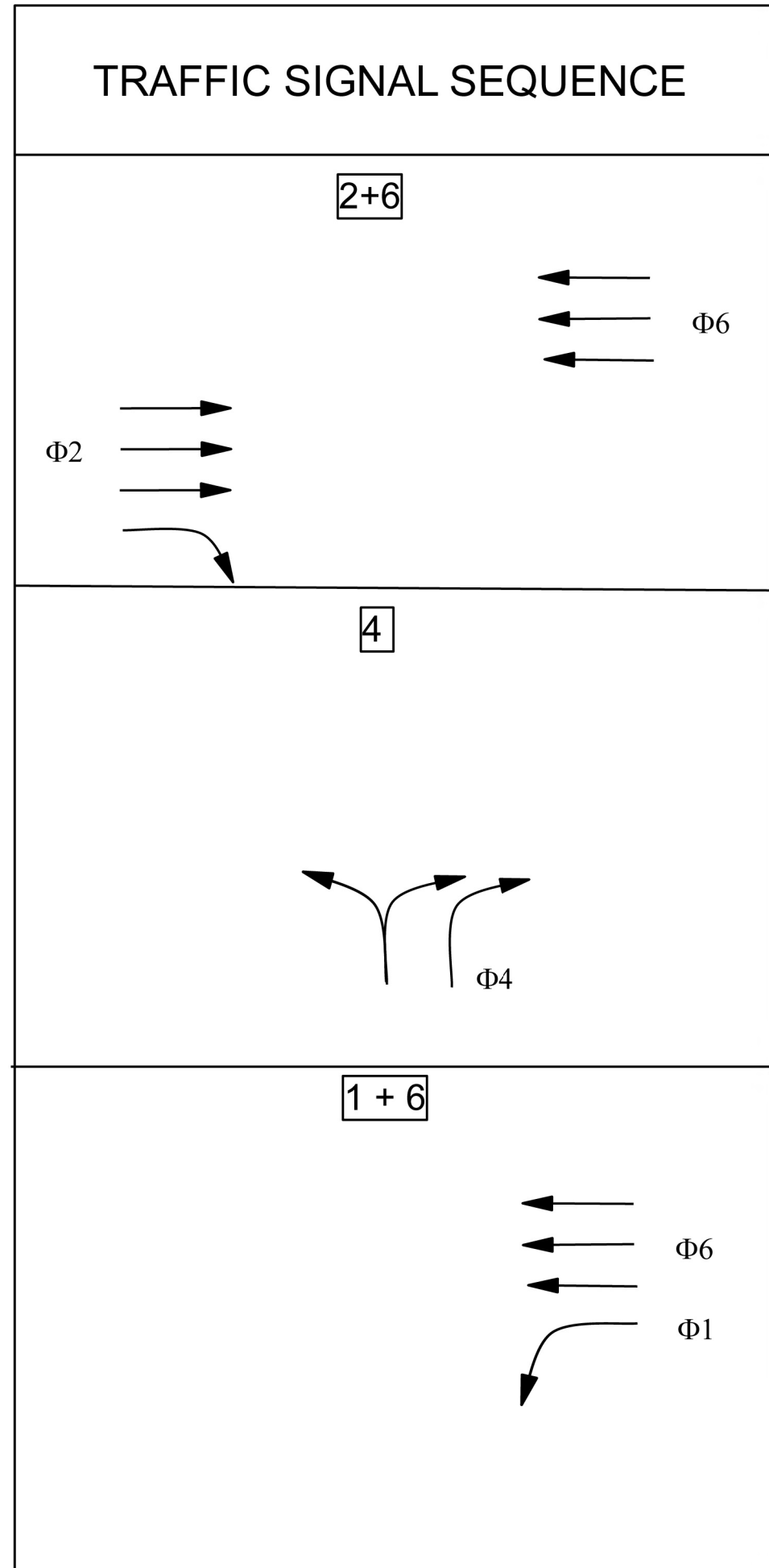
DET. NO	SIZE	DEVICE	PHASE	TYPE	SPECIAL FEATURE
D2	3-6' X 60'	V1	Φ2	STOPBAR	
D5	6' X 60'	V1	Φ5	STOPBAR	
D1	6' X 60'	V2	Φ1	STOPBAR	
D6	3-6' X 60'	V2	Φ6	STOPBAR	
D4	2-6' X 60'	V3	Φ4	STOPBAR	
D8	2-6' X 40'	V4	Φ8	STOPBAR	

NOTES:

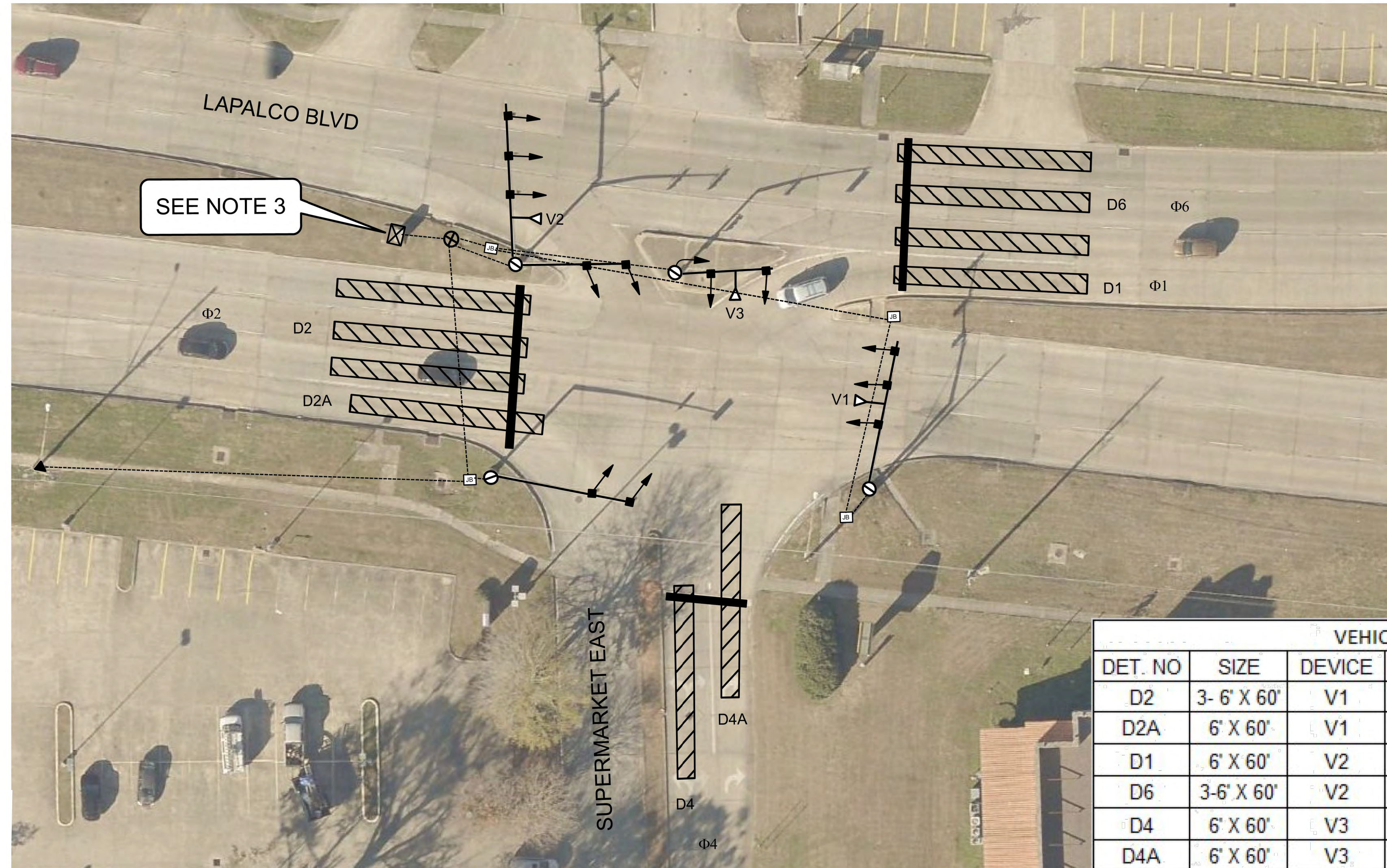
- ALL WORK SHALL MEET JEFFERSON PARISH STANDARDS.
- EXISTING EQUIPMENT SHOWN ARE APPROXIMATE. CONTRACTOR TO FIELD VERIFY THE EXACT LOCATION OF JUNCTION BOXES, MANHOLES, ETC.
- EXISTING CONTROL CABINET AND FOUNDATION IS TO BE REPLACED WITH NEW RAISED CABINET FOUNDATION AND NEW CONTROL CABINET IN THE SAME LOCATION. PROCEDURE FOR TEMPORARY SIGNAL OPERATION IMPLEMENTATION IS OUTLINED AS PER ACCOMPANYING SPECIFICATIONS.
- EXISTING EQUIPMENT TO BE REMOVED AT PROPER TIME IN THE COURSE OF WORK AS PER ACCOMPANYING SPECIFICATIONS. ALL SALVAGED EQUIPMENT SHALL BE DELIVERED TO 2100 DICKORY AVE HARRAHAN LA 70123.
- CONTRACTOR TO INSTALL NEW TRAFFIC SIGNAL CABINET ON RAISED FOUNDATION.
- EXISTING SIGNAL PHASING AND TIMING TO REMAIN UNLESS OTHERWISE DIRECTED BY JEFFERSON PARISH TRAFFIC ENGINEERING DIVISION.
- CONTRACTOR SHALL PROVIDE ALL EQUIPMENT SUBMITTALS TO JEFFERSON PARISH TRAFFIC ENGINEERING DIVISION.
- CONTRACTOR SHALL BE RESPONSIBLE FOR MAINTAINING SIGNAL OPERATIONS DURING CONSTRUCTION. CONTRACTOR MAY UTILIZE EXISTING SIGNAL EQUIPMENT, TEMPORARY SIGNAL EQUIPMENT, OR REQUIRED SIGNAL EQUIPMENT AT THEIR DISCRETION TO MAINTAIN SIGNALIZATION. POLICE CONTROL SHALL BE PROVIDED AT ANY TIME THE SIGNAL IS NOT IN FULL OPERATION. *THIS SHALL BE INCLUDED UNDER TEMPORARY SIGNS AND BARRICADES.
- EXISTING SIGNAGE IS NOT SHOWN BUT IS TO REMAIN.
- EXISTING DETECTION LOOPS ARE NOT SHOWN BUT ARE TO REMAIN.
- VIDEO DETECTION CABLE TO BE INSTALLED VIA EXISTING CONDUIT, JUNCTION BOXES AND MANHOLES, AS SHOWN.
- CONTRACTOR TO INSTALL GPS PREEMPTION AND COMMUNICATION AND BATTERY BACK UP EQUIPMENT IN NEW TRAFFIC SIGNAL CABINET AS PER ACCOMPANYING SPECIFICATIONS.

SHEET NUMBER		0	
PARISH		JEFFERSON PARISH	
PW #		2025 - 014 - TR	
STATE PROJECT		N/A	
DESIGN	CHECK	DETAIL	CHECK
REVIEW	REVIEW	SERIES #	
NO.	DATE	REVISION OR CHANGE ORDER DESCRIPTION	BY
<p>LAPALCO BLVD. TRAFFIC SIGNAL UPGRADE</p> <p>AMES BLVD AT LAPALCO BLVD</p>			

ADDENDUM #1 - ADDITION



*Φ2,6 YELLOW & Φ1,4 RED CONFLICT FLASH



LEGEND		
EXISTING	PROPOSED	DESCRIPTION
☒	☒	CONTROL CABINET
⊗	⊗	TRAFFIC MANHOLE
⤴	⤴	MAST ARM WITH SIGNAL
—	—	24" STOP BAR MARKING
	▨	VIDEO DETECTION ZONE AND NUMBER
	γ	VIDEO DETECTION CAMERA AND NUMBER
□	□	JUNCTION BOX
---	---	CONDUIT
▲	▲	ELECTRICAL SERVICE

VEHICLE DETECTION CHART					
DET. NO	SIZE	DEVICE	PHASE	TYPE	SPECIAL FEATURE
D2	3- 6' X 60'	V1	Φ2	STOPBAR	
D2A	6' X 60'	V1	Φ2	STOPBAR	DELAY, 10 SECONDS
D1	6' X 60'	V2	Φ1	STOPBAR	
D6	3-6' X 60'	V2	Φ6	STOPBAR	
D4	6' X 60'	V3	Φ4	STOPBAR	
D4A	6' X 60'	V3	Φ4	STOPBAR	DELAY, 10 SECONDS

NOTES:

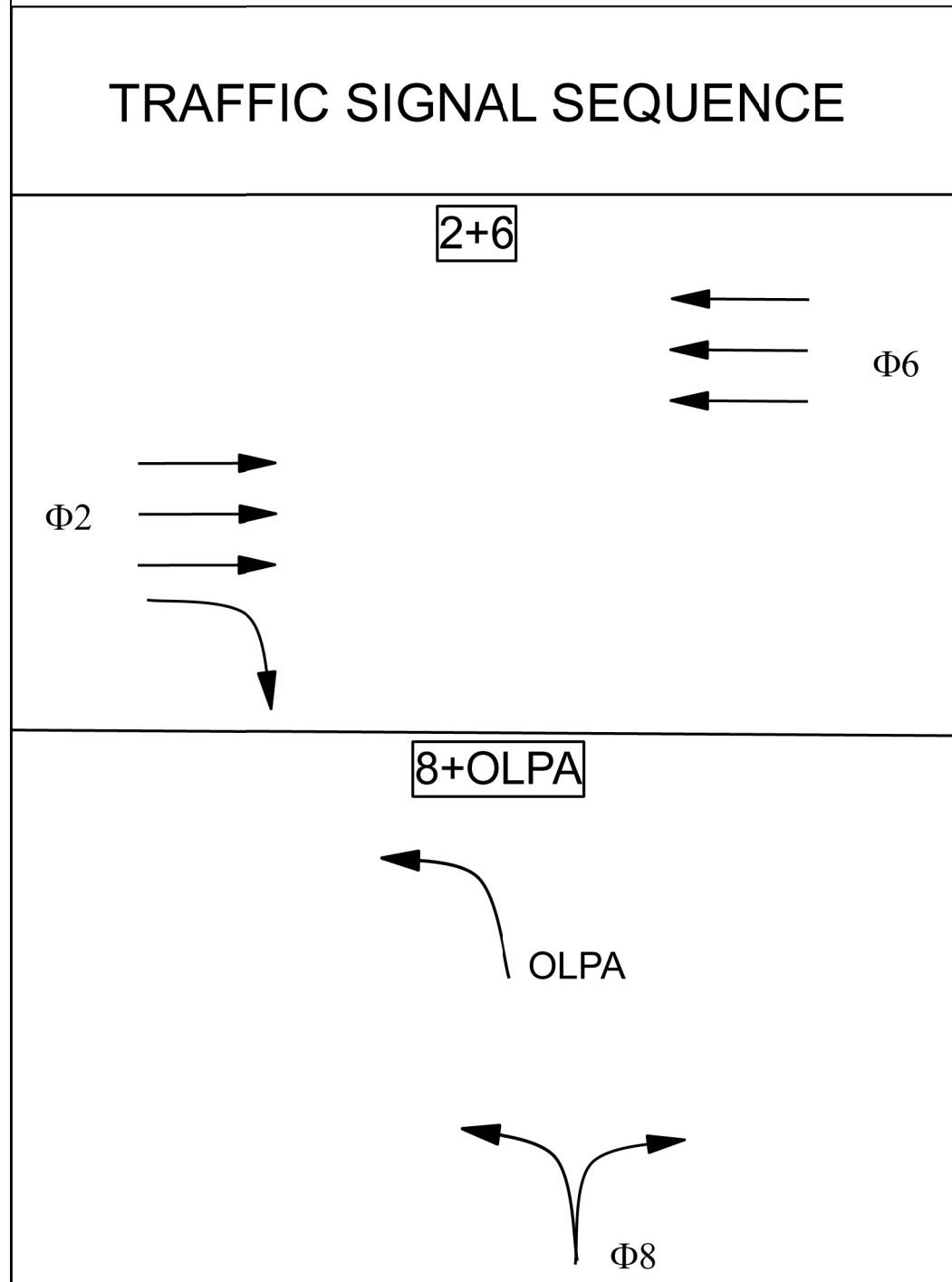
- ALL WORK SHALL MEET JEFFERSON PARISH STANDARDS.
- EXISTING EQUIPMENT SHOWN ARE APPROXIMATE. CONTRACTOR TO FIELD VERIFY THE EXACT LOCATION OF JUNCTION BOXES, MANHOLES, ETC.
- EXISTING CONTROL CABINET AND FOUNDATION IS TO BE REPLACED WITH NEW RAISED CABINET FOUNDATION AND NEW CONTROL CABINET IN THE SAME LOCATION. PROCEDURE FOR TEMPORARY SIGNAL OPERATION IMPLEMENTATION IS OUTLINED AS PER ACCOMPANYING SPECIFICATIONS.
- EXISTING EQUIPMENT TO BE REMOVED AT PROPER TIME IN THE COURSE OF WORK AS PER ACCOMPANYING SPECIFICATIONS. ALL SALVAGED EQUIPMENT SHALL BE DELIVERED TO 2100 DICKORY AVE HARRAHAN LA 70123.
- CONTRACTOR TO INSTALL NEW TRAFFIC SIGNAL CABINET ON RAISED FOUNDATION.
- EXISTING SIGNAL PHASING AND TIMING TO REMAIN UNLESS OTHERWISE DIRECTED BY JEFFERSON PARISH TRAFFIC ENGINEERING DIVISION.
- CONTRACTOR SHALL PROVIDE ALL EQUIPMENT SUBMITTALS TO JEFFERSON PARISH TRAFFIC ENGINEERING DIVISION.
- CONTRACTOR SHALL BE RESPONSIBLE FOR MAINTAINING SIGNAL OPERATIONS DURING CONSTRUCTION. CONTRACTOR MAY UTILIZE EXISTING SIGNAL EQUIPMENT, TEMPORARY SIGNAL EQUIPMENT, OR REQUIRED SIGNAL EQUIPMENT AT THEIR DISCRETION TO MAINTAIN SIGNALIZATION. POLICE CONTROL SHALL BE PROVIDED AT ANY TIME THE SIGNAL IS NOT IN FULL OPERATION. *THIS SHALL BE INCLUDED UNDER TEMPORARY SIGNS AND BARRICADES.
- EXISTING SIGNAGE IS NOT SHOWN BUT IS TO REMAIN.
- EXISTING DETECTION LOOPS ARE NOT SHOWN BUT ARE TO REMAIN.
- VIDEO DETECTION CABLE TO BE INSTALLED VIA EXISTING CONDUIT, JUNCTION BOXES AND MANHOLES, AS SHOWN.
- CONTRACTOR TO INSTALL GPS PREEMPTION AND COMMUNICATION EQUIPMENT IN NEW TRAFFIC SIGNAL CABINET AS PER ACCOMPANYING SPECIFICATIONS.

DESIGN	CHECK	DETAIL	CHECK	REVIEW	SERIES #

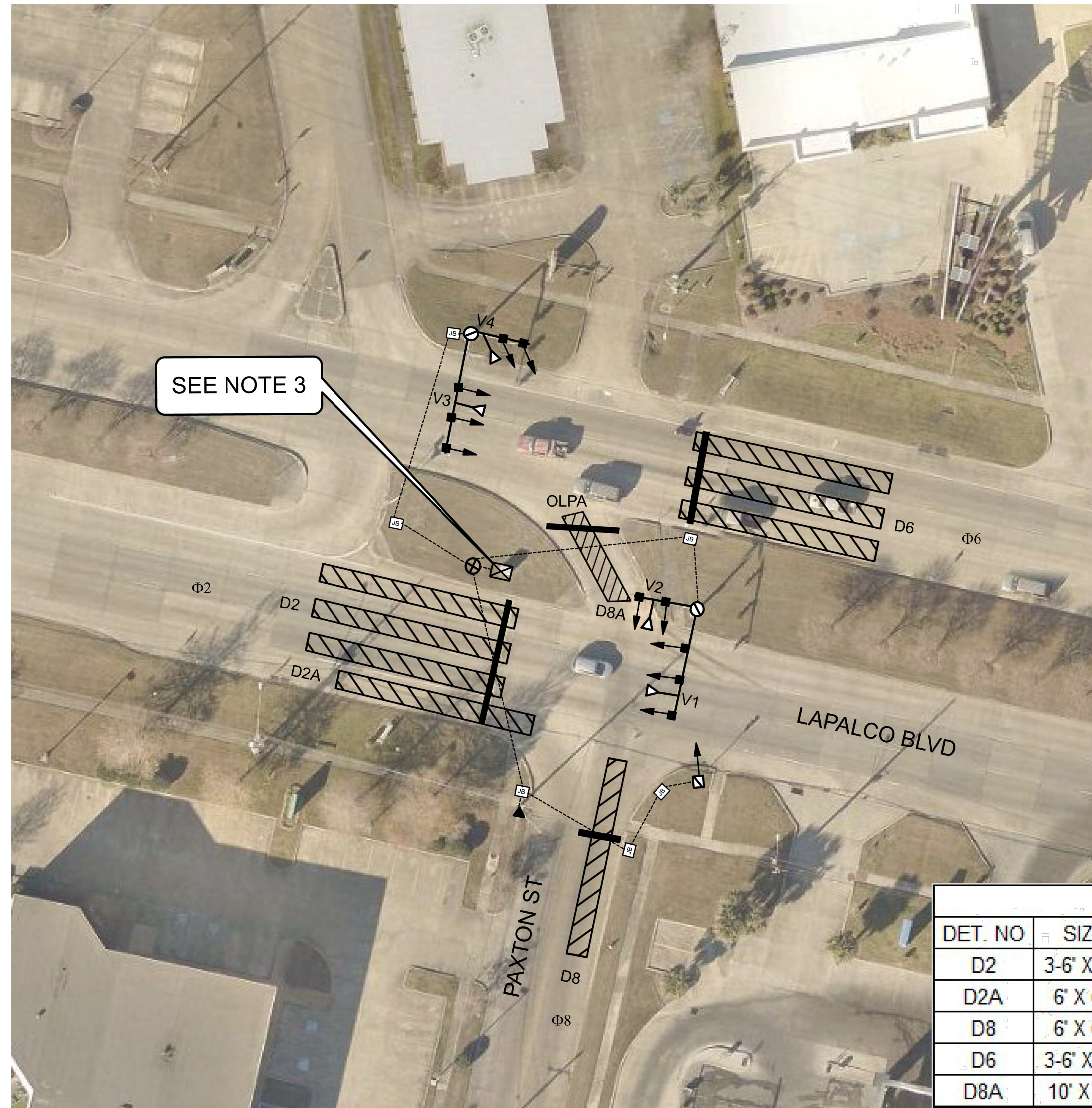
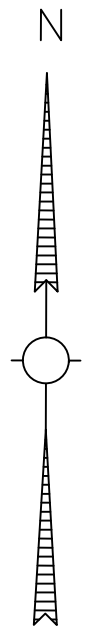
NO.	DATE	REVISION OR CHANGE ORDER DESCRIPTION	BY

LAPALCO BLVD. TRAFFIC SIGNAL UPGRADE

JEFFERSON PARISH
State of Louisiana



* Φ2,6 YELLOW & Φ8 RED CONFLICT FLASH



LEGEND		
EXISTING	PROPOSED	DESCRIPTION
		CONTROL CABINET
		TRAFFIC MANHOLE
		MAST ARM WITH SIGNAL
		PEDESTAL WITH SIGNAL
		24" STOP BAR MARKING
		VIDEO DETECTION ZONE AND NUMBER
		VIDEO DETECTION CAMERA AND NUMBER
		JUNCTION BOX
		CONDUIT
		ELECTRICAL SERVICE

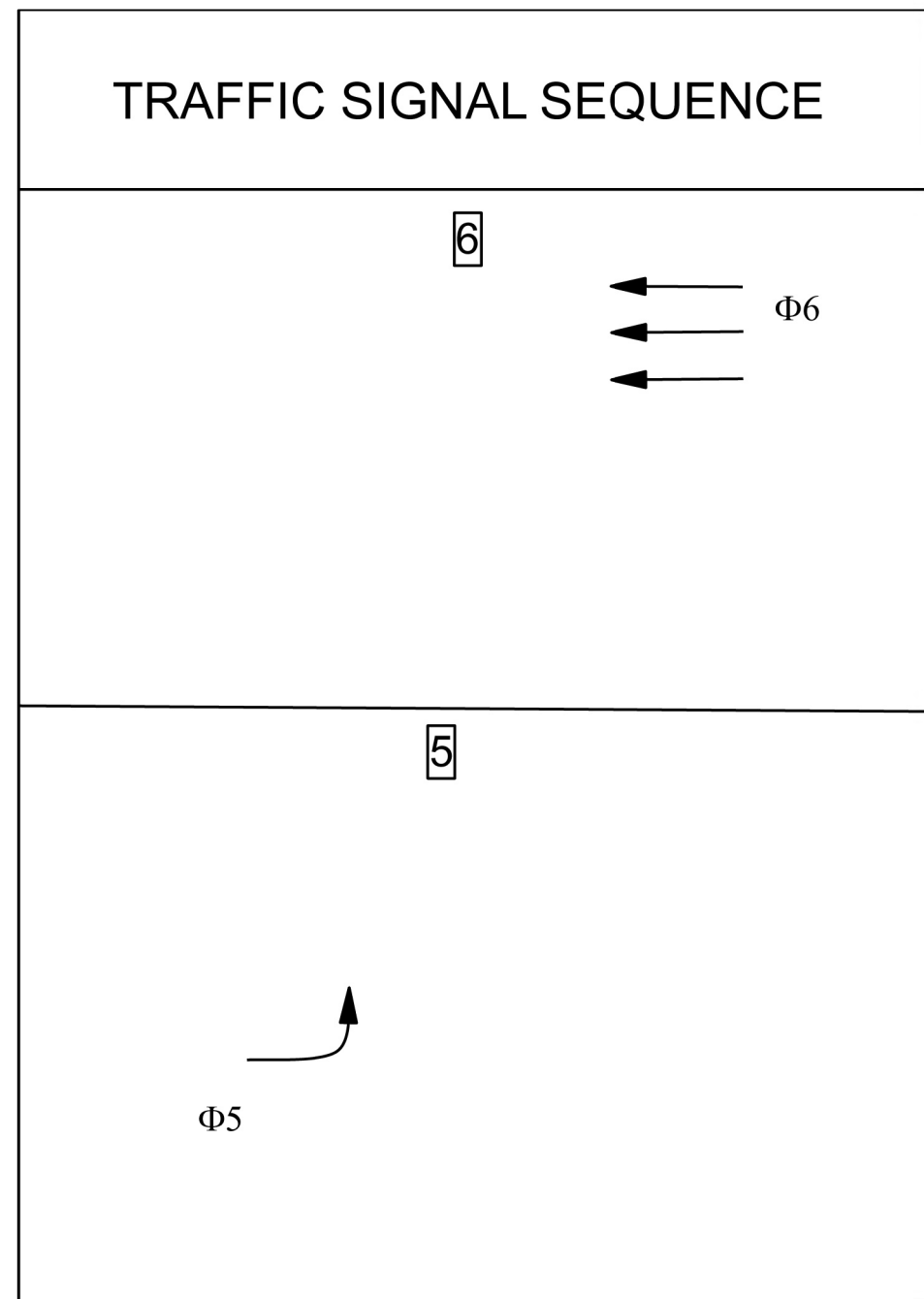
VEHICLE DETECTION CHART					
DET. NO	SIZE	DEVICE	PHASE	TYPE	SPECIAL FEATURE
D2	3-6' X 60'	V1	Φ2	STOPBAR	
D2A	6' X 60'	V1	Φ2	STOPBAR	DELAY, 10 SECONDS
D8	6' X 60'	V2	Φ8	STOPBAR	DELAY, 10 SECONDS
D6	3-6' X 60'	V3	Φ6	STOPBAR	
D8A	10' X 30'	V4	Φ8	STOPBAR	

NOTES:

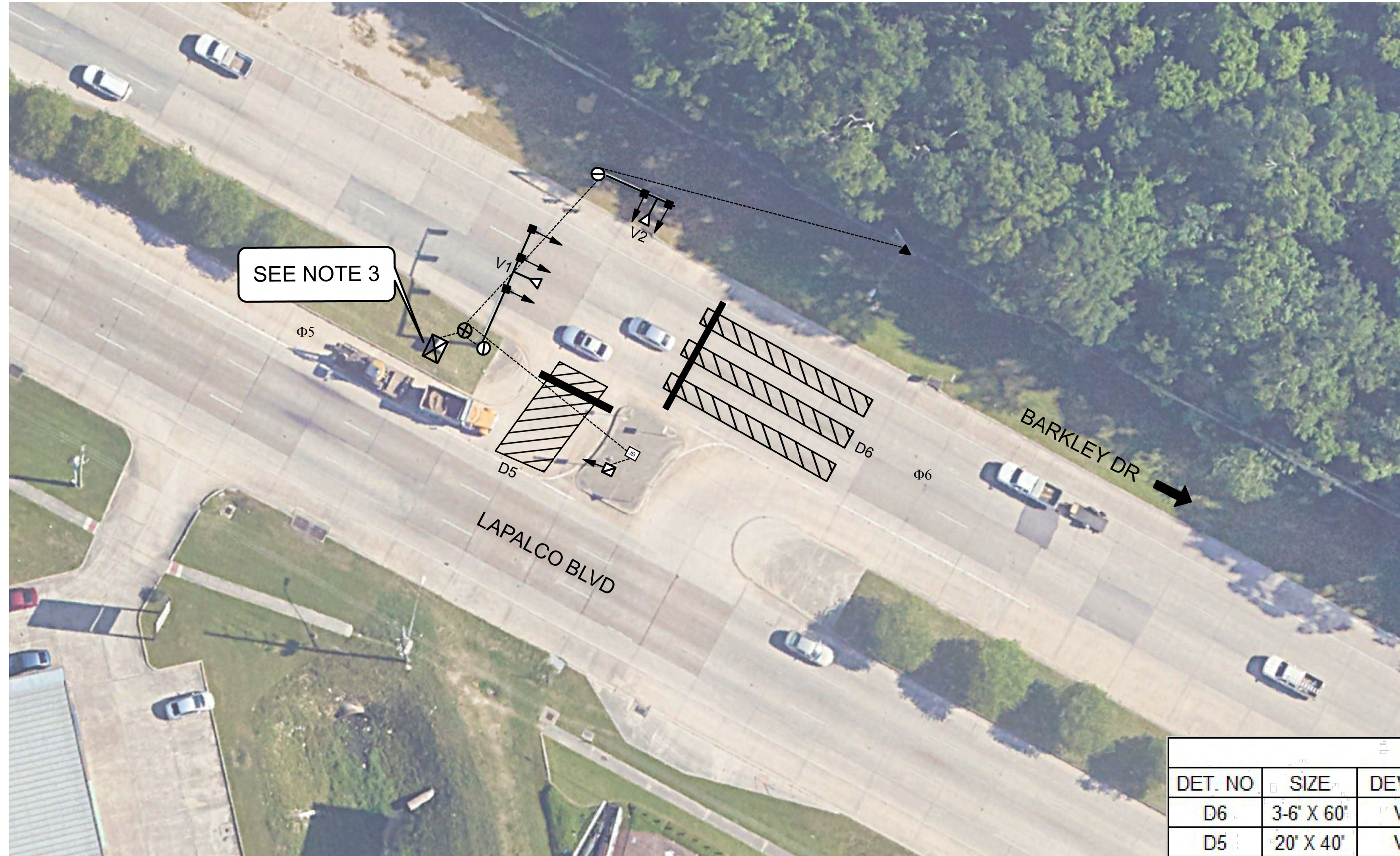
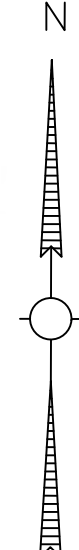
- ALL WORK SHALL MEET JEFFERSON PARISH STANDARDS.
- EXISTING EQUIPMENT SHOWN ARE APPROXIMATE. CONTRACTOR TO FIELD VERIFY THE EXACT LOCATION OF JUNCTION BOXES, MANHOLES, ETC.
- EXISTING CONTROL CABINET AND FOUNDATION IS TO BE REPLACED WITH NEW RAISED CABINET FOUNDATION AND NEW CONTROL CABINET IN THE SAME LOCATION. PROCEDURE FOR TEMPORARY SIGNAL OPERATION IMPLEMENTATION IS OUTLINED AS PER ACCOMPANYING SPECIFICATIONS.
- EXISTING EQUIPMENT TO BE REMOVED AT PROPER TIME IN THE COURSE OF WORK AS PER ACCOMPANYING SPECIFICATIONS. ALL SALVAGED EQUIPMENT SHALL BE DELIVERED TO 2100 DICKORY AVE HARRAHAN LA 70123.
- CONTRACTOR TO INSTALL NEW TRAFFIC SIGNAL CABINET ON RAISED FOUNDATION.
- EXISTING SIGNAL PHASING AND TIMING TO REMAIN UNLESS OTHERWISE DIRECTED BY JEFFERSON PARISH TRAFFIC ENGINEERING DIVISION.
- CONTRACTOR SHALL PROVIDE ALL EQUIPMENT SUBMITTALS TO JEFFERSON PARISH TRAFFIC ENGINEERING DIVISION.
- CONTRACTOR SHALL BE RESPONSIBLE FOR MAINTAINING SIGNAL OPERATIONS DURING CONSTRUCTION. CONTRACTOR MAY UTILIZE EXISTING SIGNAL EQUIPMENT, TEMPORARY SIGNAL EQUIPMENT, OR REQUIRED SIGNAL EQUIPMENT AT THEIR DISCRETION TO MAINTAIN SIGNALIZATION. POLICE CONTROL SHALL BE PROVIDED AT ANY TIME THE SIGNAL IS NOT IN FULL OPERATION. *THIS SHALL BE INCLUDED UNDER TEMPORARY SIGNS AND BARRICADES.
- EXISTING SIGNAGE IS NOT SHOWN BUT IS TO REMAIN.
- EXISTING DETECTION LOOPS ARE NOT SHOWN BUT ARE TO REMAIN.
- VIDEO DETECTION CABLE TO BE INSTALLED VIA EXISTING CONDUIT, JUNCTION BOXES AND MANHOLES, AS SHOWN.
- CONTRACTOR TO INSTALL GPS PREEMPTION AND COMMUNICATION EQUIPMENT IN NEW TRAFFIC SIGNAL CABINET AS PER ACCOMPANYING SPECIFICATIONS.

NO.	DATE	REVISION OR CHANGE ORDER DESCRIPTION	BY

ADDENDUM #1 - ADDITION



*Φ6 YELLOW & Φ5 RED CONFLICT FLASH



LEGEND

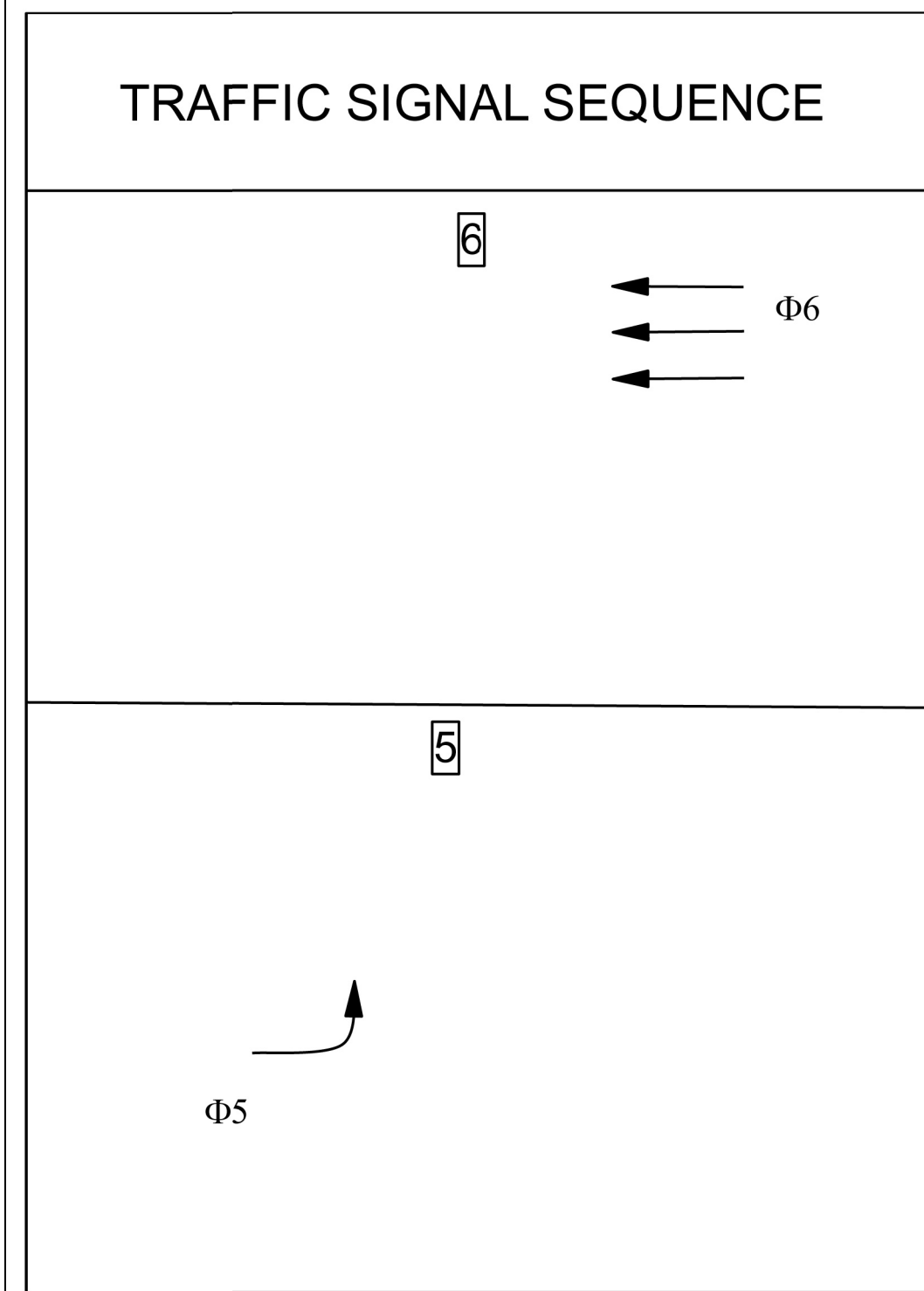
EXISTING	PROPOSED	DESCRIPTION
		CONTROL CABINET
		TRAFFIC MANHOLE
		MAST ARM WITH SIGNAL
		PEDESTAL WITH SIGNAL
		24" STOP BAR MARKING
		VIDEO DETECTION ZONE AND NUMBER
		VIDEO DETECTION CAMERA AND NUMBER
		JUNCTION BOX
		CONDUIT
		ELECTRICAL SERVICE

VEHICLE DETECTION CHART

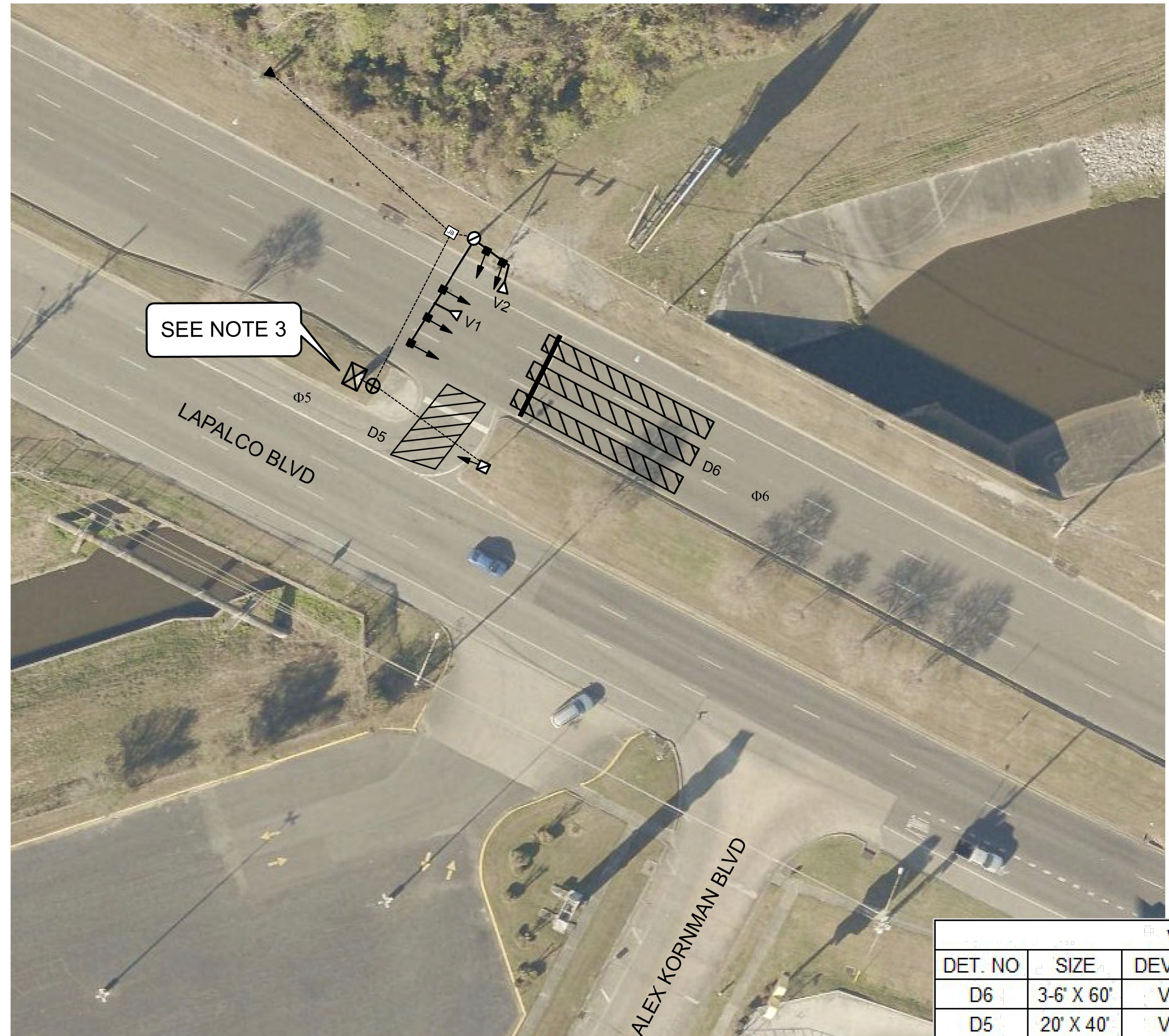
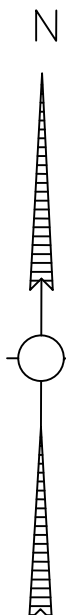
DET. NO	SIZE	DEVICE	PHASE	TYPE	SPECIAL FEATURE
D6	3-6' X 60'	V1	Φ6	STOPBAR	
D5	20' X 40'	V2	Φ5	STOPBAR	

NOTES:

1. ALL WORK SHALL MEET JEFFERSON PARISH STANDARDS.
2. EXISTING EQUIPMENT SHOWN ARE APPROXIMATE. CONTRACTOR TO FIELD VERIFY THE EXACT LOCATION OF JUNCTION BOXES, MANHOLES, ETC.
3. EXISTING CONTROL CABINET IS TO BE REPLACED WITH NEW CONTROL CABINET ON EXISTING RAISED FOUNDATION.
4. EXISTING EQUIPMENT TO BE REMOVED AT PROPER TIME IN THE COURSE OF WORK AS PER ACCOMPANYING SPECIFICATIONS. ALL SALVAGED EQUIPMENT SHALL BE DELIVERED TO 2100 DICKORY AVE HARAHAN LA 70123.
5. EXISTING SIGNAL PHASING AND TIMING TO REMAIN UNLESS OTHERWISE DIRECTED BY JEFFERSON PARISH TRAFFIC ENGINEERING DIVISION.
6. CONTRACTOR SHALL PROVIDE ALL EQUIPMENT SUBMITTALS TO JEFFERSON PARISH TRAFFIC ENGINEERING DIVISION.
7. CONTRACTOR SHALL BE RESPONSIBLE FOR MAINTAINING SIGNAL OPERATIONS DURING CONSTRUCTION. CONTRACTOR MAY UTILIZE EXISTING SIGNAL EQUIPMENT, TEMPORARY SIGNAL EQUIPMENT, OR REQUIRED SIGNAL EQUIPMENT AT THEIR DISCRETION TO MAINTAIN SIGNALIZATION. POLICE CONTROL SHALL BE PROVIDED AT ANY TIME THE SIGNAL IS NOT IN FULL OPERATION. *THIS SHALL BE INCLUDED UNDER TEMPORARY SIGNS AND BARRICADES.
8. EXISTING SIGNAGE IS NOT SHOWN BUT IS TO REMAIN.
9. EXISTING DETECTION LOOPS ARE NOT SHOWN BUT ARE TO REMAIN.
10. VIDEO DETECTION CABLE TO BE INSTALLED VIA EXISTING CONDUIT, JUNCTION BOXES AND MANHOLES, AS SHOWN.
11. CONTRACTOR TO INSTALL GPS PREEMPTION AND COMMUNICATION EQUIPMENT IN NEW TRAFFIC SIGNAL CABINET AS PER ACCOMPANYING SPECIFICATIONS.



*Φ6 YELLOW & Φ5 RED CONFLICT FLASH



LEGEND

EXISTING	PROPOSED	DESCRIPTION
		CONTROL CABINET
		TRAFFIC MANHOLE
		MAST ARM WITH SIGNAL
		PEDESTAL WITH SIGNAL
		24" STOP BAR MARKING
		VIDEO DETECTION ZONE AND NUMBER
		VIDEO DETECTION CAMERA AND NUMBER
		JUNCTION BOX
		CONDUIT
		ELECTRICAL SERVICE

VEHICLE DETECTION CHART

DET. NO	SIZE	DEVICE	PHASE	TYPE	SPECIAL FEATURE
D6	3-6' X 60'	V1	Φ6	STOPBAR	
D5	20' X 40'	V2	Φ5	STOPBAR	

NOTES:

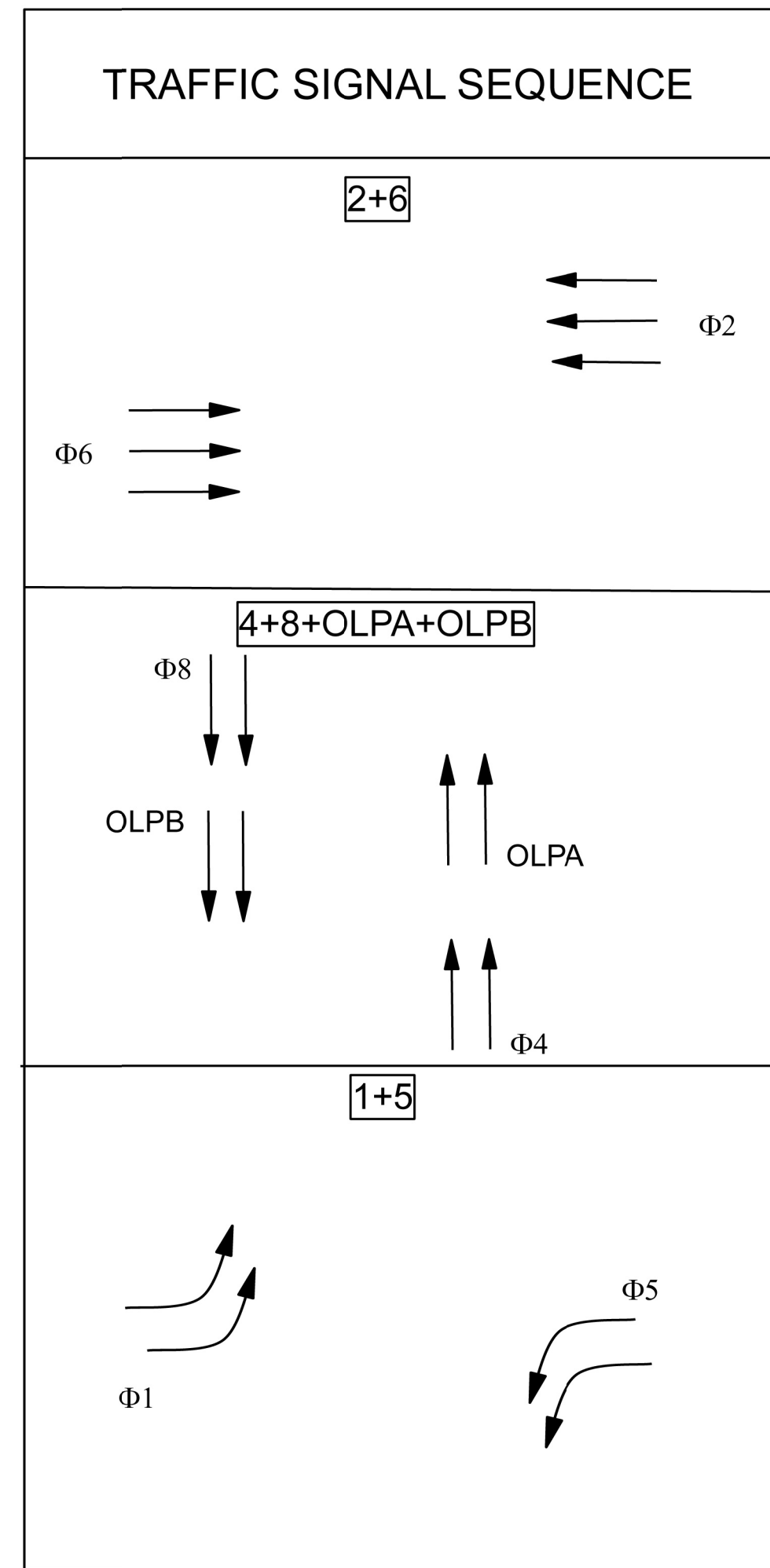
- ALL WORK SHALL MEET JEFFERSON PARISH STANDARDS.
- EXISTING EQUIPMENT SHOWN ARE APPROXIMATE. CONTRACTOR TO FIELD VERIFY THE EXACT LOCATION OF JUNCTION BOXES, MANHOLES, ETC.
- EXISTING CONTROL CABINET IS TO BE REPLACED WITH NEW CONTROL CABINET ON EXISTING RAISED FOUNDATION.
- EXISTING EQUIPMENT TO BE REMOVED AT PROPER TIME IN THE COURSE OF WORK AS PER ACCOMPANYING SPECIFICATIONS. ALL SALVAGED EQUIPMENT SHALL BE DELIVERED TO 2100 DICKORY AVE HARAHAN LA 70123.
- EXISTING SIGNAL PHASING AND TIMING TO REMAIN UNLESS OTHERWISE DIRECTED BY JEFFERSON PARISH TRAFFIC ENGINEERING DIVISION.
- CONTRACTOR SHALL PROVIDE ALL EQUIPMENT SUBMITTALS TO JEFFERSON PARISH TRAFFIC ENGINEERING DIVISION.
- CONTRACTOR SHALL BE RESPONSIBLE FOR MAINTAINING SIGNAL OPERATIONS DURING CONSTRUCTION. CONTRACTOR MAY UTILIZE EXISTING SIGNAL EQUIPMENT, TEMPORARY SIGNAL EQUIPMENT, OR REQUIRED SIGNAL EQUIPMENT AT THEIR DISCRETION TO MAINTAIN SIGNALIZATION. POLICE CONTROL SHALL BE PROVIDED AT ANY TIME THE SIGNAL IS NOT IN FULL OPERATION. *THIS SHALL BE INCLUDED UNDER TEMPORARY SIGNS AND BARRICADES.
- EXISTING SIGNAGE IS NOT SHOWN BUT IS TO REMAIN.
- EXISTING DETECTION LOOPS ARE NOT SHOWN BUT ARE TO REMAIN.
- VIDEO DETECTION CABLE TO BE INSTALLED VIA EXISTING CONDUIT, JUNCTION BOXES AND MANHOLES, AS SHOWN.
- CONTRACTOR TO INSTALL GPS PREEMPTION AND COMMUNICATION EQUIPMENT IN NEW TRAFFIC SIGNAL CABINET AS PER ACCOMPANYING SPECIFICATIONS.

PARISH	PROJECT
JEFFERSON PARISH	2025 - 014 - TR
CHECK	REVISION OR CHANGE ORDER DESCRIPTION
DESIGN	NO.
DATE	BY

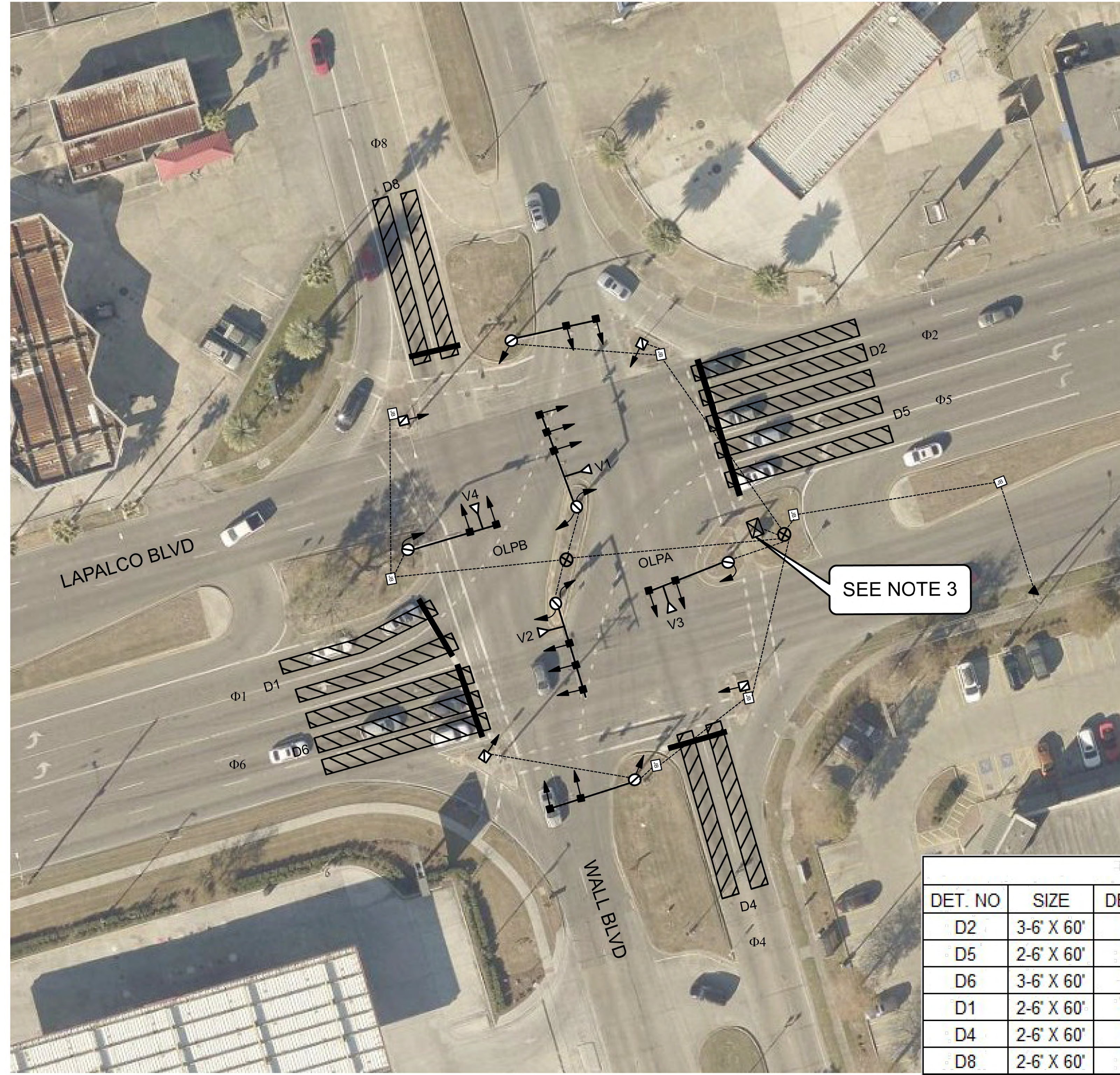
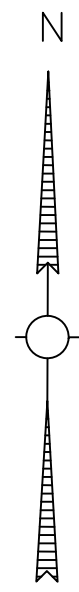
LAPALCO BLVD. TRAFFIC SIGNAL UPGRADE

ALEX KORNMANN AT LAPALCO BLVD





*ALL RED CONFLICT FLASH



LEGEND

EXISTING	PROPOSED	DESCRIPTION
☒	☒	CONTROL CABINET
⊗		TRAFFIC MANHOLE
⊙		MAST ARM WITH SIGNAL
⊙		PEDESTAL WITH SIGNAL
—		24" STOP BAR MARKING
	▨	VIDEO DETECTION ZONE AND NUMBER
	⤴	VIDEO DETECTION CAMERA AND NUMBER
	☐	JUNCTION BOX
	---	CONDUIT
	▲	ELECTRICAL SERVICE

VEHICLE DETECTION CHART

DET. NO	SIZE	DEVICE	PHASE	TYPE	SPECIAL FEATURE
D2	3-6' X 60'	V1	Φ2	STOPBAR	
D5	2-6' X 60'	V1	Φ5	STOPBAR	
D6	3-6' X 60'	V2	Φ6	STOPBAR	
D1	2-6' X 60'	V2	Φ1	STOPBAR	
D4	2-6' X 60'	V3	Φ4	STOPBAR	
D8	2-6' X 60'	V4	Φ8	STOPBAR	

NOTES:

- ALL WORK SHALL MEET JEFFERSON PARISH STANDARDS.
- EXISTING EQUIPMENT SHOWN ARE APPROXIMATE. CONTRACTOR TO FIELD VERIFY THE EXACT LOCATION OF JUNCTION BOXES, MANHOLES, ETC.
- EXISTING CONTROL CABINET AND FOUNDATION IS TO BE REPLACED WITH NEW RAISED CABINET FOUNDATION AND NEW CONTROL CABINET IN THE SAME LOCATION. PROCEDURE FOR TEMPORARY SIGNAL OPERATION IMPLEMENTATION IS OUTLINED AS PER ACCOMPANYING SPECIFICATIONS.
- EXISTING EQUIPMENT TO BE REMOVED AT PROPER TIME IN THE COURSE OF WORK AS PER ACCOMPANYING SPECIFICATIONS. ALL SALVAGED EQUIPMENT SHALL BE DELIVERED TO 2100 DICKORY AVE HARAHAN LA 70123.
- CONTRACTOR TO INSTALL NEW TRAFFIC SIGNAL CABINET ON RAISED FOUNDATION.
- EXISTING SIGNAL PHASING AND TIMING TO REMAIN UNLESS OTHERWISE DIRECTED BY JEFFERSON PARISH TRAFFIC ENGINEERING DIVISION.
- CONTRACTOR SHALL PROVIDE ALL EQUIPMENT SUBMITTALS TO JEFFERSON PARISH TRAFFIC ENGINEERING DIVISION.
- CONTRACTOR SHALL BE RESPONSIBLE FOR MAINTAINING SIGNAL OPERATIONS DURING CONSTRUCTION. CONTRACTOR MAY UTILIZE EXISTING SIGNAL EQUIPMENT, TEMPORARY SIGNAL EQUIPMENT, OR REQUIRED SIGNAL EQUIPMENT AT THEIR DISCRETION TO MAINTAIN SIGNALIZATION. POLICE CONTROL SHALL BE PROVIDED AT ANY TIME THE SIGNAL IS NOT IN FULL OPERATION. *THIS SHALL BE INCLUDED UNDER TEMPORARY SIGNS AND BARRICADES.
- EXISTING SIGNAGE IS NOT SHOWN BUT IS TO REMAIN.
- EXISTING DETECTION LOOPS ARE NOT SHOWN BUT ARE TO REMAIN.
- VIDEO DETECTION CABLE TO BE INSTALLED VIA EXISTING CONDUIT, JUNCTION BOXES AND MANHOLES, AS SHOWN.
- CONTRACTOR TO INSTALL GPS PREEMPTION AND COMMUNICATION AND BATTERY BACK UP EQUIPMENT IN NEW TRAFFIC SIGNAL CABINET AS PER ACCOMPANYING SPECIFICATIONS.

NO.	DATE	REVISION OR CHANGE ORDER DESCRIPTION	BY

LAPALCO BLVD. TRAFFIC SIGNAL UPGRADE

WALL BLVD AT LAPALCO BLVD

