

ADDENDUM NO. 02

May 01, 2026

PROJECT: Baton Rouge Terminal Interior Upgrades
9430 Jackie Cochran Dr.
Baton Rouge, LA 70811

ARCHITECT: Washer Hill Lipscomb Cabaniss Architecture (LA) LLC, WHLC Architecture
1744 Oakdale Drive
Baton Rouge, LA 70810

Incorporate in the plans and the project manual the following additions, deletions, changes and clarifications. Each item shall be governed by the conditions set forth in Division 1 General Requirements of this Project Manual and the specific conditions set forth in the sections of the specifications pertaining to the item:

ADDENDUM NO. 02

Total Pages: 3 - (8 ½" x 11") including Title Sheet
4 - (24" x 36")

GENERAL NOTES

- Reference Specification Section 01 50 00 Temporary Facilities & Controls
 - It would be allowable for the contractor to use existing utilities (electricity and water) so long as it does not disrupt normal airport operations and the utility costs are credited back to the airport monthly.
 - The contractor will be responsible for temporary heating, cooling, and ventilation.
 - The temporary parking, laydown area, dumpsters, and jobsite office can be located behind the rental car building. There is existing access via roads to the site. Material delivery will be discussed in detail during the Pre-Construction Meeting with the contractor awarded the project. There are no limitations currently expected on deliveries, just consideration for minimal impact to the passengers.
- As noted in the Phasing General Notes and in specification section 10 22 00, the temporary partitions and doors are to be turned over to the Owner at project completion.
- Per Phasing General Notes on sheets PH1.0, PH1.1, PH2.0, PH2.1, and PH2.2, the contractor shall provide vinyl graphic film applied to 25% of the public-facing side of the temporary partitions. The Owner shall provide graphics for the vinyl film.
- The temporary partition work should take place after the last aircraft arrival 12:00am - 4:00am.
- Complete enclosure shall be provided by the temporary partitions to mitigate passage of dust, sound, etc. into the public-facing side.

- Refer to the phasing plans (PH1.0, PH1.1, PH2.0, PH2.1, PH2.2) for all work designated to be completed after normal business hours. The definition of after hours varies depending on the location within the terminal - refer to the Phasing Plans. All other work is permitted during normal operational hours within the temporary partitions.
- Relocation / reinstallation of TSA equipment is to be the responsibility of TSA as necessary. The contractor shall hold a preconstruction coordination meeting with TSA prior to the start of the work.
- Security, badging, and access information will be discussed in detail during the Pre-Construction Meeting with the contractor awarded the project.
- Construction areas in the SIDA will need to have tools at the end of each day secured from access by airport personnel or the public. This can either be storing tools in a secure area with limited access or removal of these items each day. The airport has an Airport Working Screening program enforced by the TSA but performed by airport police on random doors that workers may access during the project and can only have tools and equipment on them that pertain to their job duties. No restrictions on doors relevant to the areas being worked in other than minimizing passenger inconvenience when possible.
- All personnel that will be working regularly on-site will be required to be issued a SIDA badge for access. Airport staff will not escort workers. The contractor is responsible for escorting any relevant unbadged personnel in the SIDA construction areas as per SIDA regulations.
- Please refer to the demolition plans for notes regarding the scope and responsibilities of the contractor at the Ticket Counters and Gate Kiosks. The contractor shall hold preconstruction coordination meetings with each airline prior to the start of the work.
- The existing airline ticket kiosks will not need to be stored as they will be relocated temporarily during the phasing of the work. Refer to the phasing plans and the demolition plans. The contractor shall hold preconstruction coordination meetings with each airline prior to the start of the work.
- Per the Responsibility Matrix on A12.0, the Ticket Counter monitors, Gate Kiosk monitors, and Gate Backscreen monitors are to be furnished and installed by the contractor. Per the Responsibility Matrix on A12.1, the Rental Car monitors to be furnished and installed by the contractor as part of Add Alternate #3.
- The phases on the first and second levels are intended to occur simultaneously.
- The content player and content management system (CMS) intended to interface with the specified large format LED display systems is to be provided by the Owner separately from the GC's scope.

SPECIFICATIONS

N/A

DRAWINGS

Sheet A15.8: See attached *revised* sheet clarifying the finish for material CS-1. **1 page** (24"x36")

ELECTRICAL

Sheet E0.0: See attached *revised* sheet. **1 page** (24"x36")

Sheet E1.1: See attached *revised* sheet. **1 page** (24"x36")

Sheet E2.2: See attached *revised* sheet. **1 page** (24"x36")

PRIOR APPROVALS

- A. This addendum article is concerned solely with substitution of items of materials, products, and equipment prior to submittal of Bid Proposal as provided for in the Instructions to Bidders. No other items shall be substituted or bid.
- B. Items allowed by this Prior Approval are subject to full compliance with the provisions of original Contract Documents including all modifications thereto and shall be warranted as substitutions conforming to Contract Documents requirements. Prior approval shall in no way relieve the Bidder from providing materials and workmanship in accordance with the intent of original Contract Documents.
- C. Approvals are based on the opinion, knowledge, information, and belief of Architect at time of issuance of this Addendum and reliance upon data submitted. Approval is interim in nature and subject to reconsideration as additional data, materials, workmanship, and coordination with other work are observed and reviewed. In proposing items and manufactures allowed by this Addendum, Bidder assumes all risks, costs, and responsibility for final acceptance, integration into the work, and performance.
- D. The following manufacturers are Prior-approved as equals pending submittals verifying that all applicable options and project requirements are met:

<u>ITEM</u>	<u>MANUFACTURER</u>
10 22 00, Section 2.1	Abatement Technologies Shield Wall



100% CD
03.11.2026
23-027
ADDENDUM #01 04.27.2026

ROOM FINISH LEGEND

MATERIAL FINISH TYPE	TYPICAL MATERIAL TYPE LOCATION, RE: FINISH SCHEDULE FOR ALL LOCATIONS
CARPET	
CPT-1 CARPET TILE -25cm x 1m Manufacturer: Interface Collection & Code: Bike Path Pattern: BP410 Color: 104655 Ember Install: Vertical Ashlar	RE: 2 ND FLOOR CONCOURSE A & B
<i>Or Equal</i>	
Manufacturer: Mannington - 18"x36" Collection & Code: Urban Patina Style and Color: M50990-002A-9 Backing: TBD Install: Vertical Ashlar	
CPT-2 CARPET TILE -25cm x 1m Manufacturer: Interface Collection & Code: Bike Path Pattern: BP411 Color: 104663 Ember/Red Install: Vertical Ashlar	RE: FLOOR FINISH PLAN
<i>Or Equal</i>	
Manufacturer: Mannington - 18"x36" Collection & Code: Urban Patina Style and Color: M50932-001A-9 Backing: TBD Install: Vertical Ashlar	
CPT-3 KINETEX -24"x24" Manufacturer: J+J Flooring Collection & Code: Kinetex Pattern: Network 1842/2907 Color: 2907 System Install: Quarter Turn	RE: SKY BRIDGE & TSA
<i>Or Equal</i>	
Manufacturer: EF Contract Collection & Code: Kinetex Pattern: Dart Color: DAR87 Spring Install: Quarter Turn	
CPT-4 KINETEX -24"x24" Manufacturer: J+J Flooring Collection & Code: Kinetex Pattern: Flash 1818/1723 Color: 1723 Rojo Install: Quarter Turn	RE: SKY BRIDGE & TSA
<i>Or Equal</i>	
Manufacturer: EF Contract Collection & Code: Kinetex Pattern: Intrigue Color: Transfix ITR55 Install: Quarter Turn	

ROOM FINISH LEGEND

MATERIAL FINISH TYPE	TYPICAL MATERIAL TYPE LOCATION, RE: FINISH SCHEDULE FOR ALL LOCATIONS
CPT-5 WALK-OFF CARPET TILE -25cm x 1m Manufacturer: Interface Collection & Code: Step Repeat Pattern: SR699 Color: 104933 Onyx Install: Quarter Turn	RE: ENTRY VESIBULES
<i>Or Equal</i>	
Manufacturer: Mannington - 18"x36" Collection & Code: Fixtion Style: Intertia Color: Kismet: 11360 Install: Horizontal Brick Ashlar Backing: TBD	
PORCELAIN TILE	
PT-1 PORCELAIN TILE Manufacturer: Atlas Concorde USA Collection & Code: Reflex Color: Night Size: 12 x 24 Install: Vertical Ashlar 1/3 Offset Grout: Color TBD, 1/16" Thick	CONCOURSE A CONCOURSE B
<i>Or Equal</i>	
Manufacturer: Crossville Tile Collection & Code: Retroactive 2.0 Color: Armor RET10 Size: 12 x 24 Texture: Pattern Install: Vertical Ashlar 1/3 Offset Grout: Color TBD, 1/16" Thick	
RUBBER FLOOR	
RB-1 RUBBER FLOOR Manufacturer: Johnsonite Collection & Code: Angle Fit Rubber Stair Tread with Integrated Riser Color: 63 Burnt Umber B Profile: Hammered	TERMINAL B STAIRS
<i>Or Equal</i>	
Manufacturer: Roppe Collection & Code: Raised Design Rubber Tread Color: 193 Black Brown Profile: 95 Hammered with Riser	
BASE	
B-1 SALVAGED 6"x8" TILE COVE BASE Manufacturer: Existing Collection & Code: Existing Color: Existing Salvaged and relocated from demolished areas	TYPICAL

ROOM FINISH LEGEND

MATERIAL FINISH TYPE	TYPICAL MATERIAL TYPE LOCATION, RE: FINISH SCHEDULE FOR ALL LOCATIONS
B-2 RUBBER BASE 6" Manufacturer: Johnsonite Color: 63 Burnt Umber Profile: Reveal MW-XX-F6	RE: FIRST FLOOR FINISH PLANS
<i>Or Equal</i>	
Manufacturer: Roppe Collection & Code: Contours Color: 193 Black Brown Profile: Fashion #85 PV6085	
SOLID SURFACE	
SS-1 SOLID SURFACE Manufacturer: Corian Color: Arctic Ice Finish: Standard Thickness: 1/2"	TICKET COUNTERS RENTAL CAR COUNTERS GATE COUNTERS
<i>Or Equal</i>	
Manufacturer: LG Hausys Hi-Macs or Durasein	
SS-2 SOLID SURFACE Manufacturer: Corian Color: Glacier Ice Finish: Standard Thickness: 1/2"	WAINSCOTTING
<i>Or Equal</i>	
Manufacturer: LG Hausys Hi-Macs or Durasein	
PAINT	
P-1 GENERAL PAINT Manufacturer: Sherwin Williams or Benjamin Moore Color: Color match existing Finish: Eggshell	AT DAMAGED AREAS AS NEEDED AT ALL NEW CONSTRUCTION
P-2 ACCENT PAINT Manufacturer: Sherwin Williams or Benjamin Moore Color: Color match to Sherwin Williams TBD Finish: Eggshell	BAGGAGE CLAIM RENTAL CAR TICKETING
P-3 PAINT Manufacturer: Sherwin Williams or Benjamin Moore Color: Color match to Sherwin Williams SW7103 Whitetail Finish: Flat	CEILING
P-4 PAINT Manufacturer: Sherwin Williams or Benjamin Moore Color: Color to match adjacent wall color Finish: Semi Gloss	DOOR TRIM

ROOM FINISH LEGEND

MATERIAL FINISH TYPE	TYPICAL MATERIAL TYPE LOCATION, RE: FINISH SCHEDULE FOR ALL LOCATIONS
ACOUSTICAL CEILING TILE	
ACT-1 ACOUSTIC CEILING TILE & GRID Manufacturer: Armstrong Collection & Code: Ultima, Lay-In Tegular Item Number: 1912 (2"x2"x3/4") NRC: 0.75 CAC 0.35 Grid: Interlude XL HRC Dimensional Tee 9/16" Finish: Standard White	TYPICAL
<i>Or Equal</i>	
Manufacturer: USG Collection & Code: Mars, Finline Bevel Item Number: 86985, 2"x2"x3/4" NRC: 0.75 CAC 0.35 Grid: Donn Brand Indentitee DXI Acoustical Suspension System Finish: Standard White	
STAINLESS STEEL	
STS-1 STAINLESS STEEL Manufacturer: Rigidized Metals Pattern: 4LB Material: 304 SS Finish: Satin (#4) Coating: InvariTone Gauge: 16ga	REMOVABLE PANEL'S AT TICKET COUNTERS, RENTAL CAR COUNTER, & GATE COUNTER
<i>Or Equal</i>	
Manufacturer: Rimex Pattern: S-SM Finish: Satin Metal: 304 Stainless Steel	
STS-2 STAINLESS STEEL Manufacturer: Rigidized Metal Pattern: None Finish: Walnut / InvariTone Gauge: 16ga	TICKET COUNTERS, RENTAL CAR COUNTERS GATE COUNTERS
<i>Or Equal</i>	
Manufacturer: Rimex Collection & Code: Colourtex Pattern: None Color: Charcoal Satin	
STS-3 STAINLESS STEEL Manufacturer: Rigidized Metal Pattern: None Finish: InvariTone Gauge: 16ga	METAL BASE CONCOURSE A ELEVATOR WALL
<i>Or Equal</i>	
Manufacturer: Rimex Collection & Code: Granex Pattern: Granex Color: Granex USA	

ROOM FINISH LEGEND

MATERIAL FINISH TYPE	TYPICAL MATERIAL TYPE LOCATION, RE: FINISH SCHEDULE FOR ALL LOCATIONS
COLUMN SYSTEM	
CS-1 COLUMN SURROUNDS Manufacturer: Fry Reglet Collection & Code: KSR Key Slot Reveal Shape: Square Color: Stainless Steel Metal: Rigidized Metals Pattern: 6WL Material: 304 SS	LEVEL 1 COLUMN ENCLOSURE
<i>Or Equal</i>	
Manufacturer: Gordon Architectural + Engineered Solutions Collection & Code: Reveal Joint Column Covers Shape: Square Color: Stainless Steel Metal: Rigidized Metals Pattern: 6WL Material: 304 SS	
RESIN	
R-1 RESIN Manufacturer: 3-Form Material: Chroma 1/2" Finish: Vellum PID: 453638 Custom Style: Chroma Digital Print Centered (BTR Clouds, iv) + Powder (D03) Centered	LEVEL 1 ALCOVE
<i>Or Equal</i>	
Manufacturer: Lumicor Collection & Code: to be selected Finish: to be selected Color: to be selected	
R-2 RESIN Manufacturer: 3-Form Collection & Code: Varia 3/8" Finish: Sandstone Color: Shoreline B37	TICKET COUNTERS
<i>Or Equal</i>	
Manufacturer: Lumicor Collection & Code: Luminous Finish: Sandstone Color: to be selected	
R-3 RESIN Manufacturer: 3-Form Collection & Code: Varia 1/4" Style: Quatro Carbon 2 + Avalanche (D01) Finish: Sandstone	GATE KIOSK BACK WALL
<i>Or Equal</i>	
Manufacturer: Lumicor Collection & Code: Custom Match Finish: Sandstone	

ROOM FINISH LEGEND

MATERIAL FINISH TYPE	TYPICAL MATERIAL TYPE LOCATION, RE: FINISH SCHEDULE FOR ALL LOCATIONS
PLASTIC LAMINATE	
PL-1 PLASTIC LAMINATE Manufacturer: Wilsonart Color: Fossil Shale D504-60 Finish: Matte Finish	GATE BACK SCREEN
<i>Or Equal</i>	
Manufacturer: Formica Color: Mouse Finish: Matte Finish	
RIGID VINYL	
RV-1 RIGID VINYL Manufacturer: Inpro Color: TBD Finish: Standard Thickness: .040" Sheet Size: 4'x8"	EMPLOYEE CORRIDOR
<i>Or Equal</i>	
Manufacturer: CS Acrovyn Color: TBD Finish: Standard Thickness: .040" Sheet Size: 4'x8"	
FIBER REINFORCED PANEL	
FRP-1 FIBER REINFORCED PANEL W/ DIGITAL PRINT Manufacturer: Marlite Collection: Artizan Max Finish: Custom Digital Print	BAGGAGE CLAIM
<i>Or Equal</i>	
Manufacturer: MDC Interior Solutions Product: FRP Panels Finish: Custom Digital Print	
METAL CEILING	
MC-1 METAL CEILING Manufacturer: Armstrong Collection & Code: Metalworks Immix Linear Item Number: 6372AC1 Size: 12" Width Finish: SilverLume	VESTIBULE, ENTRY & ALCOVE
<i>Or Equal</i>	
Manufacturer: USG Collection & Code: Planx Universal Linear Metal Ceiling System Size: 12" Width Finish: Silver Satin	

FINISH SCHEDULE

ROOM #	ROOM NAME	FLOOR	BASE	PLAN NORTH	PLAN EAST	PLAN SOUTH	PLAN WEST	CEILING	REMARKS
100	MAIN LOBBY	-	-	P-1	P-1	P-1	P-1	P-3/MC-1	
100	PARKING STRUCTURE LOBBY	CPT-4	-	-	-	-	-	-	
101	VESTIBULE	CPT-5	-	P-1	P-1	P-1	P-1	MC-1	
102	ALCOVE	-	B-2/STS-3	R-1	P-1	P-1	P-1	P-3/MC-1	
102H	VESTIBULE	-	-	-	-	-	-	ACT-1	
103	GENERAL CIRCULATION	-	-	P-1	P-1	P-1	P-1	P-3/ACT-1	
103A	PJ'S COFFEE	CPT-1/CPT-2	B-2	P-1	P-1	P-1	P-1	P-3/ACT-1	
104	CONFERENCE CENTER	CPT-1/CPT-2	-	P-1	P-1	P-1	P-1	-	
105	INFORMATION CENTER	TZ-1	-	-	-	-	-	P-3	
106	VESTIBULE	CPT-5	-	P-1	P-1	P-1	P-1	-	
111	VESTIBULE	CPT-5	-	P-1	P-1	P-1	P-1	-	
112	BAGGAGE CLAIM	CPT-1	B-2	P-2/FRP-1	P-1	P-1	P-1	P-3/ACT-1	
112A	HALL	CPT-1	-	P-1	P-1	P-1	P-1	ACT-1	
112B	JANITORIAL BREAKROOM	CPT-1	-	P-1	P-1	P-1	P-1	ACT-1	
112C	STORAGE	-	-	P-1	P-1	P-1	P-1	-	
126	GENERAL CIRCULATION	-	-	-	-	-	-	-	
127	VESTIBULE	CPT-5	-	P-1	P-1	P-1	P-1	-	
128	VESTIBULE	CPT-5	-	P-1	P-1	P-1	P-1	-	
130	TICKET COUNTERS	CPT-1/CPT-2	B-2/ STS-3	P-2	P-1	P-1	P-1/SS-2	P-3/ACT-1	PATCH DAMAGED BASE WITH B-1
140	CONCOURSE B- LEVEL 1	CPT-1/CPT-2	-	P-1/WC-1	P-1	P-1/PT-1	P-1	ACT-1	PATCH DAMAGED BASE WITH B-1
180	CAR RENTAL	CPT-1/CPT-2	B-2/ STS-3	P-2	P-1	P-1	P-1	P-3/ACT-1	
181	VESTIBULE	CPT-5	-	-	-	-	-	P-3	
200	PARKING STRUCTURE LOBBY	CPT-5	-	-	-	-	-	-	
204	TSA	CPT-4	B-1	P-1	P-1	P-1	P-1	-	PATCH DAMAGED BASE WITH B-1
213	DEPARTURE LOUNGE	CPT-1/CPT-2	-	P-1	P-1	P-1/PT-1	P-1	P-3/ACT-1	PATCH DAMAGED BASE WITH B-1
214	DEPARTURE LOUNGE	CPT-1/CPT-2	B-1/B-2	P-1	P-1	-	P-1	P-3/ACT-1	PATCH DAMAGED BASE WITH B-1
216	PLAY ROOM	CPT-1	B-2	P-1	-	-	-	-	
216A	READING	CPT-1	B-2	P-1	P-1	P-1	P-1	-	
216B	CHAPEL	CPT-1	B-2	P-1	P-1	P-1	P-1	-	
217	ROTUNDA	CPT-4	-	P-1	P-1	P-1	P-1	-	PATCH DAMAGED BASE WITH B-1
220	BUSINESS CENTER	CPT-1	-	P-1	P-1	P-1	P-1	-	
221	GALLERY	-	-	P-1	P-1	P-1	P-1	-	
230	CORRIDOR	-	-	P-1	P-1	P-1	P-1	P-3	
231	GENERAL CIRCULATION	-	-	P-1	P-1	P-1	P-1	P-3	
235	DEPARTURE LOUNGE	CPT-1/CPT-2	B-1/B-2	-	-	P-1/PT-1	P-1	P-3/ACT-1	PATCH DAMAGED BASE WITH B-1
236	DEPARTURE LOUNGE	CPT-1/CPT-2	B-1/B-2	-	P-1/PT-1/STS-1	-	P-1	P-3/ACT-1	PATCH DAMAGED BASE WITH B-1
237	DEPARTURE LOUNGE	CPT-1/CPT-2	B-1/B-2	-	P-1	P-1	-	P-3/ACT-1	PATCH DAMAGED BASE WITH B-1
238	DEPARTURE LOUNGE	CPT-1/CPT-2	B-1/B-2	P-1	P-1	-	-	P-3/ACT-1	PATCH DAMAGED BASE WITH B-1
239	EMPLOYEE CORRIDOR	CPT-5	B-2	RV-1/P-1	RV-1/P-1	RV-1/P-1	RV-1/P-1	-	WAINSCOTT HEIGHT RIGID VINYL
300	PARKING STRUCTURE LOBBY	CPT-4	-	-	-	-	-	-	
G201	PEDESTRIAN BRIDGE	CPT-3/CPT-4	-	P-1	P-1	P-1	P-1	P-3	
ST-2	STAIR	RB-1	-	-	-	-	-	-	

SYMBOL	DESCRIPTION
	DUPLEX RECEPTACLE WITH INTEGRAL GROUND FAULT CIRCUIT INTERRUPTER
	DUPLEX RECEPTACLE, 20A, 125V, 3W, GROUNDING TYPE.
	QUADRUPLEX RECEPTACLE, 20A, 125V, 3W, GROUNDING TYPE.
	FLUSH-FLOOR, QUADRUPLEX RECEPTACLE, 20A, 125V, 3W, GROUNDING TYPE.
	FLUSH-FLOOR, DUPLEX RECEPTACLE, 20A, 125V, 3W, GROUNDING TYPE.
	EXISTING FLOOR OUTLET WITH DUPLEX RECEPTACLE
	SPECIAL PURPOSE RECEPTACLE
	SIMPLEX RECEPTACLE
	CEILING MOUNTED OUTLET - EXISTING
	CEILING MOUNTED OUTLET
	DISCONNECT OR SAFETY SWITCH
	EXISTING DISCONNECT OR SAFETY SWITCH
	MAGNETIC STARTER
	COMBINATION STARTER/DISCONNECT
	MOTOR (X = HORSEPOWER)
	JUNCTION BOX
	GROUNDING PER 2005 NEC N.E.C. ARTICLE 250
	CONDUIT UP
	CONDUIT DOWN
	NEW PANELBOARD SURFACE MOUNTED
	NEW PANELBOARD RECESSED MOUNTED
	EXISTING PANELBOARD SURFACE MOUNTED
	EXISTING PANELBOARD RECESSED MOUNTED
	DATA OUTLET - # INDICATES QUANTITY OF PORTS
	EXISTING DATA OUTLET - # INDICATES QUANTITY OF PORTS
	COMMUNICATION OUTLET WITH 1" EMPTY CONDUIT TO AN ACCESSIBLE LOCATION ABOVE THE CEILING.
	FLOOR DATA OUTLET WITH 1" EMPTY CONDUIT TO AN ACCESSIBLE LOCATION ABOVE THE CEILING.
	HORN / LOUDSPEAKER
	DATA OUTLET - FLUSH FLOOR (# INDICATES QUANTITY OF PORTS)
	CLOCK
	PA SYSTEM CEILING SPEAKER
	METER
	PUSHBUTTON
	CIRCUIT BREAKER
	ACCESS POINT
	PULL BOX
	TRANSFORMER
	GROUND ROD
	TELEPHONE CABINET
	VARIABLE FREQUENCY DRIVE (FURNISHED BY MECHANICAL, INSTALLED AND CONNECTED BY ELECTRICAL)

*NOTE: NOT ALL SYMBOLS ARE USED.

SYMBOL	DESCRIPTION
	2x4' LIGHTING FIXTURE - (XX - FIXTURE TYPE)
	2x4' LIGHTING FIXTURE WITH BATTERY PACK - (XX - FIXTURE TYPE)
	2x2' LIGHTING FIXTURE - (XX - FIXTURE TYPE)
	2x2' LIGHTING FIXTURE WITH BATTERY PACK - (XX - FIXTURE TYPE)
	4' SURFACE MOUNT LIGHTING FIXTURE - (XX - FIXTURE TYPE)
	2' SURFACE MOUNT LIGHTING FIXTURE - (XX - FIXTURE TYPE)
	4' SURFACE MOUNT LIGHTING FIXTURE - VAPOR TIGHT
	4' WALL MOUNT LIGHTING FIXTURE - SURFACE VANITY LIGHT
	RECESSED CAN LIGHT (XX - FIXTURE TYPE)
	EXIT LIGHT WALL MTD. SHADING DENOTES SIDE WITH FACE.
	EXIT LIGHT CEILING MTD. ARROWS AS NOTED. SHADING DENOTES SIDE WITH FACE.
	EXIT LIGHT WITH EMERGENCY LIGHT - BATTERY BACKUP
	OCCUPANCY SENSOR, CEILING MOUNT
	DAYLIGHT SENSOR
	WALL MOUNTED EMERGENCY LIGHT - BATTERY UNIT
	EXTERIOR WALL PACK - SURFACE MOUNT
	TOGGLE SWITCH, SINGLE POLE
	TOGGLE SWITCH, SUBSCRIPT INDICATES DEVICE CONTROLLED
	SUSPENDED LAY-IN GRID CEILING
	SUSPENDED GYPSUM CEILING
	INTERCOM
	VIDEO SURVEILLANCE CAMERA TO BE DISCONNECTED AND RECONNECTED UPON COMPLETION OF NEW CEILING.
	CARD READER
	ACCESS POINT LOCATION TO BE DISCONNECTED AND RECONNECTED UPON COMPLETION OF NEW CEILING.
	COURTESY PHONE- REMOVE CABLE BACK TO PATCH PANEL AND RELABEL AS SPARE
	EMERGENCY STOP PUSHBUTTON
	CEILING-MOUNTED SPEAKER TO BE DISCONNECTED AND RECONNECTED UPON COMPLETION OF NEW CEILING.
	CONVEYOR BELT FLASHING BEACON LIGHT
	VIDEO DISPLAY/MONITOR TO BE DISCONNECTED AND RECONNECTED UPON COMPLETION OF NEW CEILING, UNLESS NOTED OTHERWISE

*NOTE: NOT ALL SYMBOLS ARE USED.

SYMBOL	DESCRIPTION
	EXPOSED CONDUIT ROUTED ABOVE GRADE
	NON-EXPOSED CONDUIT ROUTED BELOW GRADE
	OVERHEAD NEW
	OVERHEAD EXISTING
	UNDERGROUND EXISTING
	UNDERGROUND NEW CONDUIT
	DUCTBANK
	GROUNDING
	MATCHLINE
	1" C., 3#8 & 1#10G: 1" CONDUIT WITH THREE SIZE 8 CONDUCTORS & ONE SIZE 10 EQUIPMENT GROUND
	XX: PANEL XX = CIRCUIT NUMBER, PANEL = PANEL NAME BEING CIRCUITED TO. PROVIDE BRANCH WIRING BETWEEN DEVICES AND PANELBOARD AS REQUIRED FOR FULL FUNCTIONALITY.
*NOTE: NOT ALL SYMBOLS ARE USED.	
	SECTION LETTER
	DRAWING NOTE
	POINT OF CONNECTION
	DRAWING REVISION NUMBER
	DRAWING REVISION CLOUD
	DETAIL NUMBER
	DRAWING TITLE
	DRAWING SCALE

ABBREVIATION	DESCRIPTION
A	AMPERE
ABC	ABOVE COUNTER
AC	ALTERNATING CURRENT
AF	AMPERE FUSE
AFF	ABOVE FINISHED FLOOR
AHU	AIR HANDLING UNIT
KAIC	KILOAMPERE INTERRUPTING CAPACITY
ANN	ANNUNCIATOR
APPROX	APPROXIMATE
ARCH	ARCHITECT
ATS	AUTOMATIC TRANSFER SWITCH
AWG	AMERICAN WIRE GAUGE
BLDG	BUILDING
C	CONDUIT
CB	CIRCUIT BREAKER
CKT	CIRCUIT
CLG	CEILING
CL	CENTER LINE
CT	CURRENT TRANSFORMER
CU	COPPER
DH	INCLUDES DAYLIGHT HARVESTING DISCONNECT
DISC	DOWN
DWG	DRAWING
EACH	EACH
EA	EMPTY CONDUIT WITH PULL WIRE
EC	EXHAUST FAN
EF	ELEVATOR
ELEV	ELEVATOR
EP	EXPLOSION-PROOF EQUIPMENT
EQPT	EQUIPMENT
EX	EXISTING
FCU	FAN COIL UNIT
FLA	FULL LOAD AMPS
FLR	FLOOR
GFI	GROUND FAULT INTERRUPTER
GND	GROUND
HP	HORSE POWER
HW	HOT WATER
HWC	HOT WATER CIRCULATING
JB	JUNCTION BOX
KB	KILOVOLT
KVA	KILOVOLT-AMPERE
KW	KILOWATT
LTG	LIGHTING
MAX	MAXIMUM
MCB	MAIN CIRCUIT BREAKER
MCC	MOTOR CONTROL CENTER
MCM	CIRCULAR MILS, THOUSANDS
MECH	MECHANICAL
MFG	MANUFACTURER
MGAP	MEDICAL GAS ALARM PANEL
MLO	MAIN LUGS ONLY
MTD	MOUNTED
MTG	MOUNTING
NEC	NATIONAL ELECTRICAL CODE
NTS	NOT TO SCALE
PNL	PANEL
PH	PHASE
P	MARINE SHIPBOARD CABLE
RECP	RECEPTACLE
REFRIG	REFRIGERATOR
REQD	REQUIRED
SN	SOLID NEUTRAL
SPKR	SPEAKER
SPEC	SPECIFICATION
SWBD	SWITCHBOARD
SWGR	SWITCHGEAR
TEL	TELEPHONE
TTB	TELEPHONE TERMINAL BOARD
TV	TELEVISION
TVSS	TRANSIENT VOLT. SURGE SUPPRESSOR
TYP	TYPICAL
UC	UNDER COUNTER
V	VOLT
VA	VOLT-AMPERE
W	WATT
WH	WATT-HOUR
WP	WEATHER-PROOF
W/	WITH
W/O	WITHOUT
XFMR	TRANSFORMER

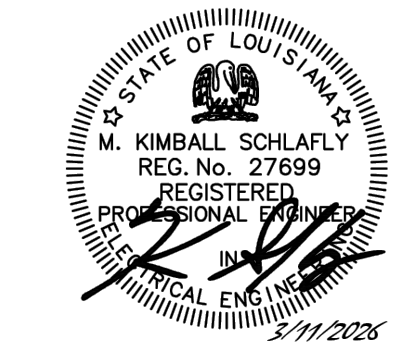
*NOTE: NOT ALL SYMBOLS ARE USED.

ELECTRICAL GENERAL NOTES	
1.	ALL WORK SHALL BE IN ACCORDANCE WITH THE VERSION OF THE NATIONAL ELECTRICAL CODE PRESENTLY IN USE BY EAST BATON ROUGE PARISH. WORKMANSHIP SHALL BE OF THE HIGHEST QUALITY. ANY WORK JUDGED SUBSTANDARD BY THE OWNER OR THE ENGINEER SHALL BE REDONE AT THE CONTRACTOR'S EXPENSE. CONTRACTOR SHALL OBTAIN AND PAY FOR ALL NECESSARY PERMITS, INSPECTIONS, AND FEES.
2.	ELECTRICAL PLANS SHOW GENERAL WORK TO BE PERFORMED BY CONTRACTOR AND HAVE BEEN PREPARED TO ASSIST THE CONTRACTOR IN PREPARING PROPOSED COST FOR THE TOTAL PROJECT. IT IS THE RESPONSIBILITY OF THE CONTRACTOR TO VISIT THE JOB SITE AND BECOME FAMILIAR WITH EXISTING CONDITIONS WHICH MAY AFFECT HIS WORK AND FINAL BID PRICE.
3.	CONTRACTOR SHALL FURNISH "AS-BUILT" DRAWINGS OF ALL VARIATIONS OF CONSTRUCTION DOCUMENTS TO OWNER, UPON COMPLETION OF PROJECT.
4.	PROVIDE ALL REQUIRED AND NECESSARY UNISTRUT SUPPORTS FOR ALL ELECTRICAL EQUIPMENT.
5.	DISCONNECT SWITCHES, MOTOR STARTERS, CONTROLLERS, ETC., SERVING MECHANICAL EQUIPMENT SHALL BE MOUNTED TO UNISTRUT RACKS. FOR MOUNTING EQUIPMENT THERETO, UNLESS OTHERWISE SPECIFIED, UNISTRUT INSTALLED IN DAMP OR WET LOCATIONS SHALL BE HOT DIPPED GALVANIZED. MOUNT EQUIPMENT SO THAT AN AIR SPACE OF 1" MIN. IS MAINTAINED FROM ANY SURFACES.
6.	ALL DISCONNECT SWITCHES SHALL BE FUSIBLE, HEAVY DUTY, WITH EXTERIOR OPERATING HANDLE AND REJECTION CLIPS TO ACCEPT ONLY THE PROPER FUSE CLASS. DISCONNECT SWITCHES SHALL BE RATED EITHER 250 OR 600 VOLTS AS REQUIRED FOR THE SYSTEM VOLTAGE. AMPERE RATINGS AND NUMBER OF POLES IS INDICATED ON THE DRAWINGS. FUSE PER EQUIPMENT MANUFACTURER'S REQUIREMENTS.
7.	ALL FUSES ON PROJECT TO BE OF THE SAME MANUFACTURER. ALL FUSES IN EACH INDIVIDUAL DISCONNECT SWITCH SHALL BE OF THE SAME IDENTICAL TYPE, AMPERAGE, VOLTAGE RATING. ALL FUSES SHALL BE INSTALLED RIGHT SIDE UP AND WITH THE AMPERAGE LABEL FACING OUT. FUSES OUTDOORS OR IN WET LOCATIONS SHALL BE INSTALLED USING OXIDATION INHIBITING COMPOUND, (PENETROX OR EQUAL), IN ALL FUSE HOLDERS.
8.	ALL CONNECTIONS OUTDOORS OR IN WET LOCATIONS SHALL BE MADE USING OXIDATION INHIBITING COMPOUND, PENETROX OR APPROVED EQUAL. THIS INCLUDES POWER AND GROUNDING CONNECTIONS INSIDE PANELS, WIREWAYS, BOXES, DISCONNECT SWITCHES ELECTRICAL AND MECHANICAL EQUIPMENT, ETC.
9.	LABEL ALL DEVICES WITH PANEL DESIGNATION, CIRCUIT NUMBER AND VOLTAGE INCLUDING JUNCTION/OUTLET BOXES WITH BLANK FACEPLATES. ELECTRICAL EQUIPMENT, DISCONNECT SWITCHES, MOTOR STARTERS, PANELS, ETC., SHALL BE LABELED WITH ENGRAVED FACEPLATES. SEE ELECTRICAL SPECIFICATIONS.
10.	EVERY RACEWAY ON THE PROJECT SHALL CONTAIN A GREEN INSULATED COPPER GROUND CONDUCTOR. THIS INCLUDES FIXTURE WHIPS SERVING LIGHTING FIXTURES, MAIN SERVICE SWITCH, PANELS, PANEL FEEDERS, AND WIREWAYS SHALL BE PROVIDED WITH INSULATED GROUNDING BUSHINGS WITH EQUIPMENT GROUNDING CONDUCTOR BONDED TO ELECTRICAL EQUIPMENT AND EQUIPMENT GROUND BUS.
11.	ALL CONDUIT AND BOXES SHALL BE SECURED TO, AND SUPPORTED FROM, THE BUILDING STRUCTURE. DO NOT WELD, DRILL OR CUT ANY STRUCTURAL MEMBERS. DO NOT USE WIRES, PIPES, CEILING GRID, DUCTWORK, ETC TO SECURE OR SUPPORT CONDUIT, SPECIAL SYSTEM CABLING, OR BOXES.
12.	MAINTAIN NATIONAL ELECTRICAL CODE WORKING CLEARANCES AROUND ALL ELECTRICAL EQUIPMENT INSTALLED ON THIS PROJECT.
13.	ALL CONDUIT, BOTH CONCEALED AND EXPOSED, SHALL BE RUN AT 90 DEGREE ANGLES, PARALLEL AND PERPENDICULAR TO BUILDING LINES, EXCEPT FOR OFFSETS AND DOGLEGS AS REQUIRED. CONDUIT SIZE SHALL BE 3/4" UNLESS SHOWN OTHERWISE. CONDUIT EXPOSED TO WEATHER OR SUBJECT TO SEVERE DAMAGE SHALL BE RIGID GALVANIZED STEEL. CONDUIT NOT EXPOSED TO WEATHER OR SEVERE DAMAGE SHALL BE EMT. FLEXIBLE METAL CONDUIT SHALL BE USED FOR FINAL CONNECTIONS TO VIBRATING EQUIPMENT. SEALTIGHT SHALL BE USED IN WET LOCATIONS.
14.	THE CONTRACTOR SHALL COORDINATE THE LOCATION OF THE DISCONNECTING MEANS WITH THE ACTUAL CONNECTION POINTS OF THE EQUIPMENT SERVED. DO NOT MOUNT DISCONNECTS DIRECTLY TO EQUIPMENT, UNLESS APPROVED BY THE MANUFACTURER. PROVIDE UNISTRUT AS REQUIRED FOR MOUNTING. ALL FINAL CONNECTIONS TO EQUIPMENT SHALL BE MADE USING AN 18" TO 36" SECTION OF FLEXIBLE SEALTIGHT CONDUIT.
15.	ALL EXTERIOR RECEPTACLE OUTLETS SHALL BE WEATHERPROOF/GFCI TYPE, WITH WEATHERPROOF, WHILE-IN-USE, GASKETED COVER PLATES, WHETHER SPECIFICALLY INDICATED OR NOT ON DRAWINGS. PROVIDE LOCKABLE RECEPTACLES IN AREAS ACCESSIBLE TO THE PUBLIC.
16.	WHERE OVERSIZED CONDUITS OR CONDUCTORS ARE INDICATED, THE CONDUIT AND WIRE SIZE SHALL BE MAINTAINED/INSTALLED THROUGHOUT THE ENTIRE CIRCUIT.
17.	COORDINATE MOUNTING HEIGHTS OF ALL WALL MOUNTED EQUIPMENT, WIRING DEVICES, ETC., WITH ARCHITECTURAL, MECHANICAL, AND VENDOR DRAWINGS PRIOR TO START OF ROUGH-IN PHASE OF WORK.
18.	ALL MATERIALS FURNISHED SHALL BE NEW AND U. L. LISTED FOR APPROPRIATE APPLICATIONS.
19.	ALL FINAL ELECTRICAL TERMINATIONS TO MECHANICAL EQUIPMENT SUBJECT TO VIBRATION/MOVEMENT SHALL BE MADE WITH LIQUID TIGHT FLEXIBLE METALLIC/NON-METALLIC CONDUIT WITH APPROVED FITTINGS.
20.	ALL COSTS ASSOCIATED WITH TEMPORARY UTILITY POWER SUPPLY, ACCESS, CONNECTIONS, USAGE AND REMOVAL SHALL BE INCLUDED AND COVERED BY THE GENERAL CONTRACTOR.
21.	ALL EXPOSED, NEW CONDUIT SHALL BE PAINTED TO MATCH THE STRUCTURE FASTENED THERETO.
22.	CONDUITS RUN UNDERGROUND SHALL BE PVC AND SHALL BE CONCRETE ENCASED WHERE INDICATED.

ELECTRICAL GENERAL NOTES	
23.	REFERENCE ARCHITECTURAL PLANS FOR PROJECT PHASING. CONTRACTOR SHALL MAINTAIN CIRCUIT CONTINUITY AND PROPER OPERATION OF LIGHTING RECEPTACLES, AND TELECOMMUNICATIONS TO ALL AREAS OUTSIDE OF THE SPECIFIC SCOPE OF AREA IN EACH PHASE. PROVIDE TEMPORARY WIRING AS REQUIRED. REMOVE UPON COMPLETION OF EACH PHASE.
24.	THE REMOVAL AND RE-INSTALLATION OF THE EXISTING PUBLIC ADDRESS SYSTEM SPEAKERS, COMPONENTS AND WIRING SHALL BE PERFORMED BY THE OWNER'S CONTRACTOR AND IS NOT WITHIN THIS SCOPE OF WORK. THIS WILL OCCUR IN AREAS WHERE THE CEILING ARE BEING REPLACED. CONTRACTOR SHALL PROVIDE COORDINATION WITH OWNER'S CONTRACTOR TO ENSURE THAT THE REMOVAL AND RE-INSTALLATION OF THE PA SYSTEM SPEAKERS, COMPONENTS AND WIRING ARE PERFORMED APPROPRIATELY AND IN A TIMELY MANNER. NOTE: THE PUBLIC ADDRESS SYSTEM SPEAKERS ARE GREEN AND THE PAGING CABLES ARE PURPLE.
25.	IT IS THE CONTRACTOR'S RESPONSIBILITY TO VERIFY ALL EXISTING CONDITIONS. THIS INCLUDES EXISTING CIRCUITRY WHICH IS REQUIRED TO BE REWORKED/EXTENDED AND/OR NEW PROVIDED, EXISTING CONDITIONS RELATED TO INSTALLATION OF NEW WORKING, ETC. ANY DISCREPANCIES AND/OR POSSIBLE ISSUES SHALL BE BROUGHT TO THE ATTENTION OF THE ARCHITECT/ENGINEER PRIOR TO INSTALL.
26.	NO INSTALLATION WILL BE CONSIDERED COMPLETE UNTIL THE OPERATION OF ALL ELECTRICAL EQUIPMENT/ITEMS HAS BEEN DEMONSTRATED TO THE SATISFACTION OF THE OWNER OR ITS AUTHORIZED REPRESENTATIVE. ALSO PROVIDE A COMPLETE SET OF THE DRAWINGS USED STRICTLY FOR MARKUPS WHICH SHALL INCLUDE ALL REVISIONS, SKETCHES, ETC., REQUIRED DURING CONSTRUCTION. CONTRACTOR SHALL INSURE THAT ALL CIRCUITRY IS SHOWN AS WIRED IN THE FIELD AND HAS ACCURATE HOMERUN DESIGNATIONS. THE CONTRACTOR SHALL MARK THESE DRAWINGS IN RED FOR ADDITIONS AND GREEN FOR DELETIONS TO INDICATE EXACT AS INSTALLED CONDITIONS.

BATON ROUGE TERMINAL INTERIOR UPGRADES

9430 Jackie Cochran Dr. Baton Rouge, LA 70811



washer hill lipscomb
cabanis architecture, llc
copyright 2023

1744 oakdale dr
t. 225.767.1530
www.whlarchitecture.com

100% CD
03.11.2026
23-027

ADDENDUM #2 05.01.2026

ELECTRICAL SYMBOLS AND ABBREVIATIONS

MCA
Engineering & Construction
BATON ROUGE - NEW ORLEANS

JOB NO: BRA23010
BC: 802
PROJECT MANAGER: KIMBALL SCHLAFLY

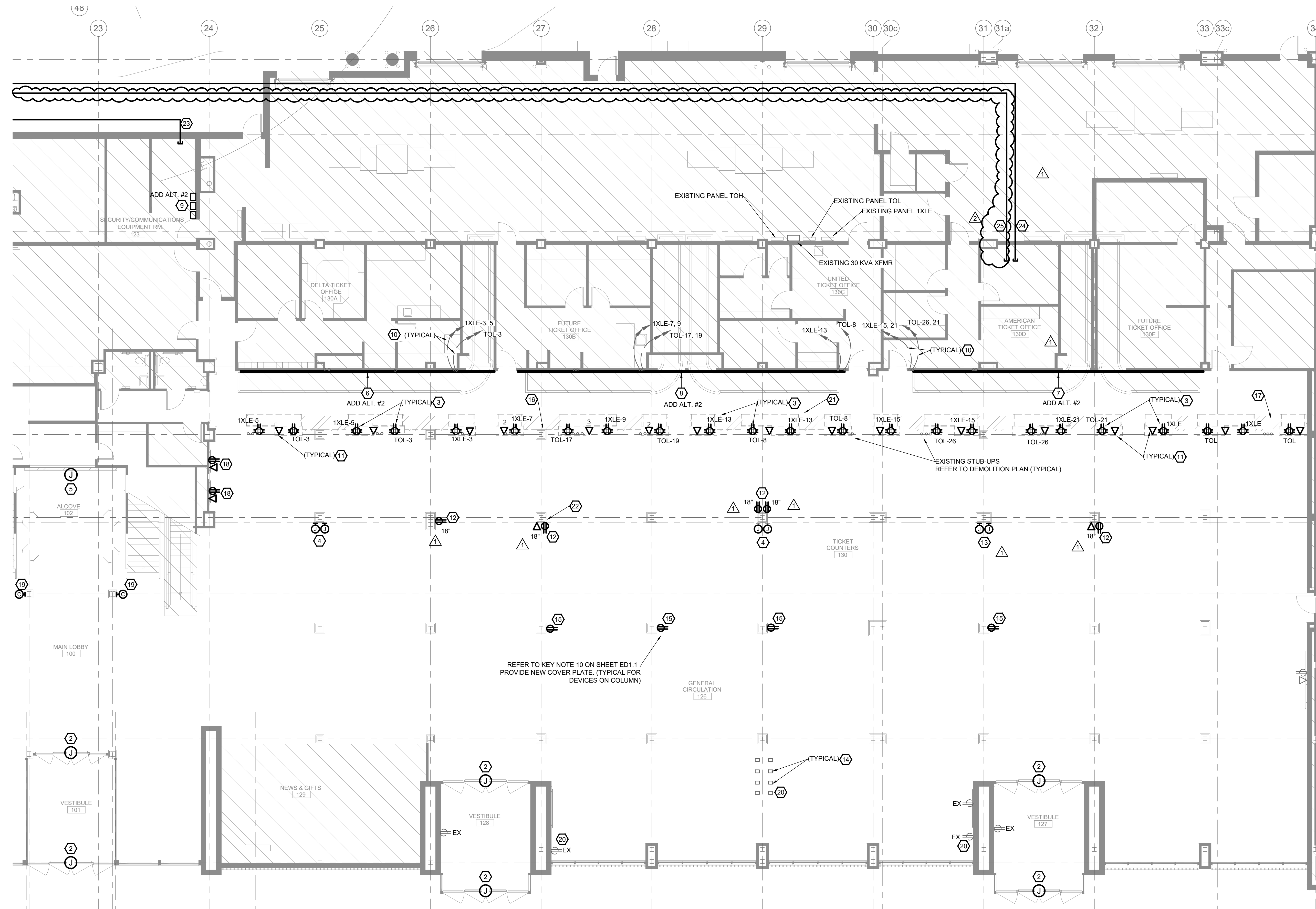
E0.0

GENERAL NOTES:

- A. ALL WORK SHALL BE IN COMPLIANCE WITH THE CURRENT VERSION OF THE NATIONAL ELECTRICAL CODE ADOPTED BY EAST BATON ROUGE PARISH.
- B. REFER TO SHEETS E1.0 AND E2.0 FOR PANELBOARD LOCATIONS.
- C. ELECTRICAL CONTRACTOR SHALL COORDINATE WITH THE GENERAL CONTRACTOR FOR THE REINSTALLATION OF ALL DEVICES LOCATED ON COLUMNS WITH NEW WRAPPING. REFER TO ARCHITECTURAL PLANS FOR ADDITIONAL INFORMATION.

KEY NOTES:

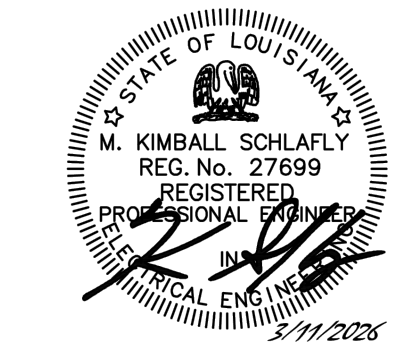
- 1 COORDINATE EXACT LOCATION WITH EQUIPMENT SUPPLIER.
- 2 CONNECT NEW AUTOMATIC DOOR SYSTEM FOR POWER UTILIZING EXISTING POWER CIRCUIT FEEDING EXISTING AUTOMATIC DOOR SYSTEM BEING REMOVED.
- 3 COORDINATE EXACT LOCATION OF RECEPTACLES WITH MILLWORK SUPPLIER/AIRLINE REPRESENTATIVE PRIOR TO ROUGH-IN. PROVIDE CIRCUITING AS SHOWN AND ROUTE CONCEALED IN MILLWORK AND THEN IN SLAB TO ABOVE CEILING.
- 4 REPOSITION EXISTING DEVICES FOR POWER AND DATA SO THAT BACK BOX IS FLUSH WITH NEW COLUMN WRAP. ENSURE DEVICES ARE SECURE IN COLUMN. FINAL CONNECTIONS TO KIOSKS TO BE PROVIDED BY AIRLINE. COORDINATE POWER CONNECTIONS WITH AIRLINE'S REPRESENTATIVE.
- 5 PROVIDE JUNCTION BOX FOR CONNECTIONS TO NEW BACKLIT RESIN WALL FEATURE. EXTEND NEARBY EXISTING CIRCUIT FOR VENDING MACHINES BEING REMOVED.
- 6 SEE DETAIL 2 ON SHEET E15.2 FOR DIGITAL DISPLAY ELEVATION INCLUDING ALL POWER AND DATA REQUIREMENTS.
- 7 SEE DETAIL 3 ON SHEET E15.2 FOR DIGITAL DISPLAY ELEVATION INCLUDING ALL POWER AND DATA REQUIREMENTS.
- 8 SEE DETAIL 4 ON SHEET E15.2 FOR DIGITAL DISPLAY ELEVATION INCLUDING ALL POWER AND DATA REQUIREMENTS.
- 9 DIGITAL DISPLAY CONTROL CABINET FOR EACH DIGITAL DISPLAY TO BE LOCATED IN ROOM 123. VERIFY EXACT LOCATION AND REQUIREMENTS PRIOR TO ANY ROUGH-IN. PROVIDE 120V POWER FOR CABINET.
- 10 EXTEND/REWORK/PROVIDE NEW CONDUIT WIRING AS NEEDED TO CONNECT TICKET COUNTER CIRCUITS AS SHOWN.
- 11 COORDINATE EXACT LOCATION AND NUMBER OF DATA CONNECTIONS WITH MILLWORK SUPPLIER/AIRLINE REPRESENTATIVE PRIOR TO ROUGH-IN. ROUTE CAT6 CONNECTIONS CONCEALED IN MILLWORK AND THEN IN SLAB TO ABOVE CEILING BACK TO DEMARCATION POINT/SWITCH UNIT AS DIRECTED BY THE AIRLINE'S REPRESENTATIVE.
- 12 EXTEND/REWORK/PROVIDE NEW WIRING TO NEW DEVICES AS NEEDED. MAINTAIN EXISTING CIRCUITING.
- 13 PROVIDE 4"x4" JUNCTION BOXES AS SHOWN, ONE FOR POWER AND ONE FOR DATA CONNECTIONS. EXTEND/REWORK/PROVIDE NEW WIRING AS NEEDED TO EXTEND CIRCUITS TO JUNCTION BOX FOR AIRLINE CONNECTIONS TO KIOSKS. MAINTAIN EXISTING CIRCUITING. PROVIDE PULL STRING FROM JUNCTION BOX FOR DATA TO ABOVE CEILING FOR DATA CONNECTIONS TO KIOSKS. COORDINATE WITH AIRLINE REPRESENTATIVE PRIOR TO ROUGH-IN.
- 14 PROVIDE NEW METAL COVER PLATE FOR FLOOR BOX. COORDINATE WITH NEW FINISH FLOOR. COVER PLATE FINISH AS SELECTED BY ARCHITECT.
- 15 REPOSITION EXISTING DEVICES SO THAT BACK BOX IS FLUSH WITH NEW COLUMN WRAP. ENSURE DEVICES ARE SECURE IN COLUMN. PROVIDE NEW COVER PLATE. COVER PLATES ON STAINLESS STEEL COLUMN WRAP TO MATCH FINISH, TYPICAL.
- 16 PROVIDE TEMPORARY TELCO CABLES, (6) CAT6, FROM DELTA AIRLINES TELCO TO COUNTER AS SHOWN. ROUTE CABLING OVERHEAD AND TEMPORARILY FASTEN TO COLUMN. PROVIDE RJ45 FEMALE JACKS ON CABLES AND PROVIDE SLACK AS DIRECTED BY DELTA TO CONNECT THEIR EQUIPMENT. UPON COMPLETION OF WORK IN PHASE 1A REMOVE CABLES.
- 17 PROVIDE TEMPORARY TELCO CABLES, (6) CAT6, FROM AMERICAN AIRLINES TELCO TO COUNTER AS SHOWN. ROUTE CABLING OVERHEAD AND TEMPORARILY FASTEN TO COLUMN/WALL. PROVIDE RJ45 FEMALE JACKS ON CABLES AND PROVIDE SLACK AS DIRECTED BY AMERICAN AIRLINE TO CONNECT THEIR EQUIPMENT. UPON COMPLETION OF WORK IN PHASE 1B REMOVE CABLES.
- 18 PROVIDE NEW RECEPTACLE AND DATA JACK LOCATED AS REQUIRED BY DISPLAY INSTALLER. PROVIDE MC CABLE EXTENSION FROM CEILING ABOVE. PROVIDE NEW DATA JACK AND FACE PLATE ON TO EXISTING CABLE.
- 19 COORDINATE INSTALLATION OF EXISTING CLOCK WITH NEW COLUMN WRAP.
- 20 EXISTING RECEPTACLE TO BE UTILIZED FOR FURNITURE POWER.
- 21 PROVIDE TEMPORARY TELCO CABLES, (6) CAT6, FROM UNITED AIRLINES TELCO TO LOCATION AS SHOWN FOR TEMPORARY LOCATION OF KIOSKS. ROUTE CABLING OVERHEAD AND TEMPORARILY FASTEN TO COLUMN. PROVIDE (3) TEMPORARY DUPLEX RECEPTACLES MOUNTED TO COLUMN AND CIRCUITED TO 20A/1P CIRCUIT BREAKER IN EXISTING PANEL 1XLE. KIOSKS AND CONNECTIONS TO EQUIPMENT WILL BE PROVIDED BY AIRLINE. REMOVE RECEPTACLES, ASSOCIATED WIRING AND TELCO CABLES UPON COMPLETION OF WORK IN PHASE 1A.
- 22 PROVIDE TEMPORARY TELCO CABLES, (6) CAT6, FROM DELTA AIRLINES TELCO TO LOCATION AS SHOWN FOR TEMPORARY LOCATION OF KIOSKS. ROUTE CABLING OVERHEAD AND TEMPORARILY FASTEN TO COLUMN. PROVIDE (3) TEMPORARY DUPLEX RECEPTACLES MOUNTED TO COLUMN AND CIRCUITED TO 20A/1P CIRCUIT BREAKER IN EXISTING PANEL 1XLE. KIOSKS AND CONNECTIONS TO EQUIPMENT WILL BE PROVIDED BY AIRLINE. REMOVE RECEPTACLES, ASSOCIATED WIRING AND TELCO CABLES UPON COMPLETION OF WORK IN PHASE 1A.
- 23 OVERHEAD FIBER CABLE IN CONDUIT ROUTED FROM RACK IN STORAGE RM TO SECURITY/COMMUNICATIONS ROOM. COORDINATE ROUTING AND CONNECTIONS WITH AIRPORT'S IT DEPARTMENT. SEE KEY NOTE 13 ON SHEET E1.2
- 24 OVERHEAD FIBER CABLE IN CONDUIT ROUTED FROM RACK IN IT RM 143 TO MDF RACK FOR AMERICAN AIRLINE. REFER TO KEY NOTE 18 ON SHEET E2.2
- 25 OVERHEAD COAXIAL CABLE IN CONDUIT ROUTED FROM RADIO EQUIPMENT IN IT RM 143 TO MDF RACK FOR AMERICAN AIRLINE. REFER TO KEY NOTE 20 ON SHEET E2.2



SCALE 1/8" = 1'-0"
LEVEL 1 - TICKET COUNTERS NEW PLAN

MCA
Engineering & Construction
BATON ROUGE, NEW ORLEANS

JOB NO: BRA23010
BG: 802
PROJECT MANAGER: KIMBALL SCHLAFLY

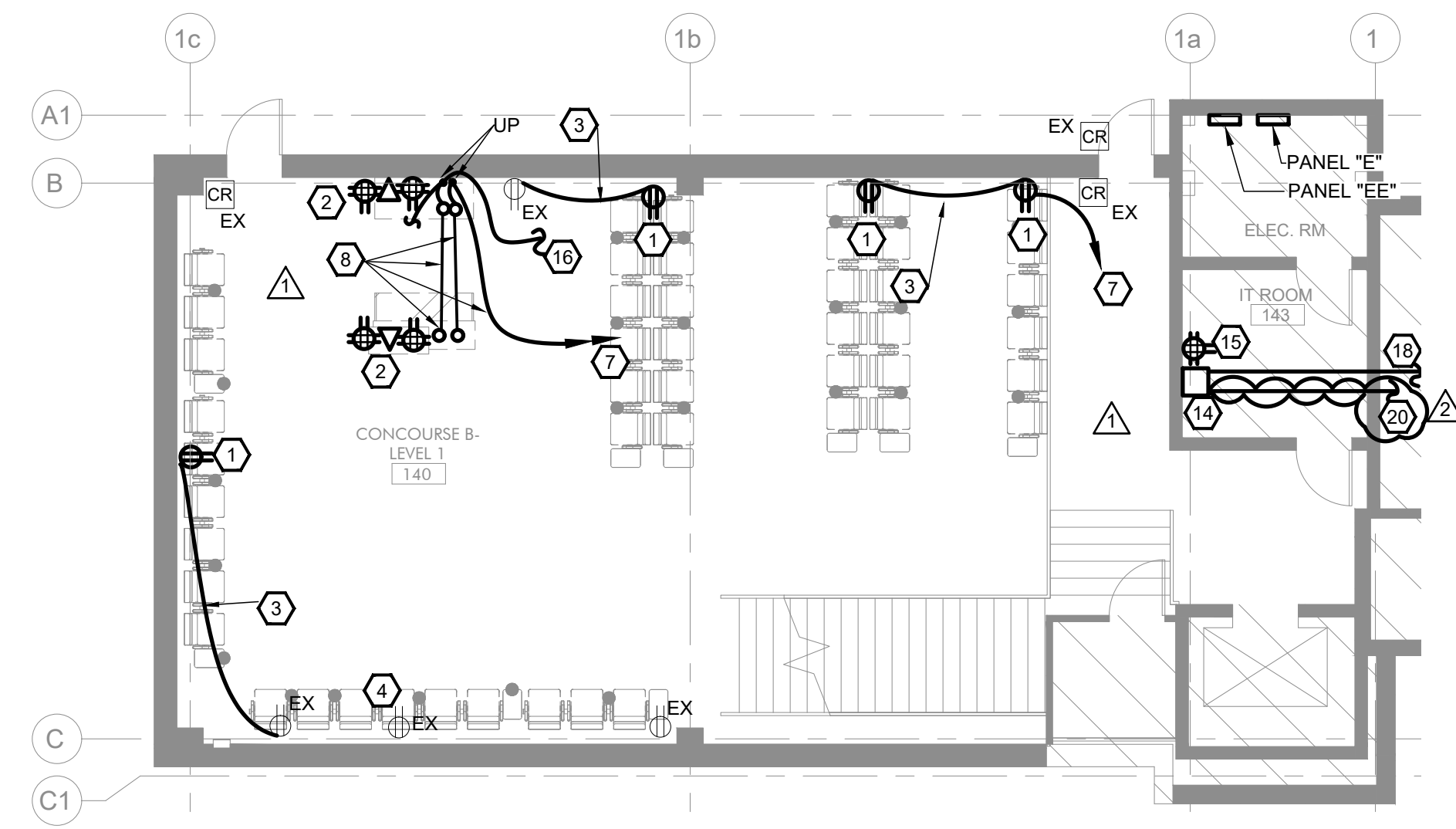


1744 oakdale dr
t. 225.767.1530
www.whlarchitecture.com

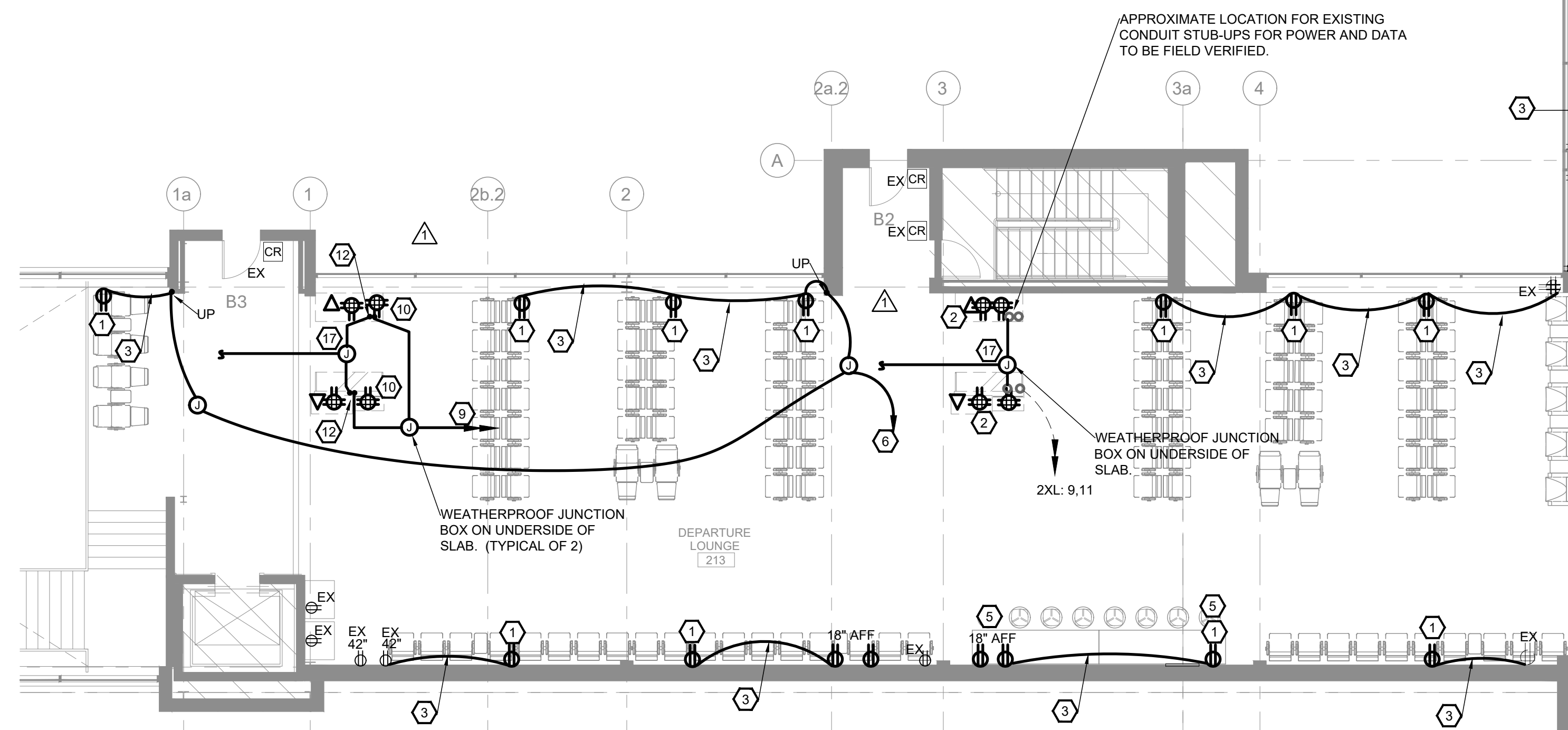
baton rouge, la
t. 225.767.0018
www.whlarchitecture.com

100% CD	03.11.2026
23-027	04.27.2026
1 ADDENDUM #01	04.27.2026
2 ADDENDUM #01	05.01.2026

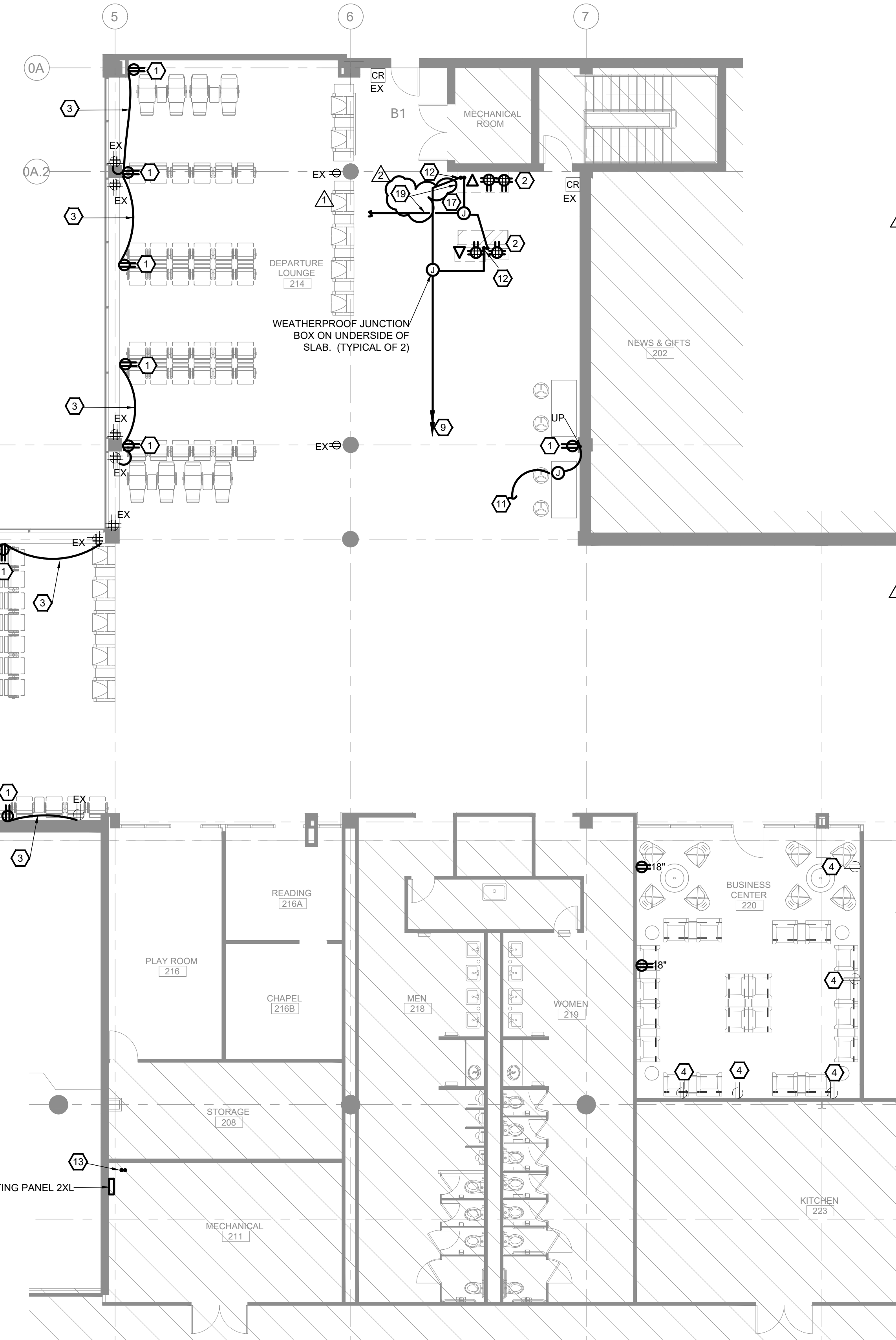
LEVEL 1 - TICKET COUNTERS
NEW PLAN



2 SCALE 1/8" = 1'-0" LEVEL 1 - CONCOURSE B (B4-B5) NEW PLAN



1 SCALE 1/8" = 1'-0" LEVEL 2 - CONCOURSE B NEW PLAN



GENERAL NOTES:

- A. ALL WORK SHALL BE IN COMPLIANCE WITH THE CURRENT VERSION OF THE NATIONAL ELECTRICAL CODE ADOPTED BY EAST BATON ROUGE PARISH.
- B. REFER TO SHEETS E1.0 AND E2.0 FOR PANELBOARD LOCATIONS.

KEY NOTES:

- 1 PROVIDE DUPLEX RECEPTACLE FOR POWER CONNECTIONS TO UNDER TABLE RECEPTACLES PROVIDED WITH SEATING/TABLE. COORDINATE ANY REQUIRED PATCHING AND PAINTING OF EXISTING FINISHES REQUIRED WITH GENERAL CONTRACTOR.
- 2 COORDINATE EXACT LOCATION AND REQUIREMENTS OF POWER AND DATA CONNECTIONS WITH MILLWORK/ AIRLINE'S REPRESENTATIVE PRIOR TO INSTALL. COORDINATE LOCATION OF NEW MILLWORK WITH EXISTING LOCATION OF STUB-UPS.
- 3 ROUTE MC CABLE IN WALL. COORDINATE ANY REQUIRED PATCHING AND PAINTING OF EXISTING FINISHES REQUIRED WITH GENERAL CONTRACTOR.
- 4 EXISTING RECEPTACLE TO BE UTILIZED FOR POWER FOR NEW FURNITURE. FURNITURE IS PROVIDED WITH CORD AND PLUG.
- 5 COORDINATE INSTALLATION OF DEVICES WITH TILE PANELING. PROVIDE BLACK COVER PLATES.
- 6 PROVIDE 20A/1P CIRCUIT BREAKER IN EXISTING PANEL 2XL AND CONNECT CIRCUIT THERETO.
- 7 PROVIDE 20A/1P CIRCUIT BREAKER IN EXISTING PANEL EE AND CONNECT CIRCUIT THERETO.
- 8 PROVIDE (2) STUB-UPS AS SHOWN, (2) 3/4" PVC CONDUITS (ONE FOR POWER AND ONE FOR DATA WITH FULL STRING). STUB-UP CONDUITS AS SHOWN. ROUTE MC CABLE UP WALL AND THEN OVERHEAD TO PANEL EE. SAW CUT SLAB AS REQUIRED. SLAB SHALL BE X-RAYED PRIOR TO INSTALLATION AND SAW CUTTING OF SLAB. COORDINATE EXACT LOCATION OF STUB-UPS WITH NEW KIOSK/MILLWORK LOCATION, SLAB CONDITIONS, THE ARCHITECT AND AIRLINE'S REPRESENTATIVE IN THE FIELD PRIOR TO INSTALLATION.
- 9 ROUTE 4 #8s AND 2 #10 GND, 3/4" PVC ATTACHED TO UNDERSIDE OF SLAB TO PANEL 2XL. CONNECT TO EXISTING CIRCUIT BREAKERS IN PANEL "2XL" PREVIOUSLY SERVING KIOSKS. IF THE CIRCUITS WERE COMBINED WITH ANOTHER GATE LOCATION PROVIDE ADDITIONAL 20A/1P CIRCUIT BREAKERS IN PANEL AND CONNECT THERETO. EACH GATE LOCATION TO HAVE A MINIMUM OF (2) 20A/1P CIRCUITS AS SHOWN. EXACT ROUTING OF CIRCUITS ON UNDERSIDE OF SLAB SHALL BE DETERMINED IN THE FIELD AND COORDINATED WITH EXISTING CONDITIONS AND AIRPORT'S REPRESENTATIVE.
- 10 COORDINATE EXACT LOCATION AND REQUIREMENTS OF POWER AND DATA CONNECTIONS WITH MILLWORK/ AIRLINE'S REPRESENTATIVE PRIOR TO INSTALL.
- 11 CONNECT TO NEAREST ADEQUATE 20A CIRCUIT IN AREA SERVING RECEPTACLES.
- 12 PROVIDE (2) STUB-UPS AS SHOWN, (2) 3/4" PVC CONDUITS (ONE FOR POWER AND ONE FOR DATA WITH FULL STRING). STUB-UP CONDUITS AS SHOWN. CORE DRILL SLAB AS REQUIRED. SLAB SHALL BE X-RAYED PRIOR TO CORE DRILLING OF SLAB. VERIFY EXACT LOCATION OF CORE DRILLS WITH EXISTING CONDITIONS ON THE UNDERSIDE OF SLAB. LOCATION OF NEW AIRLINE KIOSKS/MILLWORK ON LEVEL 2 AND FINDINGS FROM SLAB X-RAY. CONTRACTOR SHALL PROVIDE DIMENSIONED DRAWINGS INDICATING LOCATIONS OF CORE DRILLING AND SUBMIT TO ARCHITECT FOR APPROVAL PRIOR TO INSTALLATION.
- 13 PROVIDE (2) STUB-UPS AS SHOWN, (2) 3/4" PVC CONDUITS FOR POWER CIRCUITS. STUB-UP CONDUITS AS SHOWN. CORE DRILL SLAB AS REQUIRED. SLAB SHALL BE X-RAYED PRIOR TO CORE DRILLING OF SLAB. VERIFY EXACT LOCATION OF CORE DRILLS WITH EXISTING CONDITIONS ON THE UNDERSIDE OF SLAB. EXISTING CONDITIONS IN ELECTRICAL ROOM AND FINDINGS FROM SLAB X-RAY. CONTRACTOR SHALL PROVIDE DIMENSIONED DRAWINGS INDICATING LOCATIONS OF CORE DRILLING AND SUBMIT TO ARCHITECT FOR APPROVAL PRIOR TO INSTALLATION.
- 14 NEW LOCATION OF EXISTING AMERICAN AIRLINE'S SWITCH AND RADIO EQUIPMENT. COORDINATE EXACT LOCATION OF SAME WITH EXISTING IT ROOM EQUIPMENT AND AA'S/AIRPORT'S IT REPRESENTATIVE.
- 15 PROVIDE QUAD RECEPTACLE AND CONNECT TO AVAILABLE 20A CIRCUIT NOW SERVING IT EQUIPMENT ROOM. ENSURE CIRCUIT DOES NOT EXCEED 1600 VA.
- 16 PROVIDE (8) CAT6 CABLES TO IT ROOM 143. CABLES TO BE SHARED BETWEEN GATE KIOSKS. PROVIDE 6' OF SLACK FOR CONNECTIONS TO SWITCH BY AA/AIRPORT'S IT REPRESENTATIVE. COORDINATE EXACT NUMBER OF CABLES WITH AIRLINE AND IT REPRESENTATIVES PRIOR TO INSTALLATION.
- 17 PROVIDE (8) CAT6 CABLES ROUTED TO IT ROOM 143. CABLES TO BE SHARED BETWEEN GATE KIOSKS. PROVIDE 6' OF SLACK FOR CONNECTIONS TO SWITCH BY AA'S IT REPRESENTATIVE. COORDINATE EXACT NUMBER OF CABLES WITH AA'S IT REPRESENTATIVE PRIOR TO INSTALLATION. CABLES TO BE ROUTED IN 1 1/2" CONDUIT ROUTED ON UNDERSIDE OF SLAB. VERIFY EXACT ROUTING IN THE FIELD WITH EXISTING CONDITIONS OF UNDERSIDE OF SLAB AND ABOVE CEILINGS, AND AIRLINE'S REPRESENTATIVE PRIOR TO INSTALLATION.
- 18 PROVIDE 1 1/4" PVC CONDUIT ROUTED FROM AA'S SWITCH IN ROOM 143 TO AA'S MDF EQUIPMENT LOCATED BEHIND TICKET COUNTER. STUB CONDUIT AT BOTH ENDS. PROVIDE 6 STRAND 50/125 um Om3 FIBER IN CONDUIT AND PROVIDE 6' SLACK AT EACH END FOR CONNECTIONS BY AA'S IT DEPARTMENT. PROVIDE LC CONNECTORS. COORDINATE EXACT REQUIREMENTS WITH AMERICAN AIRLINE'S IT REPRESENTATIVE PRIOR TO INSTALLATION AND PURCHASING OF ELECTRICAL ITEMS.
- 19 THE CAT6 CABLES PER (KEY NOTE 17) AT THIS LOCATION AND RELOCATION OF IT/RADIO EQUIPMENT SHALL BE PROVIDED DURING PHASE 3 (RENOVATION OF GATE B3). COORDINATE ALL WORK SO THAT AMERICAN AIRLINE IS OPERATIONAL AT ALL TIMES DURING NORMAL WORKING HOURS. REFER TO KEY NOTE 11 ON SHEET ED2.2.
- 20 PROVIDE 1 1/4" PVC CONDUIT ROUTED FROM AA'S RADIO EQUIPMENT IN ROOM 143 TO AA'S MDF EQUIPMENT LOCATED BEHIND TICKET COUNTER. STUB CONDUIT AT BOTH ENDS. PROVIDE 50-OHM COAXIAL CABLE - BELDEN 9913 RG8 IN CONDUIT AND PROVIDE 6' SLACK AT EACH END FOR CONNECTIONS BY AA'S IT DEPARTMENT. PROVIDE N-TYPE CONNECTORS. COORDINATE EXACT REQUIREMENTS WITH AMERICAN AIRLINE'S IT REPRESENTATIVE PRIOR TO INSTALLATION AND PURCHASING OF ELECTRICAL ITEMS.

STATE OF LOUISIANA
M. KIMBALL SCHLAFLY
REG. No. 27699
REGISTERED PROFESSIONAL ENGINEER
MECHANICAL ENGINEERING
5/11/2026

washer hill lipscomb
cabanis architecture, llc
copyright 2023

1744 oakdale dr baton rouge, la
t. 225.767.1530 f. 225.767.0018
www.whlccarchitecture.com

100% CD
03.11.2026
23-027
ADDENDUM #01 04.27.2026
ADDENDUM #2 05.01.2026

LEVELS 1 & 2 - CONCOURSE B NEW PLANS

E2.2

MCA
Engineering & Construction
BATON ROUGE, NEW ORLEANS

PROJECT MANAGER: KIMBALL SCHLAFLY

JOB NO. BR 23010
802