



"RE-BUILDING THE CITY'S WATER SYSTEMS FOR THE 21ST CENTURY"

Sewerage & Water Board OF NEW ORLEANS

625 ST. JOSEPH STREET
NEW ORLEANS, LA 70165 • 504-529-2837 OR 52-WATER
www.swbno.org

Addendum No. 1

Date: 4/10/2026

Your reference is directed to **Contract Number: 2026-SWB-12 (8174)** for Repairs to the Engineering Building at the Carrollton Water Plant which is scheduled to open at **11:30 a.m. CST** on **April 15, 2026**. This addendum provides for the following:

1. Responses to Vendor questions.
-

1. Responses to Vendor questions.

- Vendor Question:

Please provide the information about the drivers on site to confirm that the proposed Kusters drivers are suitable for replacement.

Response:

Refer to the Label Plate Notes and Attachment Notes provided with this clarification for available information on the existing drive units.

Additional reference information is provided in the following drawings:

- Drawing No. 1280D15 Rev. D – Center Column Assembly 164'- 0" Clarifier B.F. Type H.D.
- Drawing No. 1280D22 Rev. B – Drive Cage 164'- 0" Clarifier B.F Type H.D

These documents provide available information regarding mounting configuration and existing equipment characteristics.

- Vendor Question:

No information was identified in the bid documents other than torque requirements. Can field measurements of the existing drive units be provided?

Response:

As the existing units are currently in operation, field measurements are not feasible at this time.

Refer to the Label Plate Notes and Attachment Notes for available dimensional and equipment information.

Additional configuration and layout details are provided in the following drawings:

- ***Drawing No. 1280D15 Rev. D – Center Column Assembly 164'- 0" Clarifier B.F. Type H.D.***
- ***Drawing No. 1280D22 Rev. B – Drive Cage 164'- 0" Clarifier B.F Type H.D***
- ***Drawing No. 1275D48 Rev. H - Clarifier B.F. Type H.D. Layout***

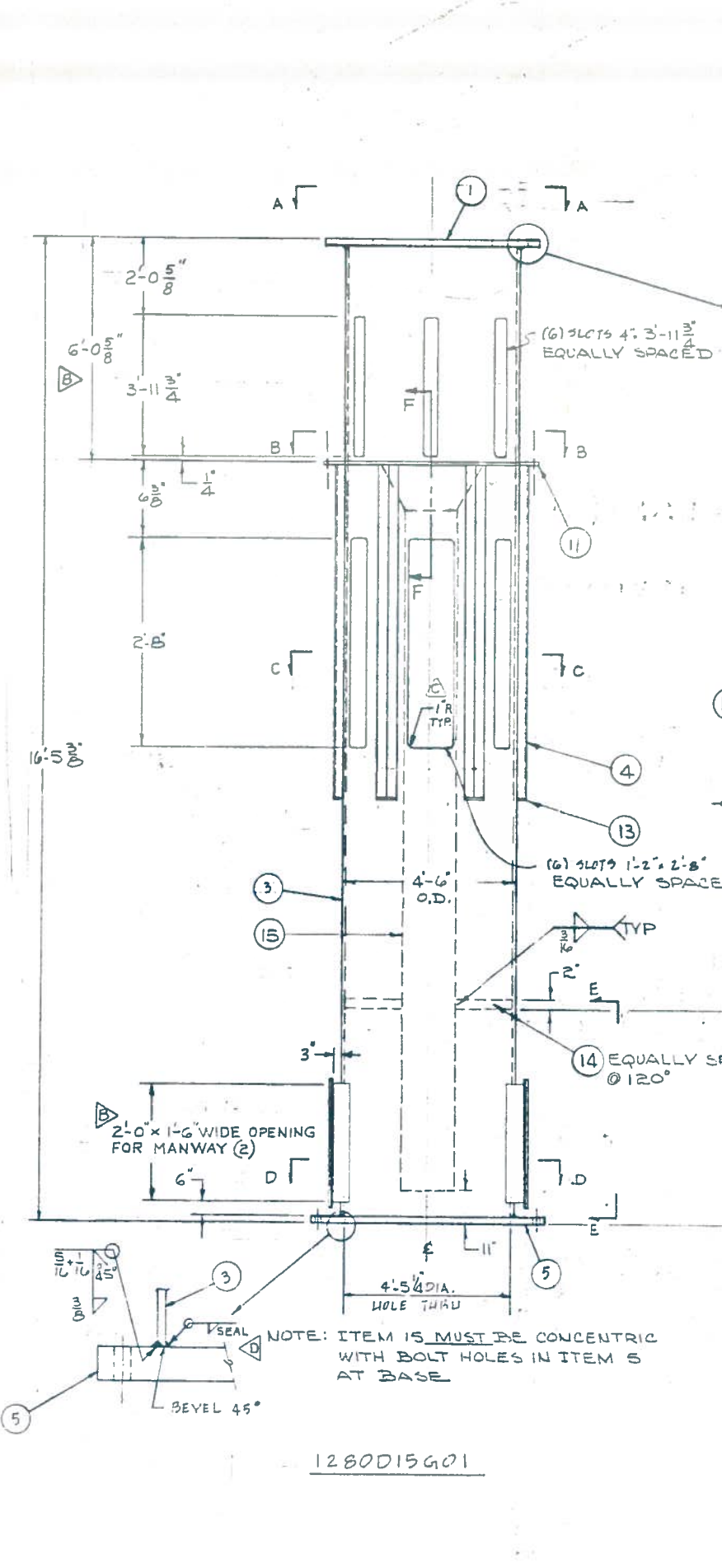
- ***The Contractor shall verify all field conditions prior to fabrication and installation.***

The above revisions shall be incorporated in and take precedence over any conflicting part of the original proposal documents. This addendum is hereby officially made a part of the referenced proposal.

Receipt of this addendum shall be acknowledged by inserting its number and date in the space provided on the Louisiana Uniform Public Works Bid Form.

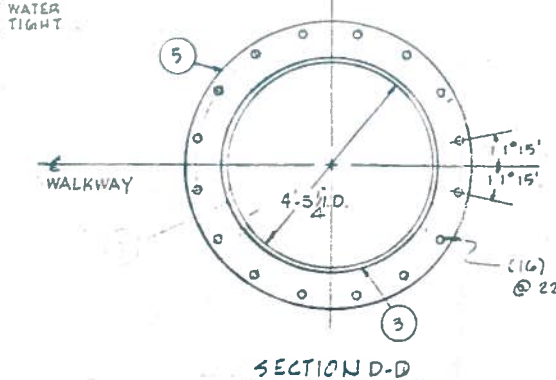
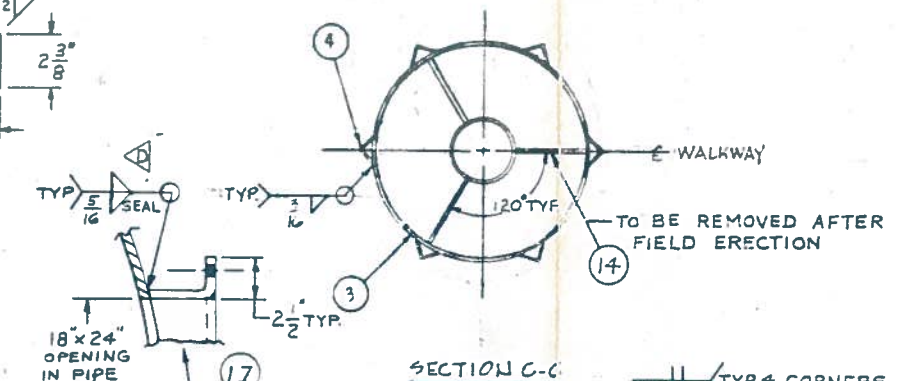
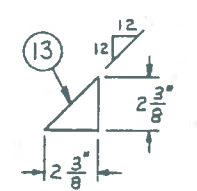
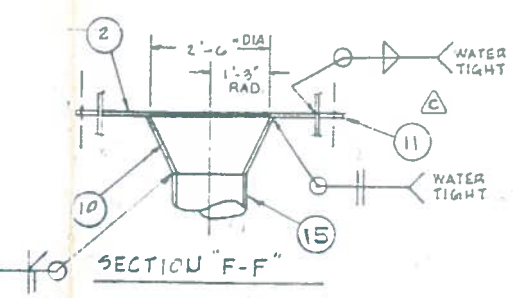
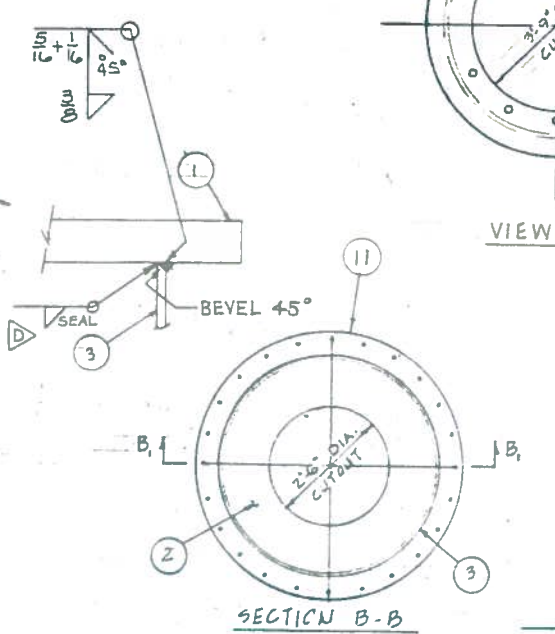
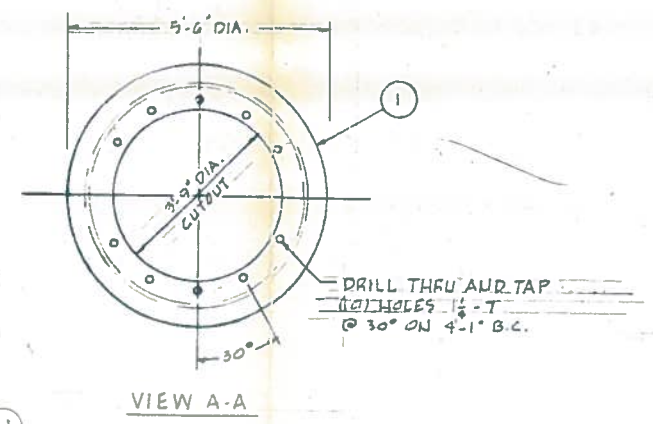
This addendum consists of one (1) page and attachments.

***** END OF ADDENDUM *****

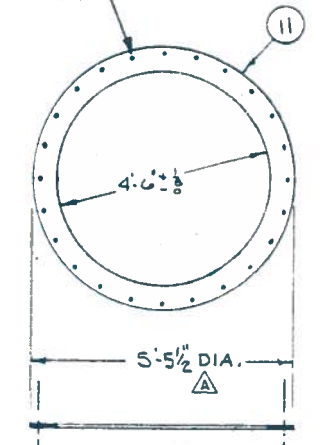


NOTE: ITEM 11 MUST BE CONCENTRIC WITH BOLT HOLES IN ITEM 5 AT BASE

1280D15G01



DRILL THRU AND TAP (24) HOLES 1/2-13 @ 15° ON A 5'-3" B.C.



NOTE:
 1. FINISH WELDS PER SPEC. D' DWG. W36462
 2. PAINT PER
 3. MANHOLE COVERS ITEM 7 AND 8 TO BE SHIPPED ASSEMBLED.
 4. TOLERANCES:
 NORMAL ± 1/8" EXCEPT AS NOTED. TOLERANCES APPLY PARTICULARLY TO OVER-ALL DIMENSIONS AND MUST NOT BE ACCUMULATIVE. HOLE DIMENSIONS MUST BE HELD TO ± 1/16".

QTY	ITEM NO.	DESCRIPTION	PART NUMBER	MATERIAL	SPECIFICATION	SYM
1	1	PL 2" x 66" OD x 45" ID.	1280D15H01	STL. A36		
1	2	PL 3/8" x 53" OD x 30" ID.	1280D15H02	STL. A36		
1	3	PL 3/8" x 193 3/8" x 168 7/8"	1280D15H03	STL. A36		
6	4	PL 3/8" x 3' x 5/8" x 5/8"	1280D15H04	STL. A36		
1	5	PL 2" x 71 3/8" OD x 53 1/2" ID.	1280D15H05	STL. A36		
14	6	LOCKWASHER 5/8"	1280D15H06	S.S.		
2	7	PL 3/8" x 23" x 29"	1280D15H07	STL. A36		
2	8	GASKET 3/8" x 23" x 29"	1280D15H08	NEOPRENE		
14	9	BOLT - H. 5/8" - 11 x 2" LG.	1280D15H09	S.S.		
1	10	CONCENTRIC REDUCER	2897B72H01	STL. A36		
1	11	PL 3/8" x 65 1/2" OD x 54" ID.	1280D15H11	STL. A36		
6	13	PL 3/8" x 2 3/8" x 2 3/8"	1280D15H13	STL. A36		
3	14	PL 3/8" x 2" x 18 5/8"	1280D15H14	STL. A36		
1	15	PIPE 16" STD x 98 3/8"	1280D15H15	STL. A53		
14	16	NUT HEX 5/8"-11	1280D15H16	S-STEEL		
2	17	PL 3/8" x 6 1/2" x 24"	1280D15H17	STL. A36		
2	18	PL 3/8" x 6 3/8" x 18" LG.	1280D15H18	STL. A36		
4	19	PL 3/8" x 2 1/2" x 2 1/2"	1280D15H19	STL. A36		

REV.	DATE	BY	CHKD.	DESCRIPTION
1	12/11/74			ADDED SEAL WELDS
2	12/11/74			DELETED ITEM 12 IN PARTS LIST ADDED 1/2-13 TAPPED HOLES IN ITEM 11
3	12/31/74			PARTS LIST ITEMS 6, 9, AND 16 WAS QTY 24 DIM. 6'-0 3/8" WAS 5'-11 3/8" MANHOLE WAS (1) ONE PLATE AT 1'-0" x 2'-0" OPENING IN PIPE
4	12/31/74			ITEM NO. 12 & 16 WERE MILD STEEL ITEM NO. 12 WAS 5'-4" PL. ITEM 11 WAS 5'-6"

THIS DRAWING CONTAINS INFORMATION PROPRIETARY TO IMPLCO DEPARTMENT INCORPORATED. IT IS SUBMITTED IN CONFIDENCE AND IS TO BE USED SOLELY FOR THE PURPOSE FOR WHICH IT IS FURNISHED AND RETURNED UPON REQUEST. THIS DRAWING AND SUCH INFORMATION IS NOT TO BE REPRODUCED, TRANSMITTED, DISCLOSED OR USED OTHERWISE IN WHOLE OR IN PART WITHOUT THE WRITTEN AUTHORIZATION OF IMPLCO DEPARTMENT INCORPORATED.

DR. DH
 CHK. [Signature]
 APP. [Signature]
 APP. [Signature]

SCALE: U.T.S.
 MICRO: 5/16" = 1"

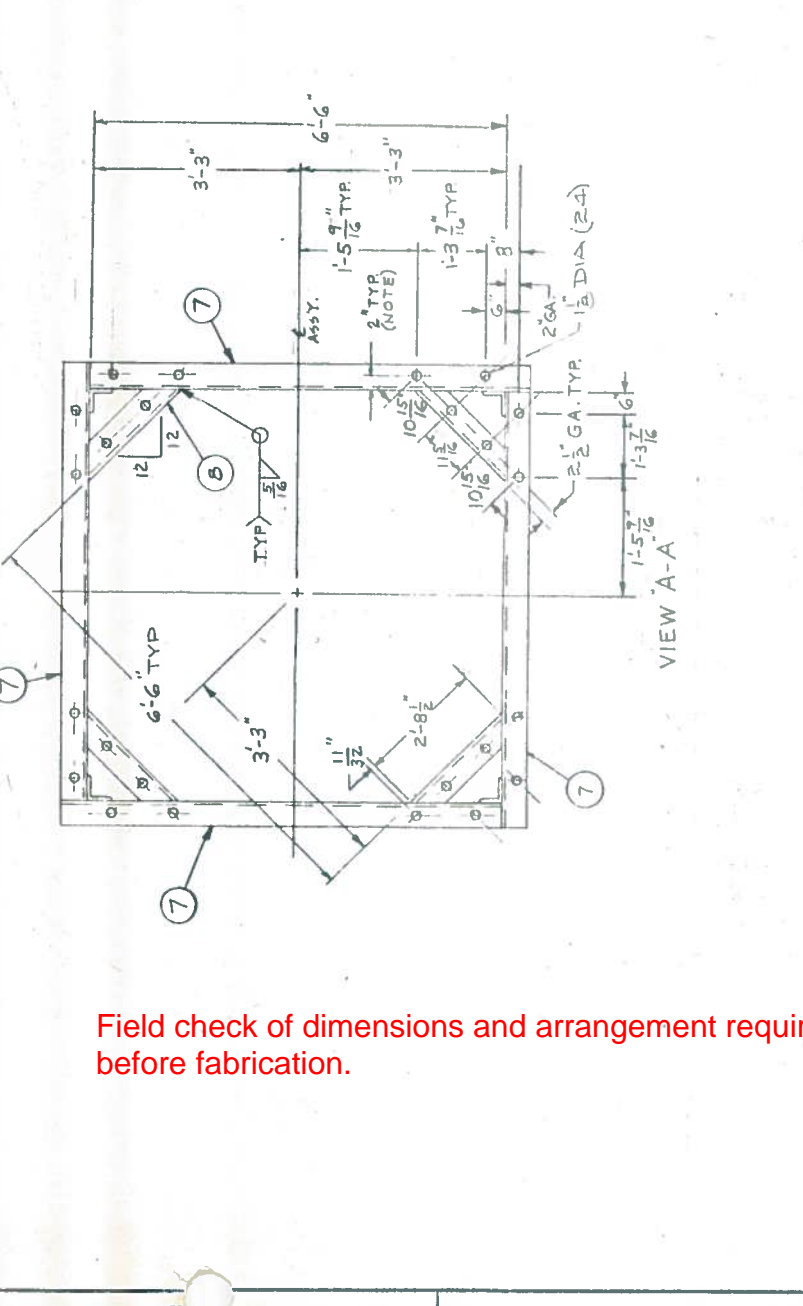
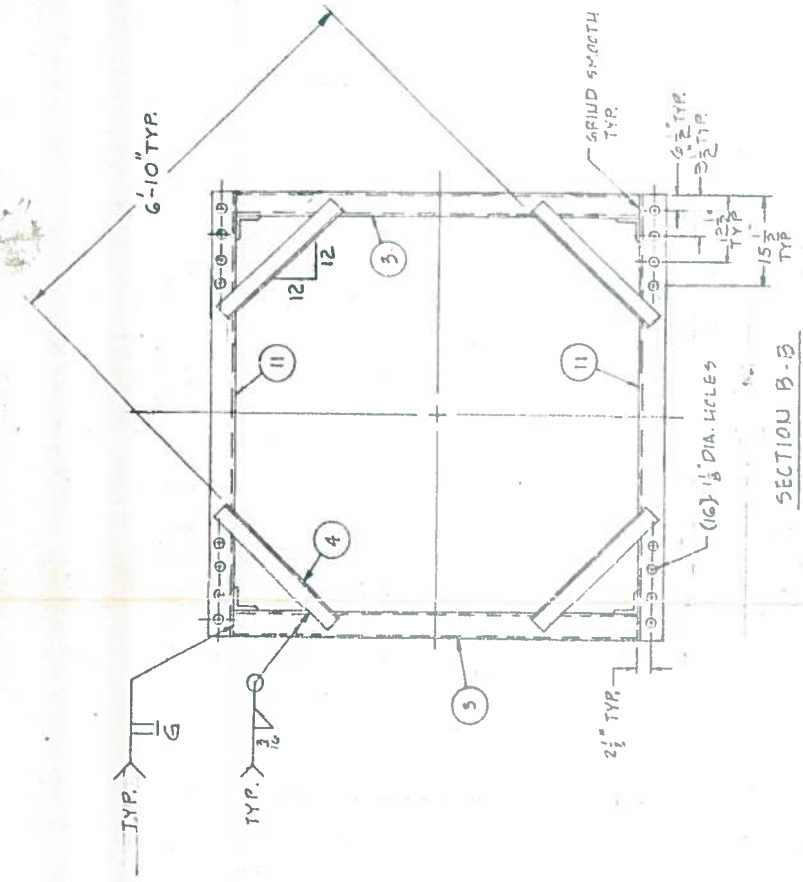
ASSEMBLY: [Signature]
 REFERENCE: [Signature]

1280D15 - D

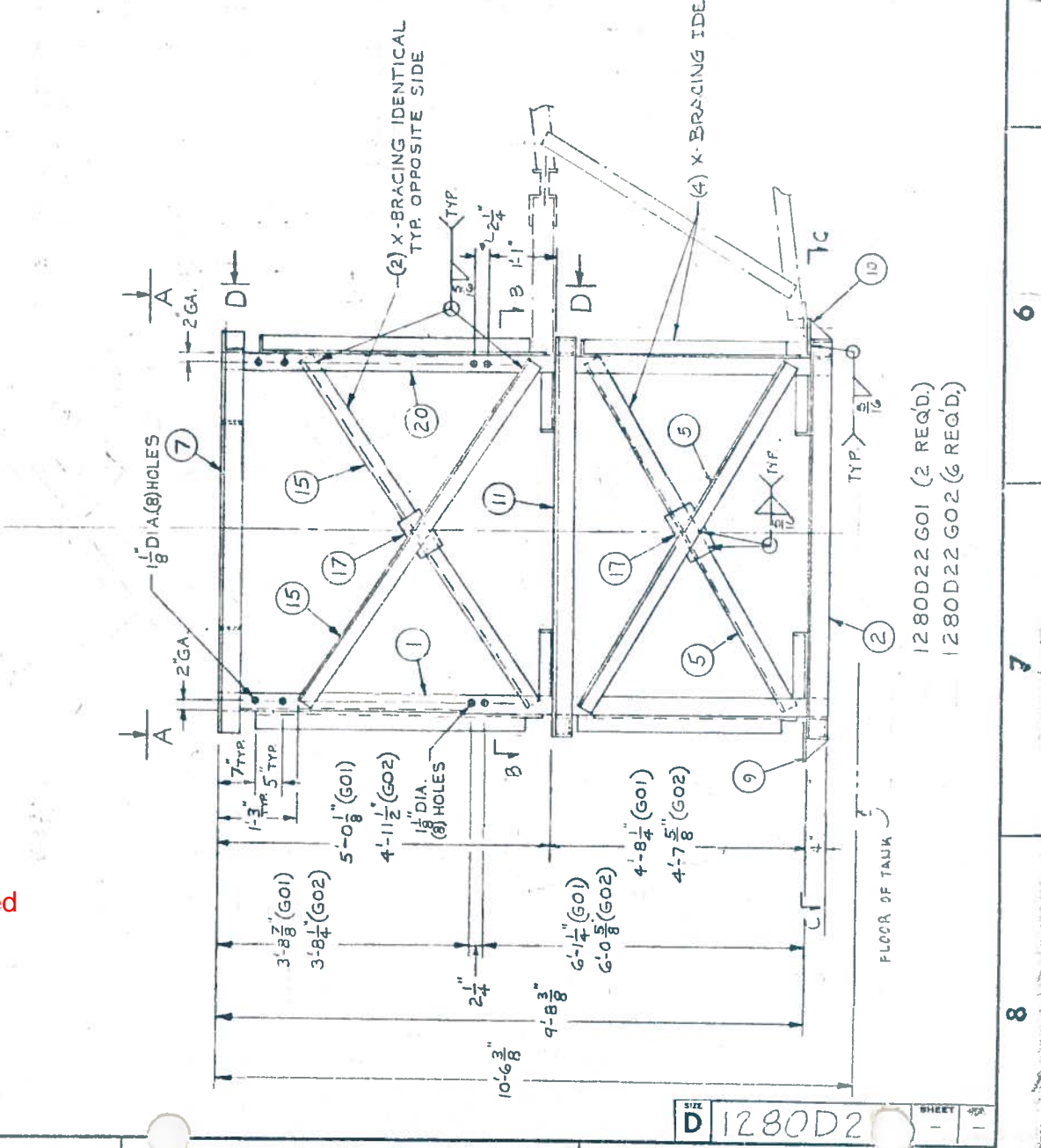
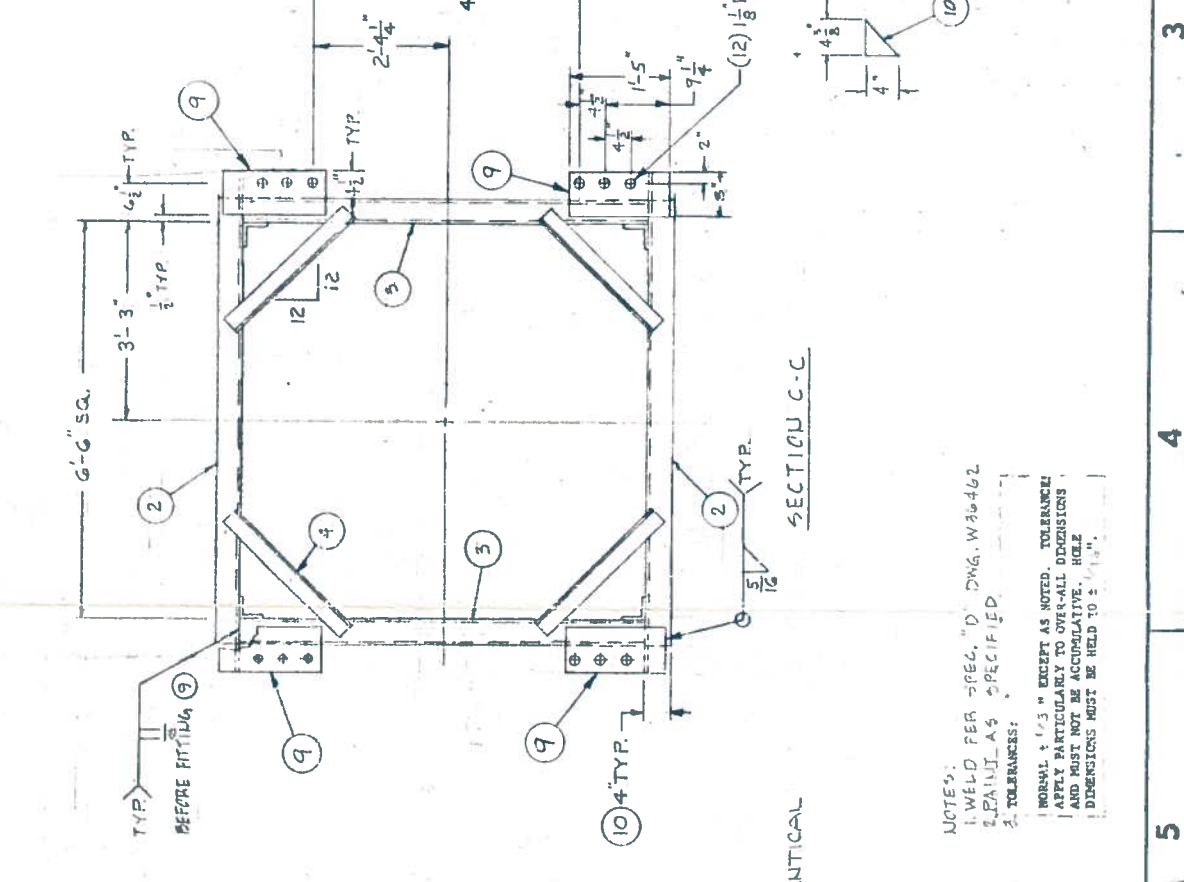
1280D15

R. JANJUA 2/7/74

QTY	ITEM NO.	DESCRIPTION	PART NUMBER	MATERIAL	SPECIFICATION	SYM
2	1	$2 \times 4 \times 8 \times 150 \frac{3}{8}$ "	1280D22H01	STL A36		
2	2	$2 \times 4 \times 8 \times 86$ "	1280D22H02	STL A36		
4	3	T	1280D22H03	STL A36		
8	4	$2 \times 4 \times 8 \times 31$ "	1280D22H04	STL A36		
8	5	$2 \times 4 \times 8 \times 90$ "	1280D22H05	STL A36		
4	7	$2 \times 4 \times 8 \times 92$ "	1280D22H07	STL A36		
4	8	$2 \times 4 \times 8 \times 32 \frac{1}{2}$ "	1280D22H08	STL A36		
4	9	$2 \times 4 \times 8 \times 17$ "	1280D22H09	STL A36		
4	10	$2 \times 4 \times 8 \times 4 \frac{1}{2}$ "	1280D22H10	STL A36		
2	11	$2 \times 4 \times 8 \times 86$ "	1280D22H11	STL A36		
4	14	$2 \times 4 \times 8 \times 92$ "	1280D22H14	STL A36		
4	15	$2 \times 4 \times 8 \times 87$ "	1280D22H15	STL A36		
8	17	$2 \times 4 \times 8 \times 10$ "	1280D22H17	STL A36		
2	20	$2 \times 4 \times 8 \times 120 \frac{3}{8}$ "	1280D22H20	STL A36		



REV	DATE	BY	CHKD	DESCRIPTION
K				ADDED GO2 AND ASSOCIATED DIMENSIONS
F				(2) 1/8" DIA HOLES FOR MATING BRKT. ALSO ADDED
B				DM. 2-8 1/2" AND 1/2" DIMS. 12 ON 12 SLOPES
F				ADDED VIEW D-D, INSIDE DIM WAS 5'-10"
F				DELETED ITEMS 6, 12, 13, 16, 18 & 19 IN PARTS LIST.
A				

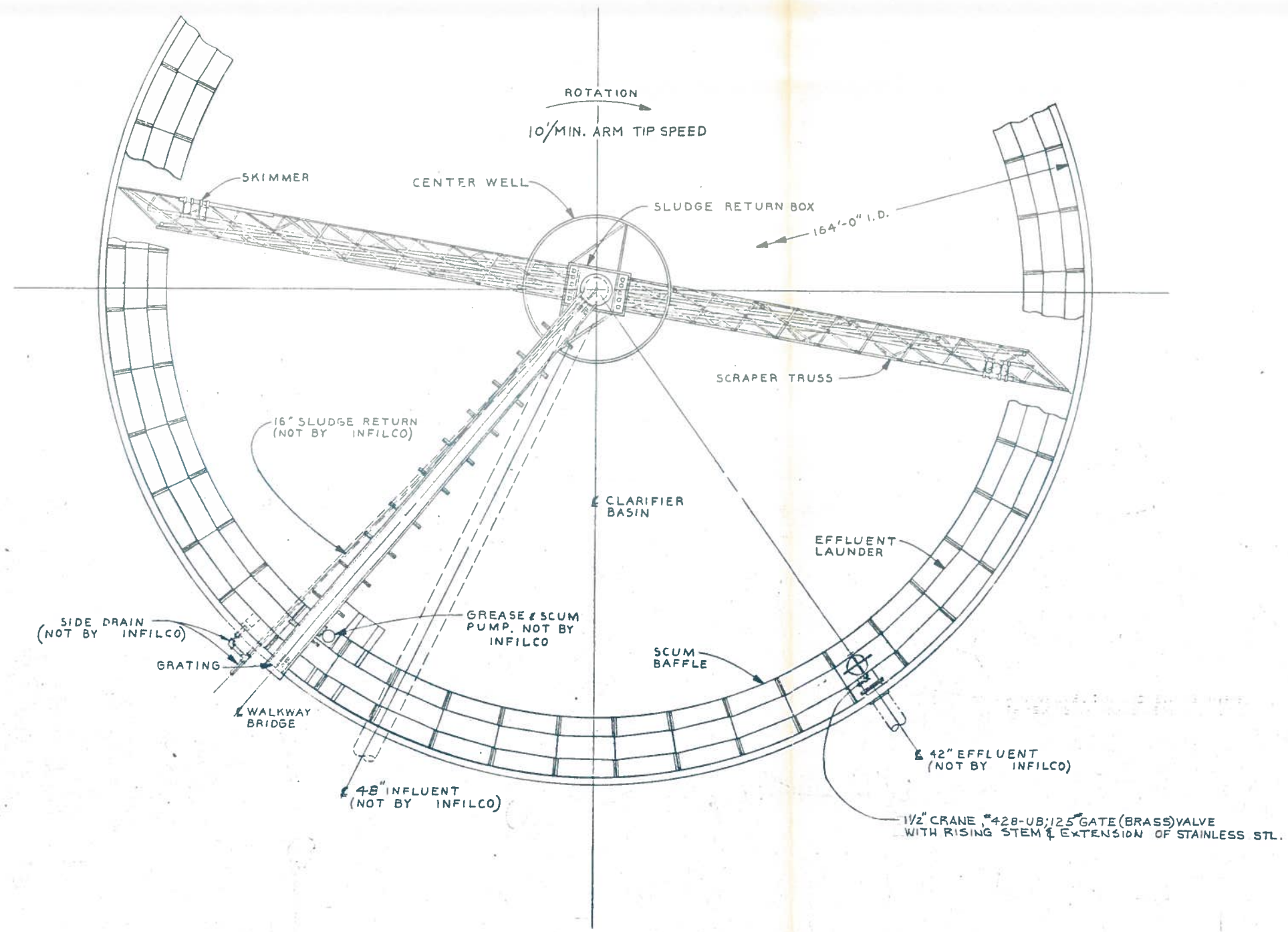


Field check of dimensions and arrangement required before fabrication.

NOTES:
 1. WELD PER SPEC. D. DWG. W30462
 PAINT AS SPECIFIED.
 2. TOLERANCES:
 NORMAL ± 1/32" EXCEPT AS NOTED. TOLERANCES
 APPLY PARTICULARLY TO OVER-ALL DIMENSIONS
 AND MUST NOT BE ACCUMULATIVE. HOLE
 DIMENSIONS MUST BE HELD TO ± 1/16".

1280D22 GO1 (2 REQD.)
 1280D22 GO2 (6 REQD.)

PARTS LIST						
QTY	ITEM NO.	DESCRIPTION	PART NUMBER	MATERIAL	SPECIFICATION	SYM



- NOTE:
1. THE DESIGN OF CONCRETE STRUCTURES NOT BY INFILCO
 2. THE DESIGN AND FABRICATION OF THE UNIT COMPONENTS WILL CONFORM TO THE LATEST AISC SPECIFICATIONS FOR BRIDGES AND BUILDINGS. ALL WELDING MUST CONFORM TO THE RECOMMENDATIONS OF THE A.W.S.
 3. ALL STRUCTURAL SHAPES AND PLATES TO BE ASTM-A36 UNLESS NOTED OTHERWISE.
 4. SUBMERGED CARBON STEEL TO BE 3/8" THICK MIN.
 5. SUBMERGED FASTENERS TO BE STAINLESS STEEL.

PLAN
 CLARIFIER NO. 1 SHOWN.
 SEE DWG NO. 1275D37 SH 1
 FOR ORIENTATION OF CLARIFIER
 NOS. 2, 3, 4, 5, 6, 7, 8

FOR ELEVATION - SEE SHEET 2
 FOR CENTER ASSY - SEE SHEET 3
 FOR SLUDGE PIPING - SEE SHEET 4
 FOR SKIMMER LAYOUT - SEE DRAWING 1277D69
 FOR SUGGESTED SCREED - SEE DRAWING 2683 B87

E	F	F	F	2/21/75	SHT. 3 ADDED DIMS. 1'-4" AND 2'-0" TO PLAN
D	F	F	F	1/24/75	SHT. 2 ADDED CONTRACTORS NOTES
C	F	F	F	1/16/75	GENERAL REV'S PER CUSTOMER REQUEST
B	F	F	F	1/16/75	GENERAL REV'S PER CUSTOMER REQUEST
A	F	F	F	1/16/75	REVISED SIDE DRAIN PIPING & REVISE SCUM BOX DRAIN (ADDED LONG BEND EL.'S ON SLUDGE COLLECTION PIPE)
	F	F	F	1/16/75	GENERAL REV'S PER CUSTOMER REQUEST

Infilco

Preliminary
 For Approval
 Certified

Not to be used for construction. Requests for changes can be made to project and delay shipment.

For EAST BANK SEWER PLANT
 NEW BRIDGE, VA
 Cust. Ord. No. 2500
 Infilco No. 74-001
 Date 12/15 Item No. 10

THIS DRAWING CONTAINS INFORMATION PROPRIETARY TO INFILCO DESIGNMENT INCORPORATED. IT IS SUBMITTED IN CONFIDENCE AND IS TO BE USED SOLELY FOR THE PURPOSE FOR WHICH IT IS FURNISHED AND RETURNED UPON REQUEST. THIS DRAWING AND SUCH INFORMATION IS NOT TO BE REPRODUCED, TRANSMITTED, DISCLOSED OR USED OTHERWISE IN WHOLE OR IN PART WITHOUT THE WRITTEN AUTHORIZATION OF INFILCO DESIGNMENT INCORPORATED.

DR. W. C. ...
 CHR. F. E.
 APP. F. PATENTING
 APP. ...
 APP. ...

1073000 DIVISION OF
 Designment Inc.
 Box 2118 Richmond, Va 23216

CLARIFIER
 BF. TYPE H.D.
 LAYOUT

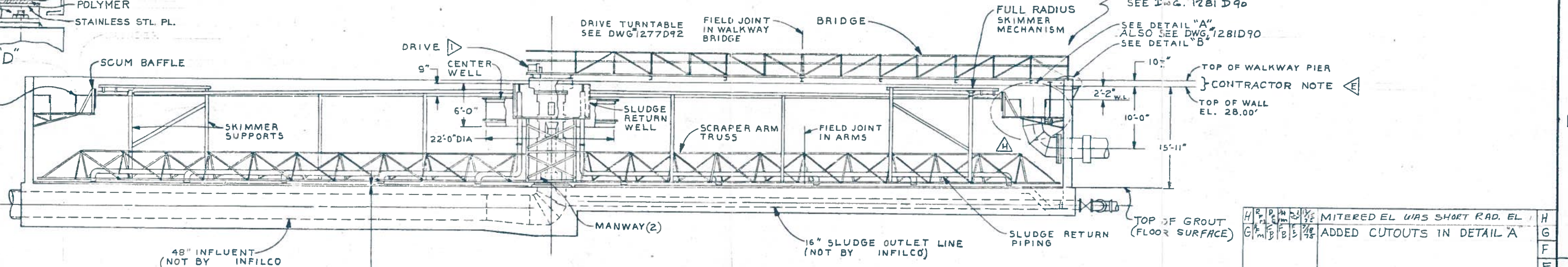
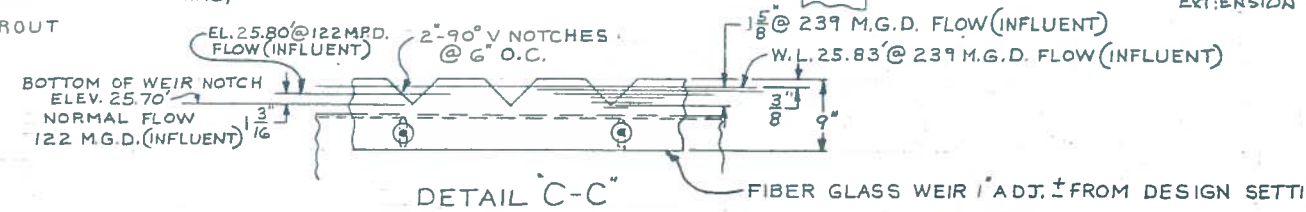
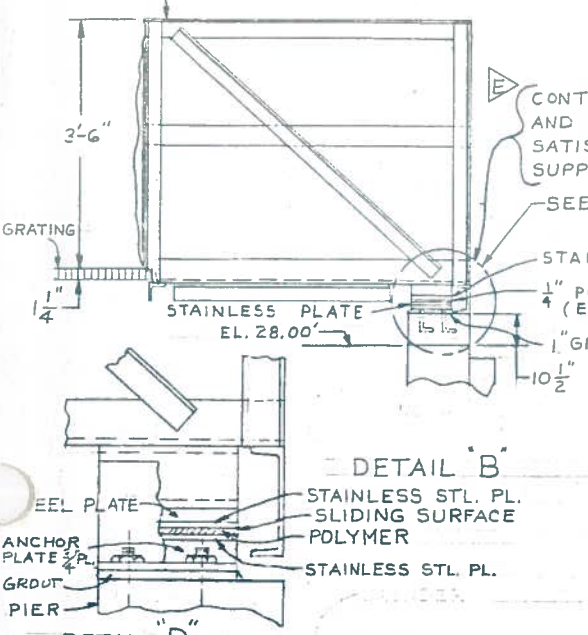
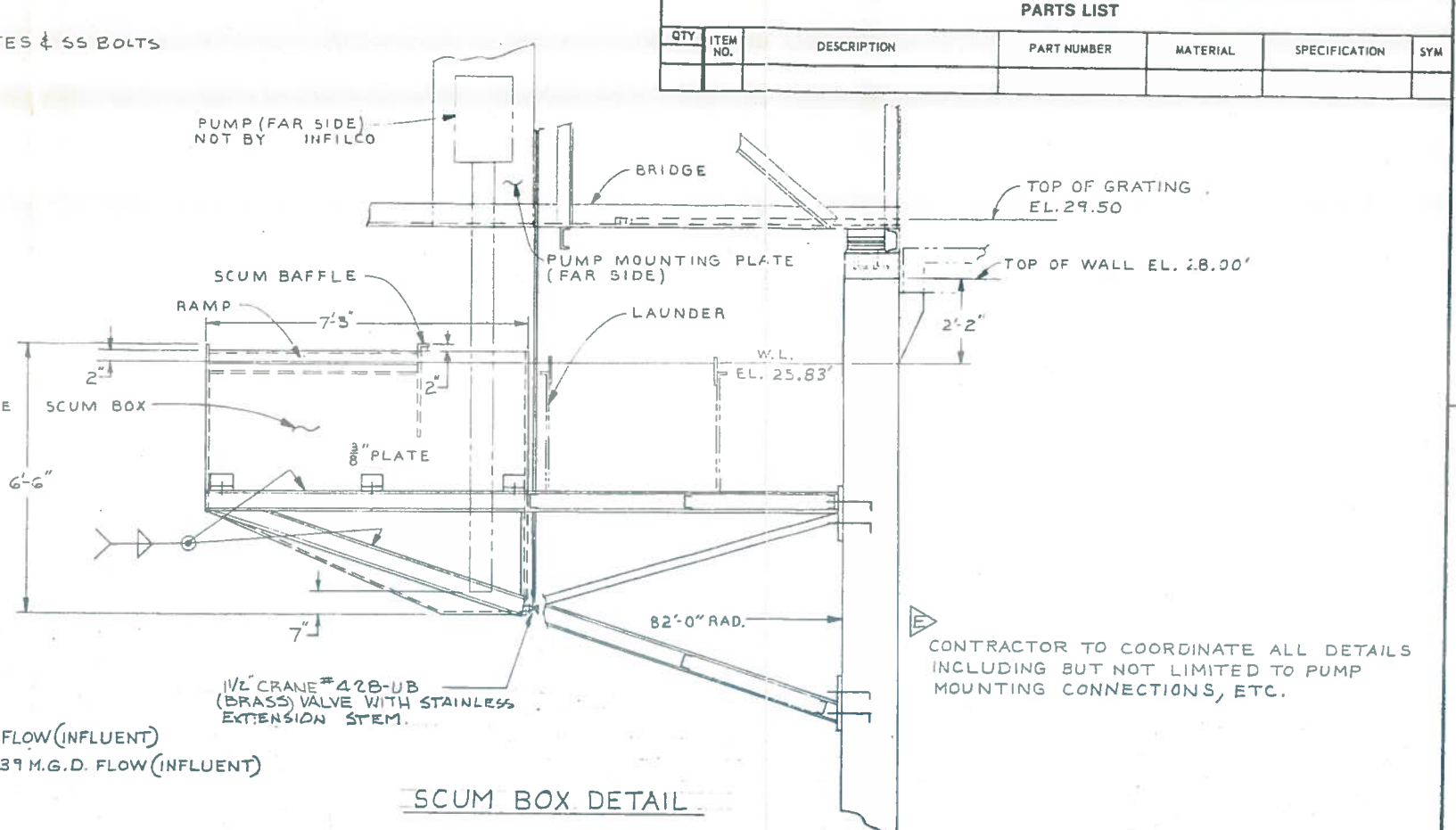
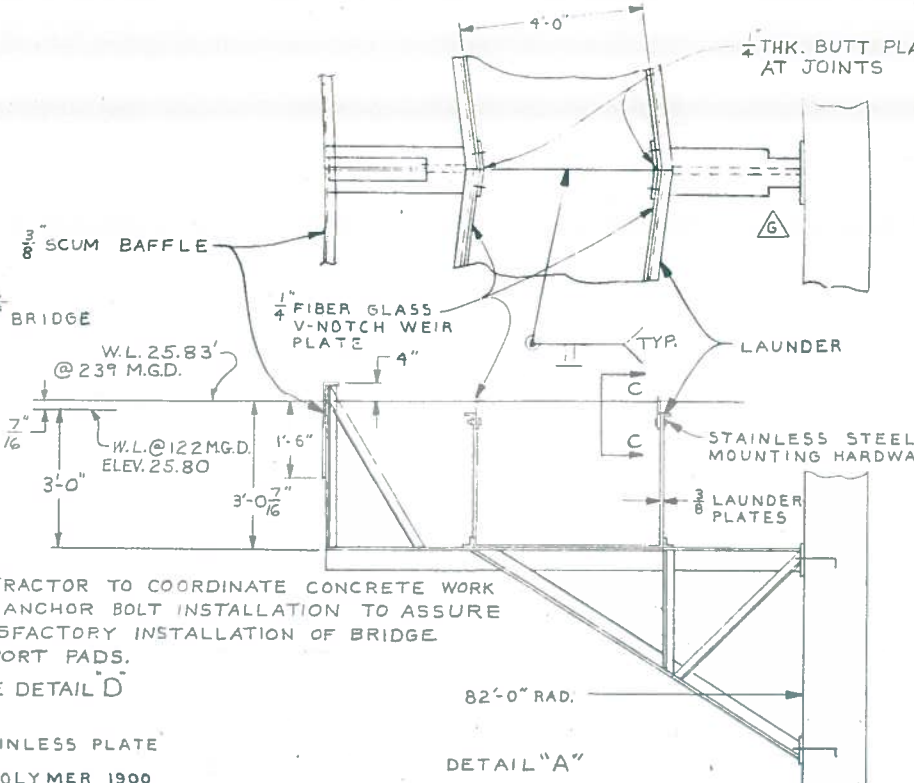
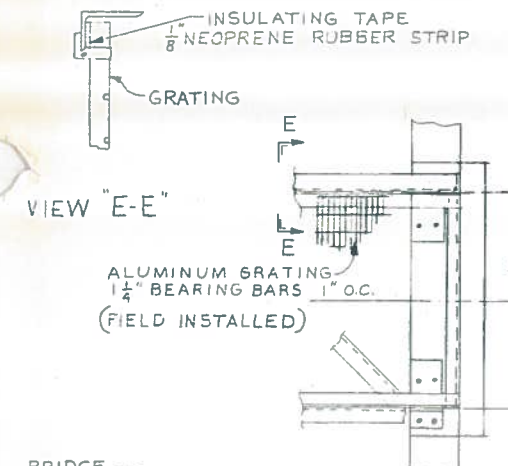
SCALE 1/4" = 1'-0"
 SIZE 164' 0"

REFERENCE SHEET 1 OF 4

DWG. NO. 1275D48

D1275D48

PARTS LIST						
QTY	ITEM NO.	DESCRIPTION	PART NUMBER	MATERIAL	SPECIFICATION	SYM



NOTE:
 1 DRIVE - 1 H.P. WITH TORQUE LIMIT DEVICE
 CURRENT - 460 VOLT, 3 PHASE, 60 HZ
 CONTROL CURRENT - 120 VOLT, 1 PHASE, 60 HZ
 MOTOR TEFC, CLASS F INSULATION
 CLASS B TEMP. RATING PREMIUM
 SHIELDED INSULATION WITH EXTRA DIPS
 AND BAKES FOR MOISTURE PROTECTION
 OF WINDINGS.

Infilco

Preliminary For Approval
 Certified

For EAST VALLEY REGIONAL PLANT

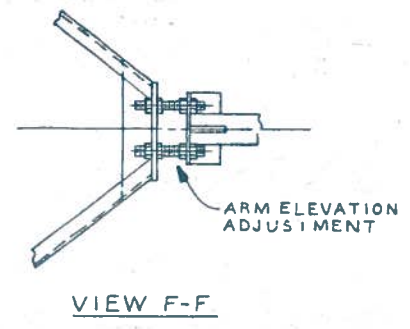
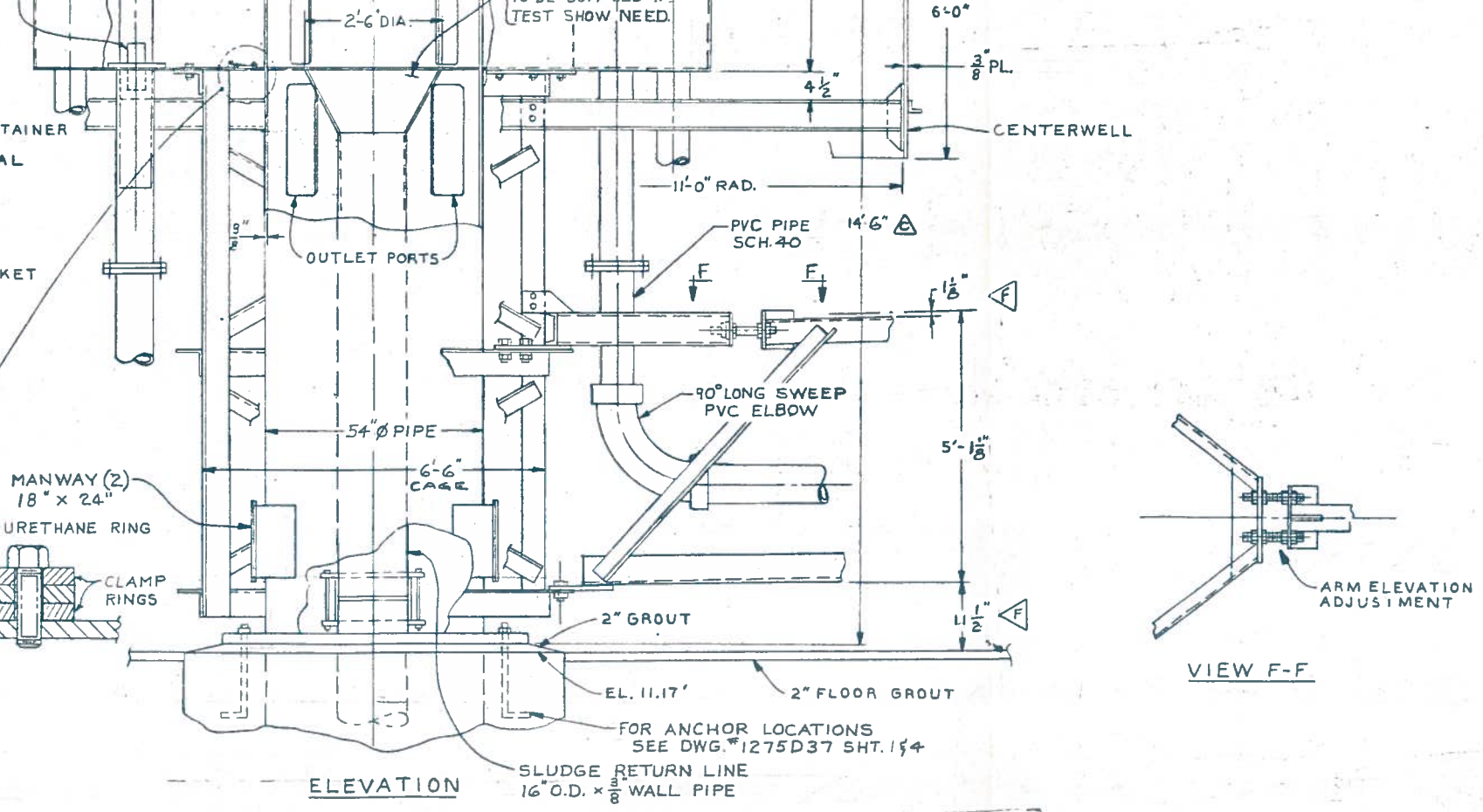
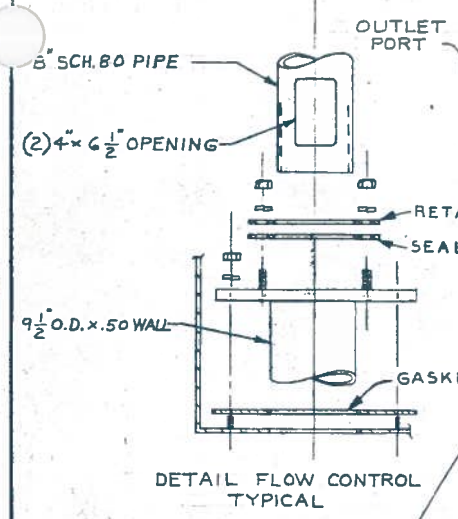
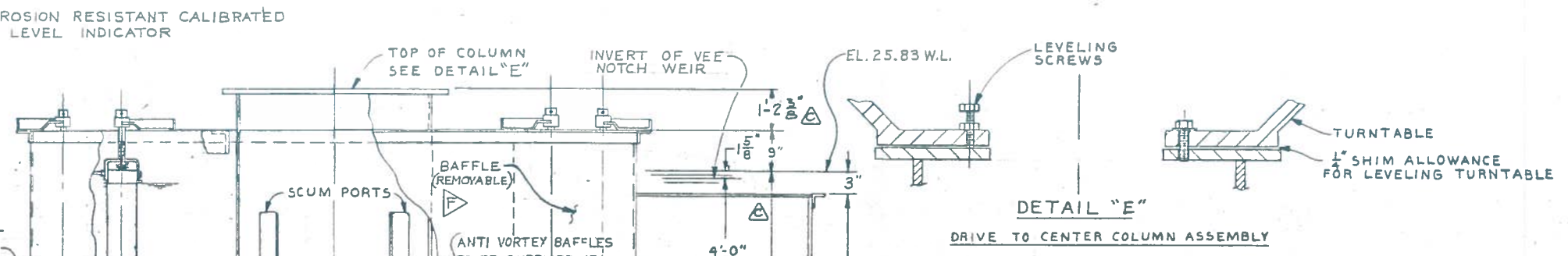
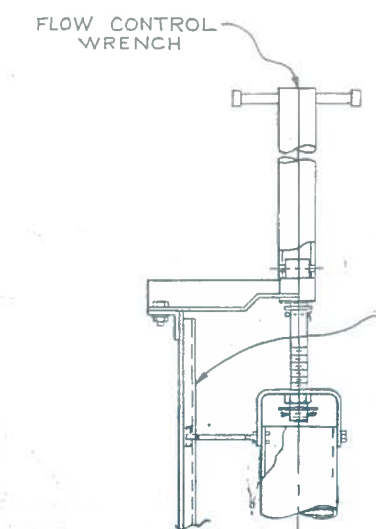
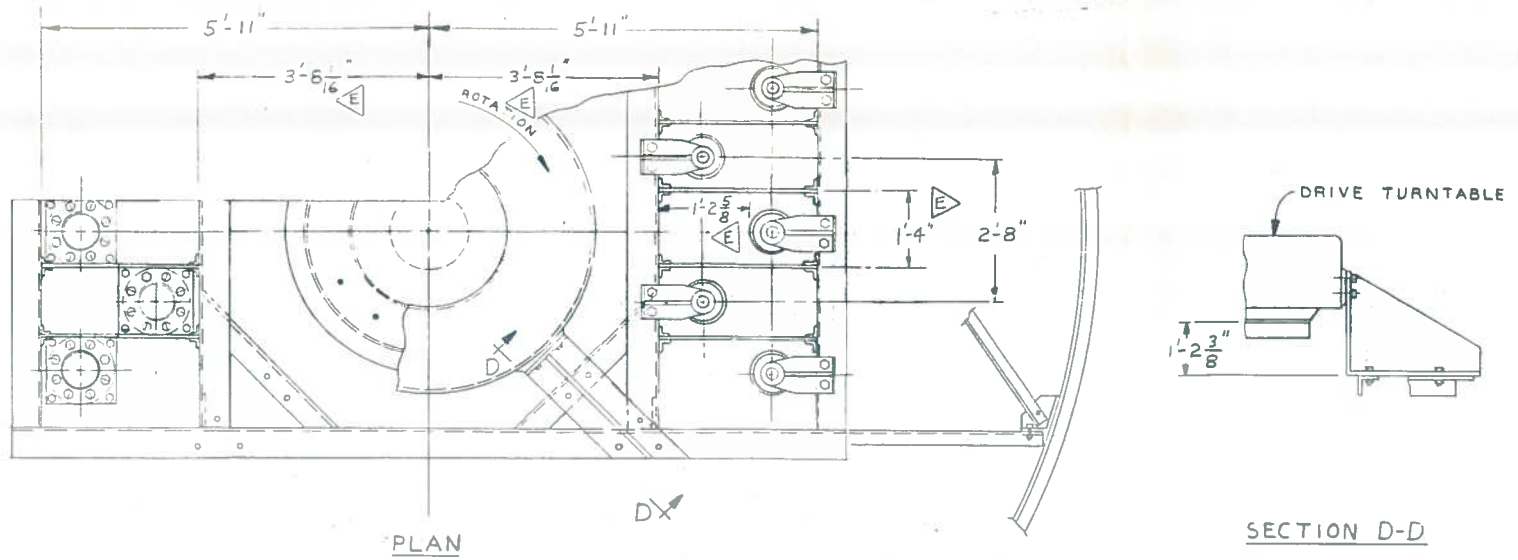
Proj. No. 1275048
 Cust. Ord. No. 488
 Infilco No. 1275048
 Date: 7-6-78 Item No. 2

Not to be used for construction. See notes for changes and add to plan and other attachments.

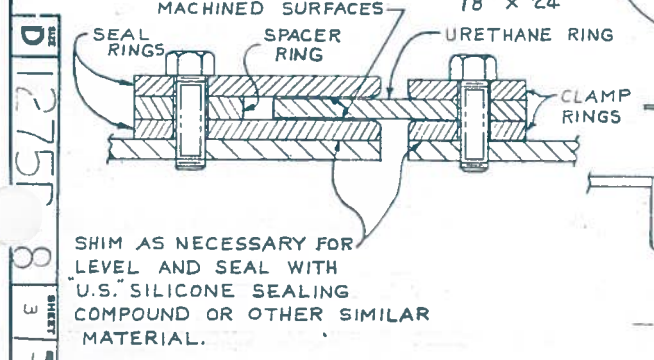
REV. NO.	DATE	BY	CHK.	APP.	RECD.
1	7/6/78	FPE			
MITERED EL WAS SHORT RAD. EL ADDED CUTOUTS IN DETAIL 'A'					
DIVISION OF DEGRESSION INC. Box 2118 Richmond, Va 23216					
CLARIFIER B.F. TYPE H.D. LAYOUT					
SCALE	1/4" = 1'-0"	SIZE	16 1/2" x 22"	DWG. NO.	D1275048
ASSEMBLY		REFERENCE		SHEET	2 OF 2

D1275048 2

PARTS LIST					
QTY	ITEM NO.	DESCRIPTION	PART NUMBER	MATERIAL	SPECIFICATION



NOTE:
1. FLOW CONTROL VALVE WILL BE ADJUSTABLE FROM BRIDGE AN ADJUSTING WRENCH FOR EACH UNIT WILL BE PROVIDE FOR THIS PURPOSE.



Inflico
 Preliminary
 For Approval
 Certified
 For EAST BAY WASTE PLANT
 NEW BRUNSWICK, NJ
 Cust. Ord. No. 4507
 Ind. g. N.
 Date 2-24 Item No.

REV. NO.	DATE	DESCRIPTION
F	12/75	ADDED REMOVABLE BAFFLES & DIM
M		
B		
F		
W		
U		
S		
R		
A		
M		
M		
C		
B		
A		
A		

THIS DRAWING CONTAINS INFORMATION PROPRIETARY TO INFILCO DEGREEMENT INCORPORATED. IT IS SUBMITTED IN CONFIDENCE AND IS TO BE USED SOLELY FOR THE PURPOSE FOR WHICH IT IS FURNISHED AND RETURNED UPON REQUEST. THIS DRAWING AND SUCH INFORMATION IS NOT TO BE REPRODUCED, TRANSMITTED, DISCLOSED OR USED OTHERWISE IN WHOLE OR IN PART WITHOUT THE WRITTEN AUTHORIZATION OF INFILCO DEGREEMENT INCORPORATED.

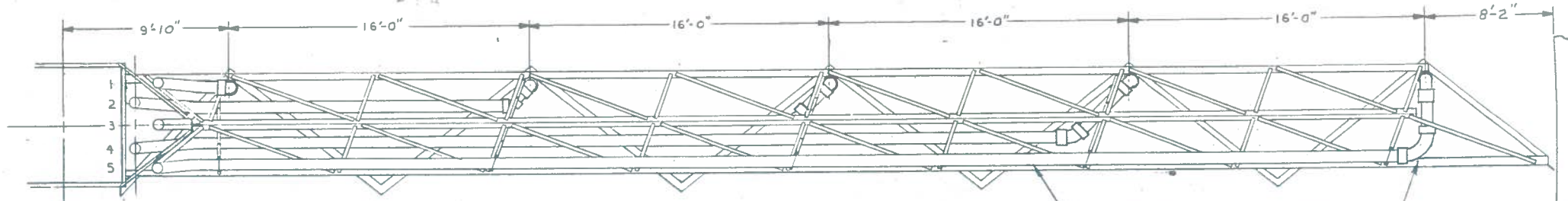
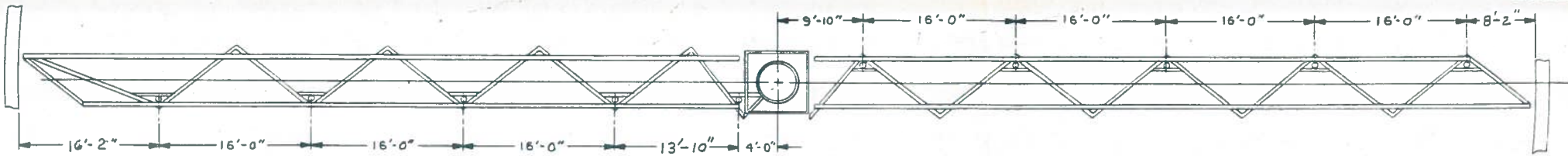
Div 2000 DIVISION OF
 Dogwood
 Box 2118 Richmond, Va 23216

CLARIFIER
 BF TYPE HD.
 164' LAYOUT

SCALE: 1/4" = 1'-0"
 SIZE: 11" x 17"
 SHEET NO. D1275D48
 REV. 3

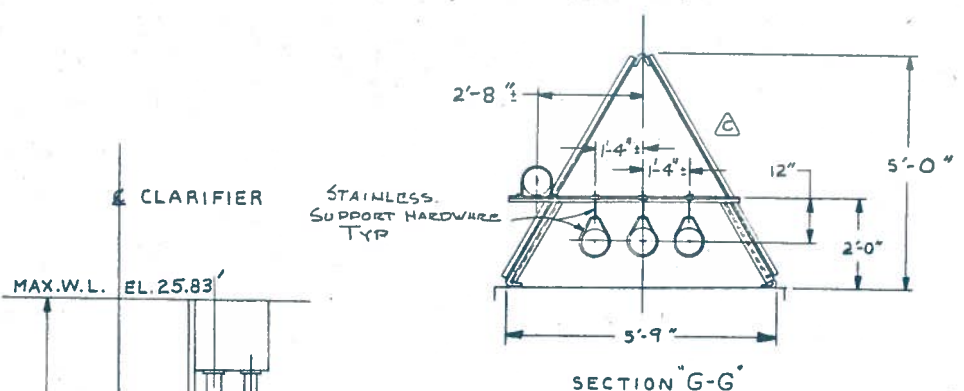
D1275J 8 3 1

PARTS LIST					
QTY	ITEM NO.	DESCRIPTION	PART NUMBER	MATERIAL	SPECIFICATION



PLAN

SLUDGE COLLECTOR PIPES
8" SCH. 40 HI IMPACT PVC



SECTION "G-G"

CLARIFIER

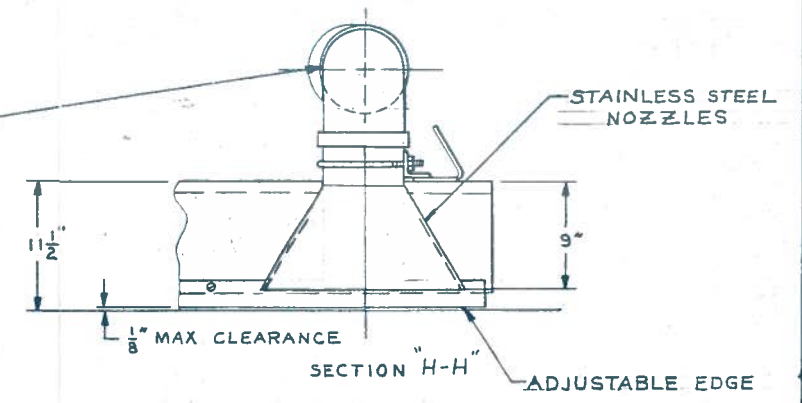
STAINLESS
SUPPORT HARDWARE
TYP

MAX.W.L. EL. 25.83'

14'-8"

90° LONG SWEEP
P.V.C. ELBOW

ALL 90° ELBOWS TO BE
LONG SWEEP



SECTION "H-H"

STAINLESS STEEL
NOZZLES

ADJUSTABLE EDGE

82'-0" RAD.

1 1/2" MAX.

12" 1/8"

ADJUSTABLE BRASS EDGES

ELEVATION

D1275048

H
G
F
E
D
C
B
A

inflico

Preliminary
 For Approval
 Certified

For EAST BANK SEWER PLANT
Cust. Ord. No. 100-100
Date 2/16/15 Item No. 102

Not to be used for construction.
Requests for changes can only be made to price and delivery shipment.

REV. NO.	DATE	BY	CHK.	APP.	MICRO
1	2/16/15	JP	CP		
THIS DRAWING CONTAINS INFORMATION PROPRIETARY TO INFILCO DEGREMENT INCORPORATED. IT IS SUBMITTED IN CONFIDENCE AND IS TO BE USED SOLELY FOR THE PURPOSE FOR WHICH IT IS FURNISHED AND RETURNED UPON REQUEST. THIS DRAWING AND SUCH INFORMATION IS NOT TO BE REPRODUCED, TRANSMITTED, DISCLOSED OR USED OTHERWISE, IN WHOLE OR IN PART WITHOUT THE WRITTEN AUTHORIZATION OF INFILCO DEGREMENT INCORPORATED.					
Div 8000 DIVISION OF Degrement Inc. Box 2118 Richmond, Va 23216					
CLARIFIER B.F. TYPE H.D. LAYOUT					
ASSEMBLY	SCALE	SIZE	DWG. NO.	SHEET	REV
			D1275048	4	H

Label Plate and Attachment Notes

Label Plate Notes

These label plate notes apply to Clarifiers 1 through 3 only. Clarifier 4 differs due to higher torque requirements; however, the mounting details are the same.

Motors (Clarifiers 1 through 3 only):

- 1 HP
- 208-230 VAC, 60 Hz, 3-phase
- 3.2-2.8 amps
- 1740 RPM
- Frame: 56C
- Service factor: 1.15
- Code J, Design B, Class F
- 40°C ambient, continuous duty
- TEFC

Overall Drive Unit:

- HiTech Model 60D-H
- Serial Numbers: 060954-D and 060954-G
- Label plate for Clarifier 2 is not available

Attachment Notes

Drive units attach to a flange with the following configuration: Outside Diameter (OD): 5'-6"

- Inside Diameter (ID): 3'-9"
- (10) holes, 1¼-inch diameter, spaced at 30 degrees
- Bolt circle (B.C.): 4'-1"

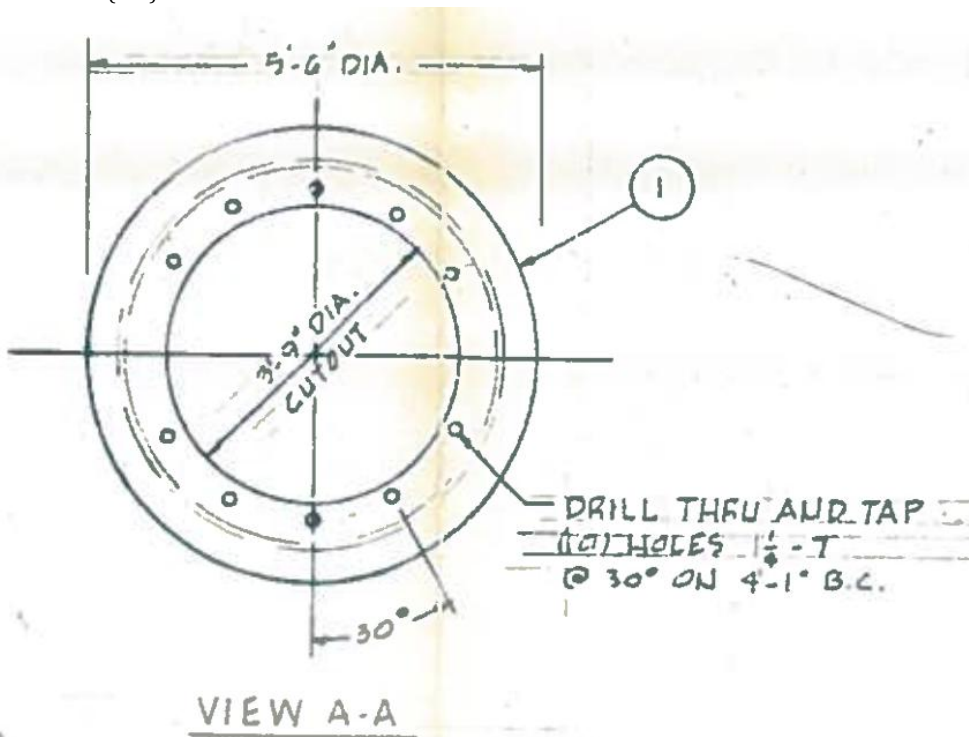


Figure 1. Flange drive attachment configuration

Contractor shall verify all dimensions and field conditions prior to fabrication and installation.