



Attachment B – Scope of Work

RFx: 3000025555

Title: Limestone - LDWF

Scope of Work

The Contractor shall provide, deliver, offload and spread #57 and #610 limestone aggregate to multiple sites on Marsh Island Refuge (Iberia Parish) and State Island Refuge (Vermilion Parish) for the Louisiana Department of Wildlife and Fisheries (LDWF).

Site Location

Marsh Island Refuge

State Island Refuge

Operation #1 Hurricane Delta:

- Aggregate must be spread out evenly and level for all sites except the East Impound WCS by the Contractor. For the East Impound WCS site, aggregate will be distributed out in multiple piles as per LDWF instructions.

Latitude	Longitude	Refuge	Sites	Tons	Size
29.670656°	-92.144098°	State Wildlife	South Lake WCS	216	#57
29.544225°	-91.906885°	Marsh Island	MI tractor shed	241	#57
29.577495°	-91.884011°	Marsh Island	Big Dam WCS	294	#57
29.581759°	-91.829598°	Marsh Island	Gordy Dam WCS	132	#57
29.599382°	-91.863771°	Marsh Island	Belly Dam WCS	150	#57
29.543877°	-91.906968°	Marsh Island	East Impound WCS	288	#610

Operation #2 Headquarters Sites:

- Aggregate will be distributed out in multiple piles as per LDWF instructions.

Latitude	Longitude	Refuge	Sites	Tons	Size
29.674751°	-92.135817°	State Wildlife	SW HQ	505	#57
29.624320°	-91.878867°	Marsh Island	MI HQ	277	#57

See water depths information attached.

Specification gradation for #57 limestone:

Gradation Sieve Size	%	Passing
----------------------	---	---------



Attachment B – Scope of Work

RFx: 3000025555

Title: Limestone - LDWF

1-1/2" (37.5 mm)	100	100
1" (25.0 mm)	95	100
1/2" (12.5 mm)	25	60
#4 (4.75 mm)	0	10
#8 (2.36 mm)	0	5

Specific Gravity (Astm C 127 Aashto T-85)

Bulk Dry	2.64
Saturated Surface Dry	2.67
Apparent	2.71
Absorption	1.00

Los Angeles Abrasion (Astm C 131 Aashto T-96)

Grading	A
% Loss	27.00

Unit weight - lbs. per cubic foot (Astm C 29 Aashto T-19)

Dry Loose	81.00
Dry Rodded	92.00

Sodium Sulfate Soundness (Astm C 88 Aashto T-104)

% Loss	3.50
--------	------

Specification gradation for #610 limestone:

Gradation Sieve Size	%	Passing
1-1/2" (37.5 mm)	100	100
1" (25.0 mm)	85	100
1/2" (12.5 mm)	40	75
#4 (4.75 mm)	15	40

Moisture = Sensity Data (Astm D 698-C)

Maximum Density	134.8
Optimum Moisture	7.7

Los Angeles Abrasion (Astm C 131 Aashto T-96)

Grading	A
% Loss	29



Attachment B – Scope of Work

RFx: 3000025555

Title: Limestone - LDWF

Flat & Elongated (Astm D 4791) 0.0.

Unit weight - lbs. per cubic foot (Astm C 29 Aashto T-19)

Dry Loose 100.0

Dry Rodded 111.0

Sodium Sulfate Soundness (Astm C 88 Aashto T-104)

% Loss 9.0

Plasticity Index (Astm D 4318) 0.0

Liquid Limit 16.3

Plastic Limit 0.0

General Terms and Conditions:

- The Contractor shall provide bid amounts for every site for Operation # 1 and Operation # 2 (all-or-none basis)
- The Contractor shall provide all aggregate for Operation # 1 and Operation # 2 (all-or-none basis)
- Bids should reflect unit price per ton of specified aggregate
- Unit prices should be all inclusive (aggregate, delivery, offloading, spreading, etc.) to each site.
- See attached maps and tables for site locations, possible access routes, water level estimates, etc.
- Invoice(s) must have individual site quantities separated.
- All work to be completed by June 30, 2026.
- All invoice(s) must be received by LDWF by July 7, 2026.

**LAKE TOM APPROXIMATE WATER DEPTHS FOR GORDY DAM
WCS LIMESTONE**

Location	Northing	Easting	Average Depths for 2024 (feet)				
			March	April	May	June	July
G15	29.58699	91.82304	7.12	7.36	7.81	7.62	7.28



Attachment B – Scope of Work

RFx: 3000025555

Title: Limestone - LDWF

G14	29.58727	91.82253	5.52	5.76	6.21	6.02	5.68
G13	29.58715	91.82222	5.32	5.56	6.01	5.82	5.48
G12	29.58709	91.82204	4.72	4.96	5.41	5.22	4.88
G11	29.58677	91.82085	3.32	3.56	4.01	3.82	3.48
G10	29.58683	91.81974	3.32	3.56	4.01	3.82	3.48
G9	29.58657	91.81909	3.42	3.66	4.11	3.92	3.58
G8	29.58658	91.81719	3.82	4.06	4.51	4.32	3.98
G7	29.58615	91.81664	4.12	4.36	4.81	4.62	4.28
G6	29.58593	91.8149	4.12	4.36	4.81	4.62	4.28
G5	29.58624	91.81428	4.12	4.36	4.81	4.62	4.28
G4	29.58622	91.81267	4.12	4.36	4.81	4.62	4.28
G3	29.58571	91.81094	4.52	4.76	5.21	5.02	4.68
G2	29.58456	91.80883	6.62	6.86	7.31	7.12	6.78
G1	29.58452	91.80861	8.22	8.46	8.91	8.72	8.38

Location	Northing	Easting	Average Depths for 2024 (feet)				
			August	September	October	November	December
G15	29.58699	91.82304	7.31	7.73	7.73	7.69	6.95
G14	29.58727	91.82253	5.71	6.13	6.13	6.09	5.35
G13	29.58715	91.82222	5.51	5.93	5.93	5.89	5.15
G12	29.58709	91.82204	4.91	5.33	5.33	5.29	4.55
G11	29.58677	91.82085	3.51	3.93	3.93	3.89	3.15
G10	29.58683	91.81974	3.51	3.93	3.93	3.89	3.15
G9	29.58657	91.81909	3.61	4.03	4.03	3.99	3.25
G8	29.58658	91.81719	4.01	4.43	4.43	4.39	3.65
G7	29.58615	91.81664	4.31	4.73	4.73	4.69	3.95
G6	29.58593	91.8149	4.31	4.73	4.73	4.69	3.95
G5	29.58624	91.81428	4.31	4.73	4.73	4.69	3.95
G4	29.58622	91.81267	4.31	4.73	4.73	4.69	3.95
G3	29.58571	91.81094	4.71	5.13	5.13	5.09	4.35
G2	29.58456	91.80883	6.81	7.23	7.23	7.19	6.45
G1	29.58452	91.80861	8.41	8.83	8.83	8.79	8.05

BIG DAM AND BELLY DAM WCS SHALLOWEST WATER DEPTHS



Attachment B – Scope of Work

RFx: 3000025555

Title: Limestone - LDWF

Sites	Average Depths for 2024 (feet)				
	March	April	May	June	July
Belly Dam Canal	2.97	3.21	3.66	3.47	3.13
Big Dam	3.57	3.81	4.26	4.07	3.73

Sites	Average Depths for 2024 (feet)				
	August	September	October	November	December
Belly Dam Canal	3.16	3.58	3.58	3.54	2.8
Big Dam	3.76	4.18	4.18	4.14	3.4

All water level information above is intended only as general knowledge of normal, average, monthly water levels and in no way is a guarantee of actual water levels at any time. Water levels will vary and change constantly with lunar tides and winds. Water levels are expected to be lowest in January and February. All sites are on public property and are accessible via boat. Interested bidders should assess each site and routes prior to submitting bids.



Attachment B – Scope of Work

RFx: 3000025555

Title: Limestone - LDWF

GENERAL MAP OF SITES



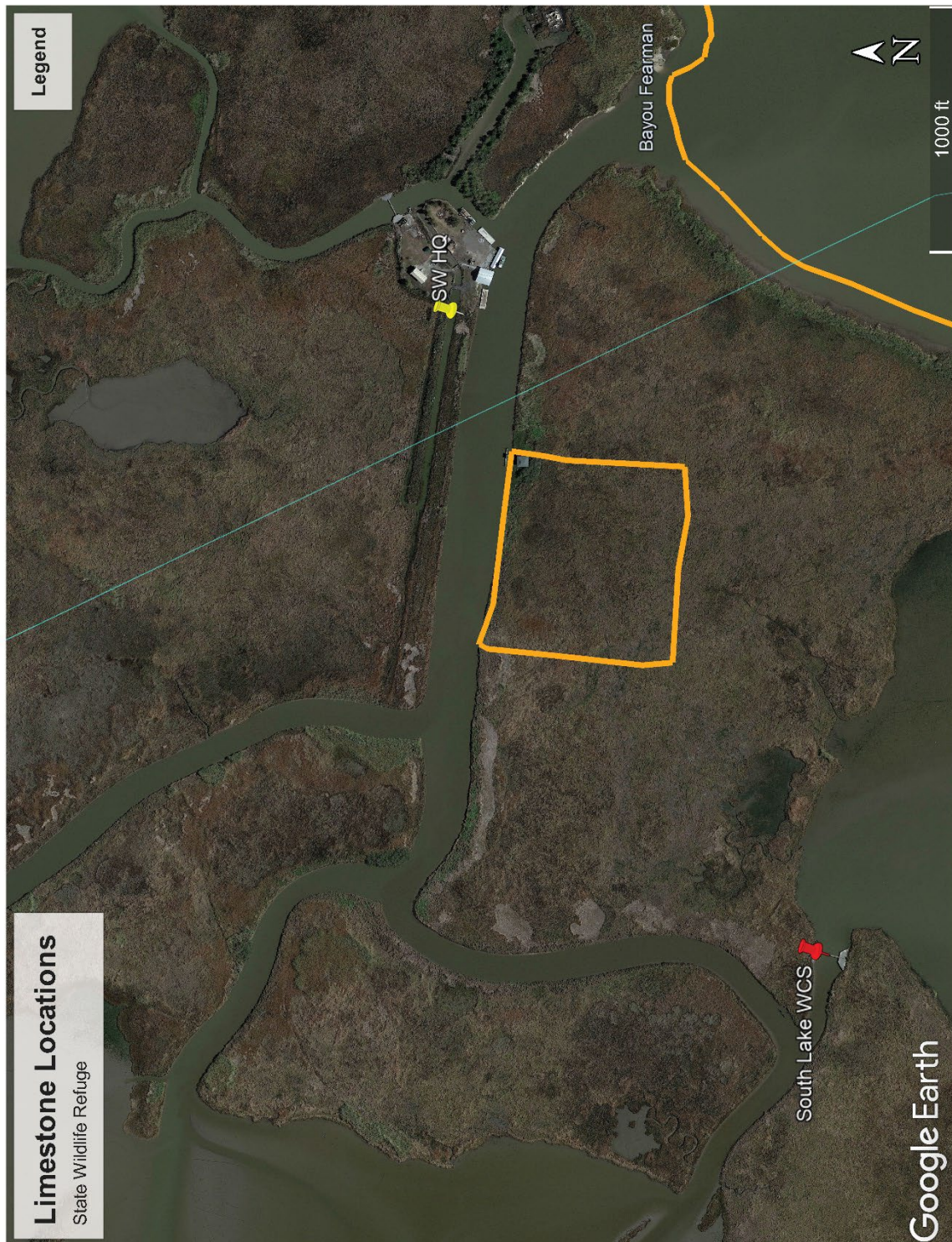


Attachment B – Scope of Work

RFx: 3000025555

Title: Limestone - LDWF

MAP OF SITES ON STATE WILDLIFE REFUGE



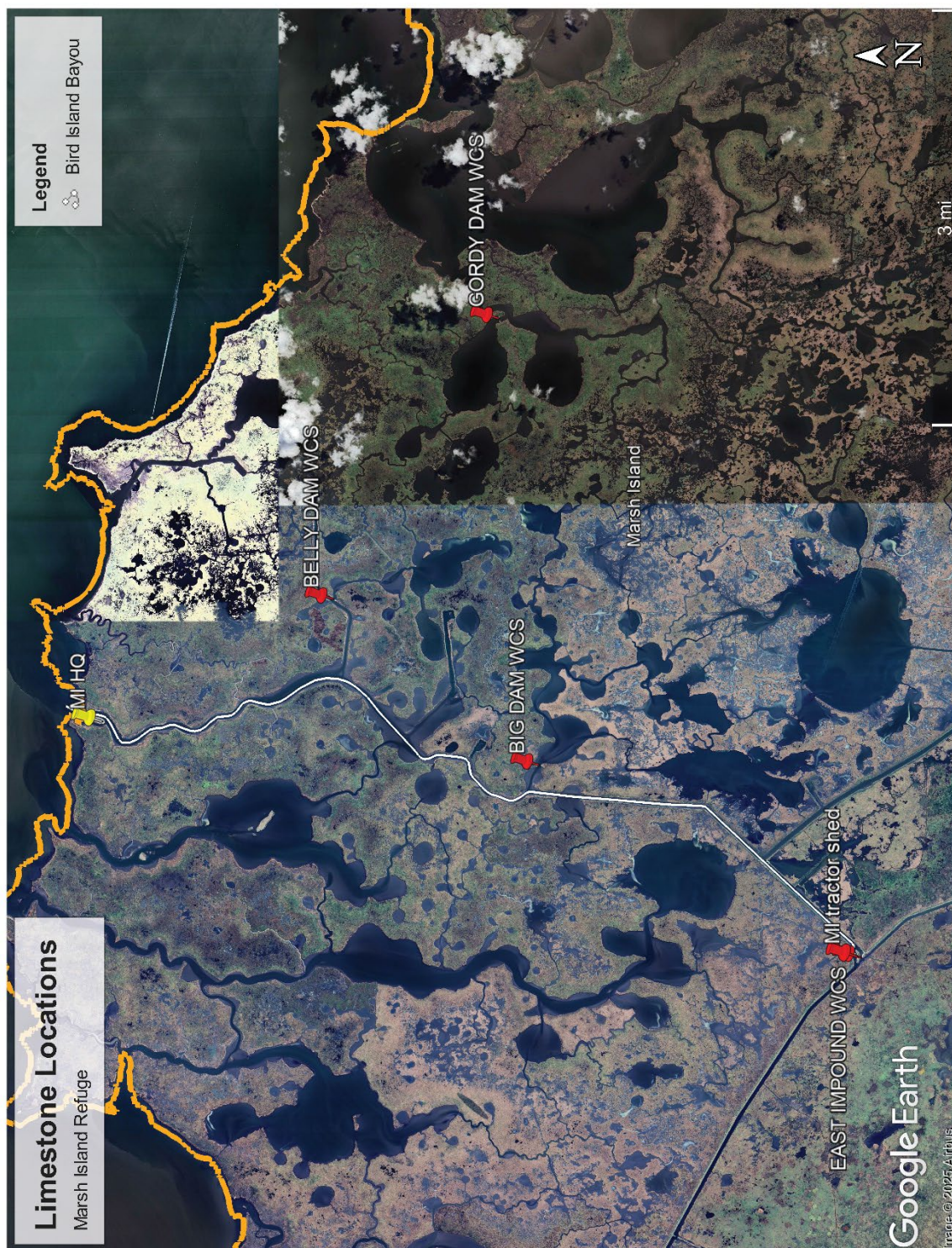


Attachment B – Scope of Work

RFx: 3000025555

Title: Limestone - LDWF

Map of sites on Marsh Island Refuge





Attachment B – Scope of Work

RFx: 3000025555

Title: Limestone - LDWF

WATER DEPTH LOCATIONS TAKEN FOR GORDY DAM WCS ACCESS ON MARSH ISLAND REFUGE

