



ST. TAMMANY PARISH

MICHAEL B. COOPER
PARISH PRESIDENT

September 29, 2025

Please find the following addendum to the below-mentioned RFP.

Addendum No.: 1

RFP#: 25-8-3

Project Name: Abandoned Vessel Removal

Bid Due Date: Thursday, October 2, 2025

GENERAL INFORMATION:

Please REFERENCE-Plats for DNR P20250333 St Tammany Vessel Removal: Figures 1.0-6 Document, includes Topo Vicinity Map, Existing Conditions, and Vessel Locations for each vessel. **Please NOTE- Vessel No. 6 in the Plats document was removed from the list.**

QUESTIONS & ANSWERS:

Question 1. What materials are the vessels made of?

Answer 1. Materials include steel, metal, concrete, wood, and fiberglass.

Question 2. How much hazardous waste is expected to be present?

Answer 2. Please reference attachment- Figure 6: Vessel Removal Notes

Question 3. Where is the "designated staging area" located?

Answer 3. Proposer will be responsible for locating a staging and transport site for approval.

Question 4. Do we need to provide our own dockage?

Answer 4. Proposer will be responsible for locating a staging and transport site for approval.

Question 5. Are there local landfills that are preferred over others?



ST. TAMMANY PARISH

MICHAEL B. COOPER
PARISH PRESIDENT

Answer 5. No, but the selected disposal location must be approved.

Question 6. What are the parameters of the "pre-abandonment condition" requirement?

Answer 6. Please reference attachment- Figure 6: Vessel Removal Notes.

Question 7. The scope of work states "restore removal sites to pre-removal environmental conditions". Can you elaborate? I'm sure this is talking about any disturbances created from the removal process, but does it also include damages caused by the vessel itself from where it has been sitting?

Answer 7. Restoring the disturbances created by the removal process is required. Please reference attachment-Figure 6: Vessel Removal Notes.

Question 8. The scope includes conducting site inspections with a qualified biologist present throughout the operation. Will this biologist be supplied by the LDWF or should the labor for having one on site be included in the proposal?

Answer 8. Provider is required to supply a qualified biologist as part of their proposal.

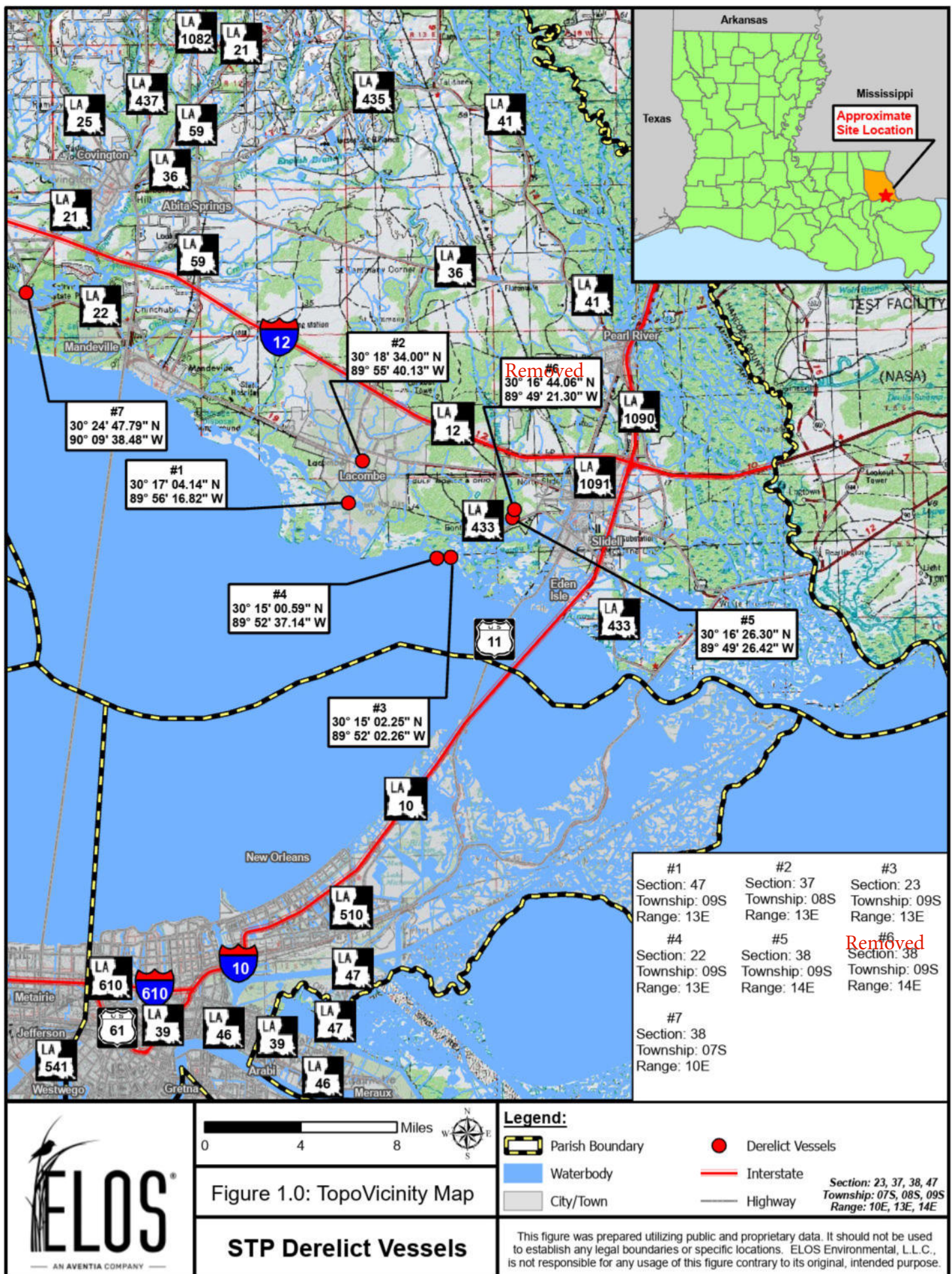
Question 9. Does the Parish have an engineer's estimate of the work or total budgeted/grant amount? If so, how much?

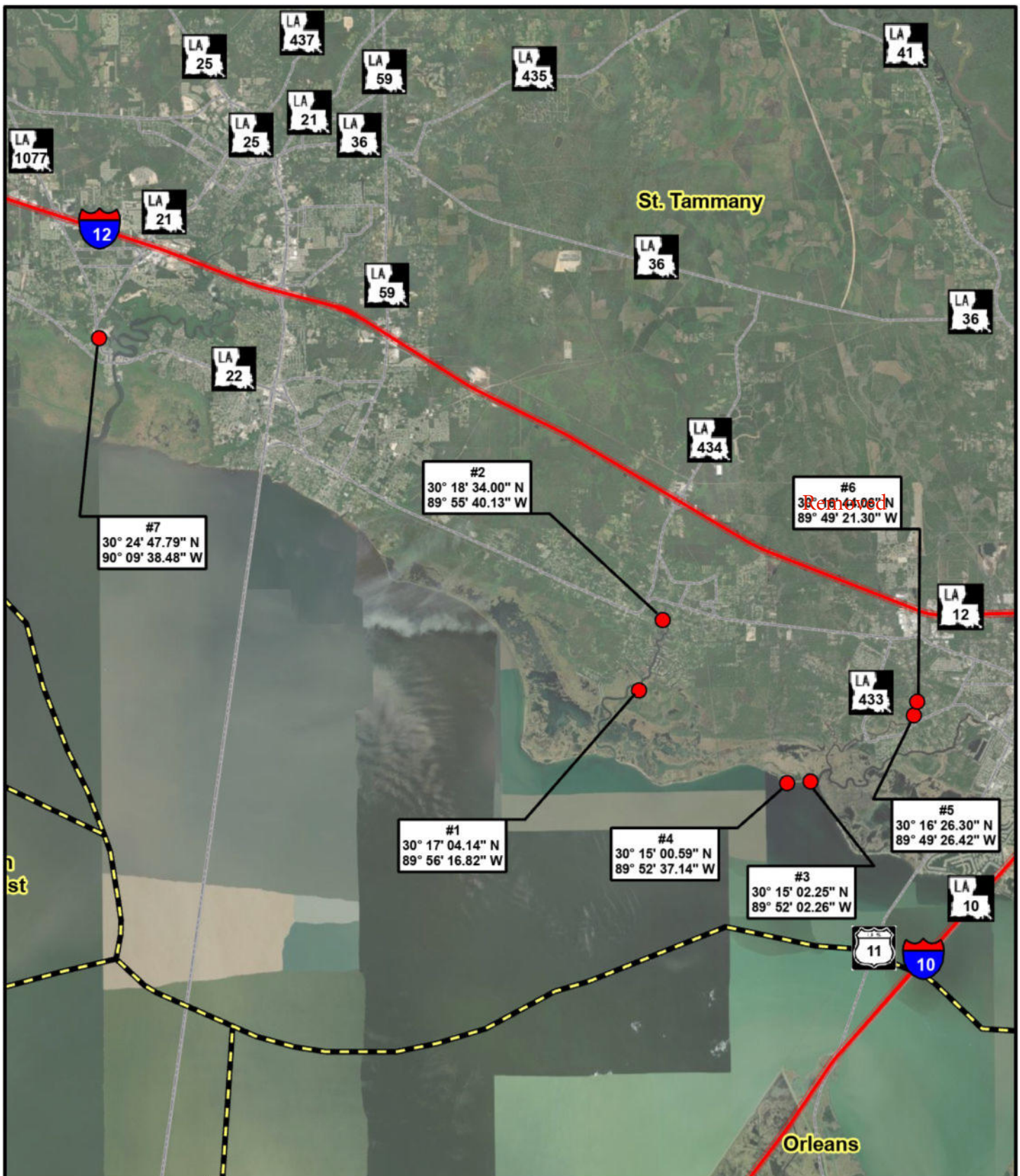
Answer 9. Estimated cost is \$100,000.00


ATTACHMENTS

1. Figures 1.0-6
2. Pictures

End of Addendum # 1








ELOS
— AN AVENTIA COMPANY —

0 2 4 Miles



Legend:

- Derelict Vessels
- Parish Boundary
- Interstate
- Highway

Figure 2.0: Existing Conditions

STP Derelict Vessels

Section: 23, 37, 38, 47
Township: 07S, 08S, 09S
Range: 10E, 13E, 14E

This figure was prepared utilizing public and proprietary data. It should not be used to establish any legal boundaries or specific locations. ELOS Environmental, L.L.C., is not responsible for any usage of this figure contrary to its original, intended purpose.

Label	Section	Township	Range	Latitude	Longitude	Parish
1	47	09S	13E	30° 17' 03.14" N	89° 56' 16.82" W	St. Tammany
2	37	08S	13E	30° 18' 34.00" N	89° 55' 40.13" W	St. Tammany
3	23	09S	13E	30° 15' 02.25" N	89° 52' 02.26" W	St. Tammany
4	22	09S	13E	30° 15' 00.59" N	89° 52' 37.14" W	St. Tammany
5	38	09S	14E	30° 16' 26.30" N	89° 49' 26.42" W	St. Tammany
Removed 6	38	09S	14E	30° 16' 44.06" N	89° 49' 21.30" W	St. Tammany
7	38	07S	10E	30° 24' 47.79" N	90° 09' 38.48" W	St. Tammany

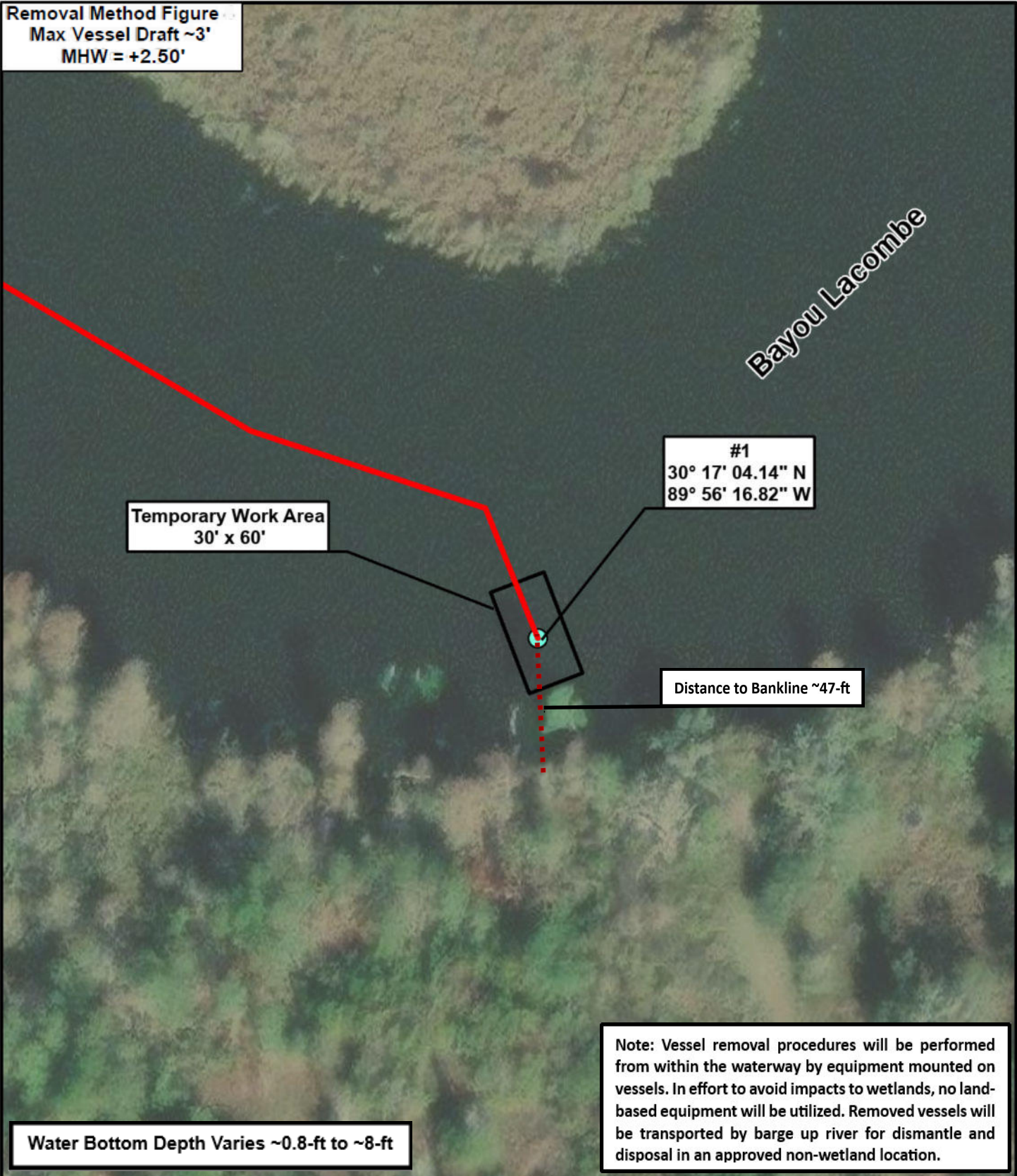








Figure 2.1: Existing Conditions

STP Derelict Vessels

This figure was prepared utilizing public and proprietary data. It should not be used to establish any legal boundaries or specific locations. ELOS Environmental, L.L.C., is not responsible for any usage of this figure contrary to its original, intended purpose.

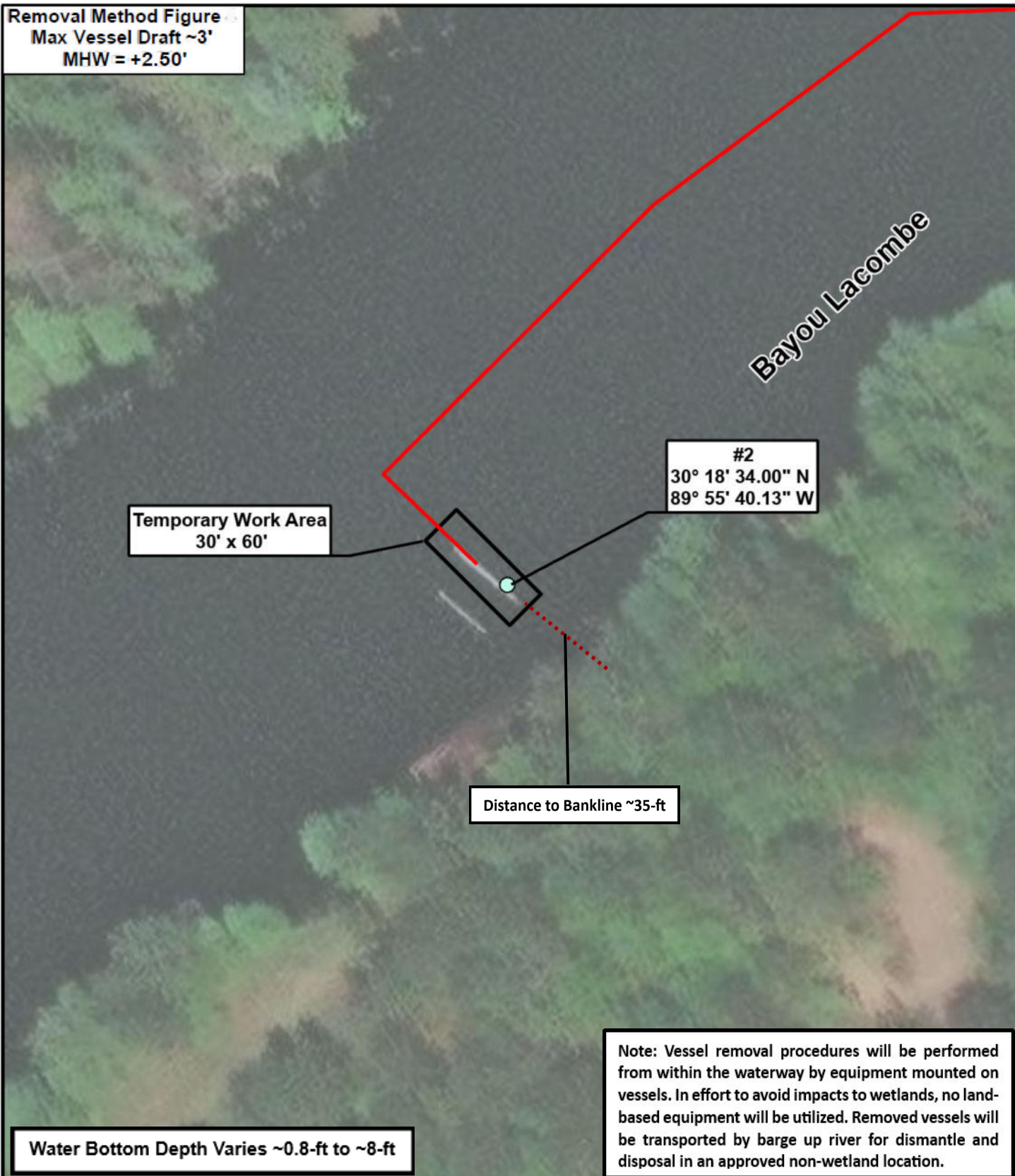
Removal Method Figure
Max Vessel Draft ~3'
MHW = +2.50'



 AN AVENTIA COMPANY	 0 50 100 Feet	 Legend:  Temporary Work Area  Derelict Vessels  Access Route	
	Figure 3.0: Vessel Location		
	STP Derelict Vessels		

This figure was prepared utilizing public and proprietary data. It should not be used to establish any legal boundaries or specific locations. ELOS Environmental, L.L.C., is not responsible for any usage of this figure contrary to its original, intended purpose.

Removal Method Figure
Max Vessel Draft ~3'
MHW = +2.50'



0 30 60 Feet



Figure 3.1: Vessel Location

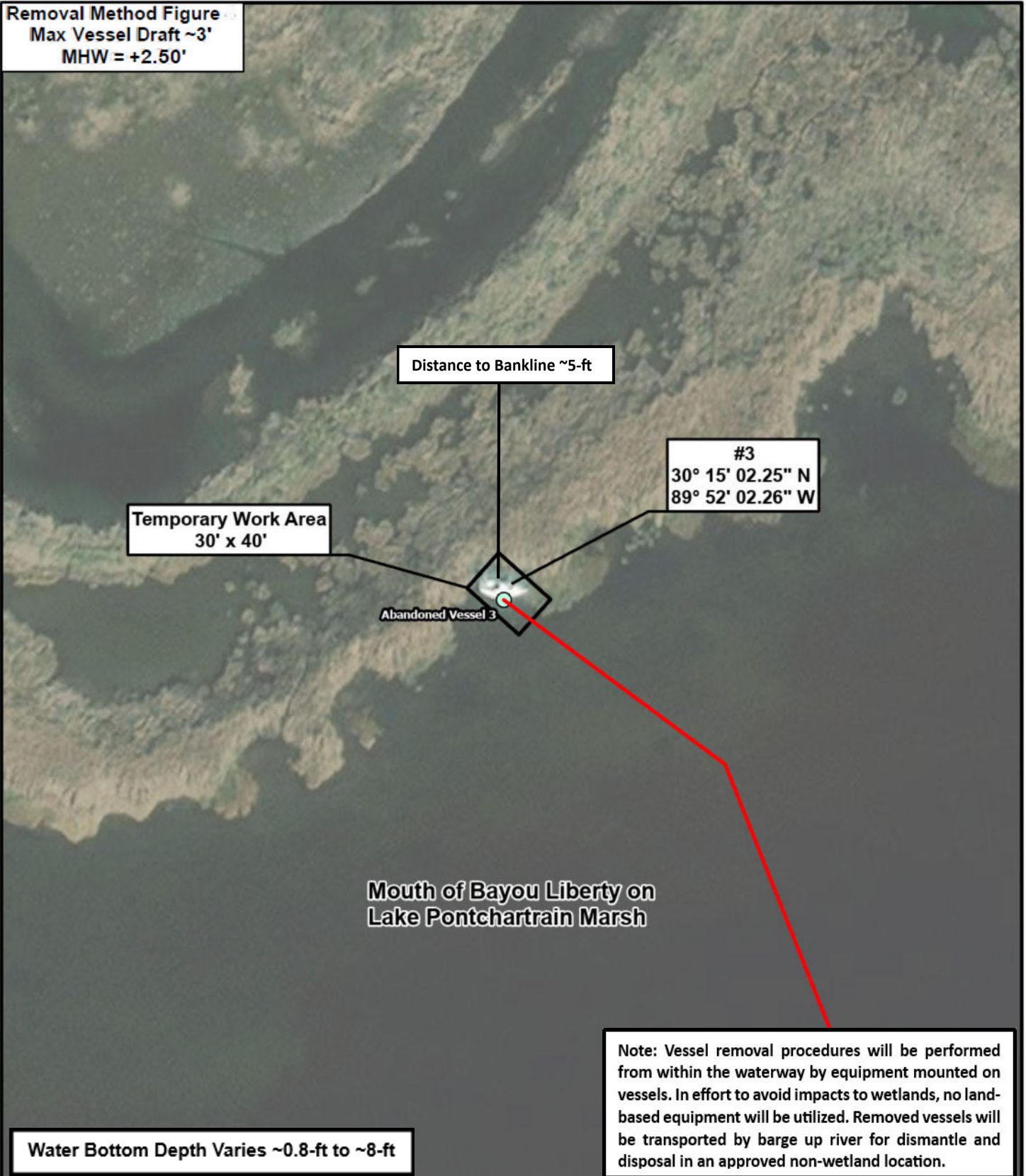
STP Derelict Vessels

Legend:

- Temporary Work Area
- Derelict Vessels
- Access Route

This figure was prepared utilizing public and proprietary data. It should not be used to establish any legal boundaries or specific locations. ELOS Environmental, L.L.C., is not responsible for any usage of this figure contrary to its original, intended purpose.

Removal Method Figure
Max Vessel Draft ~3'
MHW = +2.50'



Water Bottom Depth Varies ~0.8-ft to ~8-ft

Note: Vessel removal procedures will be performed from within the waterway by equipment mounted on vessels. In effort to avoid impacts to wetlands, no land-based equipment will be utilized. Removed vessels will be transported by barge up river for dismantle and disposal in an approved non-wetland location.



Figure 3.2: Vessel Location

STP Derelict Vessels

Legend:

- Temporary Work Area
- Derelict Vessels
- Access Route

This figure was prepared utilizing public and proprietary data. It should not be used to establish any legal boundaries or specific locations. ELOS Environmental, L.L.C., is not responsible for any usage of this figure contrary to its original, intended purpose.

Removal Method Figure

Max Vessel Draft ~3'

MHW=+2.50'

Distance to Bankline ~16-ft

Temporary Work Area
30' x 40'

#4
30° 15' 00.59" N
89° 52' 37.14" W

**Mouth of Bayou Liberty on
Lake Pontchartrain Marsh**

Water Bottom Depth Varies ~0.8-ft to ~8-ft

Note: Vessel removal procedures will be performed from within the waterway by equipment mounted on vessels. In effort to avoid impacts to wetlands, no land-based equipment will be utilized. Removed vessels will be transported by barge up river for dismantle and disposal in an approved non-wetland location.



0 50 100 Feet



Figure 3.3: Vessel Location

STP Derelict Vessels

Legend:

Temporary Work Area

Derelict Vessels

Access Route

This figure was prepared utilizing public and proprietary data. It should not be used to establish any legal boundaries or specific locations. ELOS Environmental, L.L.C., is not responsible for any usage of this figure contrary to its original, intended purpose.

Removal Method Figure
Max Vessel Draft ~3'
MHW = +2.50'

Dead End Canal Near Whitney House

Temporary Work Area
30' x 40'

#5
30° 16' 26.30" N
89° 49' 26.42" W

Distance to Bankline ~17-ft

Water Bottom Depth Varies ~0.8-ft to ~8-ft

Note: Vessel removal procedures will be performed from within the waterway by equipment mounted on vessels. In effort to avoid impacts to wetlands, no land-based equipment will be utilized. Removed vessels will be transported by barge up river for dismantle and disposal in an approved non-wetland location.



0 30 60 Feet



Figure 3.4: Vessel Location

STP Derelict Vessels

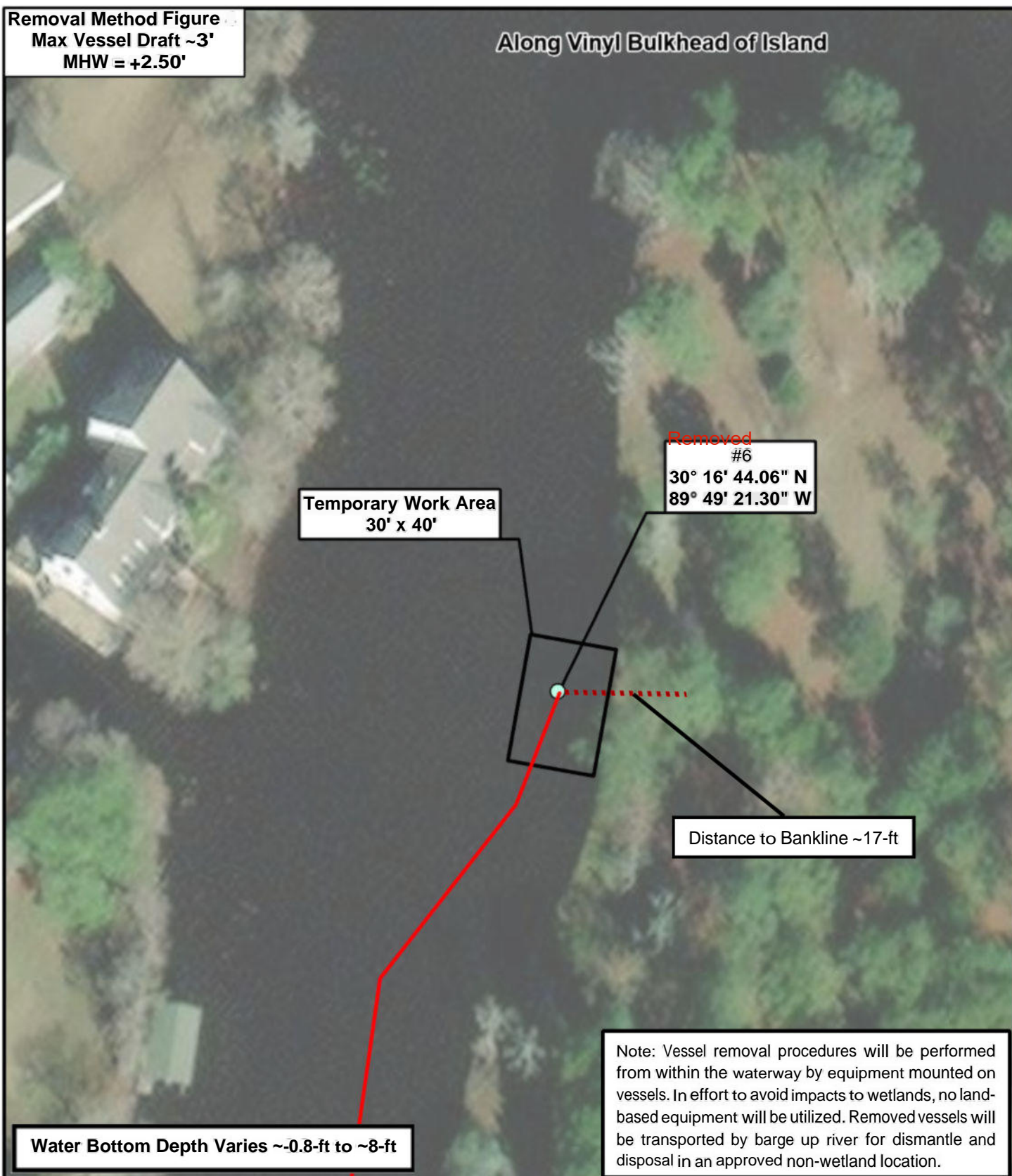
Legend:

- Temporary Work Area
- Derelict Vessels
- Access Route

This figure was prepared utilizing public and proprietary data. It should not be used to establish any legal boundaries or specific locations. ELOS Environmental, L.L.C., is not responsible for any usage of this figure contrary to its original, intended purpose.

Removal Method Figure
Max Vessel Draft ~3'
MHW = +2.50'

Along Vinyl Bulkhead of Island



Water Bottom Depth Varies ~-0.8-ft to ~8-ft

Distance to Bankline ~17-ft

Removed
#6
30° 16' 44.06" N
89° 49' 21.30" W

Temporary Work Area
30' x 40'

Note: Vessel removal procedures will be performed from within the waterway by equipment mounted on vessels. In effort to avoid impacts to wetlands, no land-based equipment will be utilized. Removed vessels will be transported by barge up river for dismantle and disposal in an approved non-wetland location.



0 30 60 Feet



Legend:

Temporary Work Area

Derelict Vessels

Access Route


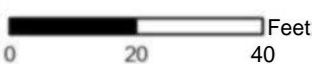




Figure 3.5: Vessel Location

STP Derelict Vessels

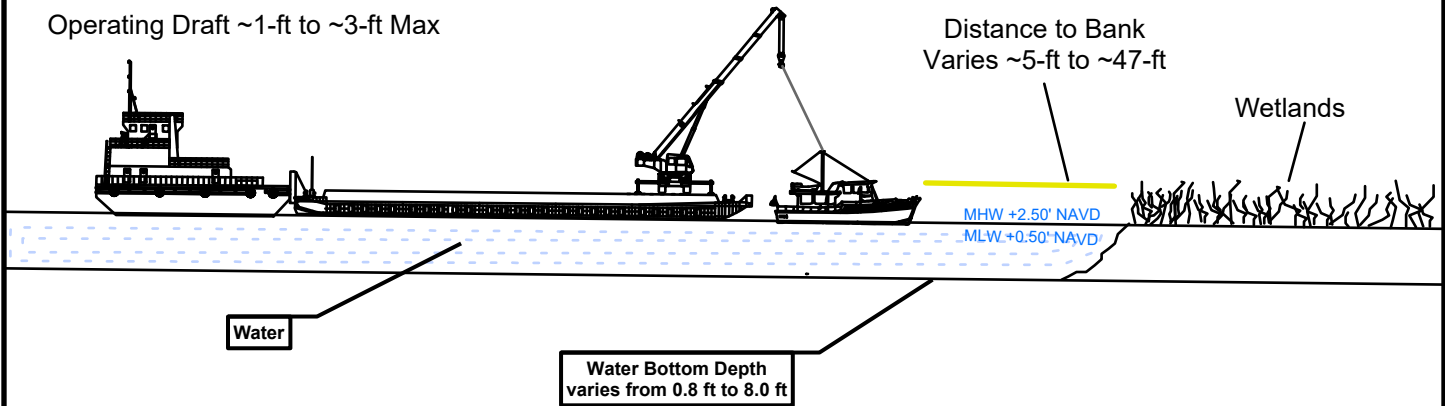
This figure was prepared utilizing public and proprietary data. It should not be used to establish any legal boundaries or specific locations. ELOS Environmental, L.L.C., is not responsible for any usage of this figure contrary to its original, intended purpose.


Removal Method Figure
Max Vessel Draft ~3'
MHW = +2.50'



 AN AVENTIA COMPANY	 0 20 40 Feet	 Legend:  Temporary Work Area  Derelict Vessels  Access Route	
	Figure 3.6: Vessel Location		
	STP Derelict Vessels		
This figure was prepared utilizing public and proprietary data. It should not be used to establish any legal boundaries or specific locations. ELOS Environmental, L.L.C., is not responsible for any usage of this figure contrary to its original, intended purpose.			

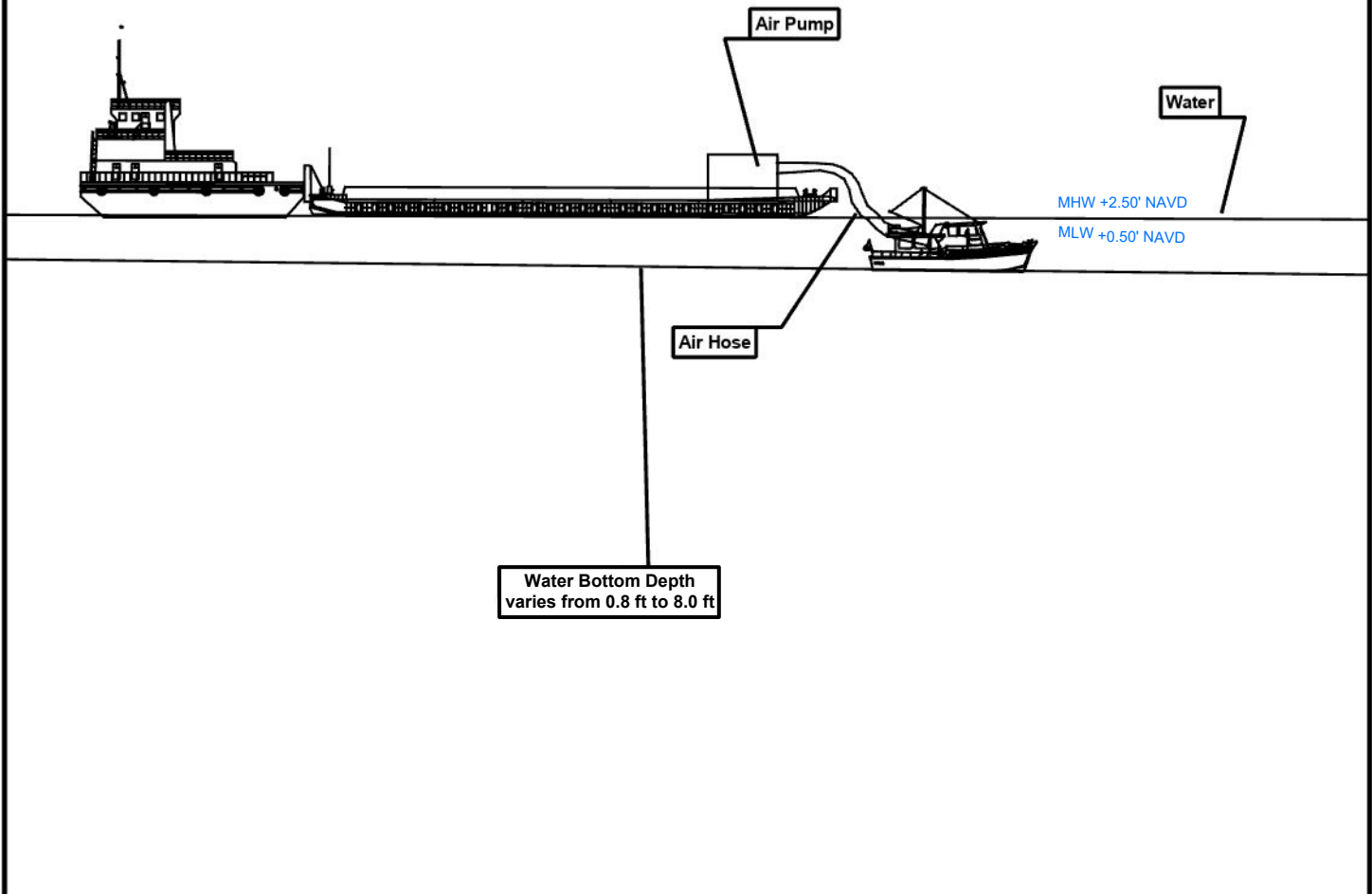
Typical Section



 <p>http://elosenv.com/</p>	Scale = Not to Scale	<p>Note: No work will occur within wetland areas as all derelict vessels are located within waterways. No vessels to be removed are located on land and no wetland impacts are anticipated.</p>
	Figure 4.0: Typical Section	
	STP Derelict Vessels	<p>This figure was prepared utilizing public and proprietary data. It should not be used to establish any legal boundaries or specific locations. ELOS Environmental, L.L.C., is not responsible for any usage of this figure contrary to its original, intended purpose.</p>

Typical Section

Operating Draft ~1-ft to ~3-ft Max



Scale = Not to Scale

Figure 5.0: Typical Section

STP Derelict Vessels

Note: No work will occur within wetland areas as all derelict vessels are located within waterways. No vessels to be removed are located on land and no wetland impacts are anticipated.

This figure was prepared utilizing public and proprietary data. It should not be used to establish any legal boundaries or specific locations. ELOS Environmental, L.L.C., is not responsible for any usage of this figure contrary to its original, intended purpose.

Vessel Removal Notes

1. Crane mounted on extraction barge will be utilized for removal of derelict vessels from within the waterways.
2. Removal operations will take place during high tide to ensure no prop washing or other incidental water bottom disturbances occur due to draft of extraction vessels, shafts, propellers, or rudders during access and vessel removal procedures.
3. Precautionary oil boom will be deployed around each vessel prior to extraction. Oil remediation supplies will be on board to support removal activities, if necessary.
4. Extraction vessels will be equipped with air compressor and deployable inflatable airbags to provide extra flotation for maneuvering derelict vessels into deeper water if necessary to ensure the shafts, propellers, and/or rudders are lifted out of the mud to avoid disturbance of the water bottom.
5. Extraction vessels will be equipped with engine-driven water pumps to remove water from inside the hull of derelict vessels, if intact.
6. All components of the derelict vessels will be placed upon the deck of the extraction barge and transported upstream to the non-wetland demolition/disposal site.
7. If it is determined that derelict vessels are undamaged and capable of navigating without taking on additional water, vessels will be towed upstream via tugboat for disposal.



Figure 6: Vessel Removal Notes

STP Derelict Vessels

Note: No work will occur within wetland areas as all derelict vessels are located within waterways. No vessels to be removed are located on land and no wetland impacts are anticipated.

This figure was prepared utilizing public and proprietary data. It should not be used to establish any legal boundaries or specific locations. ELOS Environmental, L.L.C., is not responsible for any usage of this figure contrary to its original, intended purpose.











