

Addendum Number # 2

September 4, 2025

A.O. WILLIAMS MODULAR CAMPUS
SU Ag Center
Southern University and A&M College
Baton Rouge, Louisiana 70813

Bid # 50016-10344

10:30 A.M. September 29, 2025

The following modifications to the referenced project shall be incorporated into the original specifications and/or plans. Unless a change is specifically made by addendum, the specifications and/or plans as issued shall govern.

Bids shall be accepted in the Purchasing Department by above date and time

Note: Vendors are required to acknowledge receipt of this addendum on the Louisiana Uniform Public Work Bid Form

Attachments:

- Specifications and Drawings modifications
- Project budget
- Manufacturers approval statement
- Drawings

Note: Contact Holly & Smith Architects regarding the attached drawings
Hammond / New Orleans / Lafayette
2302 Magazine Street / New Orleans, La 70130 / Tel 504.585.1315



Linda Antoine, Director of Purchasing

Date 9/4/25

A.O. WILLIAMS MODULAR CAMPUS

SOUTHERN UNIVERSITY AND AGRICULTURAL & MECHANIC COLLEGE

Addendum 02

H/S Project: 25022

Addendum: 02

Date: 8.27.2025

This Addendum forms a part of the Contract Documents and modifies the original specifications and drawings issued for bidding to the extent noted hereinafter. All other provisions of the Bid Documents shall remain unchanged.

Careful note of this Addendum will be taken by all parties of interest so that proper allowances are made in all computations, estimates and contracts and so that all trades affected are fully advised in the performance of the work that will be required of them. Acknowledge receipt of this Addendum on the Bid Form.

General

2.01 None.

Modifications to Previous Addenda

2.02 None.

Clarifications

2.03 **Project budget:** \$3,960,600.

This amount is a lump sum that includes installation of the buildings, monthly lease payments for a thirty-six (36) month term, and removal of the buildings, including termination of utilities, at the end of the lease period.

Modifications to the Procurement and Contracting Requirements

2.04 None.

Modifications to the Specifications

2.05 None.

Modifications to the Drawings

2.06 Refer to Bid Documents dated 07/24/2025. See sheets E1.0, E1.1, E1.2, E2.0, E2.1, E3.0, and E4.0. Delete these sheets in their entirety and insert revised sheets E1.0, E1.1, E1.2, E2.0, E2.1, E3.0, and E4.0 dated 08/27/2025, enclosed herein as part of this addendum.

Prior Approvals

The following manufacturers, equipment, materials, or products have been Prior Approved for use on this project. Approvals are based upon the opinion, knowledge, information and belief of the Architect at the time of issuance of this Addendum and reliance upon the data submitted. Approvals are therefore interim in nature and subject to reconsideration as additional data, materials, workmanship, and coordination with other work are observed and reviewed. All items allowed by this Addendum are subject to the full provisions of the original contract documents including all modifications thereto and shall be warranted as substitutions conforming with the contract documents as provided for in the General Conditions. In proposing items allowed by this Addendum, bidder assumes all risk, costs, and responsibility for item's final acceptance, performance, and integration into the work.

END OF ADDENDUM.



1 VICINITY MAP

DISCLAIMER
 PRIOR TO USING THIS DOCUMENT, THE USER SHALL CONDUCT A SURVEY OF ALL UNDERGROUND UTILITIES IN THE AREA, PRIOR TO ANY CONSTRUCTION. THE USER SHALL BE RESPONSIBLE FOR ANY DAMAGE TO OR INTERFERENCE WITH ANY UTILITIES. THE USER SHALL BE RESPONSIBLE FOR ANY DAMAGE TO OR INTERFERENCE WITH ANY UTILITIES. THE USER SHALL BE RESPONSIBLE FOR ANY DAMAGE TO OR INTERFERENCE WITH ANY UTILITIES.



2 SITE PLAN



PARISH
 ENGINEERING
 3000 Innovation Park Drive
 Baton Rouge, LA 70802
 225.382.0371
 parisheng.com

HOLLY & SMITH
 ARCHITECTS
 BAPTISTON
 T 225.443.3248
 INFO@HSMARCH.COM
 LAFAYETTE
 T 227.278.2418
 www.hollysmith.com

SOUTHERN UNIVERSITY AND ARM COLLEGE
BATON ROUGE CAMPUS - AO WILLIAMS
MODULAR CLASSROOMS AND OFFICES
 Baton Rouge Louisiana



NO. DESCRIPTION DATE
 1. APPROVAL 2. 02/12/2025

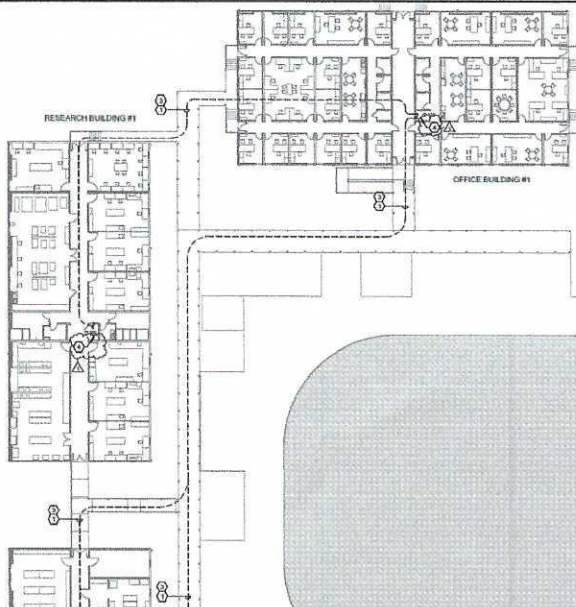
PROJECT NO. 20202
 PHASE B/C
 DATE 02/12/2025
 PROJECT MANAGER C/DO
 QUALITY CONTROL C/DO

This drawing is an instrument of service, it is not to be reproduced, altered, or used in any way without the express written consent of the Engineer, Holly & Smith Architects, APC.

BID DOCUMENTS

E1.0
 OVERALL TEMP BUILDINGS -
 020 PLAN

H/S



CONTRACTOR NOTE: THE AREA COVERED BETWEEN THE LARKINS
MODULAR BUILDINGS SHALL BE BURRED

- ELECTRICAL REQUIREMENTS**
- 1. ELECTRICAL SYMBOLS AND NOTATION SHALL BE AS SHOWN ON THE PROJECT SPECIFICATIONS. SHALL BE PROVIDED FOR ALL ELECTRICAL SYMBOLS AND NOTATION.
 - 2. MAIN DISTRIBUTION FRAME LOCATION.
 - 3. ELECTRICAL PANELS, PLANNING AND DETAILING SHALL BE PROVIDED FOR ALL ELECTRICAL SYMBOLS AND NOTATION. SHALL BE PROVIDED FOR ALL ELECTRICAL SYMBOLS AND NOTATION.
 - 4. SEE ELECTRICAL SYMBOLS AND NOTATION.

HOLLY & SMITH ARCHITECTS

REGISTERED
T. 504.343.3310
F. 504.343.3311
L. 504.343.3312
V. 504.343.3313

**SOUTHERN UNIVERSITY AND A&M COLLEGE
BATON ROUGE CAMPUS - A.O. WILLIAMS
MODULAR CLASSROOMS AND OFFICES**

Baton Rouge Louisiana

NO. DESCRIPTION DATE



SOUTHERN UNIVERSITY AND A&M COLLEGE
BATON ROUGE CAMPUS - A.O. WILLIAMS
MODULAR CLASSROOMS AND OFFICES
Baton Rouge Louisiana



NO.	DESCRIPTION	DATE
1	ACCEVED-M-2	SECTION

PROJECT NO.	25022
PHASE	RD
DATE	11/24/2025
PROJECT MANAGER	DVE
QUALITY CONTROL	SPB

This drawing, as an instrument of service, is not shall remain the property of the Architect and shall not be reproduced, published, or used in any way without the permission of the Architect.
G. Hardy & Son, Inc., Architects, A.P.C.

**BID
DOCUMENTS**

E1.2

CITY LIGHTING

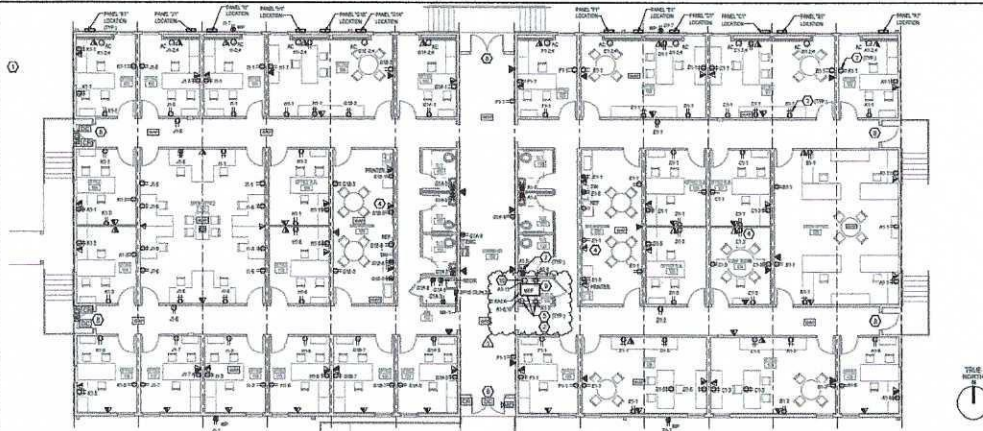
S/H



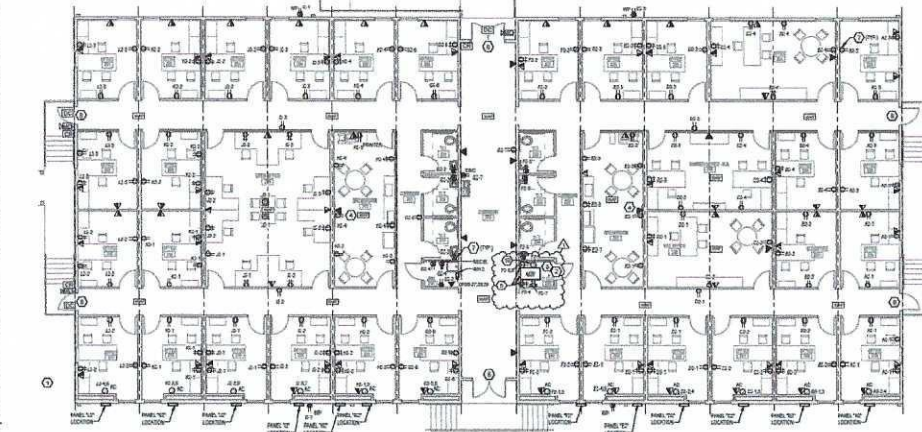
2600 Intercession Park Dr.

05/05/2015 11:42:27 AM

C:\Users\hsmith\Documents\2015\2015 AD Williams - Temp Buildings - 11/10/2015.rvt



1 OFFICE BUILDING #1 - POWER PLAN
1/8" = 1'-0"



2 OFFICE BUILDING #2 - POWER PLAN
1/8" = 1'-0"

The graphic scale at the bottom left corner of this drawing must include "TV" abbreviation all listed scales are null and void.

- ELECTRICAL SYMBOLS**
- 1. UNLESS OTHERWISE NOTED, ALL ELECTRICAL SYMBOLS ARE TO BE INSTALLED IN ACCORDANCE WITH THE NATIONAL ELECTRICAL CODE (NEC) AND THE ILLINOIS ELECTRICAL CODE (IEC).
 - 2. ALL ELECTRICAL SYMBOLS ARE TO BE INSTALLED IN ACCORDANCE WITH THE NATIONAL ELECTRICAL CODE (NEC) AND THE ILLINOIS ELECTRICAL CODE (IEC).
 - 3. ALL ELECTRICAL SYMBOLS ARE TO BE INSTALLED IN ACCORDANCE WITH THE NATIONAL ELECTRICAL CODE (NEC) AND THE ILLINOIS ELECTRICAL CODE (IEC).
 - 4. ALL ELECTRICAL SYMBOLS ARE TO BE INSTALLED IN ACCORDANCE WITH THE NATIONAL ELECTRICAL CODE (NEC) AND THE ILLINOIS ELECTRICAL CODE (IEC).
 - 5. ALL ELECTRICAL SYMBOLS ARE TO BE INSTALLED IN ACCORDANCE WITH THE NATIONAL ELECTRICAL CODE (NEC) AND THE ILLINOIS ELECTRICAL CODE (IEC).
 - 6. ALL ELECTRICAL SYMBOLS ARE TO BE INSTALLED IN ACCORDANCE WITH THE NATIONAL ELECTRICAL CODE (NEC) AND THE ILLINOIS ELECTRICAL CODE (IEC).
 - 7. ALL ELECTRICAL SYMBOLS ARE TO BE INSTALLED IN ACCORDANCE WITH THE NATIONAL ELECTRICAL CODE (NEC) AND THE ILLINOIS ELECTRICAL CODE (IEC).
 - 8. ALL ELECTRICAL SYMBOLS ARE TO BE INSTALLED IN ACCORDANCE WITH THE NATIONAL ELECTRICAL CODE (NEC) AND THE ILLINOIS ELECTRICAL CODE (IEC).
 - 9. ALL ELECTRICAL SYMBOLS ARE TO BE INSTALLED IN ACCORDANCE WITH THE NATIONAL ELECTRICAL CODE (NEC) AND THE ILLINOIS ELECTRICAL CODE (IEC).
 - 10. ALL ELECTRICAL SYMBOLS ARE TO BE INSTALLED IN ACCORDANCE WITH THE NATIONAL ELECTRICAL CODE (NEC) AND THE ILLINOIS ELECTRICAL CODE (IEC).

HOLLY & SMITH
ARCHITECTS

1000 UNIVERSITY PARK DRIVE
BATON ROUGE, LOUISIANA 70802
504.388.1212
WWW.HOLLYANDSMITH.COM

SOUTHERN UNIVERSITY AND A&M COLLEGE
BATON ROUGE CAMPUS - A.O. WILLIAMS
MODULAR CLASSROOMS AND OFFICES
Baton Rouge, Louisiana



NO. DESCRIPTION DATE
1. ADDENDUM 1 05/05/2015

PROJECT NO. 201501
PHASE RIG
DATE 05/05/2015
PROJECT MANAGER CHM
QUALITY CONTROL JPC

This drawing, as an instrument of service, is the property of Holly & Smith Architects, P.C. and shall remain the property of the Architect and shall not be reproduced, stored in a retrieval system, or used in any way without the written permission of the Architect.

BID DOCUMENTS



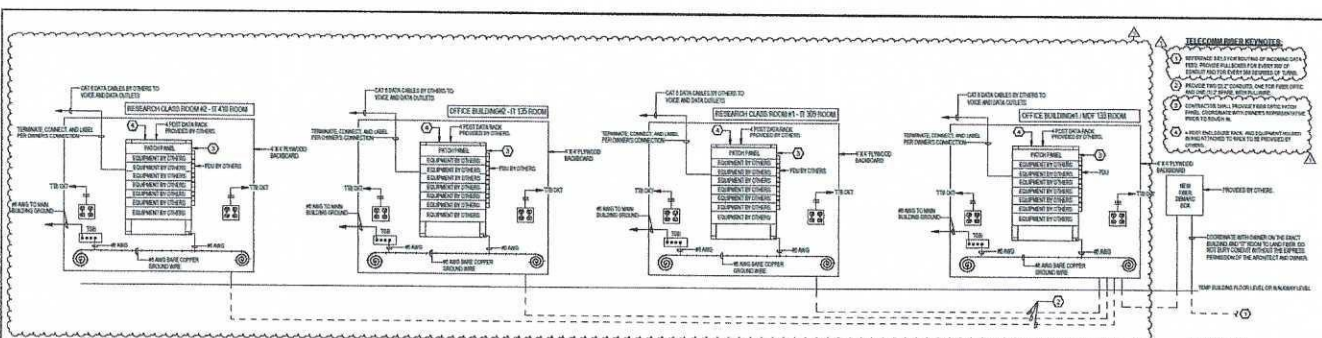
1000 UNIVERSITY PARK DRIVE
BATON ROUGE, LA 70802
504.388.1212
WWW.PARISHENGINEERING.COM

E2.1
POWER PLAN - OFFICE BUILDINGS

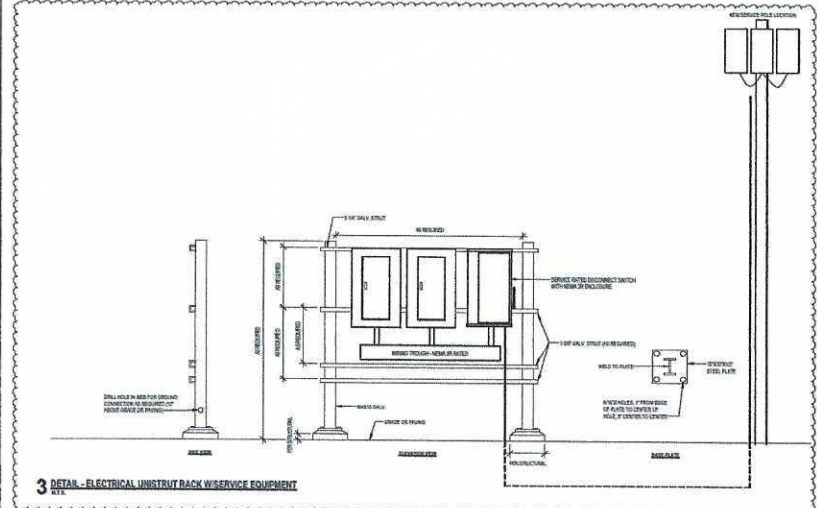
H/S

8/27/2025 5:46 PM

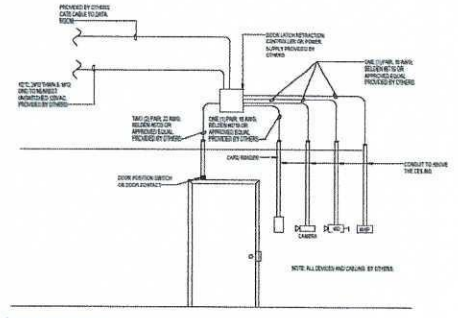
C:\Users\Breen\OneDrive\Documents\25032 AD Williams Temp Building_ghghghghgh.vcl



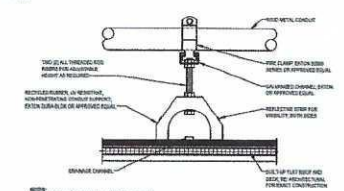
1 DETAIL - MODULAR BUILD IT CLOSET



3 DETAIL - ELECTRICAL UNISTRUT RACK W/ SERVICE EQUIPMENT



4 DETAIL - DOOR ACCESS



2 DETAIL - CONDUIT SUPPORT ON ROOF

HOLLY & SMITH ARCHITECTS
2000 PINE ST. SUITE 200
BATON ROUGE, LA 70802
504.383.1313
www.hollysmith.com

SOUTHERN UNIVERSITY AND A&M COLLEGE
BATON ROUGE CAMPUS - A.O. WILLIAMS
MODULAR CLASSROOMS AND OFFICES
Baton Rouge Louisiana



NO.	DESCRIPTION	DATE
1.	AS SHOWN	8/27/2025

PROJECT NO. 25032
PHASE E4.0
DATE 8/27/2025
PROJECT MANAGER B. BREEN
QUALITY CONTROL B. BREEN
This drawing is an instrument of service, it is not to be used without the approval of the Architect and shall not be reproduced, copied, or used in any way without the permission of the Architect.
Holly & Smith Architects, APC

PARISH ENGINEERING
7000 Lakeshore Park Drive
Baton Rouge, LA 70802
504.383.1313
parisheng.com

E4.0

ELECTRICAL DETAILS

H/S