



The Sewerage & Water Board OF NEW ORLEANS

625 ST. JOSEPH STREET
NEW ORLEANS, LA 70165
504.529.2837 OR 52.WATER
www.swbno.org

June 24, 2025

Addendum No. 1

Your reference is directed to the Invitation to Bid for: **2025-SWB-53 Steel Piping Materials** for the Sewerage and Water Board of New Orleans which proposals are due on **June 25, 2025**, at **11:00 a.m.** CST.

This addendum provides for the following:

1. Extension of Bid Due Date and Bid Opening

- *Bid Due Date and Bid Opening have been extended to due June 30, 2025.*

2. Responses to Questions

a. *For this quantity we will manufacture the pipe from rolled and welded plate in cans., so there is one long seam per can and then several round seams to make the completed piece. I mention this because the language in their spec simply says (1) longitudinal seam. This pipe won't be just one seam that is continuous for the length of the pipe.*

- *It is acceptable to have round seams where the pipe sections are connected together*

b. *The bid says the pipe must be epoxy lined and coated but give no specification for the product or mils required. Can we get clarification, or should we just stipulate what we are using.*

- *Epoxy conforming to the requirements of ASTM B62 (Gulf Metalcoat A or equal to).*

c. *What is the design pressure of this piping system? In order to supply the appropriate restraint harness for the bolted coupling we need to know what pressure is/ must be required to hold.*

- *These are outdoors and operate at very low pressure 10-20 psig. Couplings to be for 200 psi design. Dresser P/N 0038-0065-950 – 72"OD Style 38 Coupling with a 1/2" X 10" middle ring and with plain grade 27 gasket, or equal with restraint harnesses.*

d. *Probably our biggest issue is the quality of the drawings, a number of the notes and dimensions are not legible. Can another clear set be provided, or do you need me to list all the individual issues?*

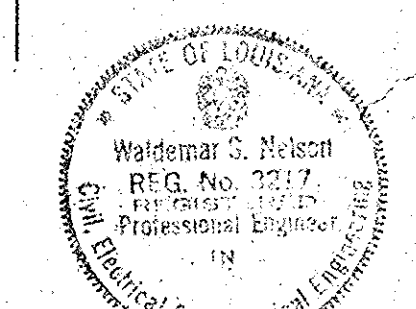
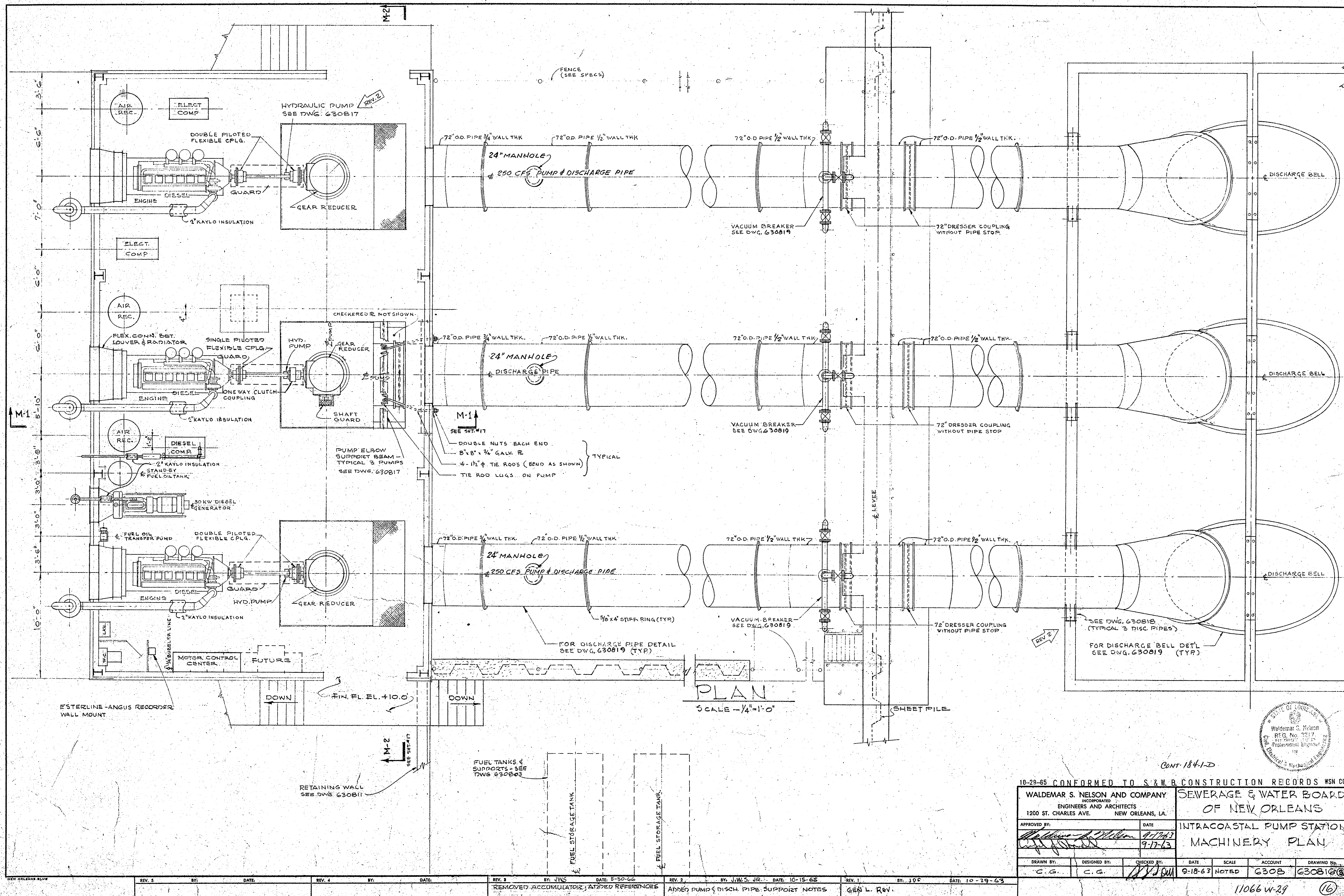
- *Please see attached.*

- e. *NDE is mentioned in the specifications, but the specific type of NDE is not called out. Do we use UT, RT, MT, or PT for the weld examination? Cost is drastic with the different processes.*
- *One hundred percent of all field welds shall be inspected by radiographic examinations, and such field welds shall be inspected for 100 percent of the circumference. Vendor to develop and maintain a complete list of QC testing, The inspection and testing of the steel pipe and the lining and coating shall be in accordance with the requirements of AWWA C-200 and AWWA C-205 applicable thereto.*
- f. *Do you have a preferred coating manufacturer for the Epoxy coating and the color is not specified, gray or white are the two colors available?*
- *Epoxy conforming to the requirements of ASTM B62 (Gulf Metalcoat A or equal to). Color shall be Gray.*

The changes, additions, and/or deletions included herein are hereby made part of the solicitation documents for 2025-SWB-53 Steel Piping Materials as fully and completely as if the same were set forth therein. The bidder shall be responsible for having knowledge of all addenda issued for this ITB.

This addendum consists of two (2) pages and one (3) attachments.

***** END OF ADDENDUM *****



10-28-65 CONFORMED TO S&W.B. CONSTRUCTION RECORDS WSN CO

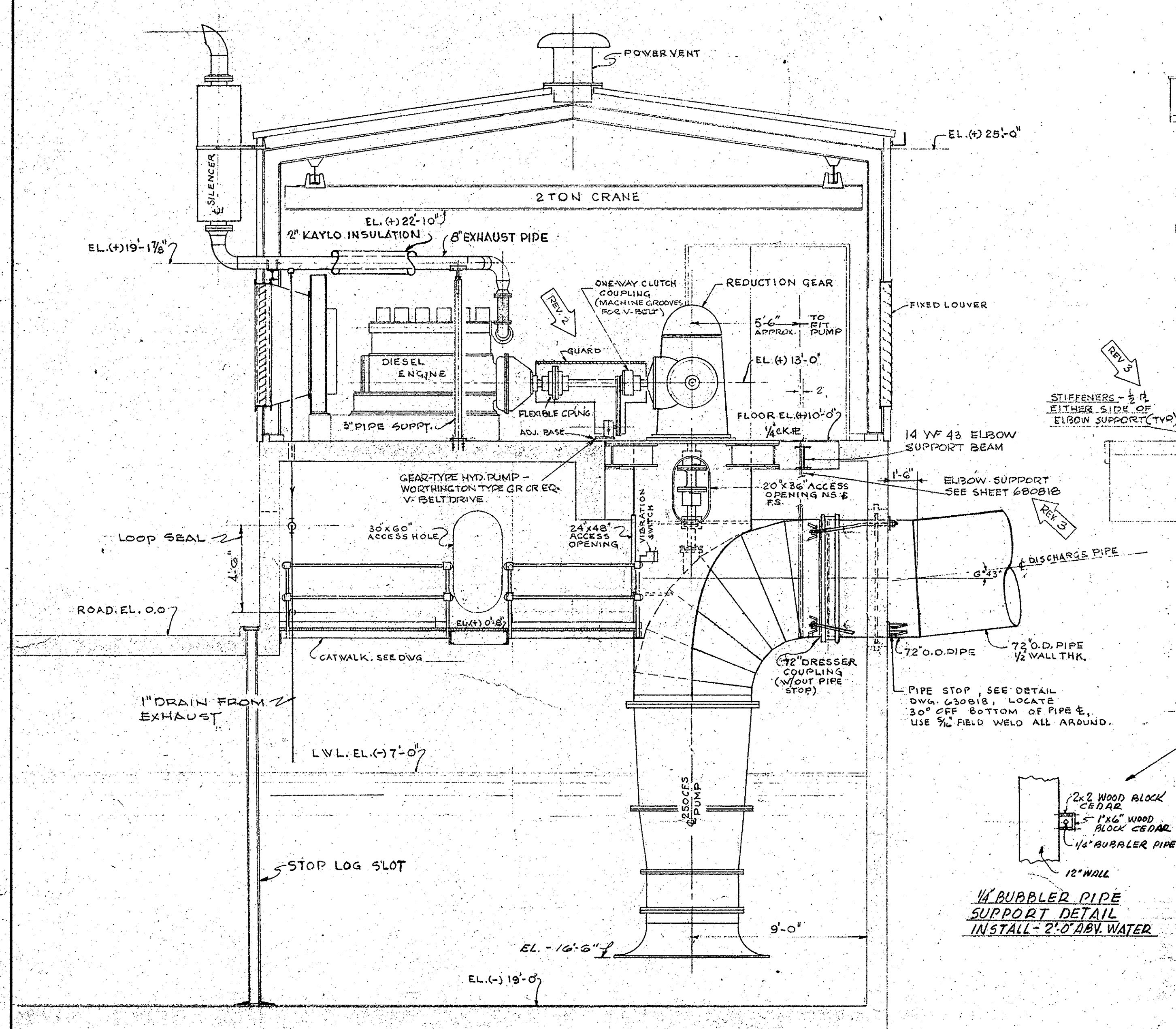
WALDEMAR S. NELSON AND COMPANY
INCORPORATED
ENGINEERS AND ARCHITECTS
1200 ST. CHARLES AVE. NEW ORLEANS, LA.

SEWERAGE & WATER BOARD OF NEW ORLEANS

INTRACOASTAL PUMP STATION MACHINERY PLAN

APPROVED BY:	DATE:
<i>Waldemar S. Nelson</i>	9-17-63
DRAWN BY:	DESIGNED BY:
C.G.	C.G.
CHECKED BY:	DATE:
<i>JWS</i>	9-18-63
SCALE:	ACCOUNT:
NOTED	G308
DRAWING No.:	
G30818	

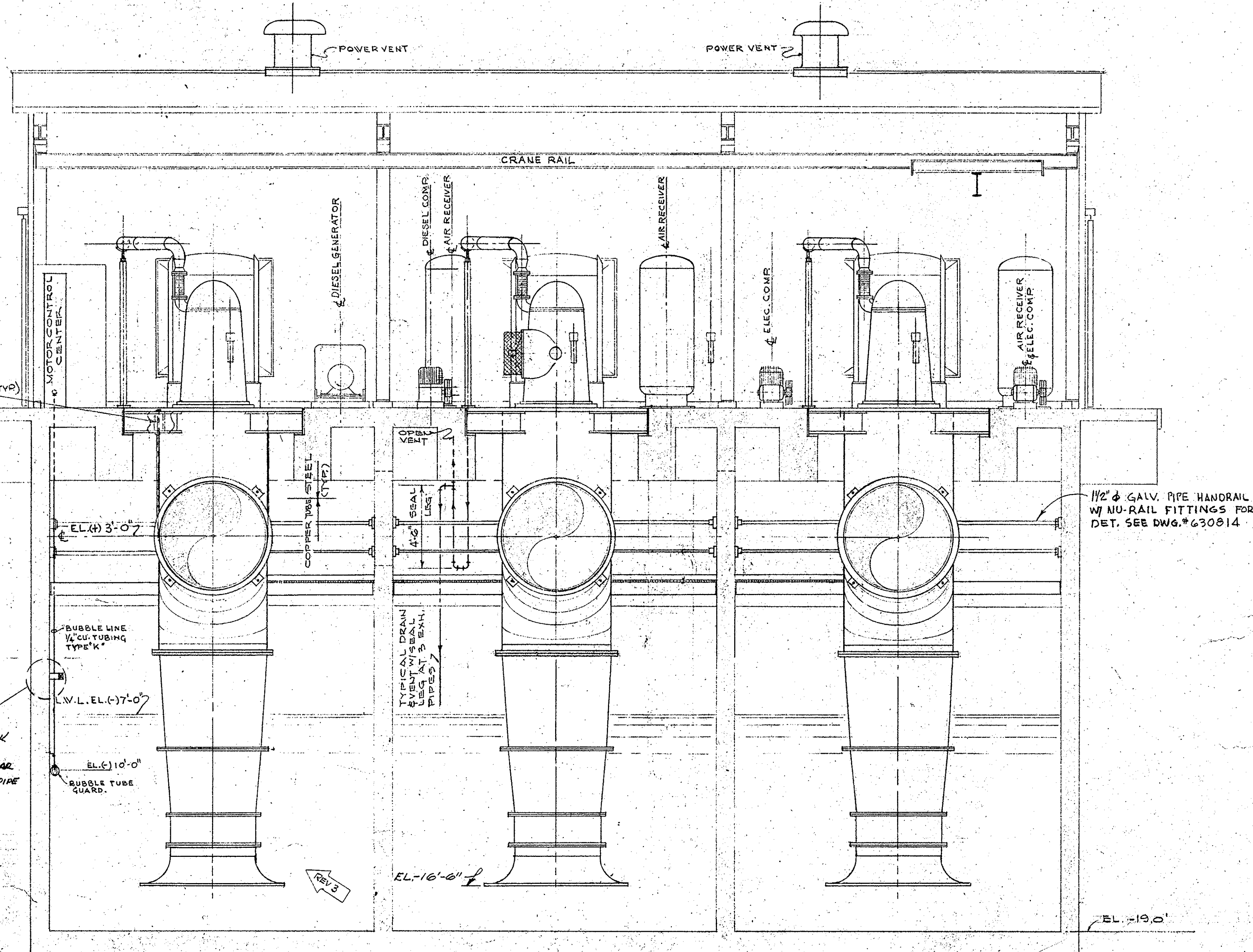
11066 W-29 (16)



SECTION M-1

SCALE 1/4"=1'-0"

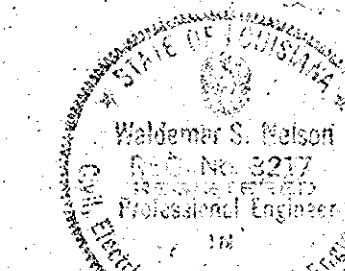
SEE DWG. NO. 630810



SECTION M-2

SCALE 1/4"=1'-0"

SEE DWG. NO. 630810



10-29-65 CONFORMED TO S & W. B. CONSTRUCTION RECORDS - WSN CO		CONT 184-10	
WALDEMAR S. NELSON AND COMPANY INCORPORATED ENGINEERS AND ARCHITECTS 1200 ST. CHARLES AVE. NEW ORLEANS, LA.		SEWERAGE & WATER BOARD OF NEW ORLEANS	
APPROVED BY: <i>Waldemar S. Nelson</i>	DATE: 9-12-63	INTRACOASTAL PUMP STATION MACHINERY SECTIONS	
DRAWN BY: C. G.	DESIGNED BY: C. G.	CHECKED BY: <i>W. S. Nelson</i>	DATE: 9-10-63
SCALE: NOTED	ACCOUNT: 6308	DRAWING NO. 630817	

REV. 5	BY:	DATE:	REV. 4	BY:	DATE:	REV. 3	BY: JWS	DATE: 5-30-64	REV. 2	BY: JWS JR.	DATE: 10-15-63	REV. 1	BY: JWS	DATE: 10-29-63
								REMOVED GEAR OIL COOLER INDICATED ELBOW SUPPORT & BEAM.			ADDED HYD. PUMP			GENL. REV.

11066 W-29

(17)

