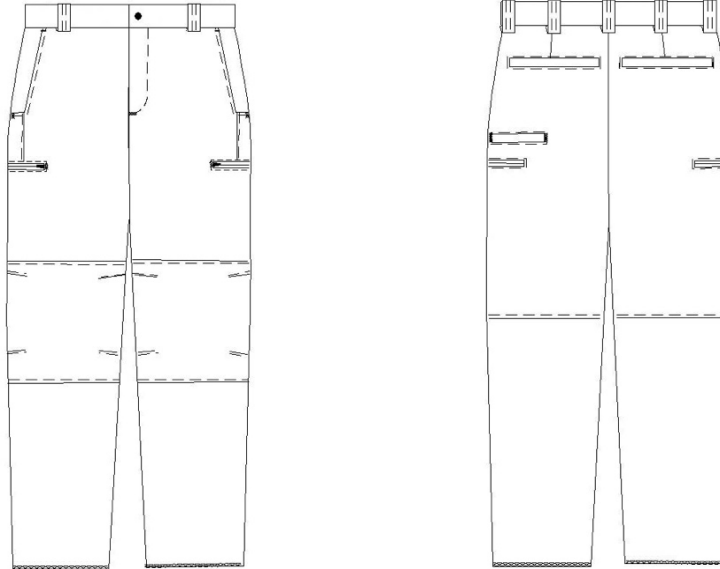


ATTACHMENT C - SPECIFICATIONS
8666 BLAUER FLEX RS COVERT TACTICAL PANT, GRIPFLEX WAISTBAND
COLOR: DARK NAVY

GENERAL: ITEM No. 1 - 5

Specification based on Men's Size 36, Regular length.



FABRIC:

Content – 100% Polyester with weft mechanical stretch rip-stop weave. Must be piece dyed, have soil-release qualities and a durable water repellent (DWR) finish. The fabric shall be machine washable and dry cleanable.

Physical Properties:

- Weight – 225 grams per square meter +/- 5%
- Warp Yarn – 225D SD
- Filling Yarn – 300D SD
- Picks/inch – 103T
- Ends/inch – 57T
- Warp Stretch – 1%
- Fill Stretch – 15%
- Breaking/Tensile Strength – 80 lbs x 50 lbs
- Tear Strength – 4 lbs x 3 lbs
- Pilling resistance (random tumble test for 30 minutes) – 4 grade
- Dry Crocking – 3 grade
- Wet Crocking – 2.5 grade
- Colorfastness to washing and light – 4 grade

POCKETING FABRIC:

Pockets, waistband and fly lining shall be:

- Blend: 65% Polyester, 35% cotton
- Weave: Twill
- Weight: 5.2 oz/yd.
- Color: Dark Grey
- Finish: Pre-cure permanent press

TRIM:

- Interlining: polyester non- woven fusible on belt loops and fly tab
- Interlining: cotton & polyester stretch, knit interfacing for waistband
- Waistband: 2-1/2" wide Blauer branded elastic with two rows of silicone shirt grip
- Binding: pocketing fabric, bias cut
- Fly & Pocket zipper: self-healing nylon coil #4.5 with auto lock slider
- Snap: Prym style brass, non-rusting metal with cap
- Buttons: melamine, 24 ligne; Color: matching shell fabric
- Thread: polyester wrapped on monofilament polyester: Color: matching except use black thread on dark navy goods.

GENERAL DESIGN:

Shall be Blauer Duty Uniform (B.DU) style pant must have seven pockets, an articulated knee, a stretch waistband, a crotch gusset, and a zipper fly with snap.

STRETCH WAISTBAND:

Stretch interfacing waistband shall finish at 2" high and must consist of a left and a right single-ply of each of the shell fabric, stretch interfacing, and Blauer logo jacquard elastic with two rows of silicone grip. The waist band must join at the center back seam with approximately 3/8" seam allowance. There shall be one snap closure with flat back and covered cap placed centered and 3/4" from center front edge to center of the snap.

WAIST CLOSURE:

Waist closure appearance must be guaranteed by mounting a #24 ligne four-hole button on the bottom edge of the under waistband facing, on the wearer's left for the fly tab. (** Women's version shall not have a fly tab.*)

FLY CONSTRUCTION:

The right inside fly shall be reinforced with two plies of shell fabric and one ply of interlining with 1/8" gauge top stitched along the entire exposed edge to ensure shape retention for extended wear life. The left fly, constructed of 2-ply of shell fabric shall be fully lined for shape retention. Right and left fly are to be joined together at the base of the fly with a vertical bar tack and clean finished with binding.

SLIDE FASTENER (FLY ZIPPER):

Delrin coil, self-healing hardware shall be mounted on colorfast blend of nylon and cotton 7/16" tape, Coil size #4.5. Metal zippers which may break will not be accepted.

BELT LOOPS:

There are to be seven belt loops on trouser sizes up to and including waist 45, nine on sizes 46 through 61, and 11 on sizes 62 and up. Each loop shall be 1" wide and shall have an opening of 2-1/4". The loops shall be interlined with fusible and must have a double needle top-stitch down the center. Belt loops are to be inserted into the waistband and placement should be specifically located to afford the cleanest of appearances along with proper functionality of the tunnel waistband. (** Quantity of belt loops may change per women sizing.*)

POCKETS:

There shall be seven pockets assembled as follows:

- I. **Front:** L-shaped pocket shall measure 1-5/8" from the top waistband to 1-1/4" at the bottom at the side seam. Pocket bags shall be constructed of one piece of the specified pocketing material and shall finish approximately 7-1/4" wide at the bottom of the pocket opening and 12-1/2" long from where the pocket is sewn into the waistband. Pockets shall be over-edge stitched, turned and top-stitched for security and clean-finishing. A facing on the palm side of the pocket, made of shell fabric, must measure 4-1/4" wide from the side seam along the waistband and shall taper to the bottom of the pocket opening. Another shell fabric facing shall be placed on the inside of the pocket, away from the body, measuring 2-1/4" wide at the waistband seam. There shall be a horizontal bar tack across the

top of the pocket opening, on outer layer of the waistband, and a vertical bar tack at the bottom of the pocket opening centered on the side seam for reinforcement. An additional 1-ply of shell fabric shall be applied with a single needle topstitch at the bottom end of the pocket opening as reinforcement for knife position.

- II. **Rear:** Hip pockets must have a 1/2" wide lapped welt with edge stitching and a vertical straight bar tacks set at each end of the pocket opening. The finished pocket opening shall measure 5-1/2" and the finished pocket depth shall be 6" and 6-3/4" wide.
- III. **Side:** Side cut-in pocket construction shall consist of a horizontal zipper closure with double 1/4" wide welts, and shall be centered over the side seams. The pocket bag shall be constructed of pocketing fabric and should have a depth of 9" and a width of 8". The horizontal zipper shall be 7-1/2" long, close from front to back and shall have a vertical bar tack placed at each opening end.

Inside wearers' left side cut-in pocket shall have an interior magazine pocket cut out of 1-ply shell with top opening measuring 6" relax, extending to 6-1/2" wide, by 4" high, and tapering to 4-1/2" wide at the bottom. This pocket shall have an elasticized top hem with a single needle, vertical stitching through the center dividing the pocket into two. There are to be vertical bar tacks placed at each top side edge and at the top of center divider for reinforcement.

Inside wearers' right side cargo patch pocket shall have an interior phone pocket cut out of 1-ply shell with double bend-back top edge measuring 4" wide by 6" high. There are to be vertical bar tacks placed at each top side edge for reinforcement.

- IV. **Rear:** One rear phone pocket shall be on the wearer's left, placed below the waistband seam and 1" above the top edge of the side cut-in pocket. The 1/2" tall single welt pocket opening shall measure 4-1/4" wide with vertical bar tacks at each end of opening. The pocket bag shall be constructed out of pocketing material and shall measure 5-3/4" wide by 6-1/2" deep. Shall have a clean finish edge with topstitching along all sides of the pocket opening.

DARTS:

There shall be two darts to shape the trouser at the waist. They shall be placed at the left and right back extending down from the waistband to the center of each hip pocket.

CROTCH AND SEAT ASSEMBLY:

The crotch shall be formed below the fly at the intersection of the four body panels and the 4" wide, diamond- shaped gusset. To ensure absolute seat seam integrity, the seat seam, which joins the left and right sides of the trousers, is to be double sewn by means of two needles each; sewing stitch type 401, chain stitch. The two needles sew in tandem shall form closely adjacent alternating stitches totaling not less than 16 per inch.

LEG CONSTRUCTION:

The front legs consist shall of three pieces and the back legs shall consist of two and shall be fully cut for ease of movement and assembled using over-edge stitching. The side seam shall include double needle topstitching. Knee articulation construction must consist of two-darts at front, two-darts at side seam, and one horizontal seam at back; all with single-needle topstitching for reinforcement.

STITCHING:

All stitching must conform to the Federal Standard specifications (ATSM-D-6193). All stitch types are to be sewn at stitch per inch (S.P.I.) rates individually set by operation at no less than 10 S.P.I. and no more than 12 S.P.I. to ensure extended sewn wear life. Stitch type 401 Tandem shall be used at a combined S.P.I. of 16. All thread tension is to be evenly maintained to eliminate tight or loose stitching. All seam allowances are to be maintained so that there are no raw edges, run offs, twist, pleats, puckers or open seams.

FINISHING:

Trousers shall be fully shaped on high temperature, high-pressure presses to eliminate wrinkles and form creases. Trousers must meet the standard of the American Association of Textile Chemists and Colorists (AATCC) as follows:

- I. AATCC Test Method 124- 2018 "Appearance of Durable Press Fabric After Repeated Home Launderings".
- II. AATCC Test Method 88B- 2018 "Appearance of Seams in Wash and Wear Items After Home Launderings".
- III. AATCC Test method 88C- 2018 "Appearance of Crease in Wash and Wear Items After Home Launderings".

WORKMANSHIP:

All trousers shall be made in an ISO 9000 certified plant and are to be inspected during manufacturing, at final trimming and packing to ensure consistent quality and adherence to this specification.

WARRANTY:

All trousers shall be warranted against defects in materials and workmanship for 1 year.

LABELING:

All trousers shall bear all labels mandated by the Federal Trade Commission (FTC) at the date of manufacture.

SIZING:

Trousers shall be fully graded so that all vital dimensions change according to waist size. The grade shall apply not only to seat, front rise, back rise, and thigh measurements, but also to the knee and bottom measurements.

STANDARD SIZE RANGE:

Men's: Regular Length: even waist sizes 28 - 56; odd sizes 29 – 45

Woman's: Even sizes 2-28, Short & Regular Length

MEASUREMENTS:

Men's: Waist Size 36, Regular Length:

1/2 Waist:	18.5	(plus or minus 0.25")
1/2 Seat:	23.5	(plus or minus 0.25")
1/2 Knee:	10	(plus or minus 0.25")
1/2 Bottom Leg:	8.25	(plus or minus 0.25")
Inseam:	37	(plus or minus 0.50")
Front Rise:	9.5	(plus or minus 0.25")
Back Rise:	11.75	(plus or minus 0.25")
Gusset:	4	(plus or minus 0.125")

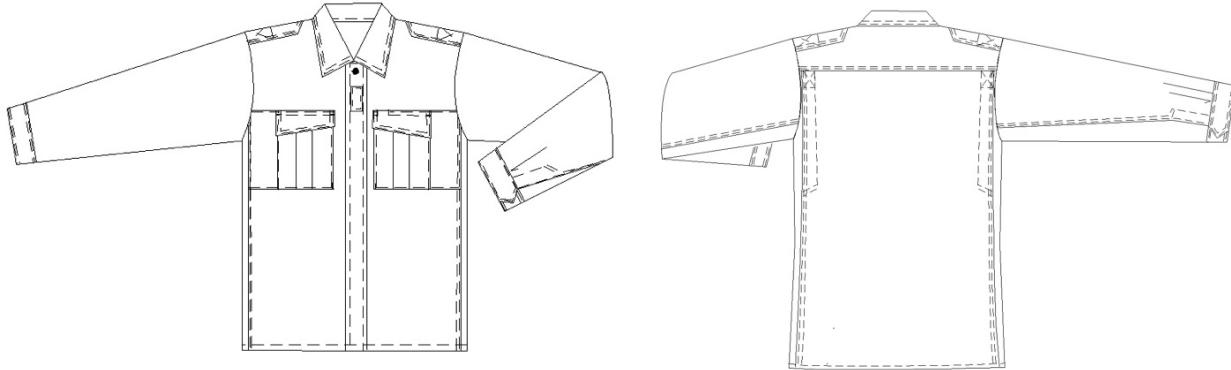
Woman's: Size 10, Regular Length:

1/2 Waist:	16.5	(plus or minus 0.25")
1/2 Seat:	22	(plus or minus 0.25")
1/2 Knee:	9.75	(plus or minus 0.25")
1/2 Bottom Leg:	8.75	(plus or minus 0.25")
Inseam:	35	(plus or minus 0.50")
Front Rise:	8	(plus or minus 0.25")
Back Rise:	10.25	(plus or minus 0.25")
Gusset:	3.25	(plus or minus 0.125")

ATTACHMENT C - SPECIFICATIONS
8632 BLAUER FLEX RS B.DU LONG SLEEVE SHIRT
COLOR: DARK NAVY

GENERAL: ITEM No. 6 - 15

Specification based on Men Size Medium, Regular length.



FABRIC:

SHELL: Content- 100% Polyester. Rip-stop weave with weft mechanical stretch. Shall be piece dyed with soil-release qualities and Teflon, durable water repellent finish. The fabric shall be machine washable and dry cleanable.

Physical Properties:

- Weight – 150 grams per square meter +/- 5%
- Warp Yarn – 150D SD
- Filling Yarn – 150D SD
- Picks/inch – 111T
- Ends/inch – 77T
- Warp Stretch – 1%
- Fill Stretch- 15%
- Breaking/Tensile Strength- 80 lbs x 50 lbs
- Tear Strength- 4 lbs x 3 lbs
- Pilling resistance (random tumble test for 30 minutes)- 4 grade
- Dry Crocking- 3 grade
- Wet Crocking – 2.5 grade
- Colorfastness to washing and light- 4 grade

SIDE PANEL KNIT: Content – 92% Nylon /8% Lycra mesh technical knit with high abrasion, pill resistance and anti-odor finish. Breathable, 4 way stretch.

Physical Properties:

- Weight – 6 oz. per square yard
- Pilling Resistance (Face) – 5
- Stretch (elongation) – 105 x 170
- Bursting Strength, min (psi) – 100

Colorfastness:

- Laundering shade change, min – 4
- Wash-fastness – 4
- Dry/Wet Crocking - 4

TRIM:

- Interlining: 100% cotton, 165 grams/sq meter.
- Hook and loop: 5/8" and 1" wide
- Buttons: melamine, 20 ligne, 4-hole, matching shell fabric
- Zipper: #3 Nylon, separating
- Collar Stays; 2-1/2" x 3/8"
- Snaps: 12.5 mm metal, "S" spring
- Mesh lining

TOP FUSING:

The following parts shall be top fused prior to sewing with woven interlining: Placket, collar, pocket flaps, cuffs, and epaulets.

GENERAL DESIGN:

Shall be a B.DU style long sleeve shirt with a convertible collar, zippered front, and stretch mesh panels.

CONVERTIBLE COLLAR:

Must include a convertible 'sport' collar of medium spread, with collar points measuring 2-3/4" in length and collar height of 3-1/4" at center back. The collar shall consist of 2-ply shell and 1-ply interlining on the top collar only. Permanent stays 2" in length and 3/8" wide, shall be sewn inside the collars so that no stitches are made through the bottom leaf, and placed along front edge. The collar shall be 1/4" double needle topstitched all around.

SLEEVES:

Sleeves shall be straight, two piece set-in sleeves with a stretch mesh underarm panel with a 1/4" double needle topstitch on shell fabric. The cuffs are to be 2-1/2" in width and shall have a tab adjustment. The tab shall be pointed, with hook and loop closure. The cuff shall be 1/4" double needled topstitched at the bottom, and 1/16" from the edge of the top. There shall be a sleeve vent opening from the top of the cuff, measuring 4-3/4" long. The vent placket shall be 3/4" wide finished with 1/16" single needle topstitch. The sleeve seam, as well as the sleeve setting seam (i.e. securing it to be body of the shirt) must be made by a narrow safety stitch, so as to properly strengthen the seam, as well as prevent the fabric from raveling. Cuffs are to be top fused and fully lined to give body by sewing in a self-fabric inner lining, cut straight to retain its shape.

FRONT:

The left front shall have a top center placket 1-1/2" wide with two double rows of stitching 7/8" apart. The front shoulders shall be joined so that both raw edges of the back yoke are turned under, with the front sandwiched between. All three shall be stitched down with a 1/4" double needle stitch. Shoulder joining shall utilize the quality folder joining method; a safety stitch joining is unacceptable. The front placket at top center shall be interlined with stabilized fusible interlining. The front placket shall have a 14" nylon zipper with a compatible colored tape sewn to the front of the shirt and a hidden snap at the top and bottom of the zipper. The hem shall be clean finished using double bend back folder with 1/4" top stitching.

MESH SIDE PANELS:

There shall be two mesh side panels sewn to the front and back panels to allow ventilation and bi-swing action. The top of the side panel shall meet the top of the mesh sleeve panel on the fronts. The top of the side panel must extend to below the back yoke on the back side and shall act as a bi-swing. There shall be 1" wire openings, clean finished, between the front panels placed directly below the bottom of the notebook pockets. Panels shall be finished with 1/4" double needle topstitching.

POCKETS:

- Two B.DU style patch pockets are to be on the chest with 1-1/4" box pleat, stitched top and bottom to prevent spreading. Pockets are to be topstitched 1/16" from the edge, with square corners, to finish 6-1/2" tall by 5-3/4" wide. The left chest pocket shall have an internal pencil compartment 1-1/2" wide corresponding to the opening on flap.
- Hidden napoleon or notebook pockets on the left and right sides are to be under the chest patch pockets and shall close with hook and loop, measuring 5/8" wide by 2" long. Notebook pocket opening shall measure 6-1/4", and shall be secured with 1 vertical bar-tack at the bottom of the opening on both sides.

POCKET FLAPS:

Style must have two asymmetrical flaps, with 1/4" double needle topstitching, to finish 5-3/4" in width, by 2-3/4" long at outer sides, and 2-1/4" at front side. Flaps are to be secured to the front of the shirt with two rows of stitching 3/16" apart. The left flap must have a 1-1/4" pencil opening corresponding to the pencil compartment inside the pocket. The flaps shall have woven interlining of stabilized fusible. The creased and edge stitched pocket flap construction is unacceptable. The side points of the flaps are to be secured to the pocket by means of hook and loop fasteners sewn onto the flaps and pockets, the hook portion being stitched to the pocket and loop portion sewn to the underside of the flap. The loop piece sewn to the flap shall not be sewn through and through the flap, but must be attached during the manufacturing process before the flap is assembled to prevent the stitching from showing.

BACK:

There shall be a bi-wing pleat stitched to back side of the mesh side panel. Pleat shall be constructed with a 1-1/4" fold-over, reinforced with a 1-1/4" box-stitch and a "X" stitch directly below the back yoke. The bi-wing shall measure approximately 1-1/4" wide by 9" long. The back panel side seams shall be finished with 1/4" double needle topstitch towards the center back.

BACK YOKE:

One-piece back yoke shall be fully lined with mesh fabric and finished with 1/4" double needle topstitching. The yoke is to measure approximately 3-3/8" high at the center back.

EPAULETS:

The epaulets shall be made of 1-ply shell fabric folded, and 1-ply fuse and tac interlining, measuring 1-3/4" wide at the shoulders and 1-1/2" wide at the point. Both sides of the point shall be tacked down to prevent curling, while the other end shall be sewn into the armhole seam during sleeve setting. The length is to be graded conforming to the size of the shirt, while maintaining point placement at 1" from the neckline seam. The epaulets shall be tacked at shoulder with a 1-3/4" box-stitch and "X" stitch from the sleeve head seam through all layers; the remaining opening shall be big enough to allow a standard external microphone to pass through.

MIC TAB:

There shall be a mic tab on the front placket measuring 7/8" wide and 2" long. The mic tab shall be interlined and placed centered on front placket, 4" below the neckline.

NAME TAPE/ STRIP:

There shall be a name tape/strip made of 2-ply shell and 1-ply interlining, measuring 1" wide and 7" long, that shall be placed in a small poly-bag attached to the hangtag.

THREAD:

All thread shall be polyester wrapped on monofilament polyester. Thread color to match the garment.

STITCHING:

All stitching must conform to the Federal Standard 751 specifications (FED-STD-751). All stitch types shall be sewn at the stitch per inch (S.P.I.) rates individually set by operation at no less than 10 S.P.I. and no more than 12 S.P.I. to ensure extended sewn wear life. All thread tension shall be evenly maintained to eliminate right or loose stitching. All seam allowances are to be maintained so that there are no raw edges, run offs, twist, pleats, puckers or open seams.

CUSTOMIZATION:

Depending on the Division, Agency customization will be either gold or silver with the following: add customer supplied shoulder patches; hook and loop Velcro name tabs right chest; and left chest embroidery. Remove mic tab and add Velcro 1.25" x 1.25".

SIZES:

Permanent size marking giving size is to be located inside of collar.

CARE LABEL:

Care instructions are to be on the hem of the shirt in the front.

PRESSING & FINISHING:

Shirt shall be carefully pressed by hand. All loose threads shall be trimmed.

STANDARD SIZE RANGE:

Men's: XS – 5XL; Short, Regular, Tall and X-Tall Lengths

Women's: XS – 2XL; Regular Length

MEASUREMENTS:

Men's: Size M, Regular

Neck Width:	6.5	(plus or minus 0.25 inches)
Chest:	46	(plus or minus 0.75 inches)
Back Length:	32	(plus or minus 0.5 inches)
Sleeve Length (from CB neck):	35	(plus or minus 0.5 inches)

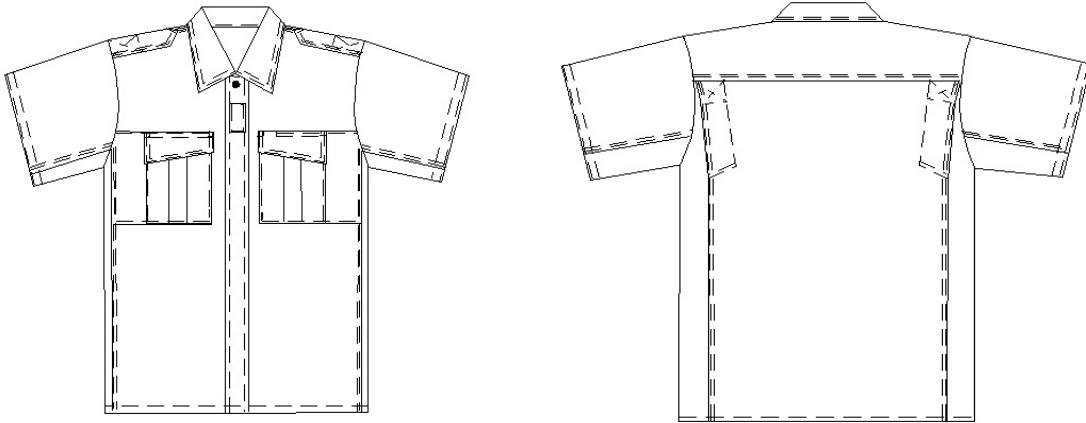
Women's: Size M, Regular

Neck Width:	6	(plus or minus 0.125)
Chest:	41	(plus or minus 0.75 inches)
Back Length:	28	(plus or minus 0.5 inches)
Sleeve Length (from CB neck):	32	(plus or minus 0.5 inches)

ATTACHMENT C - SPECIFICATIONS
8642 BLAUER FLEX RS B.DU SHORT SLEEVE SHIRT
COLOR: DARK NAVY

GENERAL: ITEM No. 16 - 25

Specification based on Men Size Medium, Regular length.



FABRIC:

SHELL: Content- 100% Polyester. Rip-stop weave with weft mechanical stretch. Shall be piece dyed with soil-release qualities and Teflon, durable water repellant finish. The fabric shall be machine washable and dry cleanable.

Physical Properties:

- Weight – 150 grams per square meter +/- 5%
- Warp Yarn – 150D SD
- Filling Yarn – 150D SD
- Picks/inch – 111T
- Ends/inch – 77T
- Warp Stretch – 1%
- Fill Stretch- 15%
- Breaking/Tensile Strength- 80 lbs x 50 lbs
- Tear Strength- 4 lbs x 3 lbs
- Pilling resistance (random tumble test for 30 minutes)- 4 grade
- Dry Crocking- 3 grade
- Wet Crocking – 2.5 grade
- Colorfastness to washing and light- 4 grade

SIDE PANEL KNIT: Content – 92% Nylon /8% Lycra mesh technical knit with high abrasion, pill resistance and anti-odor finish. Breathable, 4 way stretch.

Physical Properties:

- Weight – 6 oz. per square yard
- Pilling Resistance (Face) – 5
- Stretch (elongation) – 105 x 170
- Bursting Strength, min (psi) – 100

Colorfastness:

- Laundering shade change, min – 4
- Wash-fastness – 4
- Dry/Wet Crocking – 4

TRIM:

- Interlining: 100% cotton, 165 grams/sq meter.
- Hook and loop: 5/8" and 1" wide
- Buttons: melamine, 20 ligne, 4-hole, matching shell fabric
- Zipper: #3 Nylon, separating
- Collar Stays; 2-1/2" x 3/8"
- Snaps: 12.5 mm metal, "S" spring
- Mesh lining

TOP FUSING:

The following parts shall be top fused prior to sewing with woven interlining: Placket, collar, pocket flaps, and epaulets.

GENERAL DESIGN:

Shall be a B.DU style short sleeve shirt with a convertible collar, a zippered front, and stretch mesh panels.

CONVERTIBLE COLLAR:

Shall include a convertible 'sport' collar of medium spread, with collar points measuring 2-3/4" in length and collar height of 3-1/4" at the center back. The collar shall consist of 2-ply shell and 1-ply interlining on the top collar only. Permanent stays 2" in length and 3/8" wide, shall be sewn inside of the collars so that no stitches are made through the bottom leaf, and placed along the front edge. The collar shall be 1/4" double needle topstitched all around.

SLEEVES:

The sleeves shall be straight, set-in sleeves, two-piece style made of shell & knit, with knit underarm panel, and 1/4" double needle topstitching on the shell fabric. The sleeve hem should be clean finished with a 1" hem and 1/16" edge stitch. The sleeve seam, as well as the sleeve setting seam (i.e. securing it to the body of the shirt) must be made by a narrow safety stitch, so as to properly strengthen the seam, as well as prevent the fabric from raveling.

FRONT:

The left front shall have a 1-1/2" wide top center placket with two double rows of stitching 7/8" apart. The front shoulders shall be joined so that both raw edges of the back yoke are turned under, with the front sandwiched between. All three shall be stitched down with a 1/4" double needle stitch. Shoulder joining shall utilize quality folder joining method; a safety stitch joining is unacceptable. The front placket at the top center shall be interlined with stabilized fusible interlining. The front placket shall have a 14" nylon zipper with a compatible colored tape sewn to the front of the shirt and a hidden snap at the top and bottom of the zipper. The hem shall be clean finished using double bend back folder with 1/4" top stitching.

MESH SIDE PANELS:

There shall be two mesh side panels sewn to the front and back panels to allow ventilation and for bi-swing action. The top of the side panel shall meet the top of the mesh sleeve panel on the fronts. The top of the side panel shall extend to below the back yoke on the back side and shall act as a bi-swing. There shall be 1" wire openings, clean finished, between the front panels placed directly below the bottom of the notebook pockets. The panels shall be finished with 1/4" double needle topstitching.

POCKETS:

- Two B.DU style patch pockets are to be on the chest with 1-1/4" box pleat, stitched top and bottom to prevent spreading. Pockets are to be topstitched 1/16" from the edge, with square corners, to finish 6-1/2" tall by 5-3/4" wide. The left chest pocket shall have an internal pencil compartment 1-1/2" wide corresponding to opening on flap.

- Hidden napoleon or notebook pockets on the left and right sides are under the chest patch pockets and close with hook and loop, measuring 5/8" wide by 2" long. Notebook pocket opening measures 6-1/4", shall be secured with 1 vertical bar-tack at the bottom of the opening on both sides.

POCKET FLAPS:

Style shall have two asymmetrical flaps, with 1/4" double needle topstitching, to finish 5-3/4" in width, by 2-3/4" long at outer sides, and 2-1/4" at front side. The flaps shall be secured to the front of the shirt with two rows of stitching 3/16" apart. The left flap shall have a 1-1/4" pencil opening corresponding to the pencil compartment inside the pocket. The flaps shall have woven interlining of stabilized fusible. Creased and edge stitched pocket flap construction is unacceptable. The side points of the flaps are to be secured to the pocket by means of hook and loop fasteners sewn onto the flaps and pockets, the hook portion shall be stitched to the pocket and loop portion shall be sewn to the underside of the flap. The loop piece sewn to the flap shall not be sewn through and through the flap, but must be attached during the manufacturing process before the flap is assembled to prevent the stitching from showing.

BACK:

There shall be a bi-wing pleat stitched to back side of the mesh side panel. The pleat is constructed with a 1-1/4" fold-over, reinforced with a 1-1/4" box-stitch and "X" stitch directly below back yoke. The bi-wing shall measure approximately 1-1/4" wide by 9" long. The back panel side seams shall be finished with 1/4" double needle topstitch towards the center back.

BACK YOKE:

The one-piece back yoke shall be fully lined with mesh fabric and shall be finished with 1/4" double needle topstitching. The yoke is to measure approximately 3-3/8" high at the center back.

EPAULETS:

The epaulets shall be made of 1-ply shell fabric folded, and 1-ply fuse and tac interlining, measuring 1-3/4" wide at shoulders and 1-1/2" wide at the point. Both sides of the point shall be tacked down to prevent curling while the other end shall be sewn into the armhole seam during sleeve setting. The length is to be graded conforming to the size of the shirt, while maintaining point placement at 1" from the neckline seam. The epaulets shall be tacked at shoulder with a 1-3/4" box-stitch and "X" stitch from the sleeve head seam through all layers; the remaining opening shall be big enough to allow a standard external microphone to pass through.

MIC TAB:

There shall be a mic tab on the front placket measuring 7/8" wide and 2" long. The mic tab shall be interlined and placed centered on the front placket, 4" below neckline.

NAME TAPE/ STRIP:

There shall be a name tape/strip made of 2-ply shell and 1-ply interlining, measuring 1" wide and 7" long, that shall be placed in a small poly-bag attached to the hangtag.

THREAD:

All thread shall be polyester wrapped on monofilament polyester. Thread color to match the garment.

STITCHING:

All stitching must conform to the Federal Standard 751 specifications (FED-STD-751). All stitch types shall be sewn at the stitch per inch (S.P.I.) rates individually set by operation at no less than 10 S.P.I. and no more than 12 S.P.I. to ensure extended sewn wear life. All thread tension shall be evenly maintained to eliminate right or loose stitching. All seam allowances are to be maintained so that there are no raw edges, run offs, twist, pleats, puckers or open seams.

CUSTOMIZATION:

Depending on the Division, Agency customization will be either gold or silver with the following: add customer supplied shoulder patches; hook and loop Velcro name tabs right chest; and left chest embroidery. Remove mic tab and add Velcro 1.25" x 1.25".

SIZES:

A permanent size marking shall be located inside of the collar.

CARE LABEL:

Care instructions are to be included on the hem of the shirt in the front.

PRESSING & FINISHING:

The shirt shall be carefully pressed by hand. All loose threads shall be trimmed.

STANDARD SIZE RANGE:

Men's: XS – 5XL; Regular and Tall Lengths

Women's: XS – 2XL; Regular Length

MEASUREMENTS:

Men's: Size M, Regular

Neck Width:	6.5	(plus or minus 0.25 inches)
Chest:	46	(plus or minus 0.75 inches)
Back Length:	32	(plus or minus 0.5 inches)
Sleeve Length (from CB neck):	20	(plus or minus 0.5 inches)

Women's: Size M, Regular

Neck Width:	6	(plus or minus 0.125 inches)
Chest:	41	(plus or minus 0.75 inches)
Back Length:	28	(plus or minus 0.5 inches)
Sleeve Length (from CB neck):	18.5	(plus or minus 0.5 inches)