

**CITY OF BATON ROUGE
PARISH OF EAST BATON ROUGE**

June 19, 2025

ADDENDUM NO. 4

TO: ALL BIDDERS

**SUBJECT: GROOM ROAD (McHugh Road – Plank Road) PROJECT
CITY-PARISH PROJECT NO. 19-EN-HC-0035**

NEW REVISED BID DATE: Tuesday, July 1, 2025 at 2:00 P.M.

REVISED BID DATE: Thursday, June 19, 2025 at 2:00 P.M.

ORIGINAL BID DATE: Thursday, May 29, 2025 at 2:00 P.M.

THE CURRENT BID DATE IS NOT REVISED BY THIS ADDENDUM

The following revisions shall be incorporated in and take precedence over any conflicting part of the original contract documents.

REQUESTS FOR INFORMATION AND RESPONSES

As of June 16, 2025 the following requests for information were received and are answered, as follows:

1. **I received a call from an asphalt subcontractor this afternoon questioning where item 9900031 Binder Course was to be used on the project. There is a note in the plans that calls for a leveling course, but the note states a Level 2f is to be used, not the Binder. Please advise?**

- **DRAWINGS:**

Please delete sheets 2, 2b, 2c, and replace with Revised (Revision #1) Sheets 2, 2b, 2c.

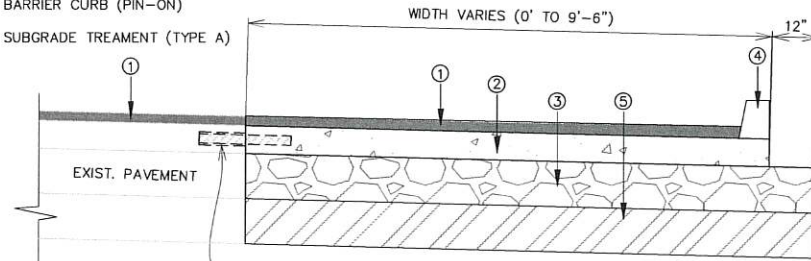
- **ALSO NOTE: CONSTRUCTION BID FORM:**

For paper, sealed and electronic bidders, with reference to page UCBF 1 of 4 of Part 1, Uniform Construction Bid Forms, the Bidder shall indicate receipt of this Addendum in the space provided. Failure to indicate receipt of this addendum shall be cause for the bid to be rejected.

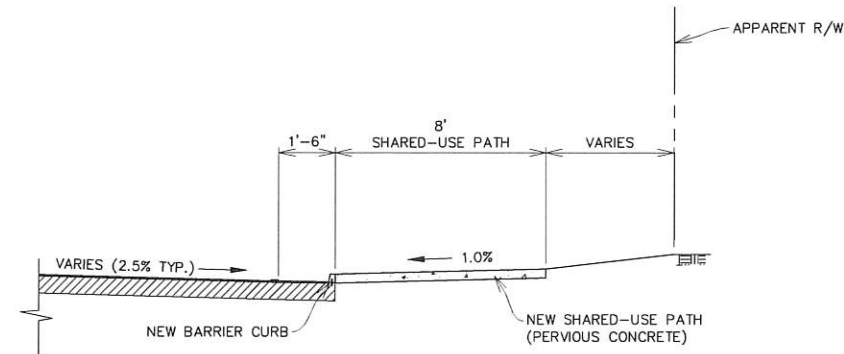

George Chike, P.E.
Project Manager

LEGEND:

- ① 2" ASPHALT OVERLAY (WEARING COURSE LEVEL 2F) ①
- ② 8" PCC PAVEMENT
- ③ 12" CLASS II BASE COURSE (PORTLAND CEMENT CONCRETE)
- ④ 8" REQ'D BARRIER CURB (PIN-ON)
- ⑤ 8" REQ'D SUBGRADE TREATMENT (TYPE A)



TYPICAL FINISHED PAVEMENT SECTION
GROOM ROAD
APPLIES AS FOLLOWS:
STA. 155+28.53 TO STA. 159+80.65

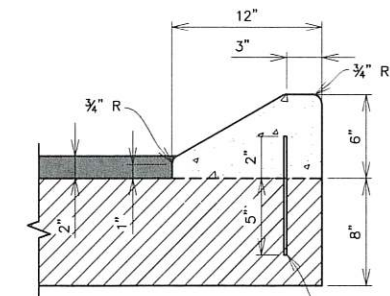


TYPICAL FINISHED SECTION
SHARED-USE PATH AT CURB (N.T.S.)

GROOM ROAD
APPLIES AS FOLLOWS:
STA. 156+21.88 TO STA. 157+20.17 (LT.)
STA. 172+33.47 TO STA. 173+45.48 (LT.)
STA. 176+32.61 TO STA. 176+89.29 (LT.)
STA. 178+54.24 TO STA. 179+39.81 (LT.)
STA. 181+27.28 TO STA. 184+11.77 (LT.)
STA. 190+34.83 TO STA. 208+06.64 (LT.)
STA. 209+67.03 TO STA. 210+74.43 (LT.)
STA. 212+49.73 TO STA. 218+25.71 (LT.)
STA. 155+31.74 TO STA. 159+80.65 (RT.)
STA. 160+64.81 TO STA. 170+01.87 (RT.)
STA. 183+52.55 TO STA. 184+67.19 (RT.)
STA. 195+33.60 TO STA. 198+58.57 (RT.)
STA. 200+88.70 TO STA. 202+78.70 (RT.)
STA. 218+45.91 TO STA. 222+44.76 (RT.)
STA. 222+93.00 TO STA. 229+17.20 (RT.)

MOUNTABLE CURB LOCATIONS

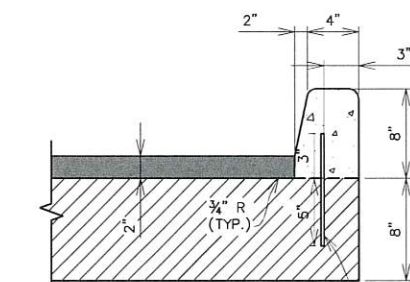
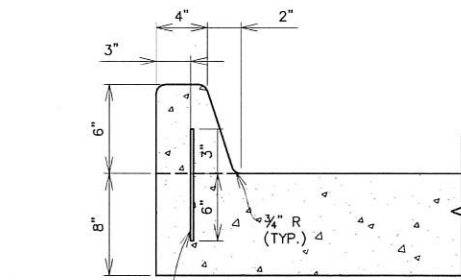
GROOM ROAD
APPLIES AS FOLLOWS:
STA. 152+20.00 TO STA. 156+21.88 (LT.)
STA. 157+20.17 TO STA. 172+33.47 (LT.)
STA. 173+45.48 TO STA. 176+32.61 (LT.)
STA. 176+89.29 TO STA. 178+54.24 (LT.)
STA. 179+39.81 TO STA. 181+27.28 (LT.)
STA. 184+11.77 TO STA. 190+34.83 (LT.)
STA. 208+06.64 TO STA. 209+67.03 (LT.)
STA. 210+74.43 TO STA. 212+49.73 (LT.)
STA. 218+25.71 TO STA. 235+42.37 (LT.)
STA. 152+20.00 TO STA. 155+31.74 (RT.)
STA. 159+80.65 TO STA. 160+64.81 (RT.)
STA. 170+01.87 TO STA. 183+52.55 (RT.)
STA. 184+67.19 TO STA. 195+33.60 (RT.)
STA. 198+58.57 TO STA. 200+88.70 (RT.)
STA. 202+78.70 TO STA. 218+45.91 (RT.)
STA. 222+44.76 TO STA. 222+93.00 (RT.)
STA. 229+17.20 TO STA. 235+89.67 (RT.)



INTEGRAL CONCRETE CURB (MOUNTABLE)
GROOM ROAD

#4 BARS 24" O.C.
(REFER TO STD PLAN 502-01
FOR STEEL BAR DETAIL)

INTEGRAL CONCRETE CURB (6" BARRIER)
McHUGH ROAD

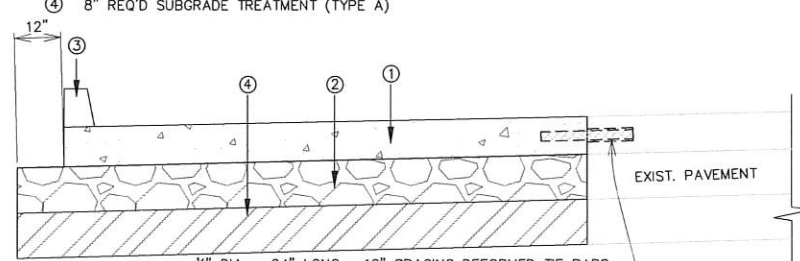


INTEGRAL CONCRETE CURB (8" BARRIER)
GROOM ROAD

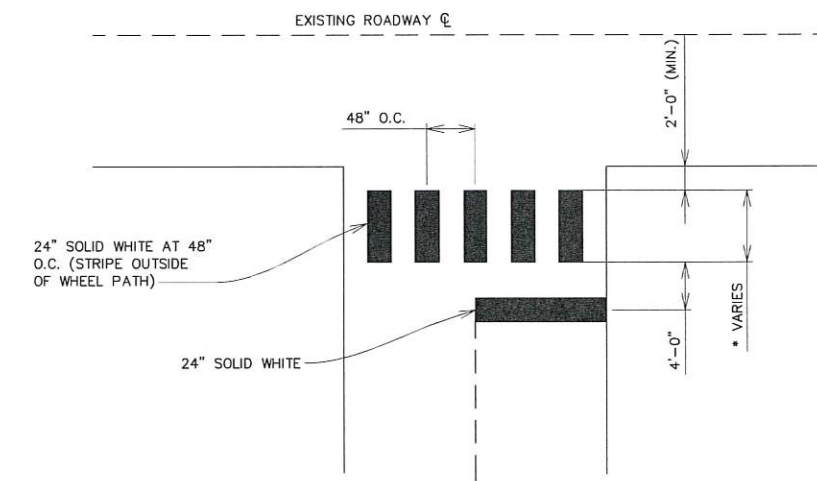
#4 BARS 24" O.C.
(REFER TO STD PLAN 502-01
FOR STEEL BAR DETAIL)

LEGEND:

- ① 8" PCC PAVEMENT
- ② 12" CLASS II BASE COURSE (PORTLAND CEMENT CONCRETE)
- ③ 6" REQ'D BARRIER CURB (PIN-ON)
- ④ 8" REQ'D SUBGRADE TREATMENT (TYPE A)



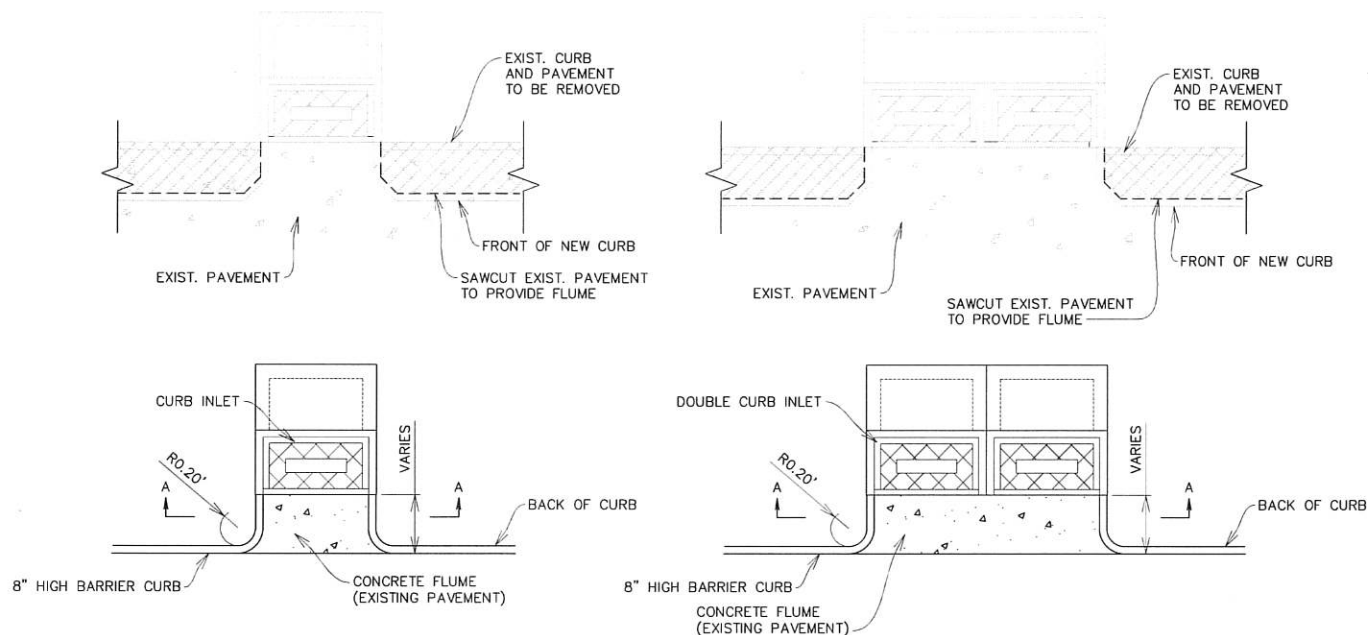
TYPICAL FINISHED PAVEMENT SECTION
McHUGH ROAD
APPLIES AS FOLLOWS:
STA. 10+17.69 TO STA. 12+91.59



CROSSWALK MARKINGS AT UNSIGNALIZED INTERSECTION
GROOM ROAD



SHEET NUMBER	2b
PARISH	EAST BATON ROUGE PARISH
QTY PROJECT	19-EN-HC-0035
STATE PROJECT	
DATE	MAY 2025
SHEET	3 OF 5
DESIGNED	JAC
CHECKED	TAA
DETAILED	GPT
CHECKED	JAC
REVISION	
DATE	06/2025
NO.	0
REVISION DESCRIPTION	
BY	
DETAILS	
GROOM ROAD - LA 19 TO PLANK ROAD	
BR	
PEC	

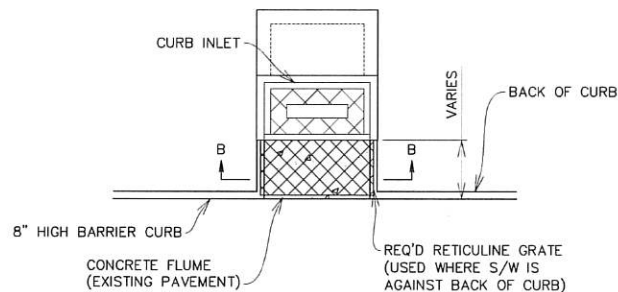


TYPICAL CURB INLET FLUME

APPLIES AS FOLLOWS:
STA. 164+09 LT.
STA. 165+67 LT.
STA. 174+16 RT./LT.
STA. 180+47 RT./LT.
STA. 209+56 RT.
STA. 224+47 LT.
STA. 230+63 RT.

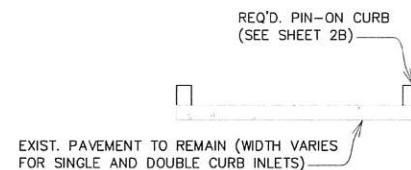
TYPICAL DOUBLE CURB INLET FLUME

APPLIES AS FOLLOWS:
STA. 153+37 LT.
STA. 153+38 RT.
STA. 211+64 LT.
STA. 233+35 RT.
STA. 233+37 LT.

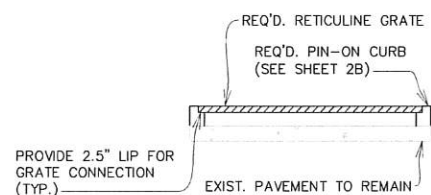


TYPICAL CURB INLET FLUME WITH GRATING

APPLIES AS FOLLOWS:
STA. 164+08 RT.
STA. 165+73 RT.
STA. 195+57 RT./LT.
STA. 223+82 RT.
STA. 225+14 RT.
STA. 226+52 RT.



SECTION A-A

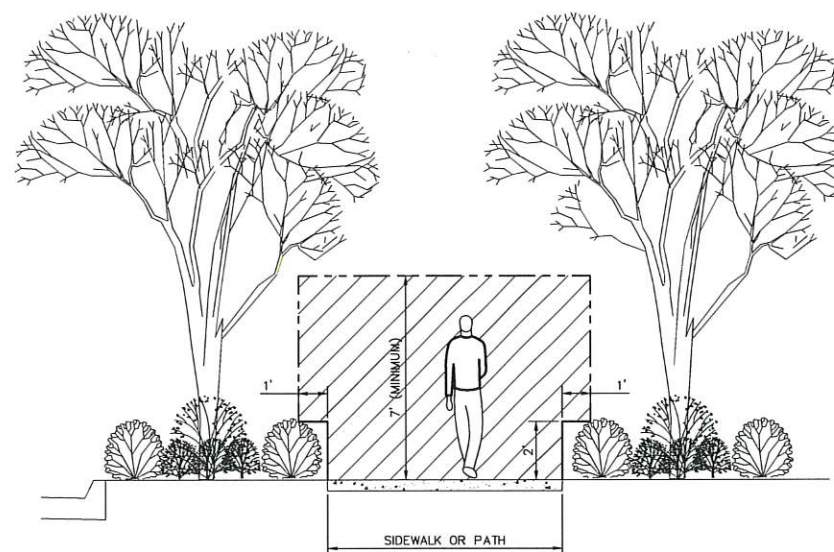


SECTION B-B

CURB FLUME DETAILS N.T.S.

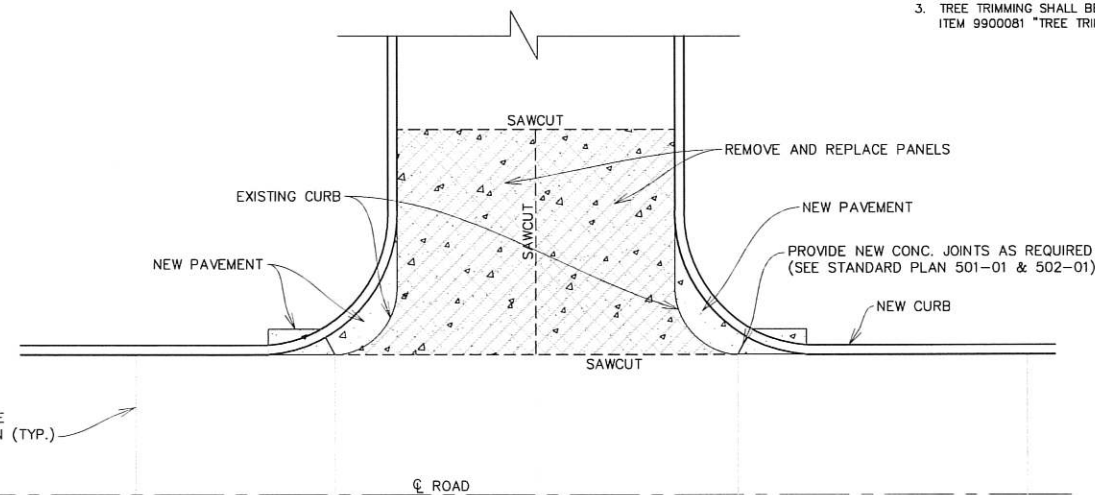
CURB FLUME DETAIL GENERAL NOTES:

- FLUMES SHALL BE PROVIDED ONLY FOR EXISTING INLETS TO REMAIN AND SHALL BE PROVIDED AT THE LOCATIONS IDENTIFIED ON THIS SHEET.
- CONTRACTOR SHALL SAW CUT EXISTING PAVEMENT SUCH THAT A PORTION OF EXISTING PAVEMENT WILL REMAIN TO PROVIDE A FLUME BOTTOM FOR CURB INLETS. CONTRACTOR SHALL FIELD VERIFY REQUIRED DIMENSIONS. CURB SHALL BE PIN-ON AS SHOWN ON SHEET 2b AND SHALL MATCH THE CURB TYPE AT ANY LOCATION.
- FOR LOCATIONS WHERE THE SHARED-USE PATH IS ADJACENT TO THE BACK OF CURB A GRATE SHALL BE PROVIDED OVER THE FLUME. REFER TO STANDARD PLAN 702-99 FOR GRATE TYPE AND CONNECTION REQUIREMENTS. CONTRACTOR TO FIELD VERIFY SIZE REQUIREMENTS.
- FOR FLUME LOCATIONS THAT REQUIRE A GRATE THE CONTRACTOR SHALL PROVIDE LANDINGS WITHIN THE CURB TO ACCOMMODATE GRATE CONNECTION AND TO PROVIDE A SMOOTH TRANSITION BETWEEN THE GRATE AND SHARED-USE PATH. THE GRATE SHALL MATCH THE GRADE AND ELEVATION OF THE SHARED-USED PATH OR ANY OTHER ADJACENT SURFACES.
- CONTRACTOR SHALL VERIFY ALL DIMENSIONS.



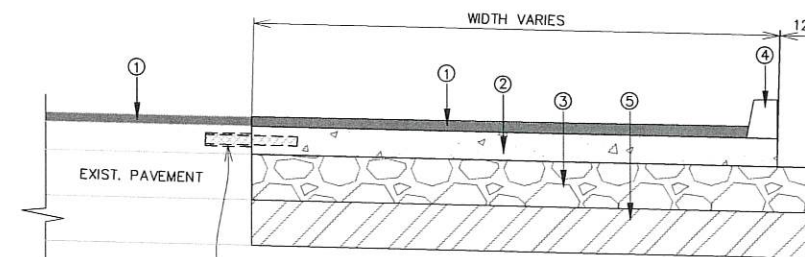
TREE TRIMMING AND PRUNING ON SIDEWALK OR PATH

- NOTE:
- TREE TRIMMING AND PRUNING SHALL INCLUDE REMOVAL OF ALL BRANCHES AND VEGETATION IN THE PATH OF ALL SIDEWALKS WITHIN PROJECT AREA AS REQUIRED TO MAINTAIN MINIMUM 7' OF VERTICAL CLEARANCE AND CLEAR WIDTH AS SHOWN IN DETAIL.
 - CONTRACTOR SHALL TRIM BRANCHES BELOW 23' THAT OBSTRUCT STREET LIGHTING.
 - TREE TRIMMING SHALL BE PAID FOR UNDER PAY ITEM 9900081 "TREE TRIMMING".



TYPICAL PAVEMENT ADDITION AT WIDENED TURNOUTS

NOTE: THE LAYOUT SHOWN IS TYPICAL FOR CONCRETE REMOVAL AND REPLACEMENT FOR WIDENING OF TURNOUTS. EACH LOCATION IN THE PROJECT THAT REQUIRES THIS WORK WILL VARY. CONTRACTOR SHALL COORDINATE WITH THE OWNER AND PROGRAM MANAGER.



1/2" DIA. x 24" LONG x 12" SPACING DEFORMED TIE BARS. THE BARS SHALL BE INSTALLED ON EXISTING PAVEMENT BY DRILLING HOLES 1/8" LARGER THAN THE BAR DIAMETER TO A REQUIRED DEPTH OF 1/2 THE BAR LENGTH. (PAID FOR UNDER ITEM NUMBER 5020108)

TYPICAL FINISHED PAVEMENT SECTION AT WIDENED TURNOUTS GROOM ROAD

LEGEND:

- 2" ASPHALT OVERLAY (WEARING COURSE LEVEL 2F)
- 8" PCC PAVEMENT
- 12" CLASS II BASE COURSE (PORTLAND CEMENT CONCRETE)
- 8" REQ'D BARRIER CURB (PIN-ON)
- 8" REQ'D SUBGRADE TREATMENT (TYPE A)



SHEET NUMBER	2c
EAST BATON ROUGE PARISH	
PARISH	19-EN-HC-0035
QTY PROJECT	
STATE PROJECT	
DESIGNED JAC	
CHECKED TAA	
DATE	MAY 2025
BY	
REVISION	
DESCRIPTION	
DATE	06/2025
NO.	
BR	
CITY OF BATON ROUGE	
PE/C	

DETAILS

GROOM ROAD - LA 19 TO PLANK ROAD