

ENGINEERING ANNEX ROOF REPLACEMENT UNIVERSITY OF NEW ORLEANS

Addendum 02

State of Louisiana Facility Planning Control
State Project No.: 01-107-24-05, F.01004598

UNO Purchasing Bid #: BTB 2858
UNO Project #: SP5286

H/S Project: 24054
Addendum: 02
Date: 4.24.2025

This Addendum forms a part of the Contract Documents and modifies the original specifications and drawings issued for bidding to the extent noted hereinafter. All other provisions of the Bid Documents shall remain unchanged.

Careful note of this Addendum will be taken by all parties of interest so that proper allowances are made in all computations, estimates and contracts and so that all trades affected are fully advised in the performance of the work that will be required of them. Acknowledge receipt of this Addendum on the Bid Form.

Modifications to the Drawings

Sheet A001

- 1.02** Delete Sheet A001 – DEMOLITION PLAN in its entirety. In lieu thereof, substitute revised Sheet A001 – DEMOLITION PLAN, included herein as part of this Addendum.

Sheet A901

- 1.03** Delete Sheet A901 – ROOF PLAN in its entirety. In lieu thereof, substitute revised Sheet A901 – ROOF PLAN, included herein as part of this Addendum.

Sheet A901

- 1.04** Delete Sheet A912 – ROOF DETAILS in its entirety. In lieu thereof, substitute revised Sheet A912 – ROOF DETAILS, included herein as part of this Addendum.

END OF ADDENDUM.

4/23/2025 9:55:34 AM

C:\Revit Models\24054 - UNO Engineering Annex Roof Replacement.rvt

GENERAL NOTES

- EXISTING ROOF:** BUILT UP ROOF WITH BROADCAST AGGREGATE ON TAPERED PERLITE WITH APPROXIMATELY 3" THICK AT EDGE OF ROOF DRAINS AND 9-1/2" THICK AT ROOF PERIMETER. PERLITE APPEARS TO BE SET IN PITCH DIRECTLY ON CAST IN PLACE CONCRETE DECK.
- CLEAN EXISTING CONCRETE DECK SUFFICIENTLY TO PROVIDE A SURFACE SUITABLE FOR ADHESIVE ATTACHMENT OF THE NEW RIGID INSULATION. PROVIDE ONE SQUARE SAMPLE AREA FOR CONFIRMATION WITH ROOFING MEMBRANE MANUFACTURER.
- DIMENSIONS, ROOF THICKNESSES, LOCATIONS, SIZES AND ORIENTATIONS OF ALL ROOF AREAS AND ROOF MOUNTED ITEMS ARE ALL APPROXIMATE. FIELD VERIFY ALL CONDITIONS THROUGHOUT.
- UNLESS NOTED OTHERWISE, DASHED LINES INDICATE WORK TO BE DEMOLISHED AND REMOVED.
- DRAWINGS ARE DIAGRAMMATIC AND DO NOT SHOW EVERY ITEM TO BE DEMOLISHED; WHETHER LISTED OR NOT, REMOVE ALL COMPONENTS NEEDED FOR NEW WORK.
- PROTECT ALL WORK THAT IS SCHEDULED TO REMAIN FROM DAMAGE.
- PRIOR TO EXECUTING WORK, NOTIFY THE ARCHITECT IF CONDITIONS DEVIATE FROM WHAT IS SHOWN.
- DEMOLISH ALL LIGHTNING PROTECTION SYSTEM COMPONENTS THROUGHOUT WITH THE EXCEPTION OF ALUMINUM THREADED GROUND RODS ATTACHED TO ROOF DECK.
- SALVAGE ALL STAINLESS STEEL FLASHING AND COPING FOR DELIVERY TO METAL RECYCLING COMPANY. OWNER WILL COLLECT VALUE OF RECYCLED MATERIAL.
- CONFIRM IF CONDUIT OR PIPE PENETRATIONS ARE STILL IN SERVICE. WHERE NO LONGER IN USE AND/OR CAPPED ABOVE ROOF, REMOVE LINE TO BELOW ROOF DECK AND CAP. WHERE STILL IN USE, REMOVE ALL PITCH POCKETS, MASTIC, LEAD FLASHING AND PREPARE FOR LIQUID FLASHING.
- CUT BACK TREE BRANCHES FROM EXTERIOR FACE OF ROOF PARAPET 24" CLEAR MIN. THERE SHALL BE NO TREE BRANCHES ABOVE THE ROOF OR PARAPET.

KEYNOTE LEGEND

- 0130 DEMOLITION ROOF HATCH ASSEMBLY AND WOOD BLOCKING DOWN TO TOP OF CONCRETE ROOF DECK. SEE DETAIL - 8 / A013
- 0131 DEMOLISH ALL OF ROOF SYSTEM DOWN TO TOP OF CONCRETE ROOF DECK WITHIN THE HATCHED AREA ENCLOSED BY BOLD DASHED LINE. THIS INCLUDES ALL STAINLESS STEEL COUNTER FLASHING AT CAST STONE PANEL REGLETS, FLASHING, SEALANT, AGGREGATE, MEMBRANES, INSULATION, CANTS AND PITCH POCKETS.
- 0132 DEMOLISH ALL STAINLESS STEEL COPING, FASTENERS, CLEATS AND WOOD BLOCKING AT TOP OF PARAPET TYPICAL. SEE DETAIL - 1 / A013
- 0133 DEMOLISH MEMBRANE FLASHING AND CANT STRIP AT BASE OF EXHAUST FAN CURB. EXISTING CURB AND COUNTERFLASHING TO REMAIN. SEE DETAIL - 5 / A013
- 0134 DEMOLISH ROOF DRAIN DOME, COLLAR, BOLTS AND ANY ROOF MEMBRANE OR MASTIC ATTACHED TO THE DRAIN BASIN. EXISTING DRAIN BASIN TO REMAIN. SEE DETAIL - 9 / A013
- 0135 REMOVE BASE FLASHING ON GALVANIZED STEEL SUPPORT POSTS AT CONDUITS RUNS. CONDUIT AND SUPPORT POSTS ARE EXISTING TO REMAIN AND SHALL REMAIN IN OPERATION THROUGHOUT RENOVATION.
- 0136 EXISTING GALVANIZED STEEL LADDER TO REMAIN.
- 0137 DEMOLISH STAINLESS STEEL THROUGH WALL SCUPPER ENCLOSURE, WOOD BLOCKING, CAN STRIP, MEMBRANE FLASHING AND MASTIC. EXISTING CAST STONE PANEL ROUGH OPENING TO REMAIN. SEE DETAIL - 3 / A013
- 0138 DEMOLISH ALL SEALANT AND BACKER ROD FROM VERTICAL JOINTS IN EXTERIOR FACE OF CAST STONE PANELS ALONG THIS WALL, FROM TOP OF CONCRETE DECK TO TOP OF PARAPET ABOVE. PREPARE JOINT FOR NEW SEALANT INSTALLATION.
- 0139 DEMOLISH ALL SEALANT AND BACKER ROD FROM VERTICAL JOINTS IN EXTERIOR FACE OF CAST STONE PANELS ALONG THIS WALL, FROM TOP OF CONCRETE DECK TO HORIZONTAL JOINT APPROXIMATELY 12'-0" ABOVE TOP OF ROOF DECK. PREPARE JOINT FOR NEW SEALANT INSTALLATION.
- 0147 DEMOLISH METAL JACK VENT ASSEMBLY AND WOOD BLOCKING DOWN TO TOP OF CONCRETE ROOF DECK.

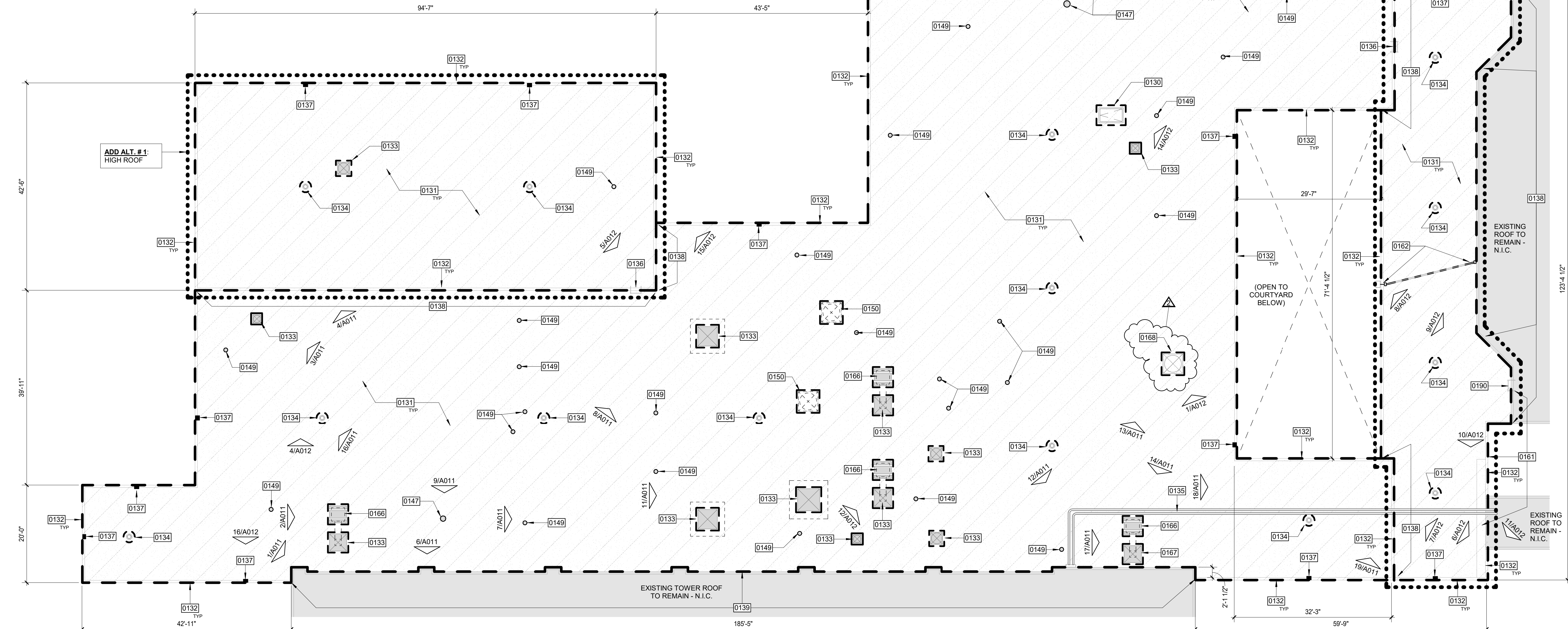
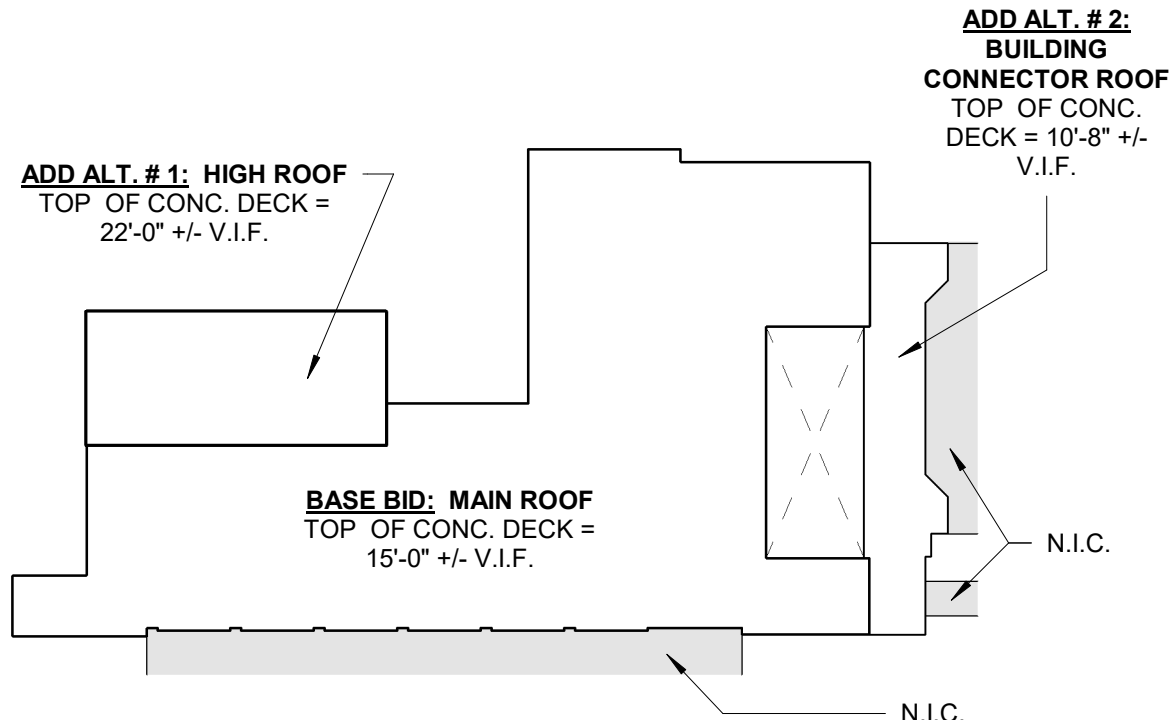
KEYNOTE LEGEND

- 0148 DEMOLISH METAL GOOSE NECK VENT ASSEMBLY, METAL FLASHING, WOOD BLOCKING AND/OR CURB DOWN TO TOP OF CONCRETE ROOF DECK. SEE DETAIL - 7 / A013
- 0149 DEMOLISH ALL LEAD FLASHING, MEMBRANE, MASTIC AND SEALANT ON VENT PIPE DOWN TO TOP OF CONCRETE ROOF DECK. SEE DETAIL - 10 / A013
- 0150 DISCONNECT EXHAUST FAN ASSEMBLY. REMOVE FROM SUPPORT CURB AND SET ASIDE FOR RE-INSTALLATION ON NEW CURB. DEMOLISH EXISTING SUPPORT CURB ASSEMBLY AND BLOCKING DOWN TO TOP OF CONCRETE ROOF DECK. SEE DETAIL - 6 / A013
- 0161 PULL BACK LIGHTNING PROTECTION ATTACHED TO THIS PARAPET AND ACCESS LADDER AND SECURE TO N.I.C. ROOF UNTIL RENOVATION WORK IS COMPLETE AND REINSTALL.
- 0162 DISCONNECT POWER TO PARAPET MOUNTED LIGHT FIXTURE, PULL BACK WIRING TO AN INTERIOR LOCATION AND DEMOLISH (2) 1" DIAMETER GALV. METAL CONDUITS, FITTINGS, JUNCTION BOXES AND SUPPORT CURBS WITHIN THE DEMOLISHED ROOF AREA. LIGHT FIXTURE IS EXISTING TO REMAIN.
- 0166 DEMOLISH ALL METAL FLASHING, MEMBRANE, CANTS, MASTIC AND BLOCKING AT CONCRETE SUPPORT BASE. TEMPORARILY DISCONNECT AND REMOVE AIR HANDLER ASSEMBLY, SHOCK ABSORBER BASE, AND STEEL BEAM DUNNAGE FROM TOP OF CONCRETE SUPPORT BASE. SEE DETAIL - 4 / A013
- 0167 DEMOLISH MEMBRANE FLASHING AND CANT STRIPS. PREP FACE OF CURB AND DUCT TRANSITION FOR NEW LIQUID FLASHING SYSTEM AT BASE.
- 0168 DEMOLISH EXHAUST FAN ASSEMBLY, ELECTRICAL SERVICE, SUPPORT CURB AND FLASHING DOWN TO TOP OF CONCRETE ROOF DECK. TERMINATE ELECTRICAL BELOW ROOF DECK AND CAP.
- 0190 EXISTING TO REMAIN - N.I.C.

DEMOLITION LEGEND

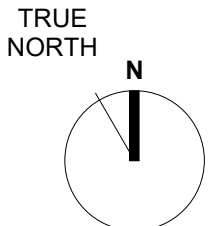
- PLUMBING VENT STACK
- ROOF DRAIN
- REMOVE EXISTING ROOF SYSTEM AND ALL FLASHING DOWN TO TOP OF EXISTING ROOF DECK
- REFERENCE FOR PHOTOGRAPH OF EXISTING CONDITION
- EXHAUST FAN ASSEMBLY ON CURB
- DUCT PENETRATION AND AIR HANDLING ASSEMBLY ON CURBS

KEY PLAN



1 ROOF PLAN - DEMOLITION

3/32" = 1'-0"



WEATHERPROOF DAILY: CONTRACTOR SHALL SEAL THE ROOF ON THE SAME DAY AS ANY DEMO/INSTALLATION. IN ADDITION, THE CONTRACTOR SHOULD NOT REMOVE MORE ROOF THAN CAN BE REPLACED IN THE SAME DAY, KEEPING WATCH ON HOURLY LOCAL RAIN FORECASTS.

The graphic scale at the bottom left corner of this drawing must measure 1"x1" otherwise all listed scales are null and void.

HOLLY & SMITH ARCHITECTS

HAMMOND
T 985.345.5210
NEW ORLEANS
T 504.585.1315
LAFAYETTE
T 337.279.2010
www.hollyandsmith.com

ENGINEERING ANNEX ROOF REPLACEMENT
UNIVERSITY OF NEW ORLEANS
2000 LAKESHORE DRIVE, NEW ORLEANS, LA

STATE PROJECT NO. 01-107-24-05, F01004598 SITE CODE: 1-36-038
U.N.O. PROJECT #: SP5286 U.N.O. PURCHASING BID #: BTR2858



NO.	DESCRIPTION	DATE
2	ADDENDUM 02	04/24/25

PROJECT NO.	24054
PHASE	CD
DATE	02/07/25
PROJECT MANAGER	RK
QUALITY CONTROL	AV

This drawing, as an instrument of service, is and shall remain the property of the Architect and shall not be reproduced, published, or used in any way without the permission of the Architect.
© Holly & Smith Architects, APAC

BID DOCUMENTS

A001

DEMOLITION PLAN

H/S

4/23/2025 9:55:36 AM

C:\Revit Models\24054 - UNO Engineering Annex Roof Replacement.rvt

GENERAL NOTES

- TYPICAL ROOF SYSTEM:** COLD APPLIED SBS MODIFIED BITUMEN ROOF SYSTEM ON 1/2" COVER BOARD AND AN R-25 AVERAGE TAPERED POLYISO INSULATION VALUE ON EXISTING CAST CONCRETE ROOF DECK. ENTIRE SYSTEM IS SET IN ADHESIVE ON EXISTING ROOF DECK IN PATTERN ENGINEERED BY ROOF MEMBRANE MANUFACTURER TO RESIST UPLIFT. PROVIDE 3/16" PER FOOT SLOPE TYPICAL UNLESS NOTED OTHERWISE. REFER TO DETAILS AND SPECIFICATIONS FOR MORE INFORMATION.
- LIGHTNING PROTECTION SYSTEM:** PROVIDE LIGHTNING PROTECTION SYSTEM THROUGHOUT AREAS WHERE ROOF IS REPLACED UNLESS NOTED OTHERWISE. RE-USE EXISTING ALUMINUM THREADED GROUND RODS ATTACHED TO ROOF DECK WHERE POSSIBLE. SEE DETAIL - 7 / A911
- METAL FLASHING:** ALL METAL FLASHING, COUNTER FLASHING, EDGE METAL AND COPING NOTED IN THE DRAWINGS SHALL BE 24 G.A. STAINLESS STEEL TO MATCH THE EXISTING 9 STORY ROOF.
- SEE SHEET A911 FOR ROOFING DETAILS. WHERE DETAILS ARE NOT SHOWN, PROVIDE STANDARD DETAILS AS RECOMMENDED BY THE ROOFING MANUFACTURER AND NRCA. REPORT ANY DISCREPANCIES BETWEEN DETAILS, MANUFACTURER'S RECOMMENDATIONS, AND FIELD CONDITIONS TO THE ARCHITECT.
- THE WORK SHALL INCLUDE THE INSTALLATION OF 18 SQUARES OF MODIFIED BITUMEN CAP SHEET PLIES ONLY AS DETERMINED BY ARCHITECT TO ELIMINATE PONDING OBSERVED DURING PONDING WATER INSPECTION. FOR ANY QUANTITY REQUIRED BEYOND THIS AMOUNT, REFER TO UNIT PRICE SPECIFICATION.
- WHERE DETAILS ARE NOT SHOWN, PROVIDE STANDARD DETAILS AS RECOMMENDED BY THE ROOFING MANUFACTURER AND NRCA. REPORT ANY DISCREPANCIES BETWEEN DETAILS, MANUFACTURER'S RECOMMENDATIONS, AND FIELD CONDITIONS TO THE ARCHITECT. COMPLY WITH MANUFACTURER'S RECOMMENDATIONS FOR ROOF PENETRATIONS, FLASHINGS, ETC.
- DIMENSIONS, ROOF THICKNESSES, LOCATIONS, SIZES AND ORIENTATIONS OF ALL ROOF AREAS AND ROOF MOUNTED ITEMS ARE ALL APPROXIMATE. FIELD VERIFY ALL CONDITIONS THROUGHOUT.
- ALL ELECTRICAL, MECHANICAL AND/OR PLUMBING WORK REQUIRED TO BE DISCONNECTED, RECONFIGURED, EXTENDED, RELOCATED AND/OR TO HAVE EXISTING LINES REPOSITIONED SHALL MEET ALL APPLICABLE CODE REQUIREMENTS AND REGULATIONS.
- PROVIDE REINFORCED LIQUID FLASHING AT ALL PIPE AND CONDUIT PENETRATIONS THROUGH ROOF ASSEMBLY, WHETHER SHOWN ON PLAN OR NOT, UNLESS DETERMINED TO NO LONGER BE IN SERVICE. IF NO LONGER IN SERVICE CAP LINE BELOW ROOF DECK.
- PATCH CHIPPED OR SPALLED PORTIONS OF CAST STONE WALL PANELS AT SEALANT JOINTS AND/OR FLASHING CONDITIONS WITH CEMENTITIOUS MORTAR.
- AVOID INSTALLING FASTENERS IN CONCRETE SUBSTRATE WITHIN 2" OF CONCRETE EDGE OR CORNER. FOLLOW ACI GUIDELINES TYPICAL.

KEYNOTE LEGEND

- 0560 PREP, PRIME AND PAINT EXISTING STEEL ACCESS LADDER WITH GALVANIZING PAINT. THIS WORK SHALL BE PART OF THE BASE BID. SEE DETAIL - 4 / A912
- 0710 FLASH NEW ROOF SYSTEM INTO EXISTING EXHAUST FAN SUPPORT CURB. SEE DETAIL - 1 / A911
- 0713 FLASH NEW ROOF SYSTEM INTO EXISTING CURB ENCLOSED DUCT PENETRATION. SEE DETAIL - 1 / A911
- 0721 PROVIDE TAPERED INSULATION CRICKET AS SHOWN WITH 1/2" PER 1'-0" SLOPE TO GUIDE STORM WATER TOWARDS DRAINS.
- 0722 INSTALL NEW CAST IRON DOME, COLLAR AND EXTENSION AT EXISTING DRAIN BASIN. COORDINATE INSTALLATION WITH TAPERED INSULATION SUMP. SEE DETAIL - 6 / A911
- 0725 INSULATED ROOF HATCH ASSEMBLY ON TREATED BLOCKING. SEE DETAIL - 10 / A912
- 0730 FLASH ROOF SYSTEM INTO EXISTING VENT STACK. SEE DETAIL - 5 / A911
- 0740 24 GA S.S. GOOSE NECK VENT ON INSULATED CURB MATCHING SIZE, FUNCTION AND CONFIGURATION OF DEMOLISHED ASSEMBLY. COORDINATE INSTALLATION WITH CONNECTION TO EXISTING DUCT. SEE DETAIL - 2 / A911
- 0741 ALUMINUM EXHAUST VENT MATCHING SIZE, FUNCTION AND CONFIGURATION OF DEMOLISHED ASSEMBLY. SEE DETAIL - 4 / A911
- 0742 RECONNECT AND MOUNT EXISTING AIR HANDLING UNIT WITH SHOCK ABSORBERS AND STEEL DUNNAGE TO CONCRETE BASE IN SAME CONFIGURATION AS ORIGINAL INSTALLATION. PREP, PRIME AND PAINT STEEL DUNNAGE WITH GALVANIZING PAINT. REPLACE EXISTING NUTS AT ANCHOR BOLTS AS NEEDED.
- 0761 24 GA S.S. METAL COPING W/ DRIP EDGE. SEE DETAIL - 8 / A911
- 0762 FLASH 24 GA S.S. METAL THROUGH WALL SCUPPER INTO EXISTING OPENING IN CAST STONE PARAPET. SEE DETAIL - 10 / A911

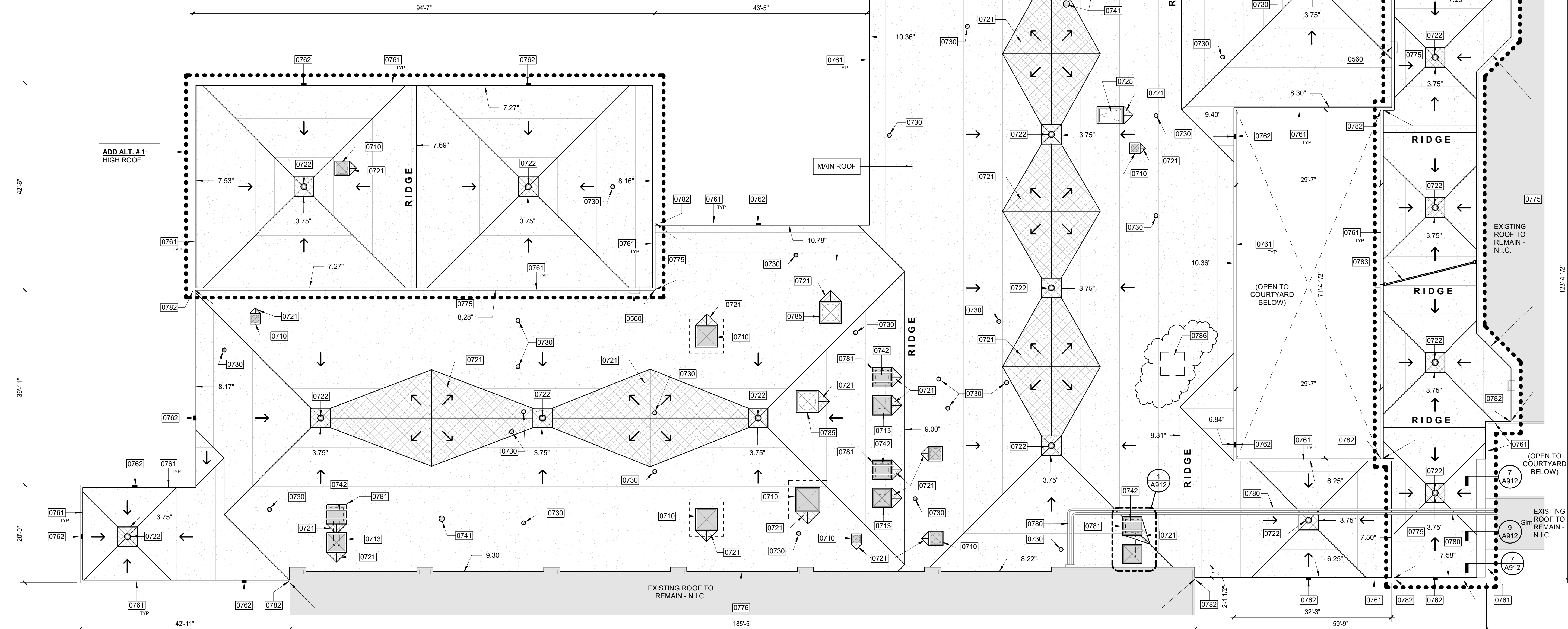
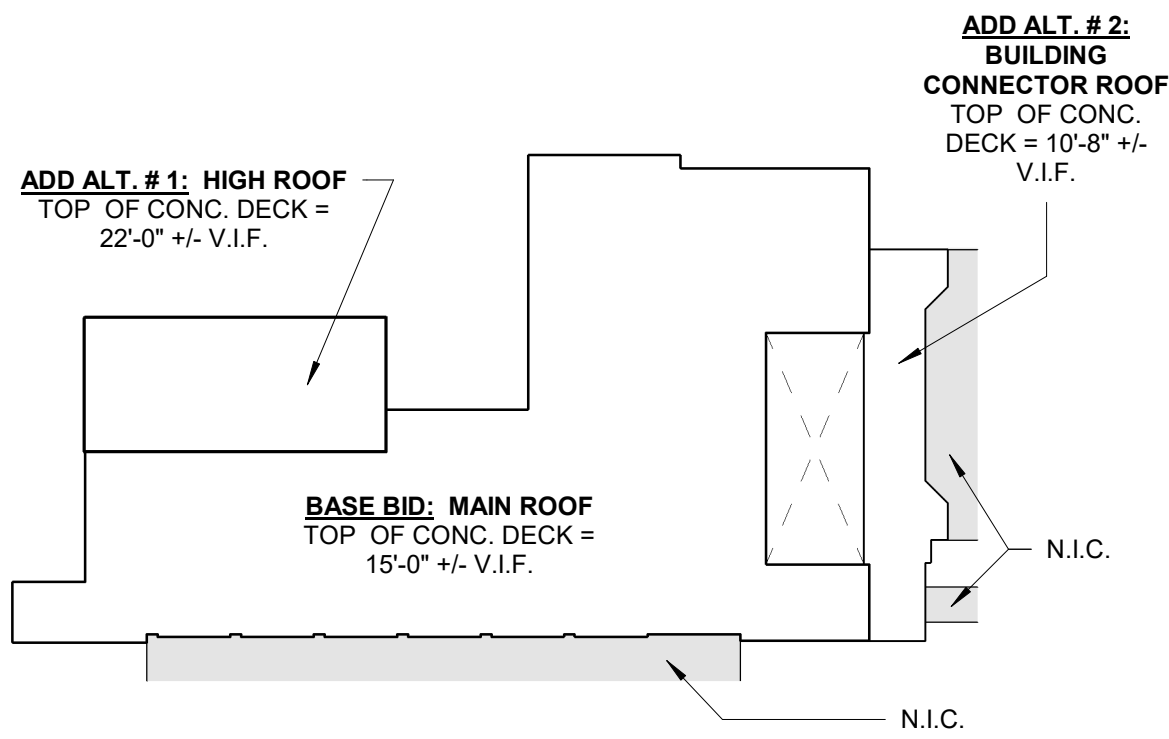
KEYNOTE LEGEND

- 0775 INSTALL SILICONE SEALANT AND BACKER ROD IN EXISTING VERTICAL AND HORIZONTAL JOINTS IN CAST STONE PANELS FROM ROOF DECK UP TO TOP OF PARAPET ABOVE AT EXTERIOR SIDE OF FACADE. SEE TYPICAL DETAIL - 3 / A912
- 0776 INSTALL SILICONE SEALANT AND BACKER ROD IN EXISTING JOINTS IN CAST STONE PANELS FROM ROOF DECK UP TO NEAREST HORIZONTAL JOINT AT APPROXIMATELY 12'-0" ABOVE ROOF. WHERE CAST STONE PANELS SLOPE INTO INSET WINDOWS, CONTINUE SEALANT ASSEMBLY ON SLOPED JOINTS UP TO BOTTOM OF SILL FLASHING AT BASE OF WINDOW. SEE TYPICAL DETAIL - 3 / A912
- 0780 FLASH BASE OF EXISTING GALVANIZED STEEL PIPE SUPPORTS AT EXISTING ELECTRICAL CONDUITS. MAINTAIN OPERATION OF CONDUITS THROUGHOUT RENOVATION. SEE DETAIL - 3 / A911
- 0781 INSTALL NEW INSULATED CURB AT PERIMETER OF EXISTING CONCRETE BASE AND COVER WITH LIQUID FLASHING AND 24 GA S.S. METAL CAP FLASHING. SEE DETAIL - 11 / A911
- 0782 PROVIDE 24 GA S.S. METAL SADDLE FLASHING FOR COPING WHERE PARAPET TERMINATES INTO PERPENDICULAR WALL. SEE DETAIL - 6 / A912
- 0783 REPLACE DEMOLISHED CONDUITS WITH (2) 1" DIAMETER GALV. METAL CONDUITS ON RUBBER CURBS AT 48" O.C. AND RE-FEED EXISTING PARAPET MOUNTED LIGHT FIXTURE. PROVIDE NEW GALV. METAL JUNCTION BOXES, FITTINGS AND MEET N.E.C. REQUIREMENTS FOR ALL MATERIALS AND INSTALLATION.
- 0785 FLASH NEW ROOF SYSTEM INTO NEW INSULATED SUPPORT CURB AND REINSTALL EXISTING EXHAUST FAN ON TOP. SEE DETAIL - 2 / A911
- 0786 INFILL EXISTING EXHAUST FAN OPENING WITH GALVANIZED METAL DECK AND PERIMETER SUPPORT ANGLES. SEE DETAIL - 11 / A912

ROOF LEGEND

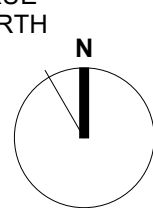
- TYP. ROOF SYSTEM:** SEE GENERAL NOTES
- CRICKETS AND ROOF DRAIN SUMP:** SBS MODIFIED BITUMEN ROOF MEMBRANE OVER TAPERED ROOF INSULATION AT CRICKETS AND ROOF DRAIN SUMP (1/2":1'-0" MIN. SLOPE)
- EXISTING ROOF DRAIN LOCATION - SEE KEYNOTE FOR RENOVATION EXTENT
- ROOF DRAIN SUMP - 1/2": 1'-0" SLOPE
- EXISTING EXHAUST FAN ASSEMBLY ON CURB
- EXISTING AIR HANDLING ASSEMBLY AND DUCT PENETRATION ON CURB/ DUNNAGE
- NEW GOOSE NECK VENT ASSEMBLY ON CURB
- EXISTING PLUMBING VENT STACK TO REMAIN IN PLACE WITH NEW BASE FLASHING

KEY PLAN



1 ROOF PLAN

3/32" = 1'-0"



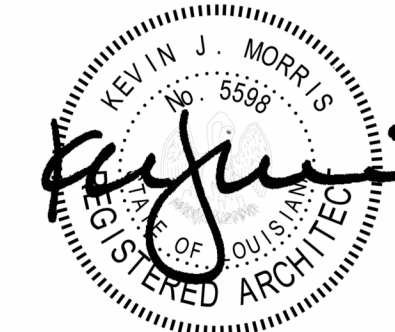
The graphic scale at the bottom left corner of this drawing must measure 1"x1" otherwise all listed scales are null and void.

HOLLY & SMITH ARCHITECTS

HAMMOND
T 985.345.5210
NEW ORLEANS
T 504.585.1315
LAFAYETTE
T 337.279.2010
www.hollyandsmith.com

ENGINEERING ANNEX ROOF REPLACEMENT UNIVERSITY OF NEW ORLEANS 2000 LAKESHORE DRIVE, NEW ORLEANS, LA

STATE PROJECT NO. 01-107-24-05, F01004598 STATE ID: S1574 SITE CODE: 1-36-038
U.N.O. PROJECT #: SP5286 U.N.O. PURCHASING BID #: BTR2558



NO.	DESCRIPTION	DATE
1	ADDENDUM 01	04/22/25
2	ADDENDUM 02	04/24/25

PROJECT NO.	24054
PHASE	CD
DATE	02/07/25
PROJECT MANAGER	RK
QUALITY CONTROL	AV

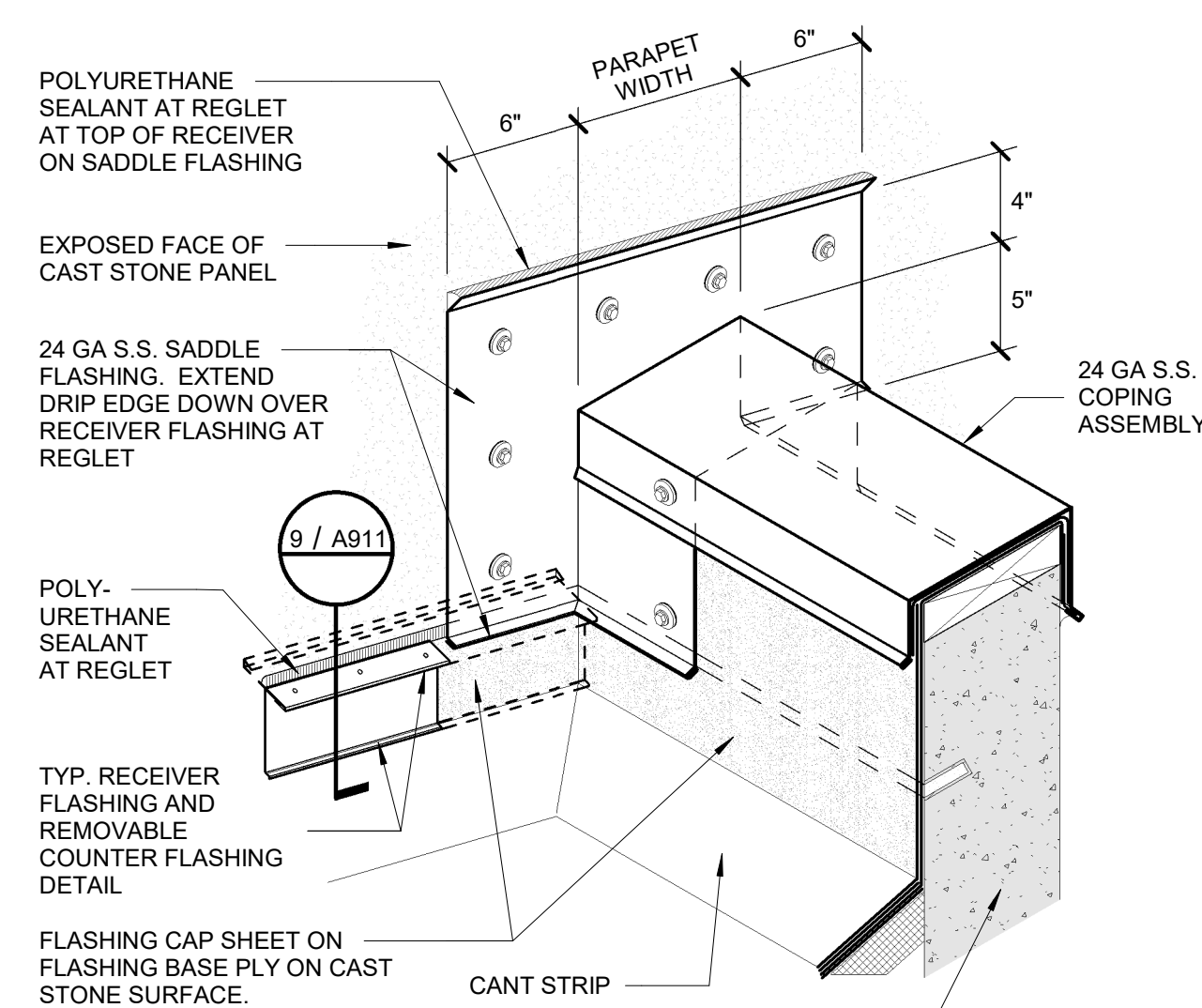
This drawing, as an instrument of service, is and shall remain the property of the Architect and shall not be reproduced, published, or used in any way without the permission of the Architect.
© Holly & Smith Architects, APAC

BID DOCUMENTS

A901

ROOF PLAN

H/S



This drawing, as an instrument of service, is and shall remain the property of the Architect and shall not be reproduced, published, or used in any way without the permission of the Architect.
© Holly & Smith Architects, APAC