



Department of Building & Grounds
Architectural Services Division

City of Baton Rouge
Parish of East Baton Rouge

P.O. Box 1471
Baton Rouge, Louisiana 70821
225 389-4694 Voice
225 389-4704 Fax

ADDENDUM #4

April 9, 2025

TO ALL BIDDERS

**PROJECT: PSC H2 Interior Renovation for Health Unit
CITY PARISH PROJECT NO. 21-ASC-CP-1564**

The following revisions shall be incorporated in and take precedence over any conflicting part of the original contract documents.

1. Clarification: X Ray equipment is to be provided by Owner. Contractor coordination is required.
2. Add, in the X Ray Room, 2 layers 5/8" gyp bd. With one layer 1/16" lead lining panel (to match S1 shielding requirements) supported by 16Ga. 6" metal studs spaced 16"o.c. And supported at 16" o.c. From the structure above. Contractor to provide all necessary clips and anchors for secure attachment of framing. Also, extend all shielding to ceiling @ 10'-0" A.F.F.
3. See attached Addendum prepared by Fusion Architects, APC and dated April 9, 2025 (11 pages).

The following revisions shall be incorporated in and take precedence over any conflicting part of the original contract documents.

TOTAL PAGES12 (INCLUDING THIS PAGE)

FAILURE TO INDICATE RECEIPT OF THIS ADDENDUM ON BID FORM MAY BE CAUSE FOR THE BID TO BE REJECTED

Rob Gray, AIA, LEED AP BD+C, Chief Architect
Architectural Services Division
1100 Laurel Street, Rm. 227
Baton Rouge, LA 70802

ADDENDUM NO. 4
04/09/2025

EAST BATON ROUGE PARISH PUBLIC SAFETY COMPLEX
H2 INTERIOR RENOVATION FOR HEALTH UNIT
CITY PARISH PROJECT NO. 21-ASC-CP-1564
9050 AIRLINE HWY
BATON ROUGE, LA 70815

BID DATE: Wednesday, April 16, 2025 at 2:00 PM

The following additions, deletions, modifications, or clarifications shall be made to the appropriate sections of the plans and specifications and shall become a part of the contract documents. Bidders shall acknowledge receipt of this Addendum in the space provided on the Bid form.

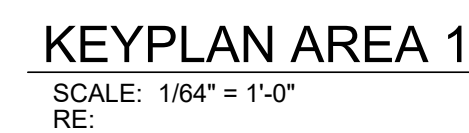
DRAWINGS

1. **Refer to attached revised Sheet A-201** for the new double egress door location, identified as Door 403.
2. **Refer to attached revised Sheet A-600** for the updated door schedule. Door 403 to match the specifications of Door 484.
3. **Refer to the attached PDF** for updated revisions to the X-ray room drawings, including specific space requirements and design adjustments.

PRIOR APPROVALS

The following list of items are approved for MANUFACTURER and/or TRADE NAME ONLY for use in this Project. Approval of these items by their inclusion in the following SHALL NOT relieve the manufacturer, supplier, contractor, or subcontractor from compliance with quality, performance, shapes, or appearance desires as set forth in the original Plans and Specifications. The Architect may, upon receipt of the Shop Drawings, disapprove any items based on quality, performance, shape and/or appearance submitted.

<u>Manufacturer</u>	<u>Product</u>
Metalaire	VAV's
Daikin	AHU's



SCOPE OF WORK - NEW - A201	
Number	ROOM NEW NOTES
201	ABEHLNP
401	ABCDGHILNPQUV
402	ABCDGHILNPQUV
403	ABDHMNOPQ
404	ABDHMNOPQ
405	ABDHL
406	ABDHLMT
407	ABDFGHILMNPQT
408	ABDHLMNPQ
409	ABDHLN
410	ABDHLN
411	ABDHLMNPQ
412	ABDHLMN
412A	ABHLMRUV
413	ABHLMNR
413A	ABDFGHIKL
413B	ABHLMRUV
414	ABDHLN
414B	XXX
419	ABDHLN
440	ABDFGHIKLMNPQ
440A	ABDFGHIKL
441	ABHLMRUV
442	ABDHLMPQ
443	ABHLMRUV
443A	ABDFGHIKL
443B	ABDHLMRUV
444	ABDHLMN
445	ABFHILMPQR
445B	ABHLMRUV
446	ABDHLMNOPQ
467	ABDHLMNO
468	ABDHLMNOPQS
468	ABDHL

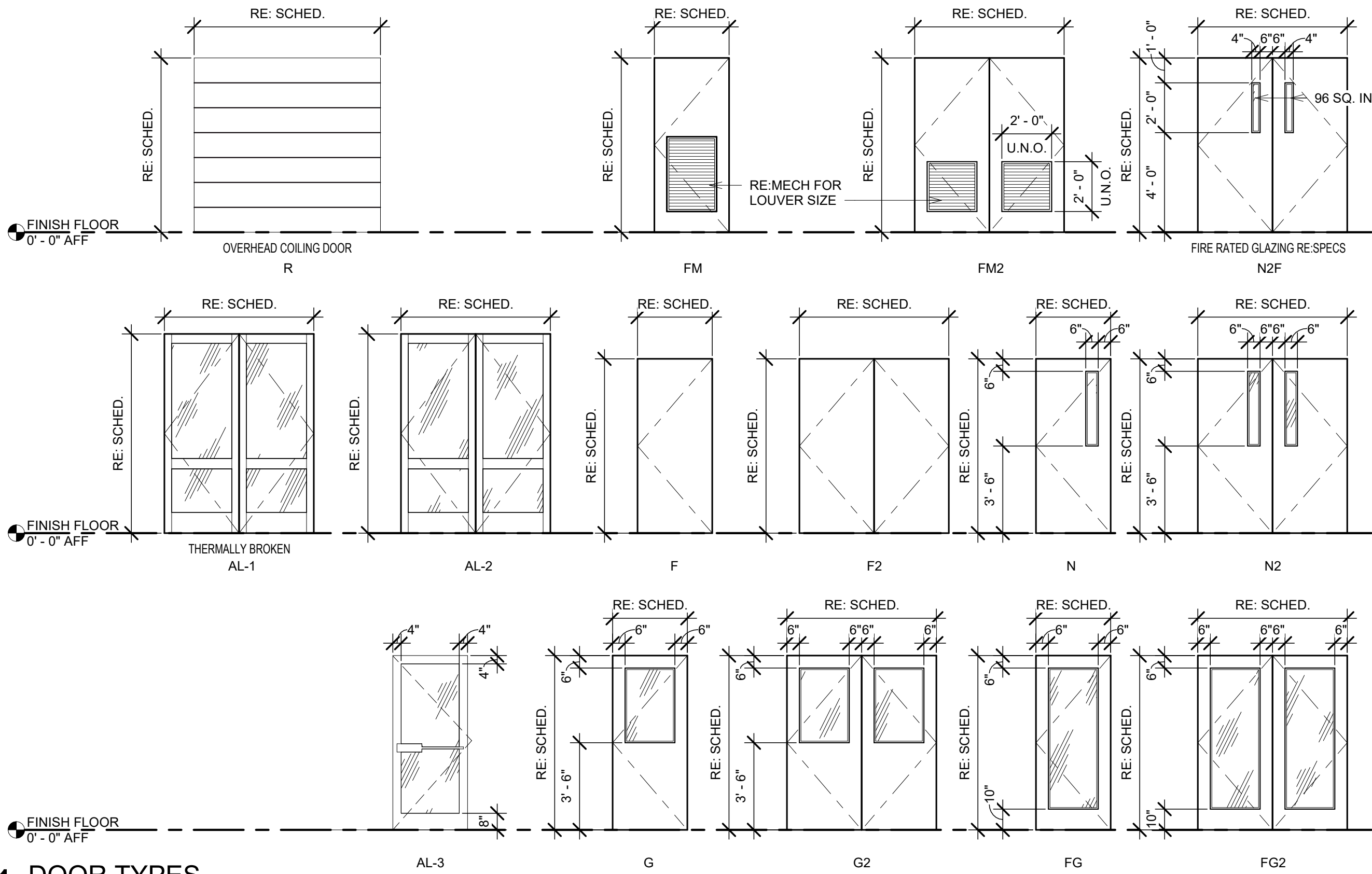
- A. INSTALL NEW FLOORING PER FINISH SCHEDULE, RE: FINISH SCHEDULE.
- B. INSTALL NEW LIGHTING, RECEPTACLES, AND SWITCHES, TYPICAL THROUGHOUT ROOM, RE: ELECTRICAL.
- C. INSTALL NEW TOILET PARTITIONS AND HARDWARE, TYP. RE: SPECS.
- D. INSTALL NEW SUSPENDED ACOUSTICAL TILE CEILING, RE: SPECS.
- E. INSTALL NEW SUSPENDED ACOUSTICAL CEILING TILES WHERE REQUIRED, RE: SPECS.
- F. REPAIR EXISTING MILLWORK IN AREA INDICATED. REPLACE MISSING OR DAMAGED DRAWERS / CABINETS. INSTALL NEW HARDWARE TO MATCH EXISTING. REFINISH ANY NEW COMPONENTS PER FINISH SCHEDULE, RE FINISH SCHEDULE.
- G. PATCH HOLES IN MILLWORK, AND PREP FOR AND APPLY NEW FINISH, RE: FINISH SCHEDULE.
- H. PREP / PRIME / PAINT ALL EXISTING AND NEW WALLS, EXPOSED CONDUIT, FURR DOWNS, AND EXPOSED DUCTWORK THROUGHOUT ROOM, RE: FINISH SCHEDULE.
- I. INSTALL NEW PLASTIC LAMINATE SURFACING EITHER OVER EXISTING WHERE SURFACE IS NOT DELAMINATED, OR OVER PREVIOUSLY REMOVED AND PREPARED SURFACE, RE: FINISH SCHEDULE.
- J. CLEAN EXISTING FLOORING TO REMAIN.
- K. SANITIZE AREA INSIDE OF EXISTING MILLWORK AND REINSTALL DRAWERS.
- L. INSTALL NEW RUBBER BASE THROUGHOUT ROOM, RE: FINISH SCHEDULE.
- M. RE-FLOAT GYPSUM BOARD AND PREP FOR NEW PAINT, RE: FINISH SCHEDULE.
- N. NEW EXISTING DOORS, FRAMES, AND HARDWARE TO BE SANITIZED, PAINTED, AND CLEANED THOROUGHLY.
- O. EXISTING ALUMINUM STOREFRONT DOORS AND WINDOW SYSTEM TO BE SANITIZED AND CLEANED THOROUGHLY.
- P. INTERIOR AND EXTERIOR DOOR AND WINDOW GLASS TO BE SANITIZED AND CLEANED THOROUGHLY.
- Q. SEAL AND PAINT WINDOWILL.
- R. PATCH AND INSTALL NEW LIGHTING AND VENT SYSTEM IN EXISTING CEILING PER NEW REFLECTED CEILING PLAN, RE: A-300/A-301.
- S. INSTALL NEW PLASTIC LAMINATE FINISH ON EXISTING CHAIR RAILS, RE: FINISH SCHEDULE.
- T. INSTALL NEW MILLWORK AS INDICATED ON PLAN, RE: A-730.
- U. INSTALL NEW TOILET ACCESSORIES THROUGHOUT.
- V. INSTALL NEW PLUMBING FIXTURES, RE: PLUMBING.

P-#	WALL PARTITION TYPE
	NEW WALL
	EXISTING WALL

C:\Users\Athena\Documents\2019-2021 - Health Unit - Centrol_524_cathrineSD\10x.rvt 4/9/2025 8:25:21 AM

DOOR SCHEDULE

										HARDWARE																									
		DOOR						FRAME				HINGES		CYLINDER		LOCKSET		HANDLE		PULL HANDLE		CLOSER		EXIT DEVICE		KICK PLATE		FIRE RATING		NEW DOOR					
NEW DOOR	TYPE	WIDTH	HEIGHT	DOOR MATERIAL	FRAME TYPE	FRAME MATERIAL	4in Head	DEPTH	COMMENTS																										
403	N2	6'-0"	7'-0"	HM	F03	HM		V.O.J.	DOUBLE EGRESS DOOR W/ MAGNET HOLDER										*								*	*						403	
404	N	3'-0"	7'-0"	HM	F01	HM		V.O.J.											*	*	*	*	*	*	*	*	*	*	*	*	*	*			404
405	F	3'-0"	7'-0"	HM	F01	HM		5 7/8"											*	*	*	*	*	*	*	*	*	*	*	*	*	*		45 MIN.	405
407A	N	3'-0"	7'-0"	HM	F01	HM		V.O.J.	CARD ACCESS REQ., RE: SPECS										*	*	*	*	*	*	*	*	*	*	*	*	*	*		407A	
407B	N	3'-0"	7'-0"	HM	F01	HM		5 7/8"	CARD ACCESS REQ., RE: SPECS										*	*	*	*	*	*	*	*	*	*	*	*	*	*		407B	
408	F	3'-0"	7'-0"	HM	F01	HM		V.O.J.	CARD ACCESS REQ., RE: SPECS										*	*	*	*	*	*	*	*	*	*	*	*	*	*		408	
409	F	3'-0"	7'-0"	HM	F01	HM		V.O.J.	CARD ACCESS REQ., RE: SPECS										*	*	*	*	*	*	*	*	*	*	*	*	*	*		409	
411	N	3'-0"	7'-0"	HM	F01	HM		5 7/8"	CARD ACCESS REQ., RE: SPECS										*	*	*	*	*	*	*	*	*	*	*	*	*	*		411	
412B	F	3'-0"	7'-0"	HM	F01	HM		V.O.J.											*	*	*	*	*	*	*	*	*	*	*	*	*	*		412B	
413	F	3'-0"	7'-0"	HM	F01	HM		V.O.J.											*	*	*	*	*	*	*	*	*	*	*	*	*	*		413	
413A	F	3'-0"	7'-0"	HM	F01	HM		V.O.J.											*	*	*	*	*	*	*	*	*	*	*	*	*	*		413A	
415A	F	3'-0"	7'-0"	HM	F01	HM		V.O.J.											*	*	*	*	*	*	*	*	*	*	*	*	*	*		415A	
415B	F	3'-0"	7'-0"	HM	F01	HM		V.O.J.											*	*	*	*	*	*	*	*	*	*	*	*	*	*		415B	
416A	F	3'-0"	7'-0"	HM	F01	HM		V.O.J.											*	*	*	*	*	*	*	*	*	*	*	*	*	*		416A	
416B	F	3'-0"	7'-0"	HM	F01	HM		V.O.J.											*	*	*	*	*	*	*	*	*	*	*	*	*	*		416B	
417A	F	3'-0"	7'-0"	HM	F01	HM		V.O.J.											*	*	*	*	*	*	*	*	*	*	*	*	*	*		417A	
417B	F	3'-0"	7'-0"	HM	F01	HM		V.O.J.											*	*	*	*	*	*	*	*	*	*	*	*	*	*		417B	
418A	F	3'-0"	7'-0"	HM	F01	HM		V.O.J.											*	*	*	*	*	*	*	*	*	*	*	*	*	*		418A	
418B	F	3'-0"	7'-0"	HM	F01	HM		V.O.J.											*	*	*	*	*	*	*	*	*	*	*	*	*	*		418B	
422	F	3'-0"	7'-0"	HM	F01	HM		5 7/8"	CARD ACCESS REQ., RE: SPECS										*	*	*	*	*	*	*	*	*	*	*	*	*	*		422	
423	F	3'-0"	7'-0"	HM	F01	HM		5 7/8"	CARD ACCESS REQ., RE: SPECS										*	*	*	*	*	*	*	*	*	*	*	*	*	*		423	
424	F	3'-0"	7'-0"	HM	F01	HM		5 7/8"	CARD ACCESS REQ., RE: SPECS										*	*	*	*	*	*	*	*	*	*	*	*	*	*	45 MIN.	424	
425	F	3'-0"	7'-0"	HM	F01	HM		V.O.J.	CARD ACCESS REQ., RE: SPECS										*	*	*	*	*	*	*	*	*	*	*	*	*	*		425	
429	F	3'-0"	7'-0"	HM	F01	HM		5 7/8"	CARD ACCESS REQ., RE: SPECS										*	*	*	*	*	*	*	*	*	*	*	*	*	*		429	
430	F	3'-0"	7'-0"	HM	F01	HM		5 7/8"											*	*	*	*	*	*	*	*	*	*	*	*	*	*		430	
431	F	3'-0"	7'-0"	HM	F01	HM		5 7/8"											*	*	*	*	*	*	*	*	*	*	*	*	*	*		431	
432	F	3'-0"	7'-0"	HM	F01	HM		V.O.J.											*	*	*	*	*	*	*	*	*	*	*	*	*	*		432	
433	F	3'-0"	7'-0"	HM	F01	HM		V.O.J.											*	*	*	*	*	*	*	*	*	*	*	*	*	*		433	
434	F	3'-0"	7'-0"	HM	F01	HM		V.O.J.											*	*	*	*	*	*	*	*	*	*	*	*	*	*		434	
435	F	3'-0"	7'-0"	HM	F01	HM		5 7/8"											*	*	*	*	*	*	*	*	*	*	*	*	*	*		435	
436A	F	3'-0"	7'-0"	HM	F01	HM		V.O.J.	CARD ACCESS REQ., RE: SPECS										*	*	*	*	*	*	*	*	*	*	*	*	*	*		436A	
436B	F	3'-0"	7'-0"	HM	F01	HM		V.O.J.	CARD ACCESS REQ., RE: SPECS										*	*	*	*	*	*	*	*	*	*	*	*	*	*		436B	
437	F	3'-0"	7'-0"	HM	F01	HM		V.O.J.	CARD ACCESS REQ., RE: SPECS										*	*	*	*	*	*	*	*	*	*	*	*	*	*		437	
440	F	3'-0"	7'-0"	HM	F01	HM		5 7/8"											*	*	*	*	*	*	*	*	*	*	*	*	*	*		440	
441	F	3'-0"	7'-0"	HM	F01	HM		V.O.J.											*	*	*	*	*	*	*	*	*	*	*	*	*	*		441	
442		3'-0"	7'-0"					V.O.J.	ALUMINUM DOOR W/ AUTOMATIC DOOR OPENER- RE: SPECS										*	*	*	*	*	*	*	*	*	*	*	*	*	*		442	
443A	F	3'-0"	7'-0"	HM	F01	HM		V.O.J.											*	*	*	*	*	*	*	*	*	*	*	*	*	*		443A	
443B	F	3'-0"	7'-0"	HM	F01	HM		V.O.J.											*	*	*	*	*	*	*	*	*	*	*	*	*	*		443B	
445A	F	3'-0"	7'-0"	HM	F01	HM		5 7/8"											*	*	*	*	*	*	*	*	*	*	*	*	*	*		445A	
445B	F	3'-0"	7'-0"	HM	F01	HM		V.O.J.											*	*	*	*	*	*	*	*	*	*	*	*	*	*		445B	
446A	F	3'-0"	7'-0"	HM	F01	HM		V.O.J.											*	*	*	*	*	*	*	*	*	*	*	*	*	*		446A	
446B	F	3'-0"	7'-0"	HM	F01	HM		V.O.J.											*	*	*	*	*	*	*	*	*	*	*	*	*	*		446B	
447A	F	3'-0"	7'-0"	HM	F01	HM		5 7/8"											*	*	*	*	*	*	*	*	*	*	*	*	*	*		447A	
447B	F	3'-0"	7'-0"	HM	F01	HM		V.O.J.											*	*	*	*	*	*	*	*	*	*	*	*	*	*		447B	
448A	F	3'-0"	7'-0"	HM	F01	HM		V.O.J.	CARD ACCESS REQ.,RE: SPECS										*	*	*	*	*	*	*	*	*	*	*	*	*	*		448A	
448B	F	3'-0"	7'-0"	HM	F01	HM		V.O.J.											*	*	*	*	*	*	*	*	*	*	*	*	*	*		448B	
454	FG	3'-0"	7'-0"	WD	F01	HM		5 7/8"	ALUMINUM DOOR - RE: SPECS										*	*	*	*	*	*	*	*	*	*	*	*	*	*		454	
456	F	3'-0"	7'-0"	HM	F01	HM		V.O.J.											*	*	*	*	*	*	*	*	*	*	*	*	*	*		456	
456A	F	3'-0"	7'-0"	HM	F01	HM		5 7/8"											*	*	*	*	*	*	*	*	*	*	*	*	*	*		456A	
457	F	3'-0"	7'-0"	HM	F01	HM		V.O.J.											*	*	*	*	*	*	*	*	*	*	*	*	*	*		457	
460	F	3'-0"	7'-0"	HM	F01	HM		5 7/8"											*	*	*	*	*	*	*	*	*	*	*	*	*	*		460	
467A		3'-0"	7'-0"					V.O.J.	ALUMINUM DOOR W/ AUTOMATIC DOOR OPENER- RE: SPECS										*	*	*	*	*	*	*	*	*	*	*	*	*	*		467A	
467B	N	3'-0"	7'-0"	HM	F01	HM		5 7/8"	EGRESS DOOR W/ ELECTRONIC UNLOCK RELEASE DEVICE										*	*	*	*	*	*	*	*	*	*	*	*	*	*		467B	
470	N2	6'-0"	7'-0"	HM	F03	HM		V.O.J.	DOUBLE EGRESS DOOR W/ MAGNET HOLDER										*	*	*	*	*	*	*	*	*	*	*	*	*	*		470	
474	N2	6'-0"	7'-0"	HM	F03	HM		V.O.J.	DOUBLE EGRESS DOOR W/ MAGNET HOLDER										*	*	*	*	*	*	*	*	*	*	*	*	*	*		474	
477	N2	6'-0"	7'-0"	HM	F03	HM		V.O.J.	DOUBLE EGRESS DOOR W/ MAGNET HOLDER										*	*	*	*	*	*	*	*	*	*	*	*	*	*		477	
477C	F	3'-0"	7'-0"	HM	F01	HM		V.O.J.	CARD ACCESS REQ., RE: SPECS										*	*	*	*	*	*	*	*	*	*	*	*	*	*		477C	
478	F	3'-0"	7'-0"	HM	F01	HM		V.O.J.											*	*	*	*	*	*	*	*	*	*	*	*	*	*		478	
480	N2	6'-0"	7'-0"	HM	F03	HM		V.O.J.	DOUBLE EGRESS DOOR W/ MAGNET HOLDER										*	*	*	*	*	*	*	*	*	*	*	*	*	*		480	
482	F	3'-0"	7'-0"	HM	F01	HM		V.O.J.											*	*	*	*	*	*	*	*	*	*	*	*	*	*		482	
483	F	3'-0"	7'-0"	HM	F01	HM		5 7/8"											*	*	*	*	*	*	*	*	*	*	*	*	*	*		483	
484	N2	6'-0"	7'-0"	HM	F03	HM		V.O.J.	DOUBLE EGRESS DOOR W/ MAGNET HOLDER										*	*	*	*	*	*	*	*	*	*	*	*	*	*		484	
487	N2	6'-0"	7'-0"	HM	F03	HM		V.O.J.	DOUBLE EGRESS DOOR W/ MAGNET HOLDER										*	*	*	*	*	*	*	*	*	*	*	*	*	*		487	
489	F	3'-0"	7'-0"	HM	F01	HM		5 7/8"											*	*	*	*	*	*	*	*	*	*	*	*	*	*		489	
491	F	3'-0"	7'-0"	HM	F01	HM		5 7/8"											*	*	*	*	*	*	*	*	*	*	*	*	*	*		491	
492	F	3'-0"	7'-0"	HM	F01	HM		V.O.J.											*	*	*	*	*	*	*	*	*	*	*	*	*	*	45 MIN.	492	
493	F	3'-0"	7'-0"	HM	F01	HM		5 7/8"											*	*	*	*	*	*	*	*	*	*	*	*	*	*		493	
503	F	3'-0"	7'-0"	HM	F01	HM		5 7/8"											*	*	*	*	*	*	*	*	*	*	*	*	*	*		503	
504	F	3'-0"	7'-0"	HM	F01	HM		5 7/8"											*	*	*	*	*	*	*	*	*	*	*	*	*	*		504	
506	F	3'-0"	7'-0"	HM	F01	HM		5 7/8"											*	*	*	*	*	*	*	*	*	*	*	*	*	*		506	
507	F	3'-0"	7'-0"	HM	F01	HM		5 7/8"											*	*	*	*	*	*	*	*	*	*	*	*	*	*		507	
509	F	3'-0"	7'-0"	HM	F01	HM		V.O.J.	CARD ACCESS REQ., RE: SPECS										*	*	*	*	*	*	*	*	*	*	*	*	*	*		509	
509A	F	3'-0"	7'-0"	HM	F01	HM		V.O.J.											*	*	*	*	*	*	*	*	*	*	*	*	*	*		509A	
509B	F	3'-0"	7'-0"	HM	F01	HM		V.O.J.											*	*	*	*	*	*	*	*	*	*	*	*	*	*		509B	
509C	F	3'-0"	7'-0"	HM	F01	HM		V.O.J.											*	*	*	*	*	*	*	*	*	*	*	*	*	*		509C	
510	FG	3'-0"	7'-0"	WD	F01	HM		5 7/8"	NEW ALUMINUM DOOR - RE: SPECS										*	*	*	*	*	*	*	*	*	*	*	*	*	*		510	
511	F	3'-0"	7'-0"	HM	F01	HM		5 7/8"											*	*	*	*	*	*	*	*	*	*	*	*	*	*		511	
512	FG	3'-0"	7'-0"	WD	F01	HM		5 7/8"	NEW ALUMINUM DOOR - RE: SPECS/CARD ACCESS REQ., RE: SPECS										*	*	*	*	*	*	*	*	*	*	*	*	*	*		512	
513	G	3'-0"	7'-0"	HM	F01	HM		5 7/8"	CARD ACCESS REQ.,RE: SPECS										*	*	*	*	*	*	*	*	*	*	*	*	*	*		513	
514	N2	6'-0"	7'-0"	HM	F03	HM		V.O.J.	DOUBLE EGRESS DOOR W/ ELECTRONIC UNLOCK RELEASE DEVICE AND CARD ACCESS REQ., RE: SPECS										*	*	*	*	*	*	*	*	*	*	*	*	*		514		
518	N2	6'-0"	7'-0"	HM	F03	HM		V.O.J.	DOUBLE EGRESS DOOR W/ ELECTRONIC UNLOCK RELEASE DEVICE AND CARD ACCESS REQ., RE: SPECS										*	*	*	*	*	*	*	*	*	*	*	*	*		518		



A1 DOOR TYPES
SCALE: 1/4" = 1'-0"
RE:

EXISTING DOOR	DOOR	Width	Height	DOOR		FRAME		DEPTH	COMMENTS	HINGES	HARDWARE							FIRE RATING	EXISTING DOOR	
	TYPE			MATERIAL	TYPE	MATERIAL	CYLINDER				LOCK/SET	HANDLE	PULL HANDLE	PUSH PLATE	CLOSER	EXIT DEVICE	KICK PLATE			
E208		3'-0"	7'-0"						EXISTING FIRE RATED DOOR - V.O.J.	*	*	*	*			*	*	*		E208
E400		3'-0"	7'-0"						EXISTING MECHANICAL ROOM DOOR - V.O.J.	*	*	*	*			*	*	*		E400
E401		3'-0"	7'-0"						EXISTING RESTROOM DOOR - V.O.J.	*	*	*	*	*		*	*	*		E401
E402		3'-0"	7'-0"						EXISTING RESTROOM DOOR - V.O.J.	*	*	*	*	*		*	*	*		E402
E403A		4'-0"	7'-2"						EXISTING ALUMINUM DOOR - V.O.J.	*	*	*	*	*		*	*	*		E403A
E403C		8'-0"	7'-0"						EXISTING RELOCATED ALUMINUM SLIDE DOOR - (V.O.J.)	*	*	*	*	*		*	*	*		E403C
E404		4'-0"	7'-2"						EXISTING ALUMINUM DOOR - V.O.J.	*	*	*	*	*		*	*	*		E404
E414A		3'-0"	7'-0"						EXISTING DOOR - V.O.J./CARD ACCESS REQ., RE: SPECS	*	*	*	*	*		*	*	*		E414A
E414B		3'-0"	7'-0"						EXISTING DOOR - V.O.J.	*	*	*	*	*		*	*	*		E414B
E419		4'-0"	7'-0"						EXISTING DOOR - V.O.J./CARD ACCESS REQ., RE: SPECS	*	*	*	*	*		*	*	*		E419
E420		3'-0"	7'-0"						EXISTING DOOR - V.O.J.	*	*	*	*	*		*	*	*		E420
E421A		3'-0"	7'-0"						EXISTING DOOR - V.O.J.	*	*	*	*	*		*	*	*		E421A
E421B		3'-0"	7'-0"						EXISTING DOOR - V.O.J.	*	*	*	*	*		*	*	*		E421B
E426		3'-0"	7'-0"						EXISTING DOOR - V.O.J.	*	*	*	*	*		*	*	*		E426
E427		3'-0"	7'-0"						EXISTING DOOR - V.O.J.	*	*	*	*	*		*	*	*		E427
E428		3'-8"	7'-0"						EXISTING DOOR - V.O.J.	*	*	*	*	*		*	*	*		E428
E436A		3'-0"	7'-0"						EXISTING DOOR - V.O.J.	*	*	*	*	*		*	*	*		E436A
E436B		3'-0"	7'-0"						EXISTING DOOR - V.O.J.	*	*	*	*	*		*	*	*		E436B
E437A		4'-0"	7'-0"						EXISTING DOOR - V.O.J./CARD ACCESS REQ., RE: SPECS	*	*	*	*	*		*	*	*		E437A
E437B		3'-0"	7'-0"						EXISTING DOOR - V.O.J./CARD ACCESS REQ., RE: SPECS	*	*	*	*	*		*	*	*		E437B
E439		6'-0"	7'-0"						EXISTING ELECTRICAL ROOM DOOR - V.O.J.	*	*	*	*	*		*	*	*		E439
E444		3'-0"	7'-0"						EXISTING ELECTRICAL ROOM DOOR - V.O.J./CARD ACCESS REQ., RE: SPECS	*	*	*	*	*		*	*	*		E444
E449		3'-0"	7'-0"						EXISTING DOOR - V.O.J.	*	*	*	*	*		*	*	*		E449
E451		3'-0"	7'-0"						EXISTING DOOR - V.O.J.	*	*	*	*	*		*	*	*		E451
E452		6'-0"	7'-0"						EXISTING ALUMINUM DOOR - V.O.J.	*	*	*	*	*		*	*	*		E452
E453		4'-0"	7'-0"						EXISTING ALUMINUM DOOR - V.O.J.	*	*	*	*	*		*	*	*		E453
E455		6'-0"	7'-0"						EXISTING ALUMINUM DOOR - V.O.J.	*	*	*	*	*		*	*	*		E455
E455A		3'-0"	7'-0"						EXISTING DOOR - V.O.J.	*	*	*	*	*		*	*	*		E455A
E459A		7'-4"	7'-0"						EXISTING DOOR - V.O.J.	*	*	*	*	*		*	*	*		E459A
E459B		3'-0"	7'-0"						EXISTING ALUMINUM DOOR - V.O.J.	*	*	*	*	*		*	*	*		E459B
E459C		6'-0"	7'-0"						EXISTING ALUMINUM DOOR - V.O.J.	*	*	*	*	*		*	*	*		E459C
E459D		3'-0"	7'-0"						EXISTING ALUMINUM DOOR - V.O.J.	*	*	*	*	*		*	*	*		E459D
E466C		3'-0"	7'-0"						EXISTING DOOR - V.O.J.	*	*	*	*	*		*	*	*		E466C
E466E	NZ	6'-0"	7'-0"						EXISTING DOUBLE EGRESS DOOR W/ NEW ELECTRONIC UNLOCK RELEASE DEVICE	*	*	*	*	*		*	*	*		E466E
E474B		4'-0"	7'-0"						EXISTING DOOR - V.O.J.	*	*	*	*	*		*	*	*		E474B
E476		3'-0"	7'-0"						EXISTING FIRE RATED DOOR - V.O.J.	*	*	*	*	*		*	*	*		E476
E477B		5'-4"	7'-0"						EXISTING ELECTRICAL ROOM DOOR - V.O.J.	*	*	*	*	*		*	*	*		E477B
E478B		4'-0"	7'-0"						EXISTING DOOR - V.O.J.	*	*	*	*	*		*	*	*		E478B
E478F		3'-0"	7'-0"						EXISTING DOOR - V.O.J.	*	*	*	*	*		*	*	*		E478F
E478G		3'-0"	7'-0"						EXISTING DOOR - V.O.J.	*	*	*	*	*		*	*	*		E478G
E478H		3'-0"	7'-0"						EXISTING DOOR - V.O.J.	*	*	*	*	*		*	*	*		E478H
E478J		3'-0"	7'-0"						EXISTING DOOR - V.O.J.	*	*	*	*	*		*	*	*		E478J
E478K		3'-0"	7'-0"						EXISTING DOOR - V.O.J.	*	*	*	*	*		*	*	*		E478K
E478M		3'-0"	7'-0"						EXISTING DOOR - V.O.J.	*	*	*	*	*		*	*	*		E478M
E478N		6'-0"	7'-0"						EXISTING DOUBLE EGRESS DOOR W/ NEW ELECTRONIC UNLOCK RELEASE DEVICE	*	*	*	*	*		*	*	*		E478N
E481A		7'-7"	7'-0"						EXISTING DOUBLE DOOR W/NEW MAGNET HOLDER	*	*	*	*	*		*	*	*		E481A
E481B		6'-0"	7'-0"						EXISTING DOOR - V.O.J.	*	*	*	*	*		*	*	*		E481B
E481C		2'-8"	7'-0"						EXISTING DOOR - V.O.J.	*	*	*	*	*		*	*	*		E481C
E481D		7'-4"	7'-0"						EXISTING DOOR - V.O.J.	*	*	*	*	*		*	*	*		E481D
E481E		4'-0"	7'-0"						EXISTING DOOR - V.O.J.	*	*	*	*	*		*	*	*		E481E
E481F		2'-8"	7'-0"						EXISTING DOOR - V.O.J.	*	*	*	*	*		*	*	*		E481F
E482C		6'-0"	7'-0"						EXISTING DOOR - V.O.J.	*	*	*	*	*		*	*	*		E482C
E482D		6'-0"	7'-0"						EXISTING DOOR - V.O.J.	*	*	*	*	*		*	*	*		E482D
E482E		6'-0"	7'-0"						EXISTING DOOR - V.O.J.	*	*	*	*	*		*	*	*		E482E
E482F		5'-4"	7'-0"						EXISTING DOOR - V.O.J.	*	*	*	*	*		*	*	*		E482F
E482G		5'-4"	7'-0"						EXISTING DOOR - V.O.J.	*	*	*	*	*		*	*	*		E482G
E482H		3'-0"	7'-0"						EXISTING DOOR - V.O.J.	*	*	*	*	*		*	*	*		E482H
E484		3'-0"	7'-0"						EXISTING FIRE RATED DOOR - V.O.J.	*	*	*	*	*		*	*	*		E484
E501		3'-0"	7'-0"						EXISTING ALUMINUM DOOR - V.O.J./CARD ACCESS REQ., RE: SPECS	*	*	*	*	*		*	*	*		E501
E502		3'-0"	7'-0"						EXISTING DOOR - V.O.J.	*	*	*	*	*		*	*	*		E502
E504		3'-0"	7'-0"						EXISTING DOOR - V.O.J.	*	*	*	*	*		*	*	*		E504

***LDH TB Clinic -
Baton Rouge***



DWG #: REV 2	Drawing By: Joshua Williams	Engineering By: Joshua Williams	LDH TB Clinic - Baton Rouge THIS DRAWING IS NOT TO BE USED FOR CONSTRUCTION PURPOSES UNLESS OTHERWISE AUTHORIZED.	NO.	DATE	REVISIONS	BY:	Performance Medical Group Planning Department 103 Deertree Dr. Lafayette, La 70507 Tel. (337)237-1924 Fax (337)232-9143
Sheet: 1 / 8	Date: 03/28/2025	Scale: 1/4" = 1'						
IN ORDER TO AVOID DELAY DURING INSTALLATION, THE FINALIZED ARCHITECT'S DRAWING SHOULD BE SUBMITTED TO PERFORMANCE MEDICAL GROUP FOR APPROVAL.				Authorized By:				

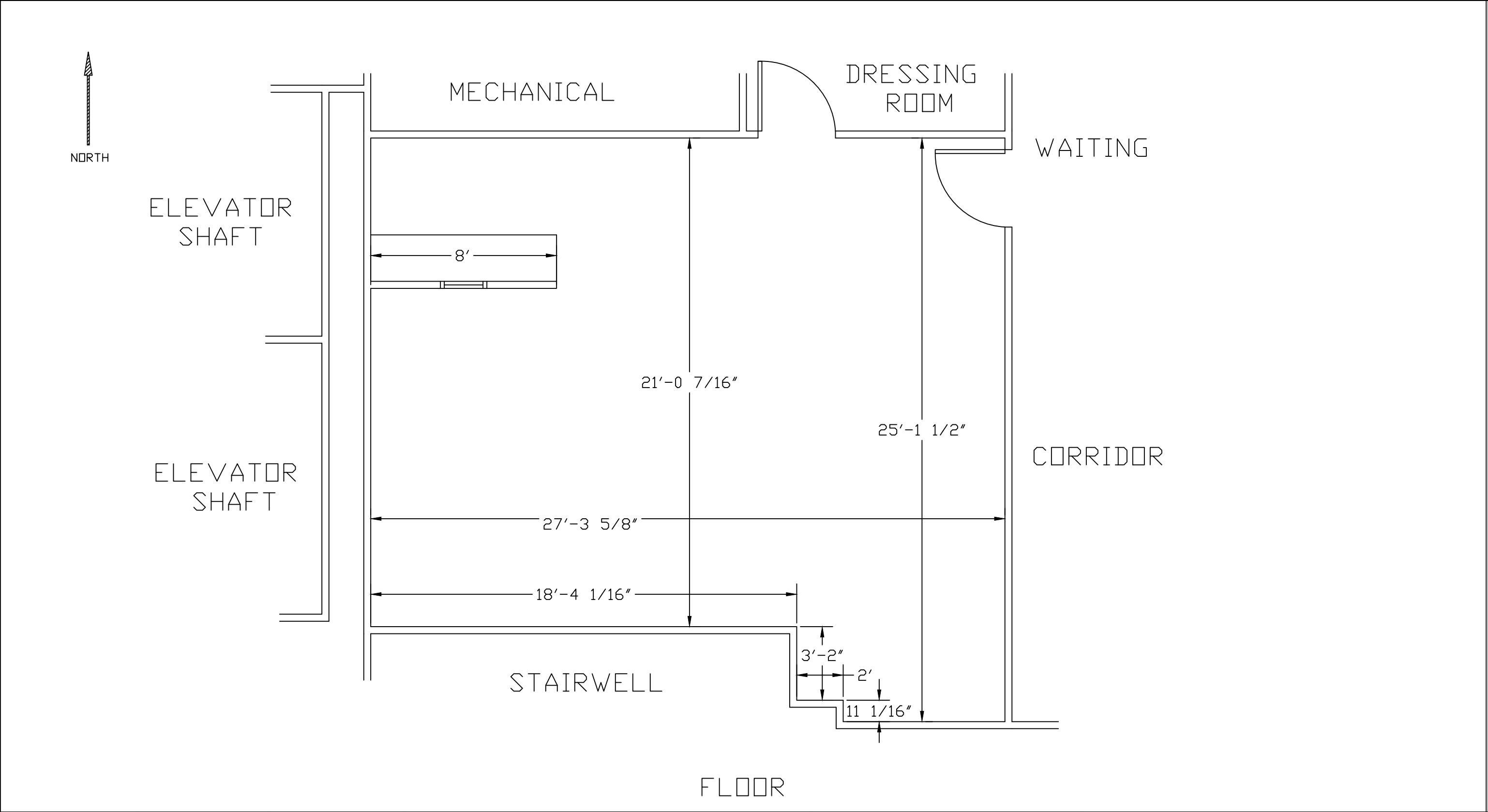
IMAGING EQUIPMENT PLANS AND DETAILS

GENERAL NOTES AND SPECIFICATIONS

1. ALL DRAWINGS ARE FROM "FINISHED SURFACE".
2. THE LOCATION FOR CABLE ENTRANCE INTO THE X-RAY TABLE IS CRITICAL. ANY DEVIATION FROM THAT INDICATED FOR THE TABLE FLOOR BOX OR RACEWAY MUST HAVE AN APPROVAL OF PERFORMANCE MEDICAL GROUP (THE LOCATION OF ALL OF THE EQUIPMENT IN THE X-RAY ROOM & RELATED DIRECTLY TO THIS ENTRANCE LOCATION).
3. ONLY SERVICES SPECIFIED BY THE X-RAY EQUIPMENT MANUFACTURER ARE TO BE LOCATED IN, OR ON, THE WALL BEHIND X-RAY CONTROLS, TRANSFORMERS, RACK CABINETS, ETC. WHEN INSTALLED, THESE COMPONENTS FIT AGAINST THE WALL, AND DO NOT ALLOW ACCESS TO THE WALL. IN ELEVATION VIEWS, THE OUTLINE OF THESE IS SHOWN BY LINEWEIGHT LINES. ANY ADDITIONAL ELEVATIONS SHOWING THIS "COMMITTED" WALL SPACE WILL BE SUPPLIED ON REQUEST.
4. IN THE X-RAY ROOMS PROJECTIONS BELOW THE FINISHED CEILING MUST NOT EXCEED 1/2" EXCEPT FOR THE SPECIFIED UNISTRUT AND TUBESTAND CEILING RAILS.
5. COORDINATION IN LOCATION OF RECESSED LIGHTING FIXTURES IN X-RAY ROOMS IS ESSENTIAL TO ENSURE THAT THERE IS NO CONFLICT BETWEEN FIXTURES AND X-RAY TUBESTAND CEILING RAILS.
6. THE CEILING HEIGHT FOR EACH X-RAY ROOM WILL BE INDICATED ON THE PLAN VIEW OF THAT ROOM.
7. ALL ELECTRICAL WORK CONTAINED IN THIS INSTALLATION SHALL BE PERFORMED IN STRICT COMPLIANCE WITH THE NATIONAL ELECTRICAL CODE OR LOCAL CODES, WHICHEVER IS MORE STRINGENT.
8. THE ELECTRICAL CONTRACTOR SHALL PROVIDE ALL NECESSARY FITTINGS, BUSHINGS, AND OTHER ITEMS THAT MAY BE REQUIRED AT ALL CABLE OUTLETS AND JUNCTION BOXES TO PERMIT PROPER CONNECTION TO THE EQUIPMENT TO BE INSTALLED.
9. ALL RACEWAYS ARE TO HAVE REMOVEABLE COVERS FOR THE ENTIRE LENGTH OF THE RACEWAY.

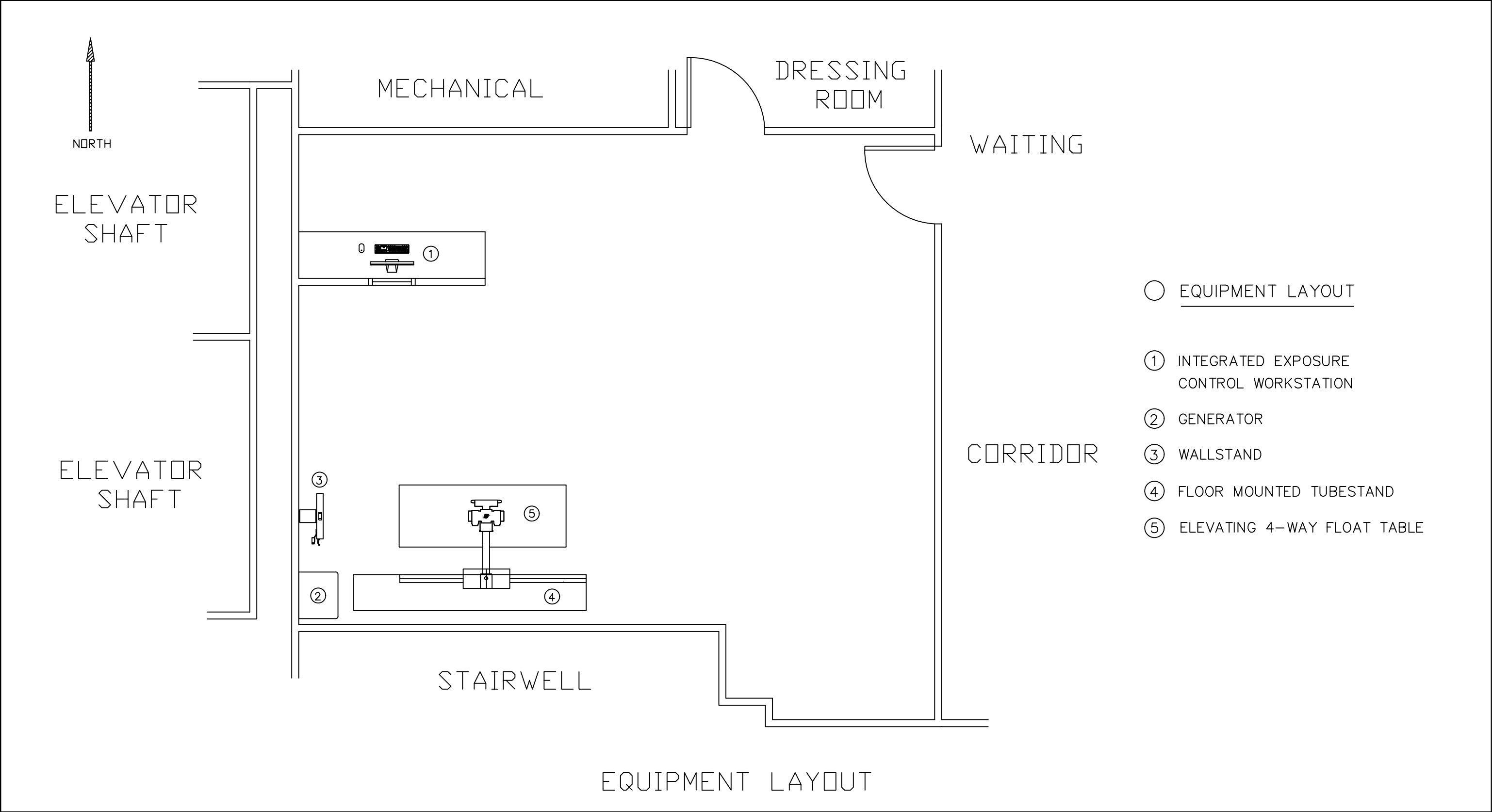
10. ALL CONDUIT SIZES AND BENDS ARE TO BE MADE ACCORDING TO THE NATIONAL ELECTRICAL CODE, TABLE 346-10, FOR THE CONDUCTOR WITHOUT LEAD SHEATH. NO RIGHT-ANGLE DEVICES OTHER THAN STANDARD CONDUIT ELBOWS ARE TO BE USED. EXAMPLE 8-2" DIAMETER CONDUIT SHALL HAVE NO LESS THAN 12" RADIUS TO BE INSIDE EDGE OF SWEEP FROM ALL CENTER POINT.
11. CONDUITS SHOWN ON THESE DRAWINGS ARE INDICATED SCHEMATICALLY, AND ARE NOT TO BE USED FOR ACUTAL RUNS. CONTRACTOR TO DETERMINE SHORTEST RUN AVAILABLE PRIOR TO INSTALLATION.
12. THE METRIC SIZED WIRES AND CABLES INSTALLED IN THIS INSTALLATION BY THE CUSTOMER'S CONTRACTOR SHALL BE MULTI-CONDUCTOR, STRANDED, EXTRA-FLEXIBLE, RUBBER OR THERMOPLASTIC COVERED TYPE, 600 VOLT RATING, OR ITS EQUIVALENT, WITH EACH CONDUCTOR NUMBERED FOR ITS ENTIRE LENGTH. "FREE ENDS" AT EACH END AS SPECIFIED ON THE ATTACHED PLANS.
13. ALL CONDUITS, RACEWAYS, AND JUNCTION BOXES ARE TO BE RECESSED, IF POSSIBLE, IT IS PREFERRED THAT RACEWAYS AND JUNCTION BOXES SHOULD BE SET FLUSH WITH THE FINISHED SURFACES. IF INSTALLATION WILL NOT CONFORM WITH THE PLANS SUBMITTED, PERFORMANCE MEDICAL GROUP MUST BE CONTACTED BEFORE ANY DESIGN CHANGES ARE MADE.
14. PROVIDE NEUTRAL AND GROUND WIRES TO ALL X-RAY GENERATORS WHERE 480 VOLTS, THREE PHASE SERVICE IS SPECIFIED. (480 VOLT TRANSFORMER SECONDARY SHOULD BE "WYE" CONNECTED AND THREE PHASE WIRES PLUS THE NEUTRAL AND GROUND BROUGHT TO EACH SPECIFIED X-RAY ROOM).
15. THE CUSTOMER/CONTRACTOR SHALL FIELD VERIFY ALL EXISTING AND PROPOSED DIMENSIONS AND SITE CONDITIONS PRIOR TO COMMENCING CONSTRUCTION.
16. PMG SHALL BE NOTIFIED IN WRITING OF ANY FIELD CONDITIONS ENCOUNTERED THAT ARE CONTRADICTORY TO THOSE SHOWN IN THE SITE PLANS.
17. ALL WIRING INCLUDING THE WIRING OF THE LAN OR WAN, CABLES, ETC. IS THE RESPONSIBILITY OF THE BUYER. ALL THE EQUIPMENT RELATED TO THE NETWORK DEPLOYMENT, SUCH AS ROUTERS, SWITCHES, HUBS, FIREWALLS, ETC. IS THE RESPONSIBILITY OF THE BUYER, UNLESS SPECIFICALLY LISTED.

DWG #: REV 2	Drawing By: Joshua Williams	Engineering By: Joshua Williams	Title: LDH TB Clinic - Baton Rouge	NO.	DATE	REVISIONS	BY:	Performance Medical Group
Sheet: 2 / 8	Date: 03/28/2025	Scale: 1/4" = 1'						
IN ORDER TO AVOID DELAY DURING INSTALLATION, THE FINALIZED ARCHITECT'S DRAWING SHOULD BE SUBMITTED TO PERFORMANCE MEDICAL GROUP FOR APPROVAL.			THIS DRAWING IS NOT TO BE USED FOR CONSTRUCTION PURPOSES UNLESS OTHERWISE AUTHORIZED.	Authorized By:			Planning Department	
								103 Deertree Dr. Lafayette, La 70507 Tel. (337)237-1924 Fax (337)232-9143

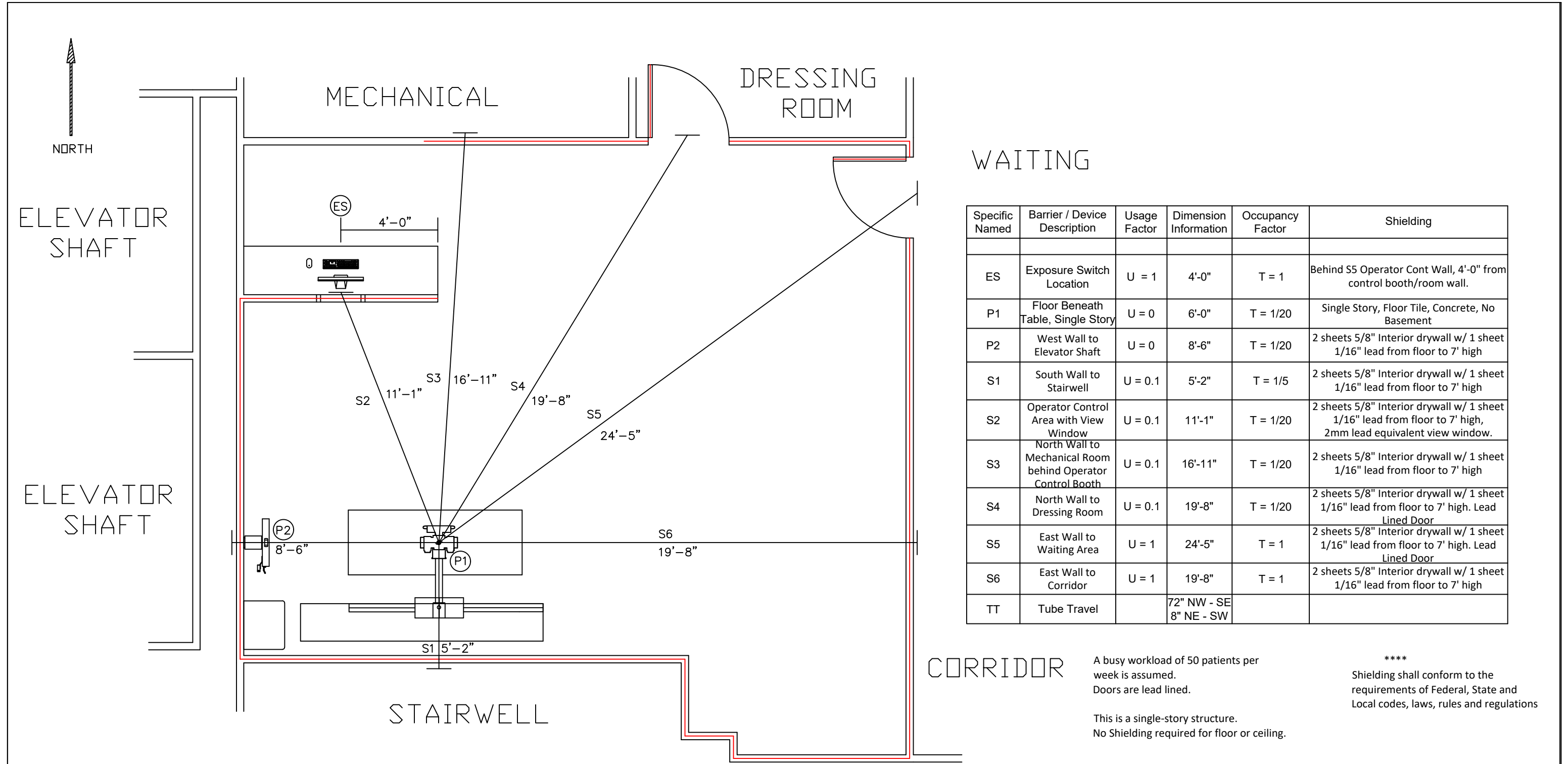


DWG #: REV 2	Drawing By: <i>Joshua Williams</i>	Engineering By: <i>Joshua Williams</i>	Title: <i>LDH TB Clinic - Baton Rouge</i>	NO.	DATE	REVISIONS	BY:	<i>Performance Medical Group</i> Planning Department 103 Deertree Dr. Lafayette, La 70507 Tel. (337)237-1924 Fax (337)232-9143
Sheet: 3	Date: 03/28/2025	Scale: 1/4" = 1'	THIS DRAWING IS NOT TO BE USED FOR CONSTRUCTION PURPOSES UNLESS OTHERWISE AUTHORIZED.					
8								

IN ORDER TO AVOID DELAY DURING INSTALLATION, THE FINALIZED ARCHITECT'S DRAWING SHOULD BE SUBMITTED TO **PERFORMANCE MEDICAL GROUP** FOR APPROVAL.



DWG #: REV 2	Drawing By: Joshua Williams	Engineering By: Joshua Williams	Title: LDH TB Clinic - Baton Rouge	NO. DATE REVISIONS BY:				Performance Medical Group
Sheet: 4 / 8	Date: 03/28/2025	Scale: 1/4" = 1'						
	THIS DRAWING IS NOT TO BE USED FOR CONSTRUCTION PURPOSES UNLESS OTHERWISE AUTHORIZED.			Authorized By:				
IN ORDER TO AVOID DELAY DURING INSTALLATION, THE FINALIZED ARCHITECT'S DRAWING SHOULD BE SUBMITTED TO PERFORMANCE MEDICAL GROUP FOR APPROVAL.							Planning Department 103 Deertree Dr. Lafayette, La 70507 Tel. (337)237-1924 Fax (337)232-9143	



Specific Named	Barrier / Device Description	Usage Factor	Dimension Information	Occupancy Factor	Shielding
ES	Exposure Switch Location	U = 1	4'-0"	T = 1	Behind S5 Operator Cont Wall, 4'-0" from control booth/room wall.
P1	Floor Beneath Table, Single Story	U = 0	6'-0"	T = 1/20	Single Story, Floor Tile, Concrete, No Basement
P2	West Wall to Elevator Shaft	U = 0	8'-6"	T = 1/20	2 sheets 5/8" Interior drywall w/ 1 sheet 1/16" lead from floor to 7' high
S1	South Wall to Stairwell	U = 0.1	5'-2"	T = 1/5	2 sheets 5/8" Interior drywall w/ 1 sheet 1/16" lead from floor to 7' high
S2	Operator Control Area with View Window	U = 0.1	11'-1"	T = 1/20	2 sheets 5/8" Interior drywall w/ 1 sheet 1/16" lead from floor to 7' high, 2mm lead equivalent view window.
S3	North Wall to Mechanical Room behind Operator Control Booth	U = 0.1	16'-11"	T = 1/20	2 sheets 5/8" Interior drywall w/ 1 sheet 1/16" lead from floor to 7' high
S4	North Wall to Dressing Room	U = 0.1	19'-8"	T = 1/20	2 sheets 5/8" Interior drywall w/ 1 sheet 1/16" lead from floor to 7' high. Lead Lined Door
S5	East Wall to Waiting Area	U = 1	24'-5"	T = 1	2 sheets 5/8" Interior drywall w/ 1 sheet 1/16" lead from floor to 7' high. Lead Lined Door
S6	East Wall to Corridor	U = 1	19'-8"	T = 1	2 sheets 5/8" Interior drywall w/ 1 sheet 1/16" lead from floor to 7' high
TT	Tube Travel		72" NW - SE 8" NE - SW		

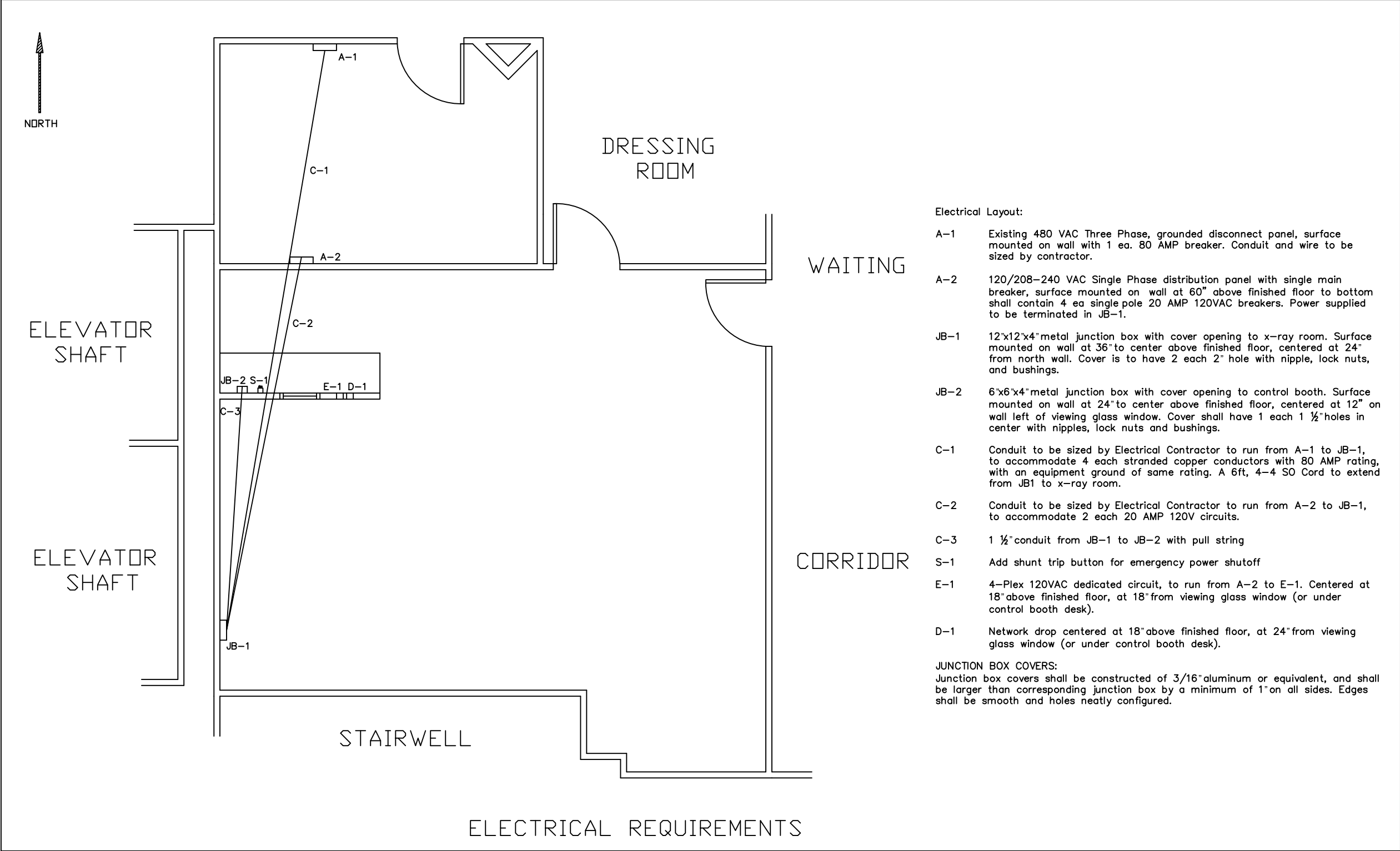
A busy workload of 50 patients per week is assumed.
Doors are lead lined.

This is a single-story structure.
No Shielding required for floor or ceiling.

Shielding shall conform to the requirements of Federal, State and Local codes, laws, rules and regulations

LA DEQ SHIELDING REVIEW DATA

DWG #: REV 2	Drawing By: Joshua Williams	Engineering By: Joshua Williams	Title: LDH TB Clinic - Baton Rouge	NO. DATE REVISIONS BY:				Performance Medical Group
Sheet: 6 8	Date: 03/28/2025	Scale: 1/4" = 1'						
	THIS DRAWING IS NOT TO BE USED FOR CONSTRUCTION PURPOSES UNLESS OTHERWISE AUTHORIZED.			Authorized By:				
IN ORDER TO AVOID DELAY DURING INSTALLATION, THE FINALIZED ARCHITECT'S DRAWING SHOULD BE SUBMITTED TO PERFORMANCE MEDICAL GROUP FOR APPROVAL.			Planning Department 103 Deertree Dr. Lafayette, La 70507 Tel. (337)237-1924 Fax (337)232-9143					

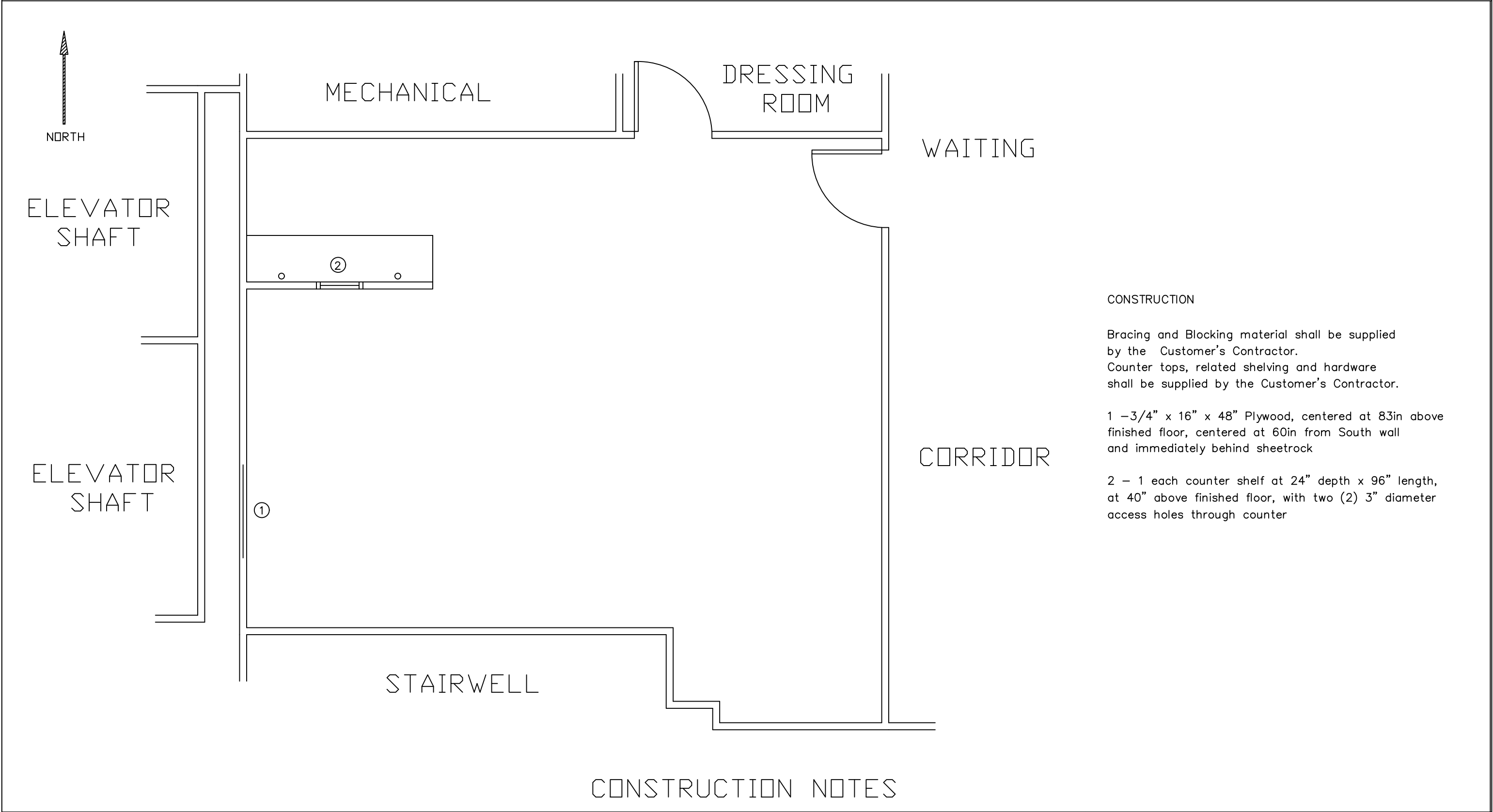


Electrical Layout:

- A-1 Existing 480 VAC Three Phase, grounded disconnect panel, surface mounted on wall with 1 ea. 80 AMP breaker. Conduit and wire to be sized by contractor.
- A-2 120/208-240 VAC Single Phase distribution panel with single main breaker, surface mounted on wall at 60" above finished floor to bottom shall contain 4 ea single pole 20 AMP 120VAC breakers. Power supplied to be terminated in JB-1.
- JB-1 12"x12"x4" metal junction box with cover opening to x-ray room. Surface mounted on wall at 36" to center above finished floor, centered at 24" from north wall. Cover is to have 2 each 2" hole with nipple, lock nuts, and bushings.
- JB-2 6"x6"x4" metal junction box with cover opening to control booth. Surface mounted on wall at 24" to center above finished floor, centered at 12" on wall left of viewing glass window. Cover shall have 1 each 1 1/2" holes in center with nipples, lock nuts and bushings.
- C-1 Conduit to be sized by Electrical Contractor to run from A-1 to JB-1, to accommodate 4 each stranded copper conductors with 80 AMP rating, with an equipment ground of same rating. A 6ft, 4-4 SO Cord to extend from JB1 to x-ray room.
- C-2 Conduit to be sized by Electrical Contractor to run from A-2 to JB-1, to accommodate 2 each 20 AMP 120V circuits.
- C-3 1 1/2" conduit from JB-1 to JB-2 with pull string
- S-1 Add shunt trip button for emergency power shutoff
- E-1 4-Plex 120VAC dedicated circuit, to run from A-2 to E-1. Centered at 18" above finished floor, at 18" from viewing glass window (or under control booth desk).
- D-1 Network drop centered at 18" above finished floor, at 24" from viewing glass window (or under control booth desk).

JUNCTION BOX COVERS:
Junction box covers shall be constructed of 3/16" aluminum or equivalent, and shall be larger than corresponding junction box by a minimum of 1" on all sides. Edges shall be smooth and holes neatly configured.

DWG #: REV 2	Drawing By: Joshua Williams	Engineering By: Joshua Williams	Title: LDH TB Clinic - Baton Rouge	NO. DATE REVISIONS BY:				Performance Medical Group
Sheet: 7 / 8	Date: 03/28/2025	Scale: 1/4" = 1'						
	THIS DRAWING IS NOT TO BE USED FOR CONSTRUCTION PURPOSES UNLESS OTHERWISE AUTHORIZED.							
IN ORDER TO AVOID DELAY DURING INSTALLATION, THE FINALIZED ARCHITECT'S DRAWING SHOULD BE SUBMITTED TO PERFORMANCE MEDICAL GROUP FOR APPROVAL.				Authorized By:			Planning Department 103 Deertree Dr. Lafayette, La 70507 Tel. (337)237-1924 Fax (337)232-9143	



CONSTRUCTION

Bracing and Blocking material shall be supplied by the Customer's Contractor.
Counter tops, related shelving and hardware shall be supplied by the Customer's Contractor.

1 – 3/4" x 16" x 48" Plywood, centered at 83in above finished floor, centered at 60in from South wall and immediately behind sheetrock

2 – 1 each counter shelf at 24" depth x 96" length, at 40" above finished floor, with two (2) 3" diameter access holes through counter

DWG #: REV 2	Drawing By: Joshua Williams	Engineering By: Joshua Williams	Title: LDH TB Clinic - Baton Rouge	NO. DATE REVISIONS BY:				Performance Medical Group
Sheet: 8 / 8	Date: 03/28/2025	Scale: 1/4" = 1'						
	THIS DRAWING IS NOT TO BE USED FOR CONSTRUCTION PURPOSES UNLESS OTHERWISE AUTHORIZED.			Authorized By:				
IN ORDER TO AVOID DELAY DURING INSTALLATION, THE FINALIZED ARCHITECT'S DRAWING SHOULD BE SUBMITTED TO PERFORMANCE MEDICAL GROUP FOR APPROVAL.			Planning Department 103 Deertree Dr. Lafayette, La 70507 Tel. (337)237-1924 Fax (337)232-9143					