



ST. TAMMANY PARISH

MICHAEL B. COOPER
PARISH PRESIDENT

August 22, 2024

Please find the following addendum to the below mentioned BID.

Addendum No.: 1

Bid#: 24-39-2

Project Name: Meadow Lake New Storage Tank

Bid Due Date: September 18, 2024

Receipt of this addendum shall be acknowledged by inserting its number and date in the space provided on the Proposal.

Bidders shall hold a Municipal and Public works, OR, a Building Construction Louisiana Contractor's License.

Davis – Bacon Act is NOT applicable to this project.

GENERAL INFORMATION:

1. A Non-Mandatory Pre-Bid Meeting will be conducted on Thursday, August 29, 2024. Time and Location are listed on the Notice to Bidders and attendance is strongly encouraged.
2. Permits
 - a. Contractor shall be required to apply for, meet all requirements and obtain all required permits. Permit information is included in Section 03, Para.V .
 - b. St. Tammany Parish Permit information is as follows:
 - i. Two permits are required, one sitework permit and one building permit. The Department of Utilities will prepare the permit application, and the Contractor will submit the permit application to the Parish. All fees will be paid by the Contractor.
 - ii. Contractor must register with St. Tammany Parish.
 - iii. Traffic and Drainage Impact Fees shall not apply.
 - iv. Permit fee schedule is available at <http://www.stpgov.org/departments/permits-and-inspections>
 - v. Other fees and costs shall be paid by Contractor



ST. TAMMANY PARISH

MICHAEL B. COOPER
PARISH PRESIDENT

- c. LDH authorization has been obtained by Owner.
- d. Tammany Parish Dept. of Environmental Services Letter of No Objection will be obtained by Owner. (includes Engineering and Planning Dept. reviews).

DRAWINGS:

1. Drawing Sheet 14:
 - a. **Replace** Drawing Sheet 14- "Meadow Lake Process Schematic and Schedules" with Drawing Sheet 14 - "Meadow Lake Process Schematic and Schedules - Addendum No. 1".

QUESTIONS AND ANSWERS

1. Question: Would a stainless-steel tank be accepted as an equal for this project?

Answer: The request for prior approval for a stainless-steel tank is not pre-approved. However, the product can be submitted for approval during the submittal phase of construction providing the information meets the project specifications. Adequate details will be required in order to properly evaluate the product.

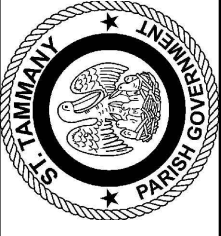
2. Question: The project classification is: Municipal & Public Work Construction however, the scope of work can also have the classification of Building Construction. Will Building Construction license classification be added on the bid document?

Answer: Bidders shall hold a Municipal and Public Works, OR, a Building Construction Louisiana Contractor's License.

ATTACHMENTS:

Plan Sheet 14 - "Meadow Lake Process and Schedules - Addendum No.: 1".

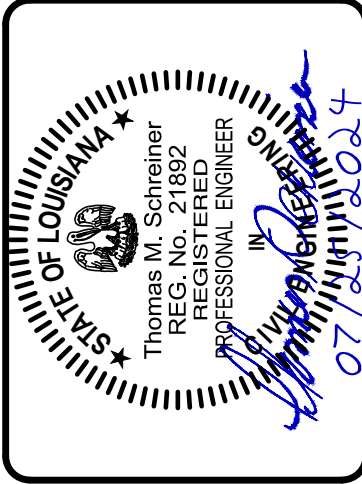
<< End of Addendum 1 >>



DEPT. OF UTILITIES
TAMMANY PARISH
GOVERNMENT
620 N. TYLER STREET
COVINGTON, LA 70433

| | |
|--------------------------------|----------------|
| DATE: | 8/22/24 |
| DESCRIPTION OF REVISION | 1 NOMENCLATURE |
| CLARIFICATION OF CONTROL PANEL | |

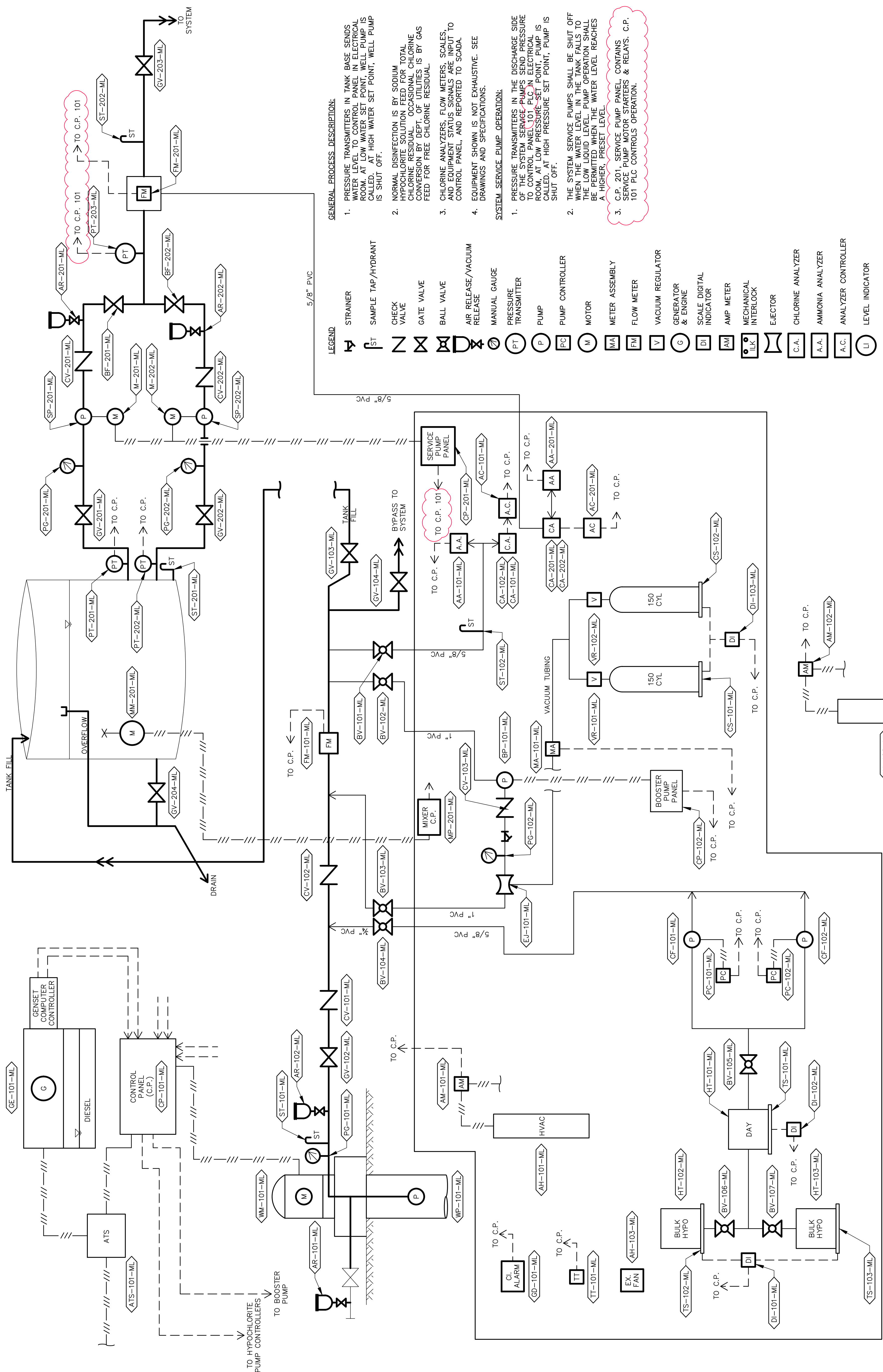
| | |
|---------------|---------------|
| DESIGNED BY: | ACM |
| DRAWN BY: | LMR |
| CHECKED BY: | TMS |
| SUBMITTED BY: | PRINCIPAL ENG |
| PROJECT No.: | TU23000159 |
| ISSUE DATE: | JULY 2024 |
| APPROVED BY: | |
| SHEET SIZE: | ANSI D |
| SCALE: | |



MEADOW LAKE
NEW STORAGE TANK
SLIDELL, LOUISIANA
PROJECT No.: TU23000159
MEADOW LAKE PROCESS
SCHEMATIC AND SCHEDULES

SHEET NO.
14
SHEET 14 OF 27

ADDENDUM 1



GENERAL PROCESS DESCRIPTION:

- PRESSURE TRANSMITTERS IN TANK BASE SENDS WATER LEVEL TO CONTROL PANEL IN ELECTRICAL ROOM. AT LOW WATER SET POINT, WELL PUMPS CALLED. AT HIGH WATER SET POINT, WELL PUMP IS SHUT OFF.
 - NORMAL DISINFECTION IS BY SODIUM HYPOCHLORITE SOLUTION FEED FOR TOTAL CHLORINE RESIDUAL. OCCASIONAL CHLORINE CONVERSION BY DEPT. OF UTILITIES IS BY GAS FEED FOR FREE CHLORINE RESIDUAL.
 - CHLORINE ANALYZERS, FLOW METERS, SCALES, AND EQUIPMENT STATUS SIGNALS ARE INPUT TO CONTROL PANEL, AND REPORTED TO SCADA.
 - EQUIPMENT SHOWN IS NOT EXHAUSTIVE. SEE DRAWINGS AND SPECIFICATIONS.
- SYSTEM SERVICE PUMP OPERATION:**
- PRESSURE TRANSMITTERS IN THE DISCHARGE SIDE OF THE SYSTEM SERVICE PUMPS SEND PRESSURE TO CONTROL PANEL. PLC IN ELECTRICAL ROOM, AT LOW PRESSURE SET POINT, PUMP IS CALLED. AT HIGH PRESSURE SET POINT, PUMP IS SHUT OFF.
 - THE SYSTEM SERVICE PUMPS SHALL BE SHUT OFF WHEN THE WATER LEVEL IN THE TANK FALLS TO THE LOW LIQUID LEVEL. PUMP OPERATION SHALL BE PERMITTED WHEN THE WATER LEVEL REACHES A HIGHER, PRESET LEVEL.
 - C.P. 201, SERVICE PUMP PANEL CONTAINS SERVICE PUMP MOTOR STARTERS & RELAYS. C.P. 101 PLC CONTROLS OPERATION.

LEGEND

- STRAINER
- SAMPLE TAP/HYDRANT
- CHECK VALVE
- GATE VALVE
- BALL VALVE
- AIR RELEASE/VACUUM RELEASE
- MANUAL GAUGE
- PRESSURE TRANSMITTER
- PUMP
- PUMP CONTROLLER
- MOTOR
- METER ASSEMBLY
- FLOW METER
- VACUUM REGULATOR
- GENERATOR & ENGINE
- SCALE DIGITAL INDICATOR
- AMP METER
- MECHANICAL INTERLOCK
- EJECTOR
- CHLORINE ANALYZER
- AMMONIA ANALYZER
- ANALYZER CONTROLLER
- LEVEL INDICATOR
- CONTROL CONNECTION
- POWER CONNECTION
- CARRIER PIPE

