

**Wheelchair Accessible Prisoner Transport (Handicap Van)****Chassis Specifications:**

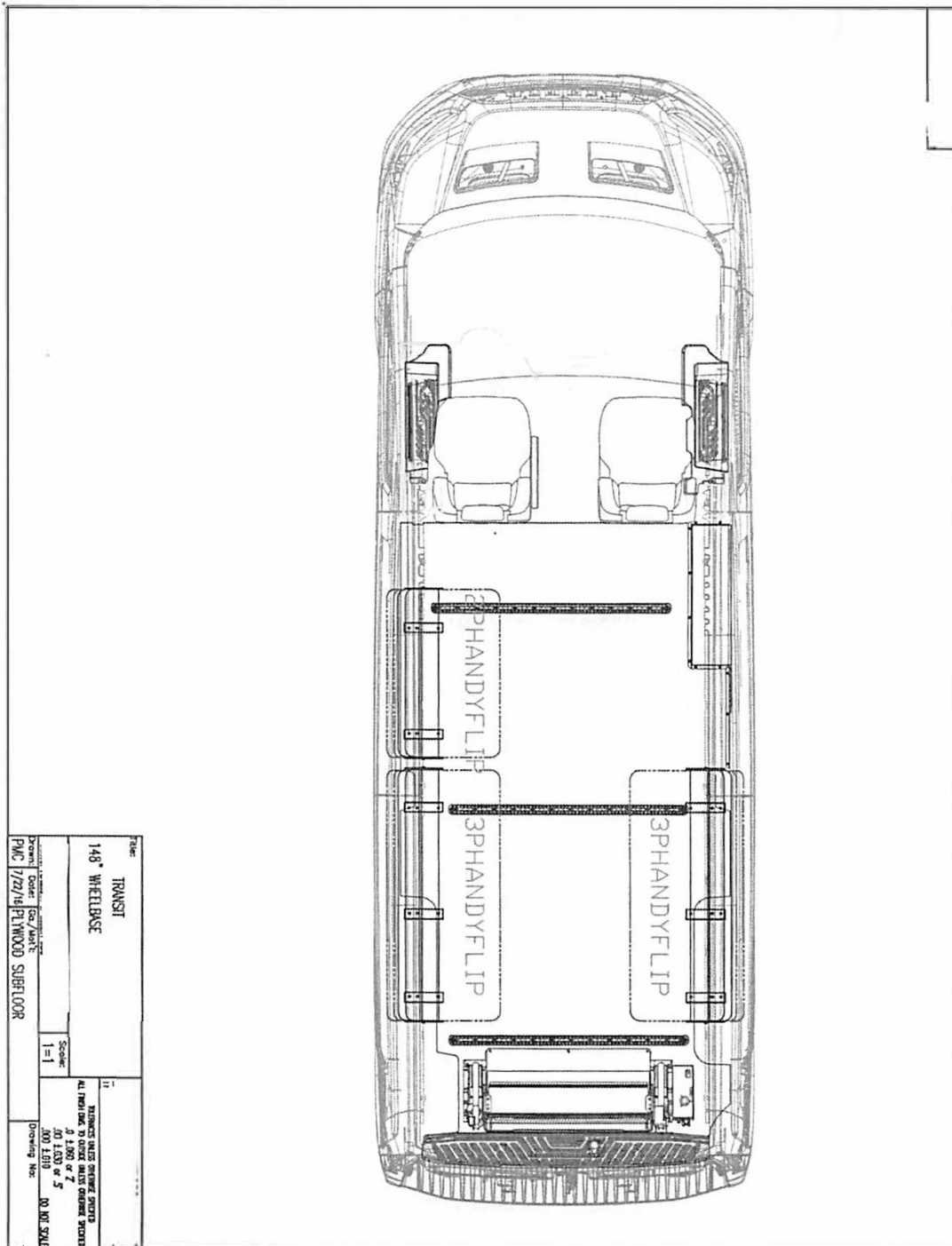
- \*12 Passenger Transit Windowless Cargo Van with Mid Height Roof
- \*Minimum 148" Wheelbase
- \*OEM All-Wheel Drive
- \*Minimum 3.5L PFDi V6 Engine with Automatic Transmission
- \*Twin Independent Variable Camshaft Timing (Ti-VCT)
- \*Stationary Idle Control (SEIC) capability
- \*White exterior color with grey interior
- \*Standard model trim level and black bumpers
- \*GVWR: Approx. 9,500 lbs. / HT: Approx. 99.2"
- \*6 Speed Auto overdrive with Select Shift
- \*3.73 regular axle ratio – standard with 50 state emission label
- \*OEM interior walls and headliner
- \*Tires: Five (5) LT235/65Rx16E all season steel belted radials, black wall with silver wheel covers
- \*Instrumentation: Speedometer, Odometer, Oil Pressure, Water Temperature and Alternator Gauges, and Tire Pressure Monitoring System
- \*Heavy Duty Service Package: Transmission Cooler, 220 AMP alternator, Heavy Duty Springs and gas shock absorbers
- \*Dual Vinyl Bucket Seats with Driver Side and Passenger Side Airbags
- \*Side Airbags and Safety Canopy Curtain Airbags
- \*OEM Front/Rear Air Conditioning and Heat
- \*AM/FM Stereo with Audio Input Jack, four (4) speakers in front and two (2) speakers in rear
- \*Four (4) wheel anti-lock brake system and power steering with tilt steering column
- \*Rearview Camera with Trailer Hitch Assist
- \*OEM twenty-five (25) Gallon Capacity Fuel Tank Located under the Vehicle
- \*AdvanceTrac or equal to with Roll Stability Control (RSC)
- \*Dual Heavy Duty Batteries

**2024 Ford T-350 Mid Roof XL 12 Passenger Van or equal to**

## Dixon Correctional Institute

**To Include the Following Conversions and Adaptive Equipment (Wheelchair Accessible Prisoner Transport Package):**

- \*Long Wheel Base (LWB) 3/4" plywood subfloor with steel floor reinforcement
- \*Three (3) rows of "L-Track" tie down system applied to 3/4" commercial grade plywood subfloor
- \*Altro or equal to non-slip floor covering in black or grey – LWB Cargo
- \*Upgrade to Bodyguard or equal to van liner interior kit with recessed 3-way colored ceiling and wall lights in place of standard cargo conversion walls
- \*Long wheelbase ABS plastic interior with six (6) LED dome lights – mid roof
- \*Prisoner transport partition mounted on B pillar to segregate driver and co-pilot from rear
- \*Upgraded prisoner transport ceiling mount A/C and heat unit for medium roof with vent covers  
Minimum 26,000 BTU heat, minimum 28,000 BTU A/C
- \*Braun Century II Series Model C919 FIB or equal to automatic ADA lift with interlock  
Lift to be a minimum 34" X 51" platform X 800 lbs, rear door mounted, to have spotlights on lift, to be FMVSS 403 & 404 compliant, to have manual roll stop
- \*Full length wall mounted "L-Track" tie down system for shoulder belts on driver and passenger side (required with tie downs)
- \*One (1) set of AMF Bruns or equal to wheelchair securement system with retractable lap/shoulder belts (LEVEL 3)
- \*Two (2) - three passenger side mounted foldaway seats with lap belts (Freedman Seating or equal to)
- \*One (1) - two passenger side mounted foldaway seat with lap belts (Freedman Seating or equal to)
- \*Stanchion pole mounted at B pillar for ambulatory access assistance (side cargo door)
- \*To include a safety kit with a minimum 5 lb. fire extinguisher, a sixteen (16) unit first aid kit, and a triangle reflective safety kit
- \*Driver short side and full passenger expanded metal steel with 7" step surface
- \*Backup alarm
- \*Replace OEM lower exterior trim with step toe plate
- \*To include payload, required certifications/labels, training CDs, emergency exit & no smoking stickers
- \*Prison transport front prison bulkhead



Model	TRANSIT
Wheelbase	148" WHEELBASE
Scale	1" = 1'
Notes	1. WINDSHIELD WIPER BRUSHES ALL OTHERS TO ORDER MATCH ORIGINAL STOCK 2. 1.900 or 2" 3. 1.100 or 5" 4. 100 TUBS 5. 100 NOT SWAL
Drawing No.	
Author	PMC
Checker	1/22/18 PLYWOOD SUPERLOOR