



**PURCHASING DEPARTMENT**

**April 6, 2024**

**Addendum #2**

**IFB 50018-240033**

**Carver Hall Biology Lab 185**

**ITM 1:** Fume hood will be tested by asbestos by GSU. If found GSU will be responsible for removal.

**ITM 2:** Conduit the electrical power.

**ITM 3:** Fill hole in the floor.

**ITM 4:** Lightening and water Heater specs attached.

Erin Walker  
Acting Purchasing Director  
Grambling State University

**NOTE: PLEASE SIGN AND DATE AND RETURN WITH BID:**

**SIGN** \_\_\_\_\_ **DATE** \_\_\_\_\_

## FEATURES & SPECIFICATIONS

**INTENDED USE** — Built on the compact, low-profile Z strip channel, this LED strip offers long maintenance-free life, several color temperatures, lumen outputs and lengths. Ideal for new construction and retrofit applications in T5 and T8 lengths. Ideal for uplight and downlight in commercial, retail, manufacturing, warehouse, cove and display applications. **Certain airborne contaminants can diminish the integrity of acrylic and/or polycarbonate.** [Click here for Acrylic-Polycarbonate Compatibility table for suitable uses.](#)

**CONSTRUCTION** — Compact-design channel and cover are formed from code-gauge cold-rolled steel. Easy to install row aligner included for continuous row mounting.

Finish: Paint options include high-gloss, baked white enamel (WH), galvanized (GALV), matte black (MB) and smoke gray (SKGY). After fabrication, five-stage iron phosphate pre-treatment ensures superior paint adhesion and rust resistance.

**OPTICS** — Standard diffuse snap on/snap off lens eliminates pixels, improves uniformity and minimizes glare. L/LENS option available.

**ELECTRICAL** — L70>60,000hours. Utilizes high-output LEDs integrated on a two-layer circuit board, ensuring cool-running operation. Optional internal pluggable wiring harness for reduced labor cost in row mounting applications. (See PLR\_ordering information on page 3.) Electronic LED driver is rated for 75 input watts maximum (see Operational Data on page two for actual wattage consumption), **multi-volt input and 0-10V dimming standard.** This fixture is designed to withstand a maximum line surge of 2.5kV at 0.75kA combination wave for indoor locations, for applications requiring higher level of protection additional surge protection must be provided.

LEDs provide nominal 80 CRI at 3000 K, 3500 K, 4000 K, or 5000 K.

Lumen output up to 2,000 lumens per foot. In 86°F (30°C) ambient environments. Luminaire should be installed in applications where ambient temperatures do not exceed 86°F (30°C).

**INSTALLATION** — Tool-less channel cover for easy installation.

Fixture may be surface mounted (with or without ZSPRG hanger), pendant or stem mounted with appropriate mounting options. Three-point aligner locks in place for easy continuous row mounting.

**LISTINGS** — CSA certified to US and Canadian safety standards. For use in damp locations between -40°F (-40°C) and 86°F (30°C).

DesignLights Consortium® (DLC) qualified product. Not all versions of this product may be DLC qualified. Please check the DLC Qualified Products List at [www.designlights.org](http://www.designlights.org) to confirm which versions are qualified.

**WARRANTY** — 5-year limited warranty. Complete warranty terms located at: [www.acuitybrands.com/support/customer-support/terms-and-conditions](http://www.acuitybrands.com/support/customer-support/terms-and-conditions)

**Note:** Actual performance may differ as a result of end-user environment and application.

All values are design or typical values, measured under laboratory conditions at 25 °C.

Specifications subject to change without notice.

Catalog Number
Notes
Type



LED Striplight

# ZL1N

24", 48" and 96" Lengths



### A+ Capable Luminaire

This item is an A+ capable luminaire, which has been designed and tested to provide consistent color appearance and out-of-the-box control compatibility with simple commissioning.

- All configurations of this luminaire meet the Acuity Brands' specification for chromatic consistency
- This luminaire is part of an A+ Certified solution for nLight® or XPoint™ Wireless control networks marked by a shaded background\*

To learn more about A+, visit [www.acuitybrands.com/aplus](http://www.acuitybrands.com/aplus).

\*See ordering tree for details

# ZL1N LED Striplight



A+ Capable options indicated by this color background.

## ORDERING INFORMATION

Lead times will vary depending on options selected. Consult with your sales representative.

**Example:** ZL1N L48 3000LM FST MVOLT 40K 80CRI WH

Series	Length	Reflectors <sup>2</sup>	Nominal lumens <sup>3</sup>	Diffuser	Voltage
ZL1N LED striplight	L24 24" <sup>1</sup>	(blank) Less reflector	1500LM 1,500 lumens	FST Snap on frosted, diffuse	MVOLT 120-277V
		SMR Symmetric	2500LM 2,500 lumens	L/LENS No diffuser	120 120V
			3500LM 3,500 lumens	SBL FST Straight blade louver with snap on frosted, diffuse	208 208V
	L46 46" L48 48"	(blank) Less reflector	3000LM 3,000 lumens		240 240V
		ASR Asymmetric (L48 only)	5000LM 5,000 lumens		277 277V
		SMR Symmetric	7000LM 7,000 lumens		347 347V <sup>4</sup>
TZL1N LED striplight	L92 92"	(blank) Less reflector	6000LM 6,000 lumens		480 480V <sup>4</sup>
	L96 96"	SMR Symmetric	10000LM 10,000 lumens		
				14000LM 14,000 lumens	

Color temperature	Color rendering index	Options	Paint finish
30K 3000 K	80CRI 80 CRI	PLR___ Plug-in wiring <sup>5,6</sup>	WH White
35K 3500 K	90CRI 90 CRI	PLR1LVG Plug-in wiring-low voltage <sup>5,6</sup>	GALV Galvanized
40K 4000 K		E7W Emergency battery pack, <a href="#">ZW</a> CA Title 20 Noncompliant <sup>7</sup>	MB Matte black
50K 5000 K		2E7W Two Emergency battery packs, <a href="#">ZW</a> CA Title 20 Noncompliant <sup>7,8</sup>	SKGY Smoke gray
		E10WLCP Emergency battery pack, <a href="#">10W</a> Linear Constant Power, Certified in CA Title 20 MAEDBS <sup>7</sup>	
		2E10WLCP Two Emergency battery packs, <a href="#">10W</a> Linear Constant Power, Certified in CA Title 20 MAEDBS <sup>7,8</sup>	
		E15WLCP Emergency battery pack, <a href="#">15W</a> Linear Constant Power, Certified in CA Title 20 MAEDBS <sup>7,8</sup>	
		OUTEND Cord set to exit endplate of fixture	
		<b>Wireless Controls<sup>5</sup></b>	
		NLTAIR2 RLSXR10 nLight Air Generation 2 Fixture mount, LSXR sensor low mount 360°	
		NLTAIR2 RLSXR10EM nLight Air Generation 2 Fixture mount, LSXR sensor low mount 360°, UL924 Emergency operation <sup>9</sup>	
		<b>Individual Controls<sup>5</sup></b>	
		LBOZU 360° low mount motion sensor, pre-wired <sup>10</sup>	
		LBHOSZU 360° low mount motion sensor with dimming, pre-wired <sup>10</sup>	
		LBPZU 360° low mount motion sensor with photocell, pre-wired <sup>10</sup>	
		LBMOSZU 360° low mount motion sensor, dimming & switching photocell, pre-wired <sup>10</sup>	
		<b>Cord sets:<sup>11</sup></b>	
		CS1W Straight plug, 120V	
		CS3W Twist-lock, 120V	
		CS7W Straight plug, 277V	
		CS11W Twist-lock, 277V	
		CS25W Twist-lock, 347V	
		CS97W Twist-lock, 480V	
		CS93W 600V SE00W white cord, no plug (no voltage required)	

Accessories: Order as separate catalog number.			
HC36	Hanger chain, 36"	ZLR L24 SYM WH	24" symmetric reflector, white finish
ZACVH	Aircraft cable 10' (one pair)	ZLR L46 SYM UPL WH	46" symmetric reflector with uplight, white finish
ZLANGBKT	Luma-tilt™ angle bracket for shelf or ledge mounting only	ZLR L46 SYM WH	46" symmetric reflector, white finish
SQ_	Stem kit, 2" increments up to 48"	ZLR L48 ASY WH	48" asymmetric reflector, white finish
NPP16D	nLight® switching/dimming module	ZLR L48 SYM UPL WH	48" symmetric reflector with uplight, white finish
rPP20D	nLight® Air switching/dimming module	ZLR L48 SYM WH	48" symmetric reflector, white finish
LSXR	Sensor Switch® LSXR occupancy sensor <sup>4</sup>	ZLR L92 SYM UPL WH	92" symmetric reflector with uplight, white finish
ZSPRG	For 15/16" T-grid only	ZLR L92 SYM WH	92" symmetric reflector, white finish
WGZ24	24" wireguard, white <sup>12</sup>	ZLR L96 SYM UPL WH	96" symmetric reflector with uplight, white finish
WGZ48	48" wireguard, white <sup>12,13</sup>	ZLR L96 SYM WH	96" symmetric reflector, white finish
ZLR L24 SYM UPL WH	24" symmetric reflector with uplight, white finish	UNIVERSAL REFL ALIGNER	Universal reflector aligners, quantity 1

### Notes

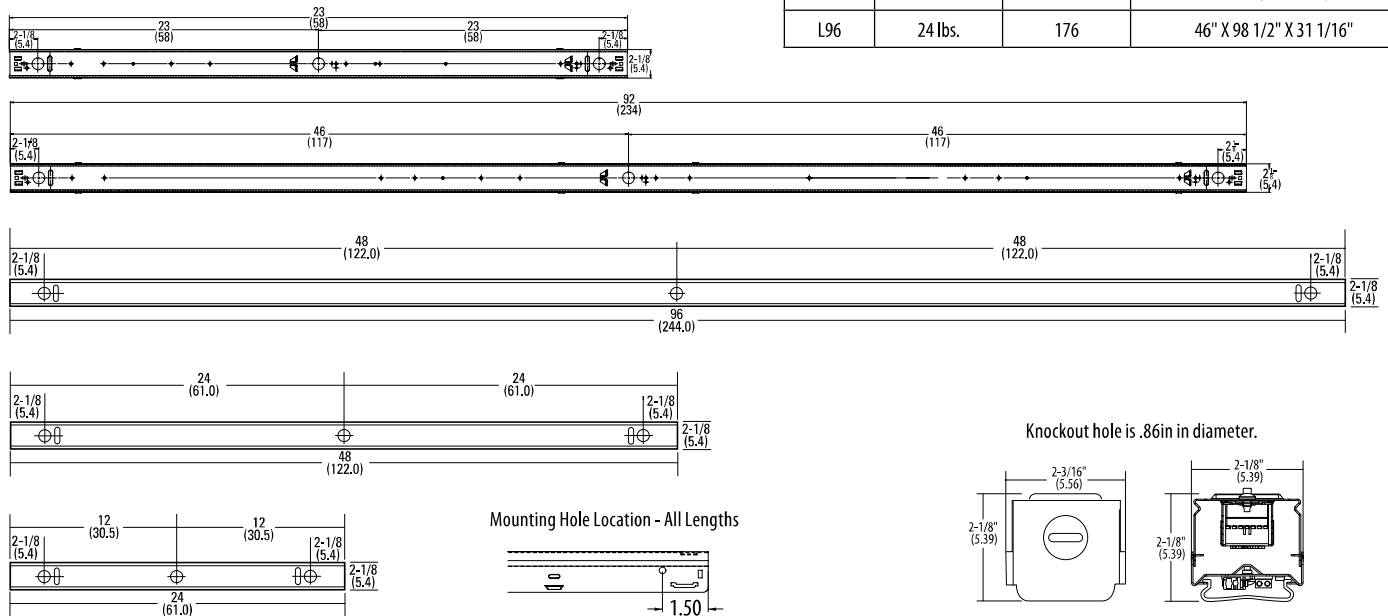
- Not available with 347V, 480V or Batteries
- Optional. Reflectors ship separately.
- See Operational Data on page 2 for actual lumens.
- Utilizes step down transformer.
- See ordering information on pages 4 and 5 and [rLSXR specification sheet](#) for more configurations. When choosing Sensor and PLR for same fixture, consult the factory.
- Not available with cord sets.
- MVOLT only. Not available with cord sets with plugs. Battery Spec sheet linked for more information.
- Only available with 10,000LM and 14,000LM packages.
- MVOLT only.
- Available with MVOLT, 347V and 480V only. This sensor configuration is suitable for minimum ambient temperature of 14°F (-10°C). See page 6 for low temperature option providing -4°F (-20°C) minimum ambient. Sensors come prewired, they must be snapped into place at time of installation.
- Cordsets exit back of fixture unless OUTEND option is specified. Must specify voltage (not required when ordering CS93W).
- Not compatible with reflector
- Order 2 for tandem double length fixtures (TZL1N).

# ZL1N LED Striplight

OPERATIONAL DATA												
	Nominal lumen package	Length (inches)	Delivered Lumens 3000 K CCT @ 77°F (25°C) ambient temperature		Delivered Lumens 3500 K CCT @ 77°F (25°C) ambient temperature		Delivered Lumens 4000 K CCT @ 77°F (25°C) ambient temperature		Delivered Lumens 5000 K CCT @ 77°F (25°C) ambient temperature		Wattage @ 120V/277V	Comparable Light Source
			80 CRI	90 CRI	80 CRI	90 CRI	80 CRI	90 CRI	80 CRI	90 CRI		
Lensed	1500LM	24	1738	1409	1777	1467	1804	1494	1871	1528	15	1-lamp 17W T8
	2500LM	24	2265	1846	2315	1900	2351	1947	2438	1991	19	1-lamp 17W T8
	3500LM	24	3586	2924	3666	3026	3723	3084	3860	3152	31	1-lamp 32W T8, 1-lamp 54W T5H0, 50W HID
	3000LM	46 or 48	3172	2586	3243	2677	3293	2728	3415	2788	25	1-lamp 32W T8, 1-lamp 54W T5H0, 50W HID
	5000LM	46 or 48	4417	3601	4515	3727	4585	3798	4754	3882	34	2-lamp 32W T8, 1-lamp 54W T5H0, 70W HID
	7000LM	46 or 48	6535	5328	6681	5515	6785	5619	7035	5744	52	3-lamp 32W T8, 2-lamp 54W T5H0, 100W HID
	6000LM	92 or 96	6561	5349	6708	5537	6812	5642	7063	5767	48	3-lamp 32W T8, 2-lamp 54W T5H0, 100W HID
	10000LM	92 or 96	8687	7082	8881	7331	9019	7470	9351	7636	68	4-lamp 32W T8, 2-lamp 54W T5H0, 100W HID
	14000LM	92 or 96	12457	10513	12735	10665	12933	10711	13409	10949	104	4-lamp 32W T8, 3-lamp 54W T5H0, 150W HID
Unlensed	1500LM	24	1881	1534	1923	1588	1953	1618	2025	1654	15	1-lamp 17W T8
	2500LM	24	2452	1999	2506	2069	2545	2108	2639	2155	19	1-lamp 17W T8
	3500LM	24	3882	3165	3969	3276	4031	3338	4179	3412	31	1-lamp 32W T8, 1-lamp 54W T5H0, 50W HID
	3000LM	46 or 48	3434	2800	3511	2898	3565	2953	3697	3019	25	1-lamp 32W T8, 1-lamp 54W T5H0, 50W HID
	5000LM	46 or 48	4781	3898	4888	4035	4964	4111	5147	4203	34	2-lamp 32W T8, 1-lamp 54W T5H0, 70W HID
	7000LM	46 or 48	7075	5768	7233	5971	7345	6083	7616	6219	52	3-lamp 32W T8, 2-lamp 54W T5H0, 100W HID
	6000LM	92 or 96	7103	5791	7261	5995	7374	6108	7646	6243	48	3-lamp 32W T8, 2-lamp 54W T5H0, 100W HID
	10000LM	92 or 96	9404	7667	9614	7937	9764	8087	10123	8266	68	4-lamp 32W T8, 2-lamp 54W T5H0, 100W HID
	14000LM	92 or 96	13485	10994	13786	11381	14001	11596	14516	11853	104	4-lamp 32W T8, 3-lamp 54W T5H0, 150W HID

## DIMENSIONS

All dimensions are shown in inches (centimeters) unless otherwise noted.  
Specifications subject to change without notice.

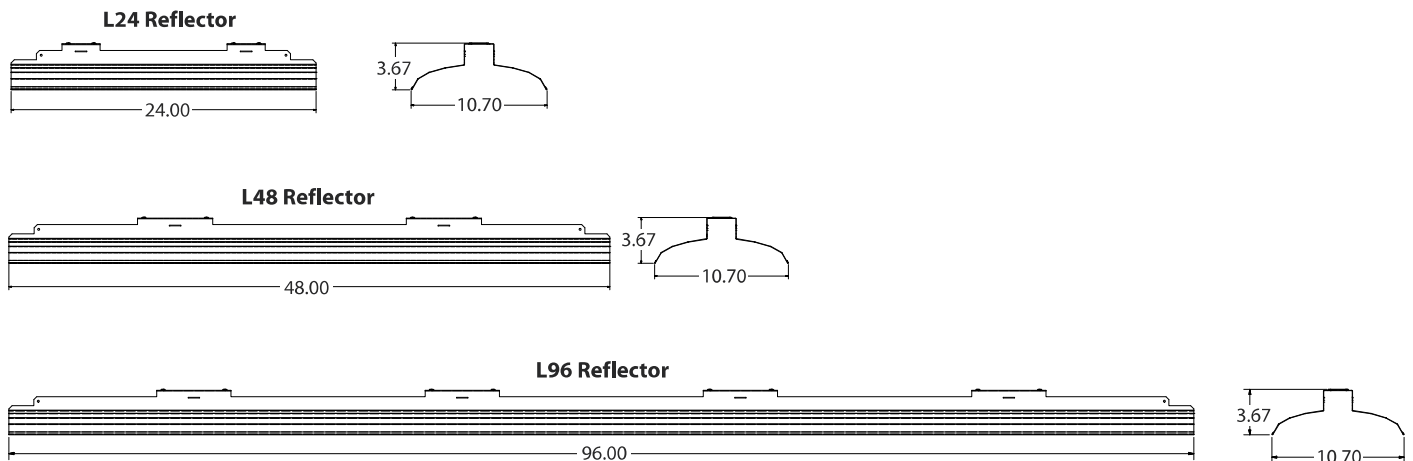


PALLET DIMENSIONS			
Length	Approximate weight	Fixtures per pallet	Approximate pallet dimensions (L x W x H)
L24	7 lbs.	408	46" X 51" X 32 11/16"
L46	11 lbs.	176	46" X 51" X 32 1/16"
L48	12 lbs.	176	46" X 51" X 31 3/8"
L92	22 lbs.	176	46" X 98 1/2" X 31 1/16"
L96	24 lbs.	176	46" X 98 1/2" X 31 1/16"

## PHOTOMETRICS

Please see [www.lithonia.com](http://www.lithonia.com)

## REFLECTORS (Optional)



## PHOTOMETRICS

Please see [www.lithonia.com](http://www.lithonia.com)

## PRODUCT INFORMATION

Advanced plug-in system with two-circuit capability. Available on industrial and strip products and a variety of architectural products mounted in continuous rows. 1, 2, 3 and 4-lamp fixtures. PLR22 (2-circuit) and crossover harness switches hot circuit serving next fixture in row. Reduces fixture types on job for alternating circuit applications (see example below.)

Easy one-step installation, saves up to 35% on labor costs. Expanded switching flexibility helps save energy.

Rows can be 50% longer with two-circuit systems. Polarized, lock-together nylon connectors prevent miswiring in the field. #12 THHN conductor, rated 600V, 90°C. White neutral wire included. Grounding accomplished by fixture in-row connectors.

CSA certified systems available with up to 2 circuits. G ground required.

Note: Specifications subject to change without notice.



Wiring

# PLR

Advanced 1 or 2-Circuit Plug-In

### ORDERING INFORMATION

Lead times will vary depending on options selected. Consult with your sales representative.

Series	Number of hot wires	Branch circuits		Dimming	Ground
PLR	(blank) Not required for 22	Circuits to which ballast is connected		LV Low-voltage dimming	G Ground, required
PLR22	1 Black	(blank) Not required for 22 or PLR1	Emergency circuit connected (blank) No emergency circuit		
	2 Black and red	A Black wire	ELA Emergency circuit wired to black wire		
		B Red wire	ELB Emergency circuit wired to red wire		

### Typical Applications

- Multiple-circuit and single-circuit for longer continuous rows
- Multiple-circuit with alternating fixtures on separate circuits, 2-circuit (PLR 22)
- Multiple circuit with night-lights located along row as desired

# ZL1N LED Striplight

## LSXR — Fixture Mount Occupancy Sensor (see [www.AcuityControls.com](http://www.AcuityControls.com) for additional information)

- Three interchangeable lens options to satisfy multiple mounting heights and coverage pattern requirements.
- Integrated mounting bracket drops lens down 3" from chase nipple.
- Single or dual relay versions — designed with robust protection from the harsh switching requirements of T5 and LED loads.
- Photocell and 0-10VDC dimming options.
- No PIR field calibration or sensitivity adjustments required.
- Sensor ambient temperature rating of 14°F (-10°C) to 131°F (55°C).

LSXR configuration	Comparable CMRB sensor	Old style sensor nomenclature
<b>For shortest lead times use one of the following LSXR configurations</b>		
LCOZU	CMRB 50	MSI
LCH0SZU	CMRB 50 D	MSID
LCPZU	CMRB 50 P	MSIPED
LAOZU	CMRB 6	MSI360
LAH0SZU	CMRB 6 D	MSI360D
LAPZU	CMRB 6 P	MSI360PED

**SELECTIONS BELOW WILL EXTEND ORDER LEAD TIME. CONSULT YOUR SALES REPRESENTATIVE FOR DETAILS.**

### SINGLE RELAY

#### ORDERING INFORMATION

**Example:** LAH0SZU

Series	Lens option	Dimming/Photocell	Max. dim level	Min. dim level	Temp/Humidity	Default occupancy time delay		
L LSXR passive infrared indoor occupancy sensor	A High mount, 360°	O None <sup>1</sup>	0 10 VDC	S Minimum dim level of ballast	Z None T Low temperature <sup>2</sup>	I 30 sec		
		H High/low occupancy operation	9 9 VDC			D 2.5 min		
	B Low mount, 360°	P Switching photocell (on/off) <sup>1</sup>	8 8 VDC			1 1 VDC	X 5.0 min	
		C High mount aisleway	M Dimming and switching photocell			7 7 VDC	2 2 VDC	R 7.5 min
	G Dimming and switching photocell with high/low occupancy operation					3 3 VDC	4 4 VDC	U 10.0 min (with minimum 15 minute on time)
						4 4 VDC	5 5 VDC	V 15.0 min
			5 5 VDC			6 6 VDC	W 20.0 min	
				6 6 VDC	Y 30.0 min			

#### Notes

- 1 Max and min dim levels not applicable with this option.
- 2 Ambient temperature rating of -4°F (-20°C) to 131°F (55°C).

### DUAL RELAY (Available with 120, 277, and 347V only)

#### ORDERING INFORMATION

**Example:** LA2KZU

Series	Lens option	Poles	Operating mode	Temp/Humidity	Default occupancy time delay
L LSXR passive infrared indoor occupancy sensor	A High mount, 360° B Low mount, 360° C High mount aisleway	2 Dual relay	J None	Z None T Low temperature <sup>1</sup>	I 30 sec
			K Alternating off relays (promotes even lamp wear)		D 2.5 min
			O Alternating off relays w/photocell		X 5.0 min
			P Switching photocell(on/off)		R 7.5 min
E Photocell on/off (pole 1 only)	U 10.0 min (with minimum 15 minute on time)				
F Photocell on/off - both poles (dual set-point)	V 15.0 min				
	W 20.0 min				
	Y 30.0 min				

#### Notes

- 1 Ambient temperature rating of -4°F (-20°C) to 131°F (55°C).

**Example:** LENS 50 J100

Replacement lenses: Order as separate catalog number.		
Series	Lens type	Package quantity
LENS	6 High mount 360°	[blank] Single Lens
	10 Low mount 360°	J10 10-pack
	50 High mount aisleway	J100 100-pack

## OPTIONS AND ACCESSORIES

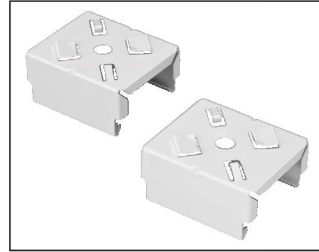
The Z Series fixture offers numerous options for almost every electrical and optical component, including a long list of field-installable accessories.



### HANGER CHAIN

36" chain with Y hanger.

Order as:  
HC36



### Z SPRING HANGER

Snap 'n' lock design requires no fasteners and can be used on T-grid ceiling or universal mounting systems.

Order as:  
ZSPRG



### ZACVH HANGER

10' Aircraft cable with Y hanger.

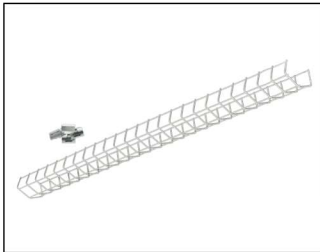
Order as:  
ZACVH



### ANGLE MOUNTING BRACKET

Luma-tilt™ angle bracket ships as a pair

Order as:  
ZLANGBKT



### WIRE GUARD

Order as:  
WGZ24  
WGZ48



The new degree of comfort.™



Commercial Electric  
Point-of-Use

## Point-of-Use commercial electric line is designed to provide hot water at the consumption point, eliminating costly temperature loss in long piping runs

### Features & Benefits

Our family of point-of-use electric water heaters come in 2.5, 6, 10, 15, 19.9 and 30-gallon models. They are available in 1440 W through 6000 W and in 120, 208, 240, 277 and 480 voltages with a maximum temperature setting of 170° F. These units are suited for a wide variety of applications and small enough for installation in limited spaces where modest quantities of hot water are required.

### Long Life Tank Design

Proprietary steel formulation with a unique coat of high temperature porcelain enamel maximizes corrosion resistance of the tank. Our R-Tech anode rod provides advanced technology and equalizes aggressive water action. This prolongs the effective life of the anode rod and in turn, the life of the tank.

### Long Life Heating Elements

Our patented resistor elements are designed with a specially treated, double layer of magnesium oxide and copper to resist corrosion.

### Efficient Design

Rigid polyurethane foam insulation provides superior insulating qualities resulting in reduced operating costs.

### Optional Wall Mount Kit

The wall mounting kit provides an easy way to mount the unit off the floor, out of the way for more useable floor space in a small area. Each kit is designed to be used on walls with 16" stud centers. All necessary parts are included in this easy to install kit. (Note: The 2-1/2 gallon model comes standard with a wall mounting kit.)

### Automatic Temperature Control

A surface mounted thermostat automatically cycles on and off to maintain the water temperature at a desired preset level.

### Temperature Limiting Control

Automatically and safely cuts off the power in the unlikely event that the water temperature exceeds 190°F.

### Temperature and Pressure Relief Valve

CSA/ASME rated and factory installed.

### Warranty

3-Year limited tank warranty

See Commercial Warranty Certificate for complete information.

**Efficiency** | These models have been tested according to DOE test procedures, and exceed the minimum energy factor requirements of ASHRAE (Part of the Federally mandated Energy Policy Act (EPact)).

Also exceeds energy efficiency codes of all states including California Energy Commission (CEC).

**Safety and Construction** | These products are design certified by Underwriters Laboratories (UL) to meet UL standard 174 as electric storage tank water heaters. All models are North Carolina and Massachusetts Code compliant. **Certified for 150 PSI maximum working pressure.**

*Continued next page*



## Rheem Point-of-Use

2.5 to 30-Gallon Capacities  
1.5 kW through 6 kW  
120, 208, 240, 277 and  
480 Voltages  
Single Phase  
Electric



INTEGRATED AIR & WATER





The new degree of comfort.™



Commercial Electric  
Point-of-Use

DIMENSIONAL INFORMATION (All dimensions shown in inches)									
MODEL	MIN WATTS	MAX WATTS	TANK GALLONS	A	B	C	D	E	SHIPPING WEIGHT (LBS.)
EGSP2	1,440	1,500	2-1/2	14	9-3/4	—	—	—	18
EGSP6	1,500	6,000	6	15-1/8	15-3/4	12-5/8	11-5/8	4-1/4	41
EGSP10	1,500	6,000	10	22-7/8	15-3/4	20-3/8	19-3/8	4-1/4	53
EGSP15	1,500	6,000	15	24-1/4	17-3/4	21-7/8	19-3/8	4-5/8	65
EGSP20	1,500	6,000	19.9	25-1/8	19-3/4	22-5/8	19-5/8	5-1/8	76
EGSP30	1,500	6,000	30	30	21-3/4	23	23	2-3/4	115

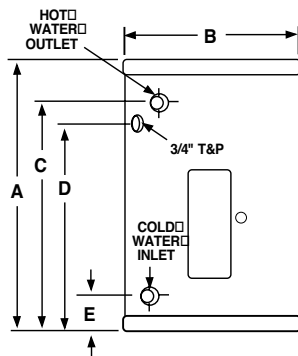
**Water Temp. Ratings:** Thermostat Type: Surface Mounted  
 Min. Delivered Temperature: 110° F  
 Max. Delivered Temperature: 170° F  
 High Temperature Limit: 190° F

**NOTE:** Basic model numbers are listed. When ordering, specify electrical input and kW to determine specific model number.

Canadian models have different model numbers than the U.S. models. Add a "C" before the model number (e.g. CEGSP2) when ordering.

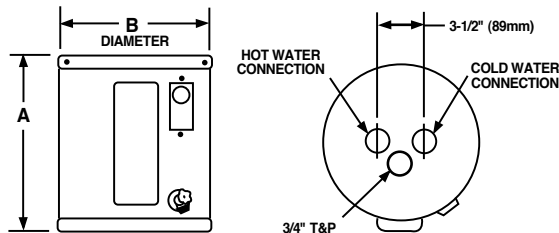
**Models:**  
 EGSP6  
 EGSP10  
 EGSP15  
 EGSP20  
 EGSP30

Water Connections  
 3/4" NPT



**Model:**  
 EGSP2

Water Connections  
 1/2" NPT



ELEMENT AVAILABILITY					
WATTAGE	120 V	208 V	240 V	277 V	480 V
1,440	**Y	N/A	N/A	N/A	N/A
1,500	Y	Y	**Y	N/A	N/A
2,000	Y	Y	Y	Y	Y
2,500	Y	Y	Y	N/A	N/A
3,000	Y	Y	Y	Y	Y
4,500	N/A	Y	*Y	*Y	*Y
6,000	N/A	Y	Y	Y	Y

\*Not available in EGSP6 & EGSP10

\*\*EGSP2 available only in these configurations.

ELECTRICAL CHARACTERISTICS					
ELEMENT WATTAGE	FULL LOAD CURRENT IN AMPERES				
	120 V	208 V	240 V	277 V	480 V
1,440	12.0	N/A	N/A	N/A	N/A
1,500	12.5	7.2	6.3	N/A	N/A
2,000	16.7	9.6	8.3	7.2	4.2
2,500	20.8	12.0	10.4	N/A	N/A
3,000	25.0	14.4	12.5	10.8	6.3
4,500	N/A	21.6	18.8	16.2	9.4
6,000	N/A	28.8	25.0	21.7	12.5

All models employ 1 heating element resulting in a 2-wire outlet (single phase) electrical configuration.

RECOVERY CAPACITIES						
ELEMENT WATTAGE	TEMPERATURE RISE - DEGREES F - GALLONS PER HOUR					
	40°F	60°F	80°F	100°F	120°F	140°F
1,440	15	10	7	6	5	4
1,500	15	10	8	6	5	4
2,000	20	14	10	8	7	6
2,500	25	17	13	10	8	—
3,000	30	20	15	12	10	9
4,500	46	30	23	18	15	13
6,000	61	41	30	24	20	17

### Recommended Specifications (for trade reference only)

Water heater(s) shall be model \_\_\_\_\_, manufactured by Rheem, having electrical input of \_\_\_\_\_ kW and a recovery rate of \_\_\_\_\_ GPH at a 100°F temperature rise. Water heater(s) shall have a storage capacity of \_\_\_\_\_ gallons. Water heater(s) shall have the UL/CSA seal of certification and be factory equipped with an CSA/ASME rated temperature and pressure relief valve. Tank(s) interior shall be coated with a high temperature

porcelain enamel and furnished with an R-Tech resitord magnesium anode rod rigidly supported. Water heater(s) shall meet or exceed the energy factor requirements of ASHRAE. Tanks shall have a working pressure rating of 150 psi, and shall be completely assembled. Water heater(s) shall be equipped with a copper, resitord, "screw-in" type element. Tank shall be insulated with rigid polyurethane foam insulation. Water heater(s) shall be equipped with a surface mounted thermostat with an integral, manual reset, high limit control. Water heater(s) shall be covered by a three year limited warranty against tank leaks.

In keeping with its policy of continuous progress and product improvement, Rheem reserves the right to make changes without notice.

Rheem Water Heating • 101 Bell Road  
 Montgomery, Alabama 36117-4305 • www.rheem.com

Rheem Canada Ltd./Ltée • 125 Edgeware Road, Unit 1  
 Brampton, Ontario L6Y 0P5 • www.rheem.com

Project No. 50018-240033 Carver Hall Biology Lab Rm. 184

PLEASE PROVIDE INFORMATION REQUESTED IN EACH SECTION

DATE AND TIME: Thursday, April 4, 2024 at 11:00am PM

PLEASE PRINT LEGIBLY

Page \_\_\_\_\_ of \_\_\_\_\_

PRINT NAME	Sign In Time	Sign Out Time	COMPANY NAME/ADDRESS	Gen Cont	Sub Cont	LA CONTRACTOR LICENSE NO.	PHONE NUMBER & FAX NUMBER	EMAIL
Maive Stansbury	10:43 AM	11:30	Nycan					stansburyganycominc.com
Tyler Regan	10:44	11:29	Regan Builders			35013		tylere@reganbuilders.net
Gage Atwell	10:44	11:28	Triad			715 71436 TR 2300A		gage@triadcrushon.com
Shawn Henderson	10:44	11:28	HCSI					CONCRETE@BEWSOUTH.NET
Christopher Casme	10:44	11:27	New Concept Properties LLC			73569		New Concept Properties@radwin.com
Seth Keys Martin Presence	10:44	11:30	Martin Presence					seth@martinpresence.net
Robyn Simmons	10:46	11:30	MS3		✓			estimating@markofs.net
Ayla Johnson	10:56	11:28	Ronald Johnson Investments, LLC		✓	66955		typhn05755@gmail.com
Kel Streeter	11:00 AM	11:40 AM	Streeter Const, LLC			94579		<del>kel@streeterce.net</del> kel@streeterce.net
Hunter Boggs	11:00 AM	11:33 AM	RTE Construction			60084		Hunter@HENDERBUDGERS.COM