



**ST. TAMMANY PARISH**

MICHAEL B. COOPER  
PARISH PRESIDENT

**May 24, 2024**

Please find the following addendum to the below mentioned BID.

**Addendum No.: 3**

**Bid#: 24-10-2**

**Project Name: Highway LA-21 Lift Station**

**Bid Due Date: Wednesday, May 29<sup>th</sup>, 2024 at 2:00 P.M.**



**GENERAL INFORMATION:**

---

**Receipt of this addendum shall be acknowledged by inserting its number in the space provided on the Proposal.**

**Specification Revision: Section 01025 – Measurement and Payment, Part 1.03, Note P has been revised to confirm cementitious coating will be required on proposed concrete wet well. See 01025 – Measurement and Payment for more details, in this Addendum below.**

**Specification Revision: Section 01025 – Measurement and Payment, Part 1.03, Note GG has been revised to confirm furnishment and installation of the electric chain joist is included in this pay item. See 01025 – Measurement and Payment for more details, in this Addendum below.**

**Drawing Revision: Sheet 10 – Site Layout Plan has been revised to include a note for the furnishment and installation of the electric chain joist. See Sheet 10 – Site Layout Plan for more details, in this Addendum below.**

**Drawing Revision: Sheet 10 – Site Layout Plan has been revised to reflect the revised servitude boundary lines. See Sheet 10 – Site Layout Plan for more details, in this Addendum below.**

**Drawing Revision: Sheet 12 – Lift Station Plan and Elevation has been revised to include notes for the required coatings on the existing and proposed concrete wet**



## ST. TAMMANY PARISH

MICHAEL B. COOPER  
PARISH PRESIDENT

wells. See 12 – Lift Station Plan and Elevation for more details, in this Addendum below.

Drawing Revision: Sheet 46 – Electrical Plan has been revised to revise table and include notes for the required electrical work to the electric chain joist equipment. See 46 – Electrical Plan for more details, in this Addendum below.

### ATTACHMENTS:

---

#### SPECIFICATIONS

##### 1. Section 01025 – Measurement and Payment

- Revise Note P. Item 116 – 10’ I.D. Concrete Wet Well of Part – 1.03 Base Bid to read:

Change from ‘Description and Measurement: Item 116 includes all labor, materials, equipment, and incidentals required to install the new 10’ I.D. Concrete Wet Well as indicated on the Drawings and Specifications. This item includes excavation and compaction of the backfill, installation and compaction of the aggregate bedding and geotextile fabric, connection of the sewer lines, and concrete top slab.’ to

‘Description and Measurement: Item 116 includes all labor, materials, equipment, and incidentals required to install the new 10’ I.D. Concrete Wet Well as indicated on the Drawings and Specifications. This item includes excavation and compaction of the backfill, installation and compaction of the aggregate bedding and geotextile fabric, connection of the sewer lines, **cementitious coating**, and concrete top slab.’

- Revise Note GG. Item 133 – Freestanding Jib Crane (1 Ton) of Part – 1.03 Base Bid to read:

Change from ‘Description and Measurement: Item 133 includes all labor, materials, equipment and incidentals required to install the freestanding jib crane, hoist, and foundation as indicated on the Drawings and Specifications. Measurement will be made by percentage complete of the lump sum price in accordance with the schedule of values submitted by the Contractor and accepted by the Engineer.’ to ‘Description and Measurement: Item 133 includes all labor, materials, equipment, and incidentals required to **furnish and** install the freestanding jib crane, hoist **with controls**, and foundation as indicated on the Drawings and Specifications. Measurement will be made by percentage complete of the lump sum price in accordance with the schedule of values submitted by the Contractor and accepted by the Engineer.’



## ST. TAMMANY PARISH

MICHAEL B. COOPER  
PARISH PRESIDENT

### DRAWINGS

#### 2. Sheet 10 – Site Layout Plan

- Add Note 3 to ‘Notes’:

“Contractor shall furnish and install an 1-ton electric chain hoist and controls (CM Lodestar or Approved Equal). This work shall be included in Item 133 – Freestanding Jib Crane (1 Ton) at no direct pay’

- Req’d Right of Use Servitude Area has been revised from +/- 0.02 AC to +/- 0.038 AC. The note and associated servitude linework has been revised accordingly.

#### 3. Sheet 12 – Lift Station Plan and Elevation

- Add Call to ‘Exist. Wet Well Elevation’ view:

“Exist. wet well shall be coated with a composite cementitious coating Madewell Mainstay DS-5 (or equal) over Madewell Mainstay ML-72 (or equal.)”

- Add Call to ‘Elevation’ view:

“Req’d concrete. wet well shall be coated with a composite cementitious coating Madewell Mainstay DS-5 (or equal) over Madewell Mainstay ML-72 (or equal.)”

#### 4. Sheet 46 – Electrical Plan

- Add rows ‘Panel: “LS”’ table for electric chain hoist
- Add ‘Specific Notes’ for conduit and electrical wiring for electric chain hoist controls:

“BURY 3/4" c. 4#10, 1#10 GND. FOR CIRCUIT LS-6 AND ADDITIONAL CIRCUIT FOR FUTURE POWER ROTATION. RUN UP INTO BASE OF JIB CRANE AND PROVIDE WEATHERPROOF JUNCTION BOX FOR TRANSITION TO FLEXIBLE POWER CORD. PROVIDE FESTOON GLIDERS AND TRACK AS NECESSARY TO SUPPORT THE FLEXIBLE POWER CORD ALONG THE JIB BOOM AND ACCOMMODATE THE RANGE OF THE ELECTRIC HOIST.”

**<< End of Addendum #3 >>**

## SECTION 01025 - MEASUREMENT AND PAYMENT

### PART 1 - GENERAL

#### 1.01 DESCRIPTION

- A. The Contractor shall furnish all labor, materials, tools, equipment, appurtenances and all services necessary to perform all Work required, at the lump sum or unit prices for the items listed herein.
- B. The items listed below beginning with Article 1.03 are the same pay items listed in the Unit Prices Table of Section 00300 - Louisiana Uniform Public Works Bid Form. These items constitute all of the pay items for completion of the Contract. No direct or separate payment will be made for providing miscellaneous, temporary, or accessory works, plant, services, Contractor's or Engineer's field offices, layout surveys, job signs, sanitary requirements, testing, safety devices, approval and record drawings, water supplies, power, removal of waste, watchmen, bonds, insurance, taxes, and any other items necessary to complete the intent and letter of the Contract Documents. Compensation for all such services, things and materials required for a complete and usable facility shall be included in the prices stipulated for the lump sum and unit pay items listed herein.

#### 1.02 ESTIMATED QUANTITIES

The estimated quantities for unit price bid items, as listed in the Louisiana Uniform Public Works Bid Form Unit Prices Table, are approximate only, and are included solely for the purpose of comparison of Bids. Certain pay item quantities are based on theoretical plan quantity and will not be adjusted; these items are noted in 1.03 or on the Drawings. The Owner does not expressly or by implication agree that the nature of the materials encountered below the surface of the ground, or the actual quantities of material encountered or required will correspond therewith and reserves the right to increase or decrease any quantity, or to eliminate any quantity, as Owner may deem necessary.

#### 1.03 PAY ITEMS (Base Bid)

- A. Item 101 – Mobilization
  - 1. Description and Measurement: Item 101 includes all work as identified in Section 01505 - Mobilization. Mobilization shall not exceed 5% of the total contract price for the Base Bid. No partial measurement will be made for this item. Measurement will be made upon completion of all required items in Section 01505.
  - 2. Payment: Mobilization will be paid at the lump sum price listed in the Unit Prices Table.
- B. Item 102 – Preconstruction Video Survey
  - 1. Description and Measurement: Item 102 includes all labor, materials, equipment and incidentals necessary for providing preconstruction audio-video recordings in accordance with Section 01050. No partial measurement will be made for this item. Measurements will be made upon provision of preconstruction videos accepted by the Engineer.

2. Payment: Preconstruction Video Survey will be paid at the lump sum price listed in the Unit Prices Table.
- C. Item 103 – Clearing and Grubbing
1. Description and Measurement: Item 103 includes all labor, materials, equipment, and incidentals necessary for removal and disposal of all vegetation, debris, and excess fill in accordance with the Drawings and Specifications, as identified by the Engineer, and as necessary to complete the required improvements. Measurement will be made by percentage complete of the lump sum price in accordance with the schedule of values submitted by the Contractor and accepted by the Engineer.
  2. Payment: Clearing and Grubbing will be paid at the at the lump sum price listed in the Unit Prices Table.
- D. Item 104 – Removal of Portland Cement Concrete Pavement
1. Description and Measurement: Item 104 includes all labor, materials, equipment, and incidentals necessary to remove Portland cement concrete pavement in accordance with the Drawings and Specifications, and as directed by the Engineer. The price bid for this item shall include full depth sawcut between pavement to be removed and to remain. Measurement will be made by the square yard of pavement removed and accepted by the Engineer.
  2. Payment: Removal of Portland Cement Concrete Pavement will be paid by the square yard price listed in the Unit Prices Table.
- E. Item 105 – Demolition
1. Description and Measurement: Item 105 includes all labor, materials, equipment, and incidentals necessary for removal and disposal of all items including the removal and delivery of the existing sewer pump equipment in accordance with the Drawings and Specifications, as identified by the Engineer, and as necessary to complete the required improvements. Measurement will be made by percentage complete of the lump sum price in accordance with the schedule of values submitted by the Contractor and accepted by the Engineer.
  2. Payment: Demolition will be paid at the at the lump sum price listed in the Unit Prices Table.
- F. Item 106 – Fill and Grading
1. Description and Measurement: Item 106 includes all labor, materials, equipment, and incidentals necessary for the fill and grading required in accordance with the Drawings and Specifications, as identified by the Engineer, and as necessary to complete the required improvements. Measurement will be made by percentage complete of the lump sum price in accordance with the schedule of values submitted by the Contractor and accepted by the Engineer.
  2. Payment: Fill and Grading will be paid at the at the lump sum price listed in the Unit Prices Table.
- G. Item 107 – Modifications to Existing Wet Well
1. Description and Measurement: Item 107 includes all labor, materials, equipment, and incidentals necessary for the rehabilitation and modification of the existing concrete wet well in accordance with the Drawings and Specifications. This item includes cleaning, coating, and necessary repairs; backfill, compaction, grouting,

and shaping of the existing concrete floor; penetrations and tie-in of the influent and effluent sewer lines. Measurement will be made by percentage complete of the lump sum price in accordance with the schedule of values submitted by the Contractor and accepted by the Engineer.

2. Payment: Modifications to Existing Wet Well will be paid at the lump sum price listed in the Unit Prices Table.
- H. Item 108 – Install Yard Hydrant and Backflow Preventer
1. Description and Measurement: Item 108 includes all labor, materials, equipment, and incidentals necessary to install a new backflow preventer, 1” Dia. water line and non-freeze hose bib as indicated on the Drawings. Excavation, handling, incidental adjustments, tie into existing water meter, bedding, backfill, and any other appurtenances required for the installation are included. Measurement will be made by percentage complete of the lump sum price in accordance with the schedule of values submitted by the Contractor and accepted by the Engineer.
  2. Payment: Install Non-Freeze Hose Bib and Backflow Preventer will be paid at the at the lump sum price listed in the Unit Prices Table.
- I. Item 109 – 2-inch Gas Line
1. Description and Measurement: Item 109 includes all labor, materials, equipment, and incidentals necessary for installing an open cut gas line in accordance with the Drawings and Specifications. Measurement will be made by linear foot of pipe installed and accepted by the Engineer.
  2. Payment: 2-inch Gas Line will be paid by the linear foot price listed in the Unit Prices Table.
- J. Item 110 – 10” Dia. DI MJ Gate Valve
1. Description and Measurement: Item 110 includes all labor, materials, equipment, and incidentals necessary to install the sewer force main gate valve in accordance with the Drawings and Specifications. Measurement will be made per each valve installed and accepted by the Engineer.
  2. Payment: 10” Dia. DI MJ Gate Valve will be paid at the per each price listed in the Unit Prices Table.
- K. Item 111 – Exist. 4” Dia. SFM Connection
1. Description and Measurement: Item 111 includes all labor, materials, equipment, and incidentals necessary to reroute and connect the existing influent 4” sewer force main in accordance with the Drawings and Specifications. Measurement will be made by percentage complete of the lump sum price in accordance with the schedule of values submitted by the Contractor and accepted by the Engineer.
  2. Payment: Exist. 4” Dia. SFM Connection will be paid at the lump sum price listed in the Unit Prices Table.
- L. Item 112 – Exist. 6” Dia. SFM Connection
1. Description and Measurement: Item 112 includes all labor, materials, equipment, and incidentals necessary to reroute and connect the existing influent 6” sewer force main in accordance with the Drawings and Specifications. Measurement will be made by percentage complete of the lump sum price in accordance with the schedule of values submitted by the Contractor and accepted by the Engineer.

2. Payment: Exist. 6” Dia. SFM Connection will be paid at the lump sum price listed in the Unit Prices Table.
- M. Item 113 – Exist. Effluent 8” Dia. SFM Connection
1. Description and Measurement: Item 113 includes all labor, materials, equipment, and incidentals necessary to connect to the existing effluent 8” sewer force main in accordance with the Drawings and Specifications. Measurement will be made by percentage complete of the lump sum price in accordance with the schedule of values submitted by the Contractor and accepted by the Engineer.
  2. Payment: Exist. Effluent 8” Dia. SFM Connection will be paid at the lump sum price listed in the Unit Prices Table.
- N. Item 114 – 10” Dia. PVC SFM (DR18)(Green)
1. Description and Measurement: Item 114 includes all labor, materials, equipment, excavations, backfill, bedding, and incidentals necessary for installing an open cut 10” Dia. PVC sewer force main in accordance with the Drawings and Specifications. Measurement will be made by linear foot of pipe installed and accepted by the Engineer.
  2. Payment: 10” Dia. PVC SFM (DR18)(Green) will be paid by the linear foot price listed in Unit Prices Table.
- O. Item 115 – 12” Dia. PVC (SDR26)(Green)
1. Description and Measurement: Item 115 includes all labor, materials, equipment, excavations, backfill, bedding, and incidentals necessary for installing an open cut 12” Dia. PVC gravity sewer line in accordance with the Drawings and Specifications. Measurement will be made by linear foot of pipe installed and accepted by the Engineer.
  2. Payment: 12” Dia. PVC (SDR26)(Green) will be paid by the linear foot price listed in Unit Prices Table.
- P. Item 116 – 10’ I.D. Concrete Wet Well
1. Description and Measurement: Item 116 includes all labor, materials, equipment, and incidentals required to install the new 10’ I.D. Concrete Wet Well as indicated on the Drawings and Specifications. This item includes excavation and compaction of the backfill, installation and compaction of the aggregate bedding and geotextile fabric, connection of the sewer lines, cementitious coating, and concrete top slab. Measurement will be made by percentage complete of the lump sum price in accordance with the schedule of values submitted by the Contractor and accepted by the Engineer.
  2. Payment: 10’ I.D. Concrete Wet Well will be paid at the lump sum price listed in the Unit Prices Table.
- Q. Item 117 – Access Hatch (48”x72”)(w/ Fall Protection System)
1. Description and Measurement: Item 117 includes all labor, materials, equipment, and incidentals necessary to install an access hatch with a fall protection system on the new concrete wet well in accordance with the Drawings and Specifications. Measurement will be made by percentage complete of the lump sum price in accordance with the schedule of values submitted by the Contractor and accepted by the Engineer.
  2. Payment: Access Hatch (48”x72”)(w/ Fall Protection System) will be paid at the lump sum price listed in the Unit Prices Table.

- R. Item 118 – Submersible Pumps (Internal Components & Installation)
1. Description and Measurement: Item 118 includes all labor, materials, equipment and incidentals required to install the new submersible pumps, guide rails, base, discharge piping, elevation controls, and internal components as indicated on the Drawings and Specifications. Measurement will be made by percentage complete of the lump sum price in accordance with the schedule of values submitted by the Contractor and accepted by the Engineer.
  2. Payment: Submersible Pumps (Internal Components & Installation) will be paid at the lump sum price listed in the Unit Prices Table.
- S. Item 119 – 8” Dia. Ductile Iron Pipe
1. Description and Measurement: Item 119 includes all labor, materials, equipment, excavations, backfill, and incidentals necessary for installing the 8” Dia. Ductile iron discharge pipe and required coatings in accordance with the Drawings and Specifications. Measurement will be made by linear foot of pipe installed and accepted by the Engineer.
  2. Payment: 8” Dia. Ductile Iron Pipe will be paid by the linear foot price listed in Unit Prices Table.
- T. Item 120 – 10” Dia. Ductile Iron Pipe
1. Description and Measurement: Item 120 includes all labor, materials, equipment, excavations, backfill, and incidentals necessary for installing the 10” Dia. Ductile iron discharge pipe in accordance with the Drawings and Specifications. Measurement will be made by linear foot of pipe installed and accepted by the Engineer.
  2. Payment: 10” Dia. Ductile Iron Pipe will be paid by the linear foot price listed in Unit Prices Table.
- U. Item 121 – Check Valve (8”)
1. Description and Measurement: Item 121 includes all labor, materials, equipment, and incidentals necessary to install check valve(s) on the sewer discharge pipe in accordance with the Drawings and Specifications. Measurement will be made per each valve installed and accepted by the Engineer.
  2. Payment: Check Valve (8”) will be paid at the per each price listed in the Unit Prices Table.
- V. Item 122 – Gate Valve (8”)
1. Description and Measurement: Item 122 includes all labor, materials, equipment, and incidentals necessary to install gate valve(s) on the sewer discharge pipe in accordance with the Drawings and Specifications. Measurement will be made per each valve installed and accepted by the Engineer.
  2. Payment: Gate Valve (8”) will be paid at the per each price listed in the Unit Prices Table.
- W. Item 123 – Air Release Valve
1. Description and Measurement: Item 123 includes all labor, materials, equipment, and incidentals necessary to install air release valve(s) on the sewer discharge pipe in accordance with the Drawings and Specifications. Measurement will be made per each valve installed and accepted by the Engineer.
  2. Payment: Air Release Valve will be paid at the per each price listed in the Unit Prices Table.



- X. Item 124 – Emergency Pump Out Assembly
  - 1. Description and Measurement: Item 123 includes all labor, materials, equipment and incidentals required to install a new Emergency Pump Out (EPO) as indicated on the Drawings and Specifications. Measurement will be made by percentage complete of the lump sum price in accordance with the schedule of values submitted by the Contractor and accepted by the Engineer.
  - 2. Payment: Emergency Pump Out Assembly will be paid at the lump sum price listed in the Unit Prices Table.
  
- Y. Item 125 – Electromagnetic Flowmeter
  - 1. Description and Measurement: Item 125 includes all labor, materials, equipment, and incidentals necessary to install the electromagnetic flow meter on the sewer discharge pipe in accordance with the Drawings and Specifications. Measurement will be made per each electromagnetic flowmeter installed and accepted by the Engineer.
  - 2. Payment: Electromagnetic Flowmeter will be paid at the per each price listed in the Unit Prices Table.
  
- Z. Item 126 – Ductile Iron Fittings
  - 1. Description and Measurement: Item 126 includes all labor, materials, equipment, and incidentals necessary for installing all types of mechanical joint ductile iron fittings, including flanged reducers and bends, and required coatings in accordance with the Drawings and Specifications, for buried pipe only. Measurement will be made per pound of fitting installed and accepted by the Engineer. Weights used in measurement shall be as shown in the accepted submittal for each type of fitting.
  - 2. Payment: Ductile Iron Fittings will be paid by the per pound price listed in the Unit Prices Table.
  
- AA. Item 127 – Pipe Support
  - 3. Description and Measurement: Item 127 includes all labor, materials, equipment, and incidentals necessary to install the pipe support(s) for the sewer discharge pipe in accordance with the Drawings and Specifications. Measurement will be made per each pipe support installed and accepted by the Engineer.
  - 4. Payment: Pipe Support will be paid at the per each price listed in the Unit Prices Table.
  
- BB. Item 128 – 6” Thick Portland Cement Concrete Pavement
  - 1. Description and Measurement: Item 128 includes all labor, materials, equipment, and incidentals necessary for furnishing, installing, forming, jointing, finishing, and curing concrete pavement; in accordance with the Drawings and Specifications. Grading and compaction of base material and provision, placement, and compaction of incidental granular material to grade below paving are included. Measurement will be made by the square yardage of concrete pavement installed and accepted by the Engineer.
  - 2. Payment: 6” Thick Portland Cement Concrete Pavement will be paid at the square yard price listed in the Unit Prices Table.

- CC. Item 129 – Aggregate Surface Course
1. Description and Measurement: Item 129 includes all labor, materials, equipment, and incidentals necessary for installing aggregate surface course in accordance with the Drawings and Specifications. Grading and compaction of base material and provision, placement, and compaction of incidental granular material to grade below paving are included. Measurement will be made by the square yardage of aggregate surface course installed and accepted by the Engineer.
  2. Payment: Aggregate Surface Course will be paid at the square yard price listed in the Unit Prices Table.
- DD. Item 130 – Electrical Conduit and Wiring
1. Description and Measurement: Item 130 includes all labor, materials, equipment and incidentals required to provide electrical service to the control panel, pumps, and crane as indicated on the Drawings and Specifications. Excavation, handling, incidental adjustments, electrical conduit, backfill, and any other appurtenances required for the installation are included. Measurement will be made by percentage complete of the lump sum price in accordance with the schedule of values submitted by the Contractor and accepted by the Engineer.
  2. Payment: Electrical Conduit and Wiring will be paid at the lump sum price listed in the Unit Prices Table
- EE. Item 131 – Control Panel & Support Structure (w/ Metal Roof)
1. Description and Measurement: Item 131 includes all labor, materials, equipment and incidentals required to install a new control panel, structural support, and roof as indicated on the Drawings and Specifications. Excavation, handling, incidental adjustments, structural metal, anchor bolts, foundation system, backfill, roofing, and any other appurtenances required for the installation are included. Measurement will be made by percentage complete of the lump sum price in accordance with the schedule of values submitted by the Contractor and accepted by the Engineer.
  2. Payment: Control Panel & Support Structure (w/ Metal Roof) will be paid at the lump sum price listed in the Unit Prices Table.
- FF. Item 132 – Stand-by Natural Gas Generator (125kW)
1. Description and Measurement: Item 132 includes all labor, materials, equipment and incidentals required to install a new 125 kW generator and ATS as indicated on the Drawings and Specifications. Measurement will be made by percentage complete of the lump sum price in accordance with the schedule of values submitted by the Contractor and accepted by the Engineer.
  2. Payment: Stand-by Natural Gas Generator (125kW) will be paid at the lump sum price listed in the Unit Prices Table.
- GG. Item 133 – Freestanding Jib Crane (1 Ton)
1. Description and Measurement: Item 133 includes all labor, materials, equipment and incidentals required to furnish and install the freestanding jib crane, hoist with controls, and foundation as indicated on the Drawings and Specifications. Measurement will be made by percentage complete of the lump sum price in accordance with the schedule of values submitted by the Contractor and accepted by the Engineer.
  2. Payment: Freestanding Jib Crane (1 Ton) will be paid at the lump sum price listed in the

## Unit Prices Table.

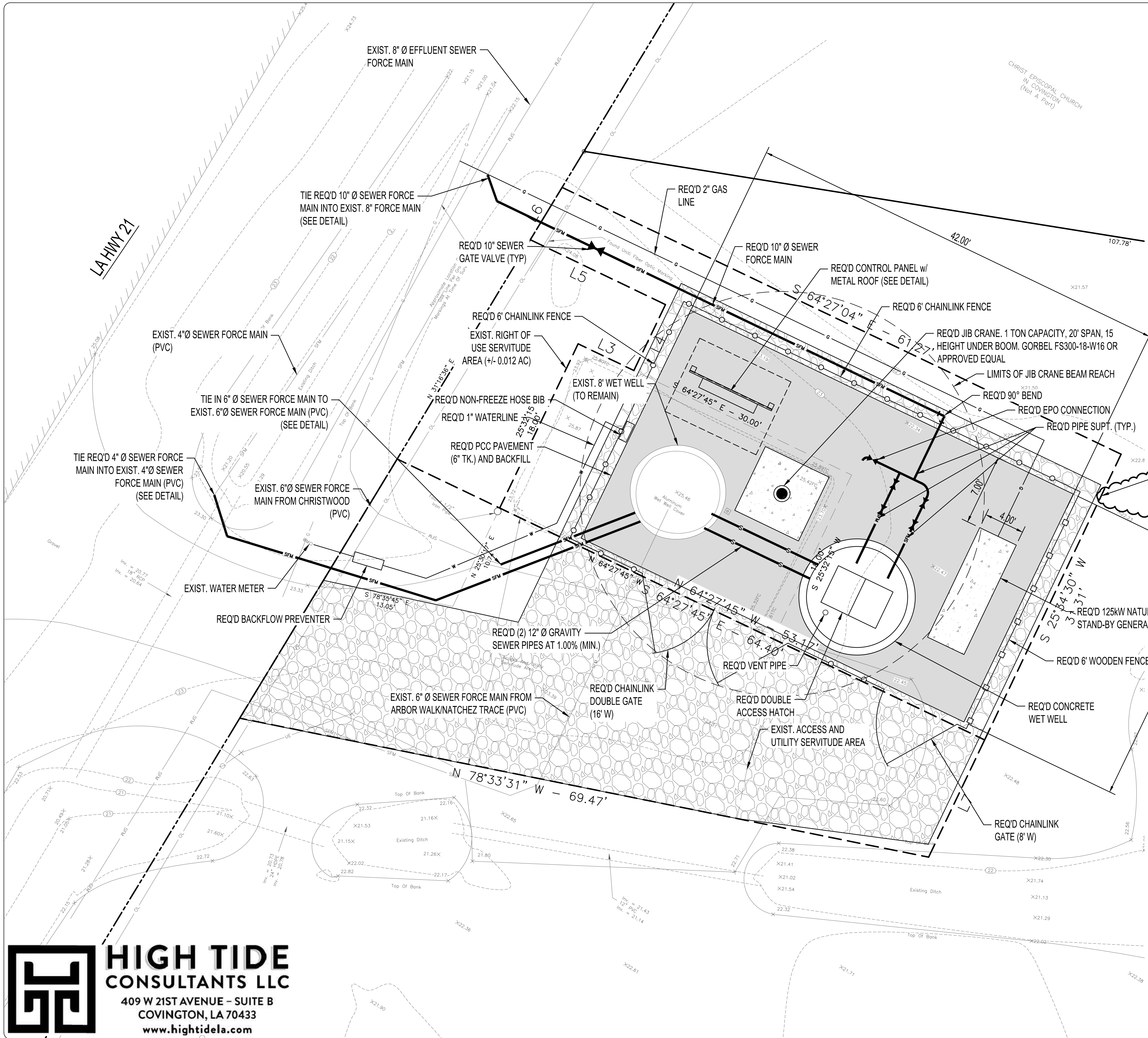
- HH. Item 134 – 6’ Wooden Fence
1. Description and Measurement: Item 134 includes all labor, materials, equipment, and incidentals necessary for installing a new 6’ Wooden fence in accordance with the Drawings and Specifications. Measurement will be made by linear foot of fence installed and accepted by the Engineer. Gates will not be paid separately.
  2. Payment: 6’ Wooden Fence will be paid by the linear foot price listed in Unit Prices Table.
- II. Item 135 – 6’ Chain Link Fence & Gates
1. Description and Measurement: Item 135 includes all labor, materials, equipment, and incidentals necessary for installing a new 6’ chain-link fence and gates (black) in accordance with the Drawings and Specifications. Measurement will be made by linear foot of fence installed (including gates) and accepted by the Engineer. Gates will not be paid separately.
  2. Payment: 6’ Chain Link Fence & Gates will be paid by the linear foot price listed in Unit Prices Table.
- JJ. Item 136 – Silt Fence:
1. Description and Measurement: Item 136 includes all labor, materials, equipment and incidentals required to install a silt fence as indicated on the Drawings and Specifications. Measurement will be made by linear foot of silt fence installed and accepted by the Engineer.
  2. Payment: Silt Fence will be paid by the linear foot price listed in Unit Prices Table.
- KK. Item 137 – Temporary Bypass Pump System
1. Description and Measurement: Item 137 includes all necessary wastewater flow control for continuous operation of the existing lift station in accordance with Section 02995 - Temporary Bypass Pumping and in accordance with the Drawings is included in this item. Measurement will be made by percentage complete of the lump sum price in accordance with the schedule of values submitted by the Contractor and accepted by the Engineer.
  2. Payment: Temporary Bypass Pump System will be paid by the lump sum price listed in Unit Prices Table.
- LL. Item 138 – Site Restoration:
1. Description and Measurement: Item 138 includes all labor, materials, equipment, and incidentals required to restore project sites to their original condition and to accomplish any supporting work required in order to carry out the intent of the Contract Documents. This includes, but is not limited to, miscellaneous embankment (not covered by other pay item), grading, ditch grading, reinstatement of signs & mailboxes, seeding, sodding, and other items as necessary to restore the site to pre-construction condition. No payment will be made for restoring any damage caused by the Contractor’s operations. Measurement will be made by percentage complete of the lump sum price in accordance with the schedule of values submitted by the Contractor and accepted by the Engineer.
  2. Payment: Site Restoration will be paid at the lump sum price listed in the Unit

Prices Table.

**PART 2 - PRODUCTS (NOT USED)**

**PART 3 - EXECUTION (NOT USED)**

**END OF SECTION**



- NOTES**
- PRIOR TO BEGINNING WORK, CONTRACTOR SHALL CONFIRM SIZE AND LOCATION OF EXISTING SEWER FORCE MAIN AND WATER LINE. IF INCONSISTENCIES OCCUR BETWEEN PLANS AND FIELD VERIFICATIONS, CONTRACTOR SHALL COORDINATE WITH PARISH PRIOR TO CONSTRUCTION.
  - SEE DETAIL SHEETS FOR REQUIRED REINFORCEMENT INFORMATION ON JIB CRANE AND GENERATOR PADS.
  - CONTRACTOR SHALL FURNISH AND INSTALL AN 1-TON ELECTRIC CHAIN JOIST AND CONTROLS (CM LODESTAR OR APPROVED EQUAL). THIS WORK SHALL BE INCLUDED IN ITEM 133 - FREESTANDING JIB CRANE (1 TON) AT NO DIRECT PAY.

**LEGEND - REQUIRED**

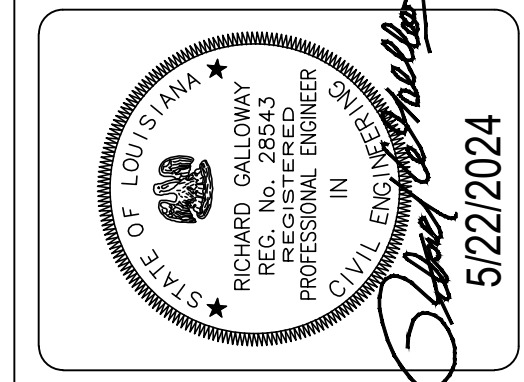
	SEWER FORCE MAIN
	6" PORTLAND CEMENT CONCRETE PAVEMENT
	AGGREGATE SURFACE COURSE
	WATERLINE
	6" CHAINLINK FENCE
	6" WOODEN FENCE
	GAS LINE



DEPT. OF UTILITIES  
 ST. TAMMANY PARISH  
 GOVERNMENT  
 620 N. TYLER STREET  
 COVINGTON, LA 70433

DATE:	DESCRIPTION OF REVISION
4/17/24	ADDENDUM NO. 1
5/22/24	ADDENDUM NO. 3

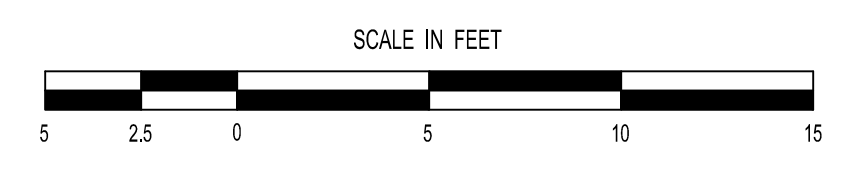
DESIGNED BY:	THA
DRAWN BY:	KRG
CHECKED BY:	RCG
SUBMITTED BY:	HCH THE CONSULTANTS
PROJECT No.:	TU23000173
ISSUE DATE:	3/9/24 (BID)
APPROVED BY:	RCG
SHEET SIZE:	ANSI D
SCALE:	AS SHOWN



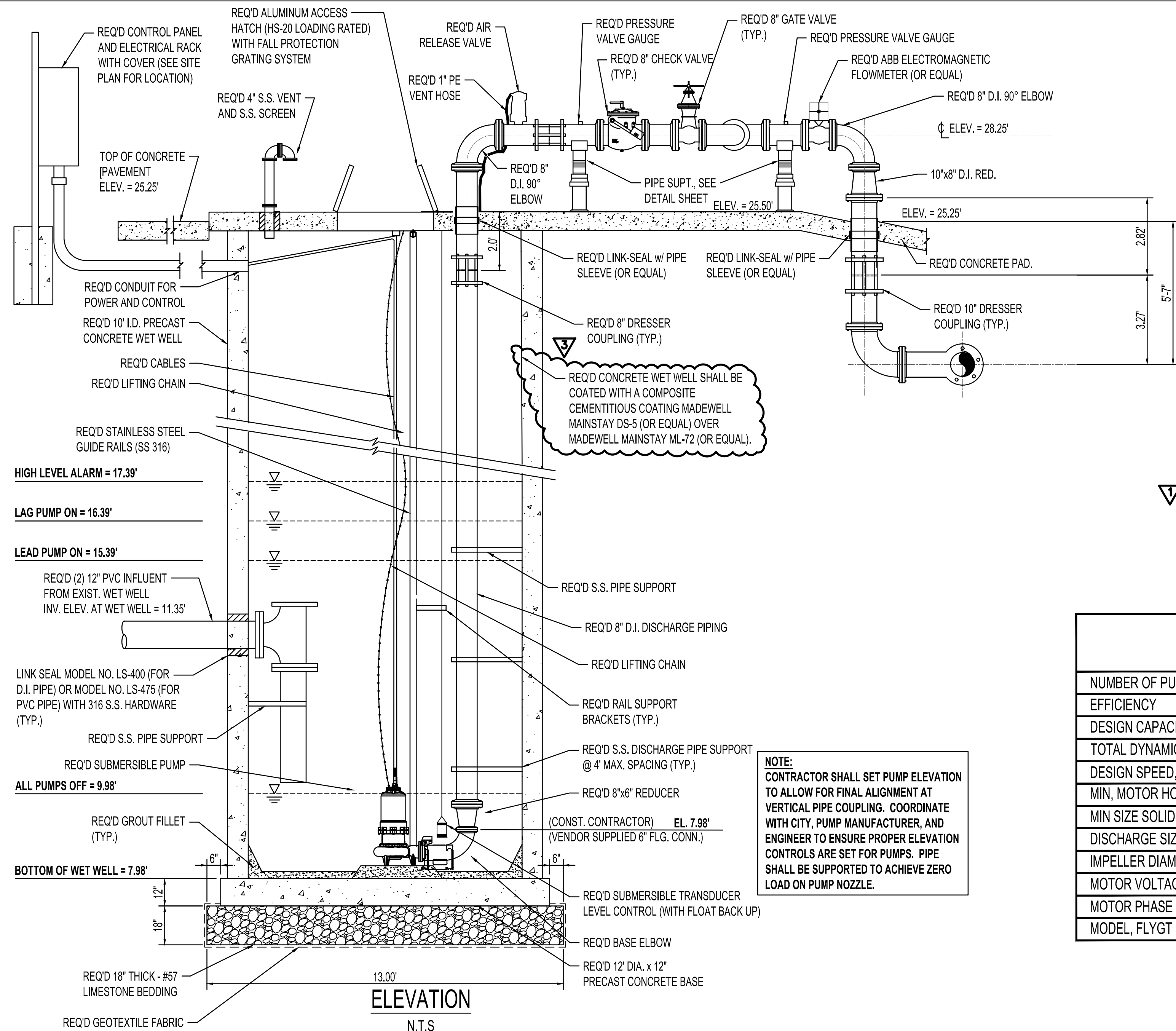
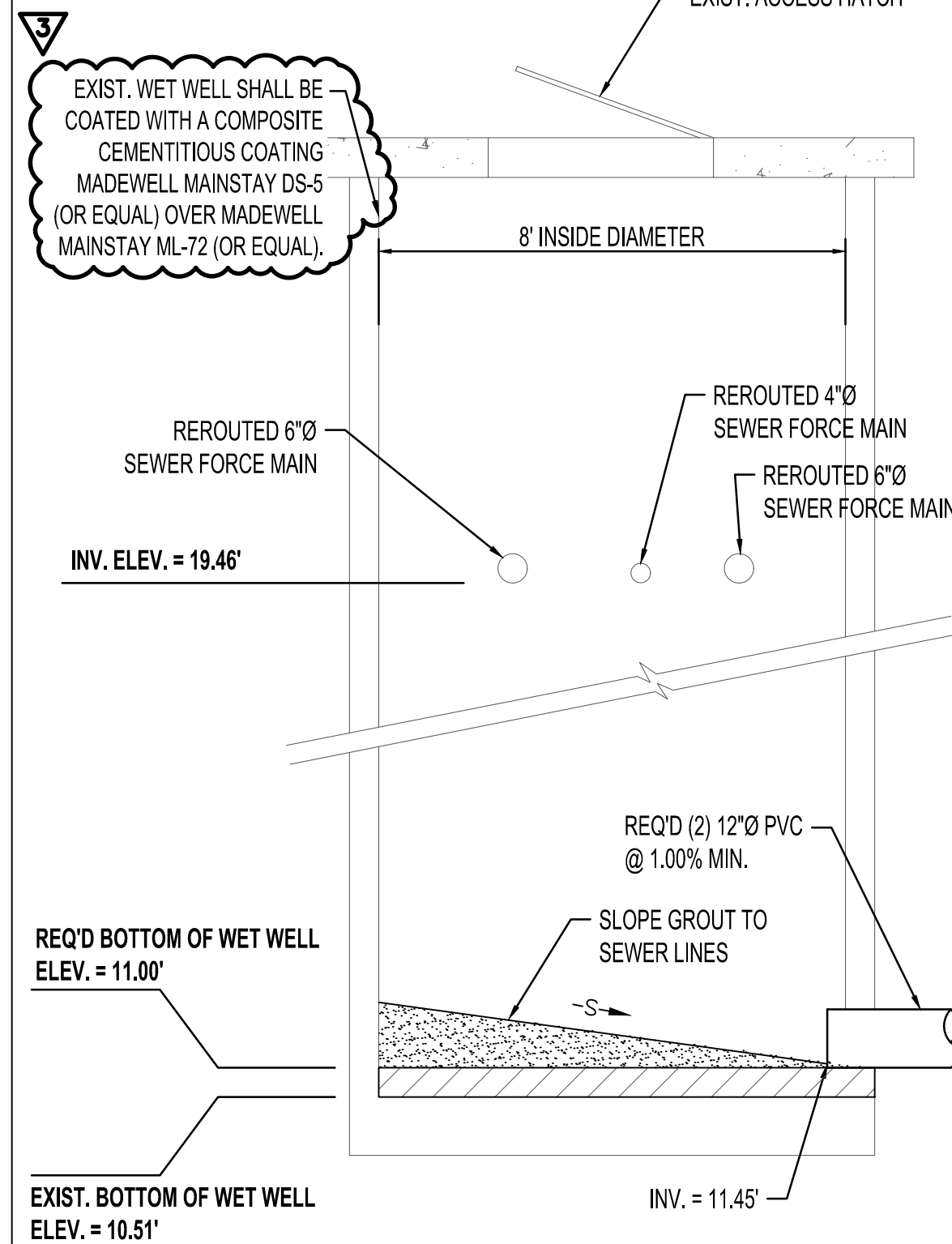
HIGHWAY LA-21 LIFT STATION  
 WST SEWER SYSTEM  
 MADISONVILLE, LOUISIANA  
 PROJECT No.: TU23000173

SITE LAYOUT PLAN

**SITE LAYOUT PLAN**



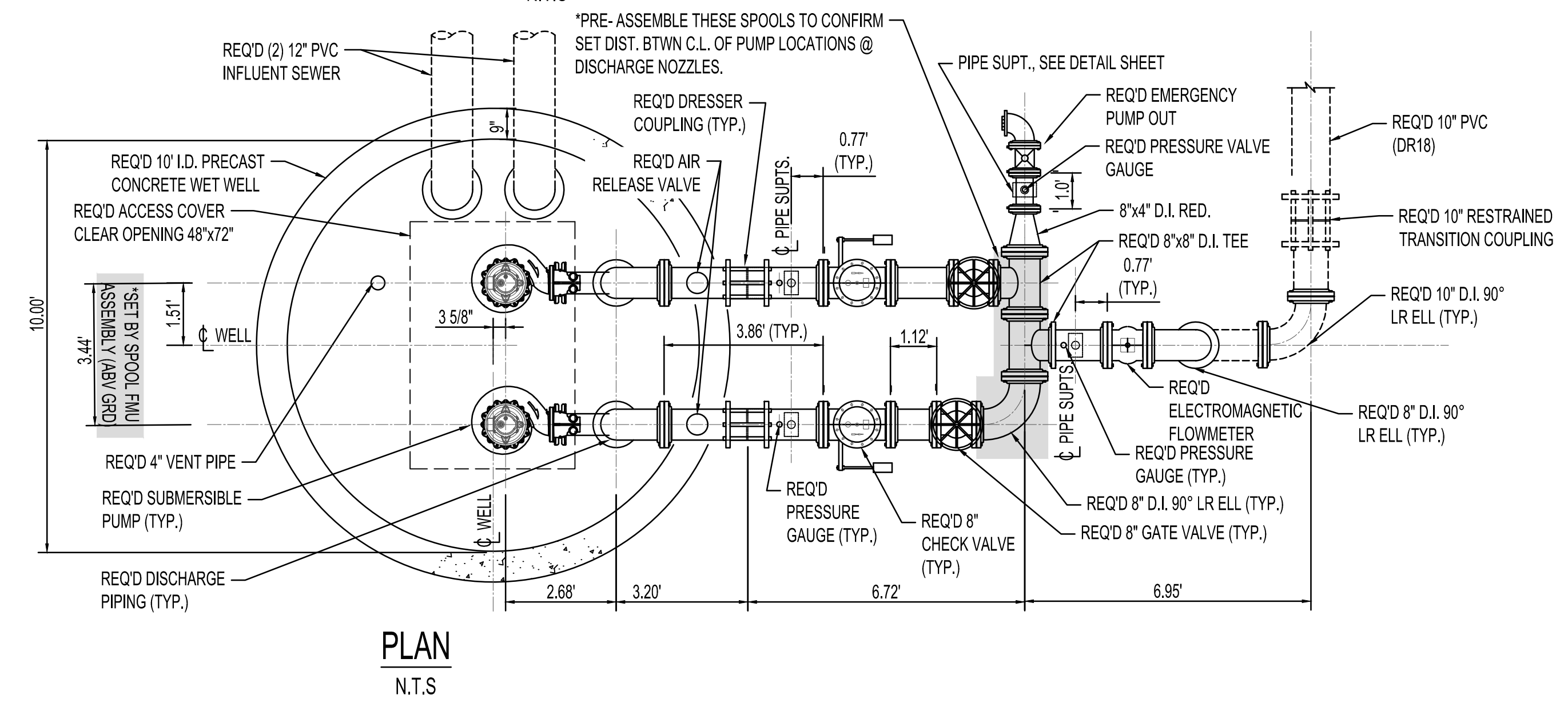
**HIGH TIDE  
 CONSULTANTS LLC**  
 409 W 21ST AVENUE - SUITE B  
 COVINGTON, LA 70433  
 www.hightidela.com



**NOTE:**  
CONTRACTOR SHALL SET PUMP ELEVATION TO ALLOW FOR FINAL ALIGNMENT AT VERTICAL PIPE COUPLING. COORDINATE WITH CITY, PUMP MANUFACTURER, AND ENGINEER TO ENSURE PROPER ELEVATION CONTROLS ARE SET FOR PUMPS. PIPE SHALL BE SUPPORTED TO ACHIEVE ZERO LOAD ON PUMP NOZZLE.

- NOTES**
- PUMPS, GUIDE RAILS, BASE ELBOWS, AND ACCESS HATCHES SHALL BE SUPPLIED BY THE PUMP SUPPLIER, OR CERTIFIED AS COMPATIBLE BY THE RESPECTIVE MANUFACTURERS.
  - THE PRECISE LOCATION OF HATCHES, AND LOCATION/ SPACING OF PUMPS, GUIDE RAILS, AND BASE ELBOWS, SHALL BE AS RECOMMENDED BY THE MANUFACTURER.
  - ALL GUIDE RAILS, BRACKETS, CHAINS, LIFTING CABLES, BOLTS, NUTS, FASTENERS, AND ANY HARDWARE WITHIN THE WET WELL SHALL BE TYPE 316 STAINLESS STEEL.
  - ALL INTERNAL PIPING AND FITTINGS SHALL BE FLANGED DUCTILE IRON. PIPING SHALL BE INDEPENDENTLY SUPPORTED BY 316 STAINLESS STEEL ASSEMBLIES, THE THROUGH-WALL MECHANICAL SEALS SHALL NOT BE RELIED UPON FOR WEIGHT BEARING OR THRUST RESTRAINT.
  - PRIOR TO CONSTRUCTION, THE CONTRACTOR SHALL SUBMIT TO THE ENGINEER FOR REVIEW OF A COMPLETE SET OF SHOP DRAWINGS OF EACH STRUCTURE AND FOR ALL EQUIPMENT IN THE WET WELL AND ABOVE GROUND FOR THE DISCHARGE PIPING SEPARATELY DETAILING DIMENSIONS, PIPE/ VALVES CLEARANCE, SIZES AND ANY OTHER NECESSARY DETAILS.
  - NON-BURIED PIPES, VALVES, AND FITTINGS SHALL BE COATED IN ACCORDANCE WITH SECTION 09800.
  - BEDDING MATERIAL SHALL BE 18" THICK COMPACTED LIMESTONE UNDERLAIN BY GEOTEXTILE FABRIC (GEOTEX 200ST OR EQ.)
  - ACCESS HATCHES AND GRATING SYSTEM SHALL MEET THE REQUIREMENTS OF OSHA STANDARD 29 CFR 1926.502(C). HOLD OPEN DEVICE AND HARDWARE SHALL BE TYPE 316 STAINLESS STEEL. HATCH AND GRATE SHALL BE BILCO OR EQUAL APPROVED BY ENGINEER.
  - CONTRACTOR SHALL PLUMB AND RETURN AIR RELEASE VENT HOSE TO DISCHARGE INTO THE WET WELL.
  - VENT PIPE, PRESSURE GAUGE CONNECTIONS, PIPE SUPPORTS, AND VENT PIPE WALL PENETRATIONS SHALL BE IN ACCORDANCE WITH DETAILS SHOWN IN THE DETAIL SHEETS.
  - REQUIRED BACKFILL MATERIAL SHALL BE COMPACTED GRANULAR MATERIAL (RIVER SAND), MIN. DENSITY 95% STANDARD PROCTOR (ASTM D698), PLACED IN 12" MAX LAYERS. THE EXCAVATION AND BACKFILL REQUIREMENTS APPLY PER SECTION 02300. WORK AND BACKFILL SHALL BE INCLUDED UNDER ITEM NO. 116 - 10' I.D. CONCRETE WET WELL.

PROPERTY	VALUE
NUMBER OF PUMPS	2
EFFICIENCY	73.2%
DESIGN CAPACITY PER PUMP, GPM	850
TOTAL DYNAMIC HEAD, FEET	120
DESIGN SPEED, RPM	1775
MIN. MOTOR HORSEPOWER PER/PUMP	60
MIN SIZE SOLIDS PASSED, INCH	3"
DISCHARGE SIZE, INCH	6"
IMPELLER DIAMETER, MM	310
MOTOR VOLTAGE	460
MOTOR PHASE	3
MODEL, FLYGT (w SMART RUN CONTROLLER) OR APPROVED EQUAL	NP 3202 HT3-458



**HIGHTIDE CONSULTANTS LLC**  
 409 W 21ST AVENUE - SUITE B  
 COVINGTON, LA 70433  
 www.hightidela.com  
 HTC PROJ# 23-161

**LIFT STATION  
 PLAN AND ELEVATION**



**DEPT. OF UTILITIES  
 ST. TAMMANY PARISH  
 GOVERNMENT  
 620 N. TYLER STREET  
 COVINGTON, LA 70433**

DATE	DESCRIPTION OF REVISION
4/17/24 <td>ADDENDUM NO. 1</td>	ADDENDUM NO. 1
5/22/24 <td>ADDENDUM NO. 3</td>	ADDENDUM NO. 3

DESIGNED BY:	THA
DRAWN BY:	KRG
CHECKED BY:	RCG
SUBMITTED BY:	HCH (IE CONSULTANTS)
PROJECT No.:	TU23000173
ISSUE DATE:	3/8/24 (BID)
APPROVED BY:	RCG
SHEET SIZE:	ANSI D
SCALE:	AS SHOWN

STATE OF LOUISIANA  
 RICHARD GALLOWAY  
 REG. NO. 28543  
 PROFESSIONAL ENGINEER  
 IN  
 CIVIL ENGINEERING  
 5/22/2024

**HIGHWAY LA-21 LIFT STATION  
 WST SEWER SYSTEM  
 MADISONVILLE, LOUISIANA  
 PROJECT No.: TU23000173**

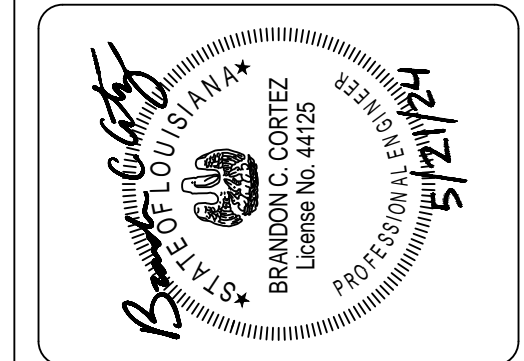
LIFT STATION  
 PLAN AND ELEVATION



DEPT. OF UTILITIES  
ST. TAMMANY PARISH  
GOVERNMENT  
620 N. TYLER STREET  
COVINGTON, LA 70433

DATE:	DESCRIPTION OF REVISION
4/17/2024	ADDENDUM #1 - ADD PANEL 'LS'
5/22/2024	ADDENDUM #2 - CKT FOR CHAIN HOIST

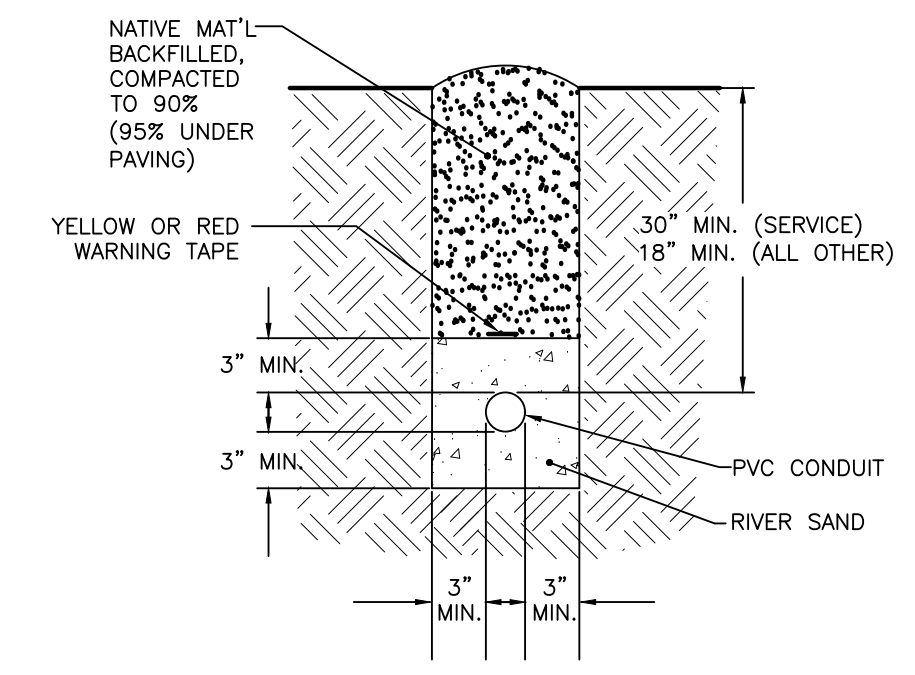
No.	DESIGNED BY:	BCC	DRAWN BY:	BCC	CHECKED BY:	BCC	SUBMITTED BY:	HIGH TIDE CONSULTANTS	PROJECT No.:	TU23000173	ISSUE DATE:	3/8/2024	APPROVED BY:	BCC	SHEET SIZE:	ANSI D	SCALE:
1																	



HIGHWAY LA-21 LIFT STATION  
WST SEWER SYSTEM  
MADISONVILLE, LOUISIANA  
PROJECT No.: TU23000173

ELECTRICAL PLAN

SHEET NO.  
46  
SHEET 46 of 46



## CONDUIT BURIAL DETAIL

**PANEL: "LS"** 480V PRIMARY, 120/240V SECONDARY 1 PH, 3W NEMA 3R, 5KVA TRANSFORMER 20A PRIMARY MAIN BREAKER 30A SECONDARY MAIN BREAKER

POLE SPC.	CKT. NO.	POLES -TRIP	WIRE SIZE	CIRCUIT LOAD	CONN. LOAD		CIRCUIT LOAD	WIRE SIZE	POLES -TRIP	CKT. NO.	POLE SPC.
					A	B					
1	1	1-20	12	WP GFI RECEPT	180	1800	GEN. BLOCK HEATER	10	1-20	2	2
3	3	1-20	-	SPARE	-	-	GEN. BATTERY CHARGER	10	1-20	4	4
5	-	-	-	SPACE	-	-	ELECTRIC CHAIN HOIST	10	1-20	6	6
7	-	-	-	-	-	-	SPARE	-	1-20	8	8
9	-	-	-	-	-	-	SPARE	-	1-20	10	10

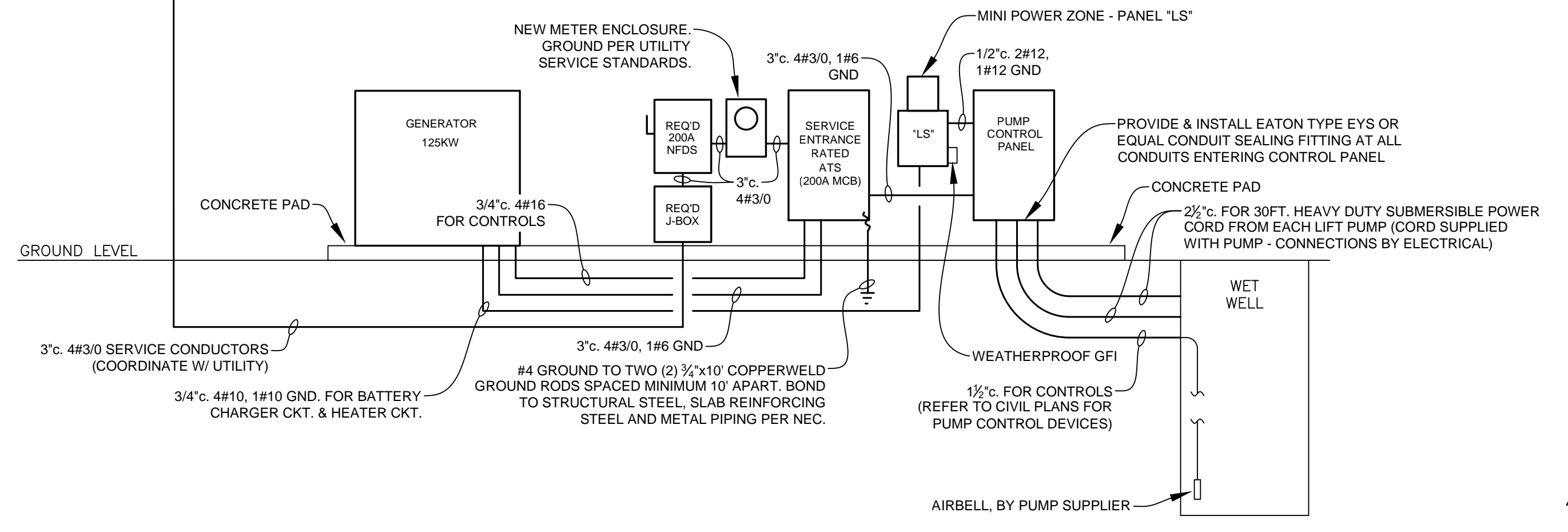
SQUARE D MPUS40F MINI POWER ZONE OR APPROVED EQUAL

### SPECIFIC NOTES:

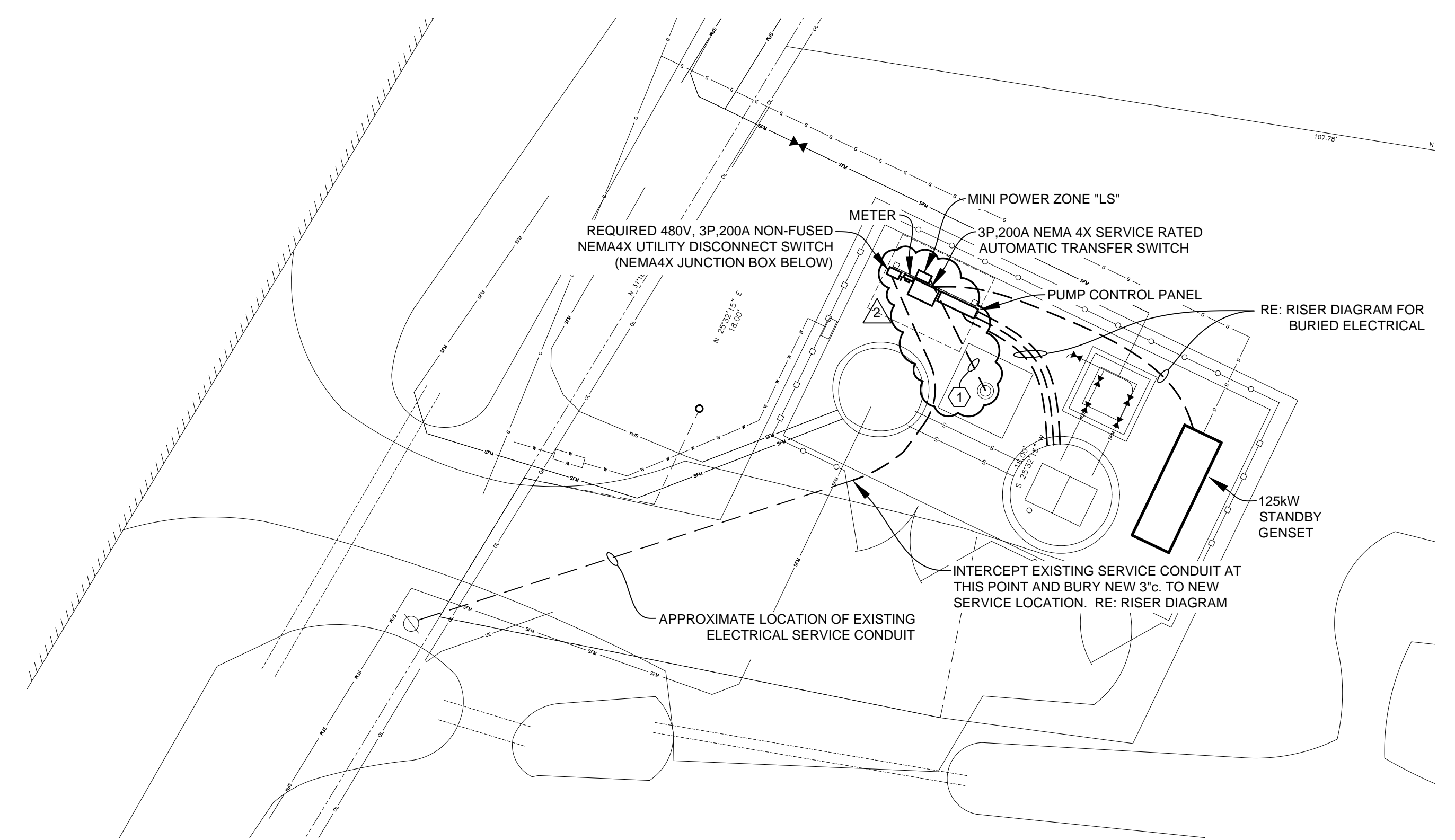
- BURY 3/4" 4#10, 1#10 GND. FOR CIRCUIT LS-6 AND ADDITIONAL CIRCUIT FOR FUTURE POWER ROTATION. RUN UP INTO BASE OF JIB CRANE AND PROVIDE WEATHERPROOF JUNCTION BOX FOR TRANSITION TO FLEXIBLE POWER CORD. PROVIDE FESTOON GLIDERS AND TRACK AS NECESSARY TO SUPPORT THE FLEXIBLE POWER CORD ALONG THE JIB BOOM AND ACCOMMODATE THE RANGE OF THE ELECTRIC HOIST.

### GENERAL NOTES:

- ANCHOR GENERATOR SECURELY TO CONCRETE PAD.
- REFER TO CONTROL DIAGRAMS ON CIVIL PLANS FOR FIELD WIRING INDICATED BY DASHED LINES & CONNECTIONS REQUIRED BY ELECTRICAL CONTRACTOR.
- ELECTRICAL EQUIPMENT SHALL BE MOUNTED TO STRUCTURE PROVIDED. REFER TO CIVIL PLANS FOR STRUCTURE DETAILS.



## RISER DIAGRAM



## LA-21 PUMP STATION ELECTRICAL PLAN

