

Date 08/9/22

Addendum # 2 to Bid 002592 Ventilated Caging Rack System

Change the above referenced Bid to agree with this addendum.
LSU Health Sciences Center will reject any proposal which does not acknowledge this addendum.
Acknowledge by including a signed copy of this addendum with your bid.

Statements:

Quantities are estimated and not guaranteed until the PO is issued.

A request for approval of PNC equipment has been granted.
PNC equipment is approved for this bid.

Bid Questions:

Q. How many AHU towers does LSUHSC need?

A. We'll consider 1 or 2 per rack

Q. What size of racks does LSUHSC need? Single-sided, double-sided, 140-cage, 160-cage capacity?

A. Double sided. We'll consider 140 cage for mice or more and 70 cage or more for rat

Q. How many total cages does LSUHSC need?

A. Total cages on the rack plus 1/3 change out-Mice, 5,413 rat, 654.

Q. What are the quantity of cage slots required on both the mouse and rat racks? What size are the racks?

A. Double sided. We'll consider 140 cage for mice or more and 70 cage or more for rats

Q. Are the number of cages listed on the bidding sheet the number of change out cages or the total # of cages required? Please provide greater detail for cage assembly quantities needed for both mouse and rat racks and cage assembly quantities needed for change out?

A. Total cages on the rack plus 1/3 change out-Mice, 5,413 rat, 654

Q. What is the required quantity of the stand - alone blowers?

A. We'll consider 1 blower per rack or 1 per two racks.

Q. Would an alternate blower style be acceptable?

A. We'll consider alternate blower styles.

Q. Are they using racks in dry heat? Why the temp rating of 450 Degrees? If not using dry heat what is the maximum temperature being used?

A. The racks need to be steam autoclavable up to 250F

Q. Do water bottles need to be quoted, if so what quantity? If the cages can be compatible with our shoulder hole bottles.

A. We won't need bottles quoted.

Q. Please confirm shoulder hole is a requirement versus a just standard sipper tube? If shoulder hole is not required what length of sipper tube is required for mice?

A. Shoulder hole is required.

Q. What type of bottle and length of sipper tube is required for rats?

A. 2 inches

Q. Would an alternate bid be acceptable with the following exceptions? This would accommodate an internal bottle with a wicking lid.

1. "Lixit internal to the cage"

A. Yes

2 "The diet delivery system and water bottle compartment must be fitted with type 304 stainless steel..."

A. We need clarification on the alternative proposed. We do not want plastic which can be chewed by the animals.

Q. Is there any connection to building exhaust required? - If so, please describe requirements

A. Yes, they will need to supply and install a 8" to 4" transition exhaust duct from existing Irish Damper from ceiling to Animal Rack. Please see attached detail for reference.

Q. Do you need to use the auto water system with the disposable cages? Or is the use of bottles satisfactory for that application?

A. Water bottles are fine

Q. In the bid does the # 1 "Mouse Cage" and # 2 "Rat Cages pg. 10 of Bid include cage bottom, cage lid, wire bar lid, bottle, sipper tube, cage card holder

A. Since there will be an auto water system, the water bottle is not required. We need the system to be compatible with a water bottle for special circumstances.

Q. Is the required Wire Bar lid a ½ pocket or a full pocket?

A. We'll consider either system.

Q. Since a lift gate is required for delivery is there any restriction to the length of the truck?

A. Yes, a standard length of 24 foot for a Box Truck is acceptable.

Q. How many cages on a mouse rack?

A. Double sided. We'll consider 140 cage for mice or more

Q. How many cages on a rat rack?

A. 70 cage or more for rats

Q. Are the Mouse and rat rack prices to include cages and automatic watering?

A. Yes

Q. Do you need exhaust connection to house exhaust?

A. Yes

Q. Does price include inside delivery and setting up units at customer facility including exhaust connection to house exhaust and remove debris?

A. Yes, but not separate line item pricing. Include as part of the cost of equipment.

Q. Are the prices for the 168 rat and 1,588 mouse cages to include the water valve, filter top, and feeder system?

A. Yes. The numbers have been revised to Total cages on the rack plus 1/3 change out-Mice, 5,413 rat, 654

Q. Does the price include freight to facility in New Orleans?

A. Yes...but not separate line item pricing. Include as part of the cost of equipment.

Q. Do you want the Avidity A-160 water valve in the cages?

A. Yes, we'll consider that option.

Q. Will HEPA supply and exhaust units mounted on the rack be acceptable if it can be demonstrated that vibration and sound from rack mounted blowers is compliant with the specification outlined in mandatory specification #9?

A. Yes



Q. What size racks do you want?

A. We don't have a hard specification on rack size, rather we need the racks to be able to fit into the rooms and doorways of the facility.

Q. What are the cage configurations -- How many cages per rack?

A. Double sided. We'll consider 140 cage for mice or more and 70 cage or more for rat

Q. How many cages for change-outs -- does the 1566 include change-outs?

A. Total cages on the rack plus 1/3 change out-Mice, 5,413 rat, 654

Q. Are there room drawings or average dimensions of rooms available?

A. See attached floor plan for reference.

Q. Please clarify how we can participate at the public opening and what information can be shared at that time.

A. The bids will be opened in the purchasing office at 433 Bolivar St. 6th Floor, New Orleans, LA 70112
The name of the bidder and the bid total will be announced.

Q. Confirming: do you want a bid bond letter submitted with the bid ?

A. No

Q. In the event that we have multiple solutions that we want to propose, would you suggest completing one pricing sheet for each quote?

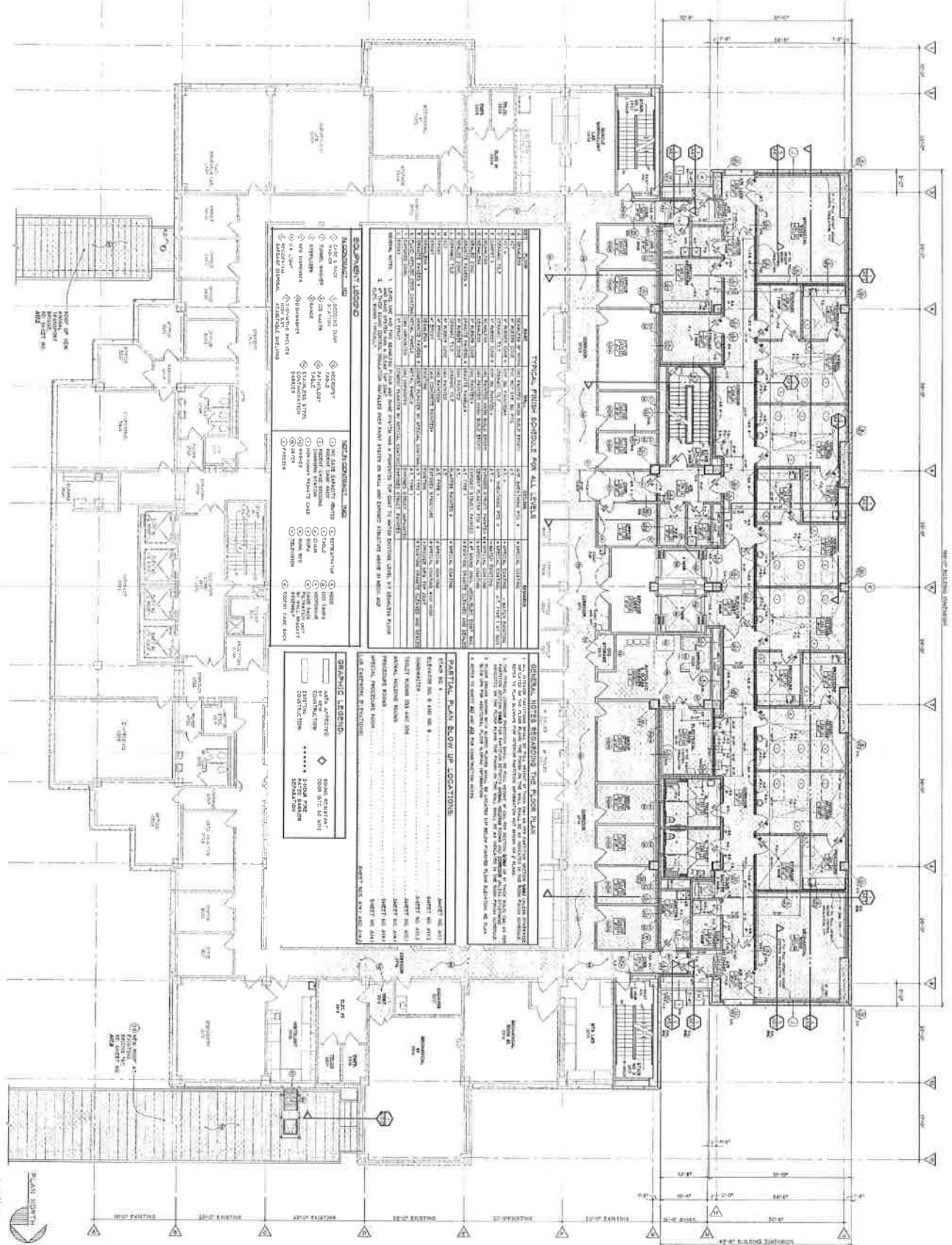
A: Yes

Michael D. Williams
Purchasing

By _____ Name/Title _____
(Signature) (Type or Print)

Firm's Name _____

LEVEL THREE FLOOR PLAN

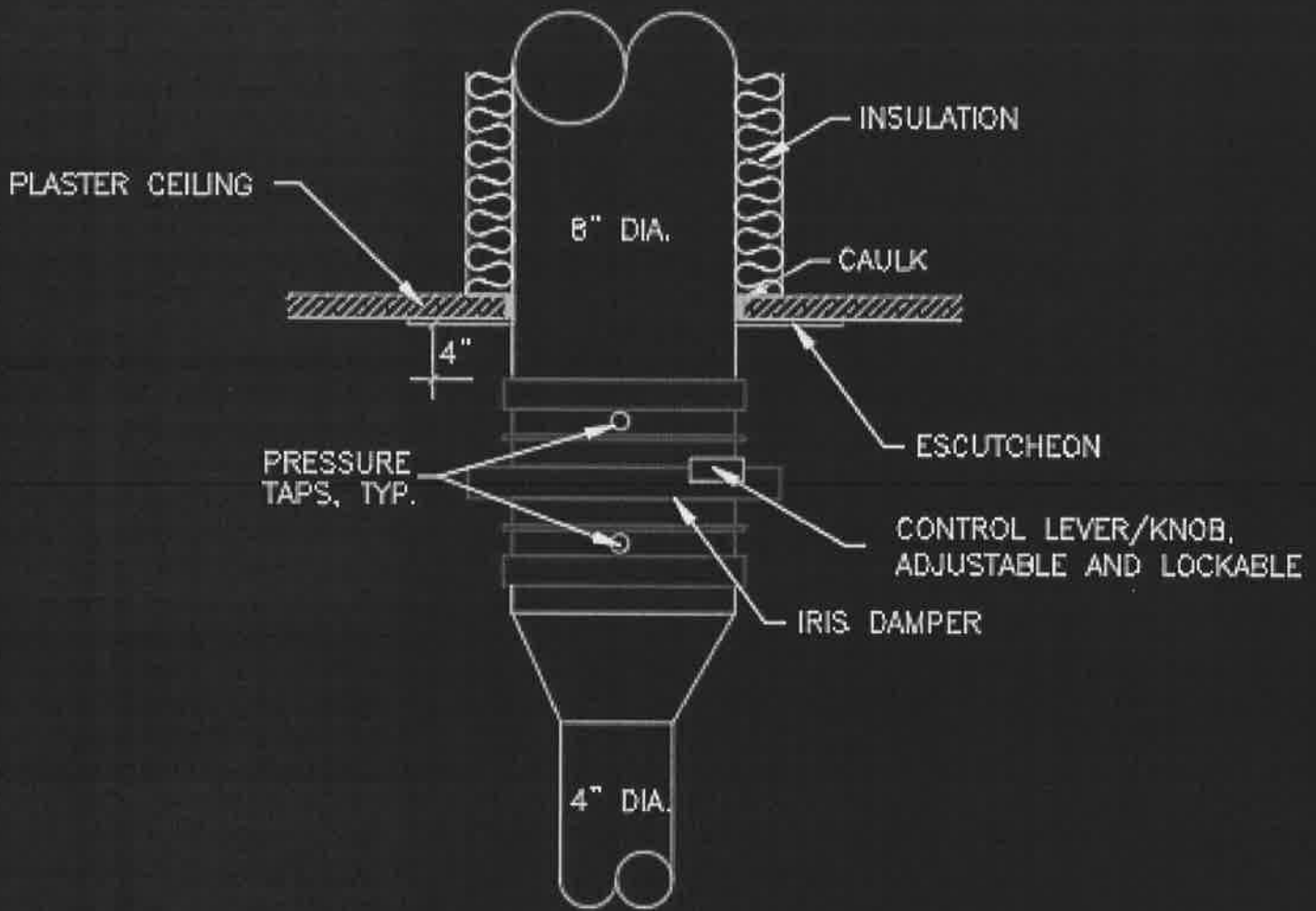


TYPICAL FLOOR SCHEDULE FOR ALL LEVELS

NO.	DESCRIPTION	UNIT	QTY	REMARKS
1	CEILING	AC	1	...
2
3
4
5
6
7
8
9
10
11
12
13
14
15
16
17
18
19
20
21
22
23
24
25
26
27
28
29
30
31
32
33
34
35
36
37
38
39
40
41
42
43
44
45
46
47
48
49
50
51
52
53
54
55
56
57
58
59
60
61
62
63
64
65
66
67
68
69
70
71
72
73
74
75
76
77
78
79
80
81
82
83
84
85
86
87
88
89
90
91
92
93
94
95
96
97
98
99
100

LEVEL 3
SCALE: 1/8"=1'-0"

SHEET NO A4.3 <small>OF 4</small>	DATE 10/16/2001	COMMISSION PACKAGE 1 CSRB 0521-A1		RESTORATION OF MAIN CAMPUS LSU HEALTH SCIENCES CENTER IN NEW ORLEANS CSRB AND MEB PERMANENT REPAIRS AND MITIGATION OF BUILDING FUNCTIONS AND CRITICAL MEP SYSTEMS AND EQUIPMENT <small>(STATE PROJECT NO. 01-107-008-15 PART B0 B03-001 F 010300)</small> SITE CODE NO. 1-N 238	DUPLANTIER & MERIC, ARCHITECTS, L.L.C. IN ASSOCIATION WITH PERKINS + WILL 4784 PARRIS AVENUE NEW ORLEANS, LA 70122 504.445.4900 FAX 504.445.4901
	DRAWN BY M.T. KOKI				



DETAIL - IRIS DAMPER, TYPICAL

N.T.S.